

PILOT

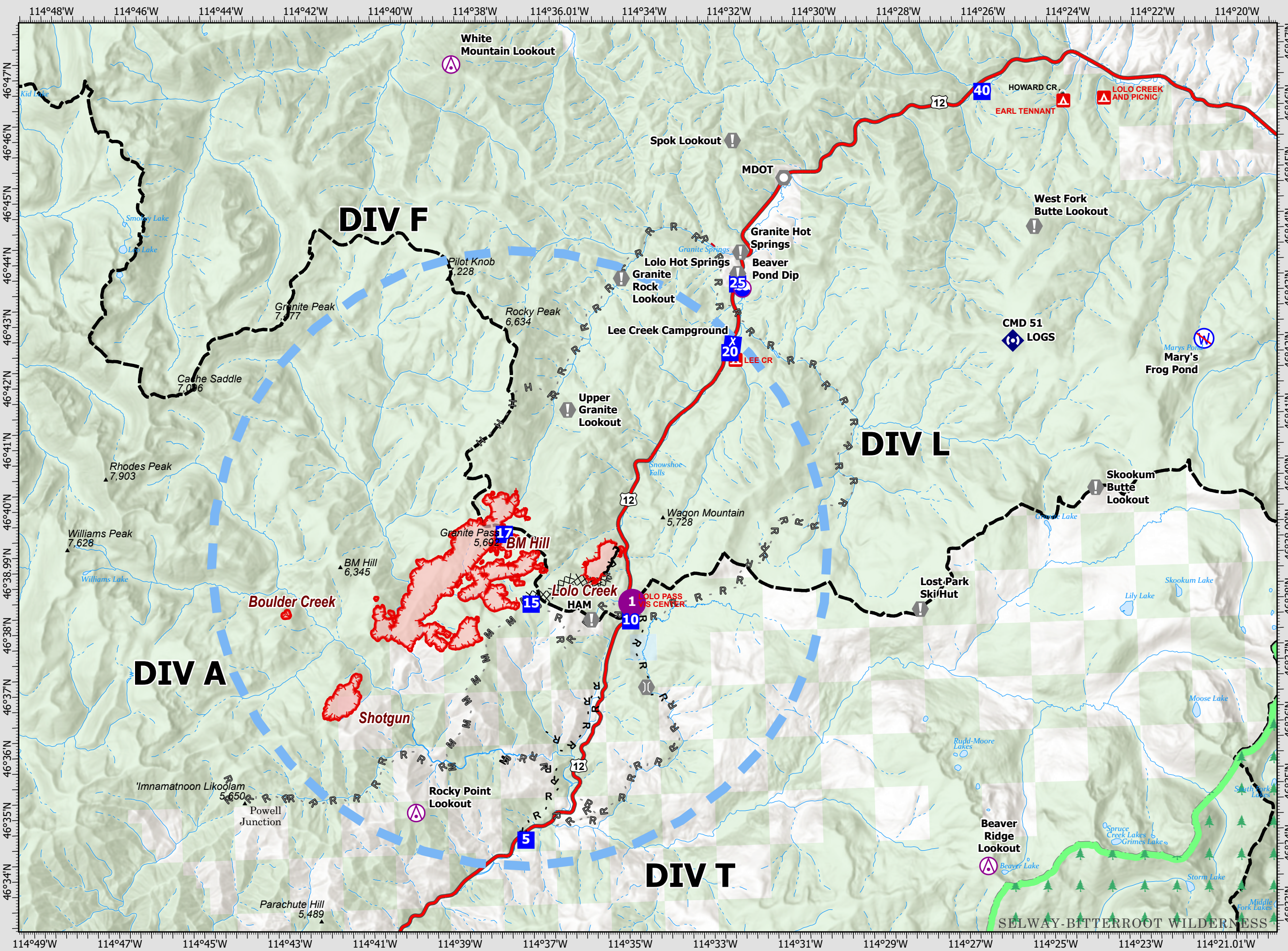
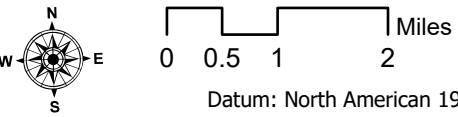
7/23/21 07:00

Granite Pass Complex

MT-LNF-000962
7/23/21 07:00

2,375 acres
IR updated 7/22/21 02:30

- Aerial Hazard
- Dip Site
- Helispot
- Drop Point
- Camp
- Value at Risk
- Landmark
- Bridge
- Repeater
- Restricted Water Source
- Completed Dozer Line
- Completed Hand Line
- Completed Mixed Construction Line
- Completed Road as Line
- Planned Hand Line
- Planned Mixed Construction Line
- Planned Road as Line
- Fence
- Temporary Flight Restriction
- Fire Edge
- Contained Line
- Wildfire Daily Fire Perimeter
- FS Wilderness Boundary



3. REMARKS (Safety Notes, Hazards, Air Operations Special Equipment, etc.): Track all dipsite locations/number of dips/gallons taken. Track all drop locations/number of drops/gallons dropped. All GPS data to be collected in DEGREES, DECIMAL MINUTES format. **AVOID** Aerial Application of Retardant/Foam/Agent within 300' of Waterways, Bodies of Water, etc. **If Retardant/Foam/Agent is dropped** within these areas immediately notify the AOB and provide the following information: Lat/Long, estimated number of gallons and a map detailing the area. Idaho water on Idaho parts of fires
MT water on MT parts of fires Clean and dry buckets to prevent cross contamination
Avoid Mary's Frog Pond Lat 46 42.232N X 114 21.039W
Fly with Transponder 1255.

8. MEDIVAC SHIP INFORMATION

Day:

Night:

2 Bear Air 24 hr hoist
Whitefish, MT 1.5hrs ETA
Life Flight 88 Air Amb 24 hr,
Missoula, MT
Alert Air Amb 24 hr,
Kalispell, MT

Short Haul On request Helena
or Salmon 45 min ETA

7. FREQUENCIES	TX	TONE	RX
AIR TO GROUND Pri Tactical	171.025 0		171.025 0
AIR TO GROUND Sec Command	171.825 0		171.825 0
A/A F/W TFR VIC	118.150 0		118.150 0
A/A ROTOR VIC	128.200 0		128.200 0
DECK			
A/G Tan Medical	155.340 0	156.7	155.340 0
AIR GUARD	168.625 0	110.9 (1)	168.625 0

Point Type	Point Name	Comments	Latitude	Longitude
Aerial Hazard	Beaver Ridge Lookout	Repeater Site	46° 33.790' N	114° 26.522' W
Aerial Hazard	Rocky Point Lookout	Repeater Site	46° 34.937' N	114° 39.944' W
Aerial Hazard	White Mountain Lookout	Repeater Site	46° 47.062' N	114° 38.597' W
Camp	Lee Creek Camp		46° 42.381' N	114° 32.159' W
Camp	Lolo Pass	Helispot Available	46° 38.108' N	114° 34.751' W
Dip Site	Beaver Pond Dip		46° 38.108' N	114° 34.751' W
Drop Point	DP-10	Lolo Pass Visitor Center	46° 38.075' N	114° 34.755' W
Drop Point	DP-15		46° 38.394' N	114° 37.086' W
Drop Point	DP-17		46° 39.540' N	114° 37.669' W
Drop Point	DP-20	Lee Creek Campground	46° 42.375' N	114° 32.220' W
Drop Point	DP-25	Lolo Hotsprings	46° 43.487' N	114° 31.988' W
Drop Point	DP-40	Earl Tenant	46° 46.481' N	114° 26.077' W
Drop Point	DP-5		46° 34.570' N	114° 37.376' W
Helispot	H-1	Lolo Visitor Center Parking Lot	46° 38.117' N	114° 34.717' W
Restricted Water Source	Mary's Frog Pond	NO DIP	46° 42.232' N	114° 21.039' W
Value at Risk	Granite Rock Lookout		46° 43.509' N	114° 34.731' W
Value at Risk	Granite Rock Lookout		46° 43.509' N	114° 34.731' W
Value at Risk	HAM Radio site	Structure Wrapped	46° 37.989' N	114° 35.682' W
Value at Risk	Lost Park Ski Hut		46° 37.995' N	114° 27.932' W
Value at Risk	Point 118 Electronic Site		46° 42.316' N	114° 25.572' W
Value at Risk	Skookum Butte Lookout		46° 39.879' N	114° 23.708' W
Value at Risk	Snotel	Structure Wrapped	46° 38.068' N	114° 34.840' W
Value at Risk	Spok Lookout		46° 45.692' N	114° 32.011' W
Value at Risk	Upper Granite Lookout		46° 41.404' N	114° 36.093' W
Value at Risk	Upper Granite Lookout		46° 41.404' N	114° 36.093' W
Value at Risk	West Fork Butte Lookout		46° 44.145' N	114° 24.952' W

