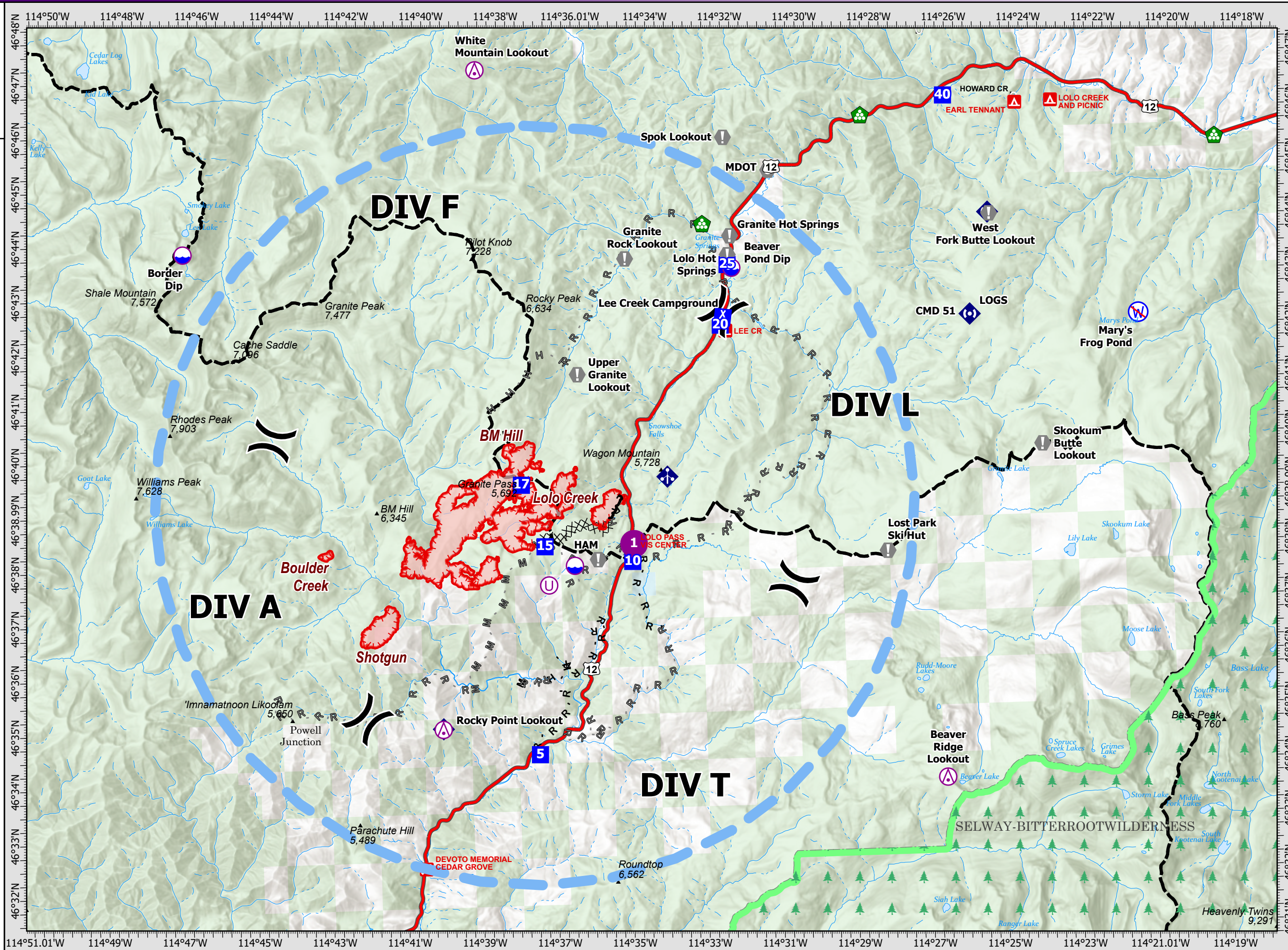
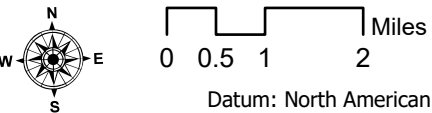


Granite Pass Complex

MT-LNF-000962
7/25/21 07:00

3,017 acres
IR updated 7/24/21 02:00

- Aerial Hazard
- Dip Site
- Helispot
- Unimproved Landing Area
- Division Break
- Drop Point
- Camp
- Value at Risk
- Landmark
- Landing or Log Deck
- Mobile Weather Unit
- Repeater
- Restricted Water Source
- Completed Dozer Line
- Completed Hand Line
- Completed Mixed Construction Line
- Completed Road as Line
- Planned Hand Line
- Planned Mixed Construction Line
- Planned Road as Line
- Fire Edge
- Contained Line
- Temporary Flight Restriction
- Wildfire Daily Fire Perimeter
- FS Wilderness Boundary



3. REMARKS (Safety Notes, Hazards, Air Operations Special Equipment, etc.): Track all dipsite locations/number of dips/gallons taken. Track all drop locations/number of drops/gallons dropped. All GPS data to be collected in DEGREES, DECIMAL MINUTES format.
AVOID Aerial Application of Retardant/Foam/Agent within 300' of Waterways, Bodies of Water, etc.
If Retardant/Foam/Agent is dropped within these areas immediately notify the AOB and provide the following information: Lat/Long, estimated number of gallons and a map detailing the area.
 Idaho water on Idaho parts of fires
 MT water on MT parts of fires Clean and dry buckets to prevent cross contamination
Avoid Mary's Frog Pond Lat 46 42.232N X 114 21.039W
Fly with Transponder 1255.

7. FREQUENCIES	TX	TONE	RX	TONE	AM/F M
AIR TO GROUND Pri Tactical	171.025		171.025		FM
AIR TO GROUND Sec Command	171.825		171.825		FM
A/A F/W TFR VIC	118.150		118.150		AM
A/A ROTOR VIC	128.200		128.200		AM
DECK					FM
A/G Tan Medical	155.340	156.7	155.340		FM
AIR GUARD	168.625	110.9 (1)	168.625	110.9 (1)	FM

8. MEDIVAC SHIP INFORMATION
Day:
Night:
 2 Bear Air 24 hr hoist
 Whitefish, MT 1.5hrs ETA
 Life Flight 88 Air Amb 24 hr,
 Missoula, MT
 Alert Air Amb 24 hr,
 Kalispell, MT

 Short Haul On request Helena
 or Salmon 45 min ETA

Point Type	Point Name	Comments	Latitude	Longitude
Aerial Hazard	Beaver Ridge Lookout	Repeater Site	46° 33.790' N	114° 26.522' W
Aerial Hazard	Rocky Point Lookout	Repeater Site	46° 34.937' N	114° 39.944' W
Aerial Hazard	White Mountain Lookout	Repeater Site	46° 47.062' N	114° 38.597' W
Camp	Lee Creek Camp		46° 42.381' N	114° 32.159' W
Camp	Lolo Pass	Helispot Available	46° 38.108' N	114° 34.751' W
Dip Site	Beaver Pond Dip		46° 38.108' N	114° 34.751' W
Dip Site	Border Dip		46° 43.807' N	114° 46.559' W
Dip Site	Pumpkin Dip (2)	6,180' elevation, 6,000 gal each, Type I Heli	46° 37.885' N	114° 36.309' W
Drop Point	DP-10	Lolo Pass Visitor Center	46° 38.075' N	114° 34.755' W
Drop Point	DP-15		46° 38.394' N	114° 37.086' W
Drop Point	DP-17		46° 39.540' N	114° 37.669' W
Drop Point	DP-20	Lee Creek Campground	46° 42.375' N	114° 32.220' W
Drop Point	DP-25	Lolo Hot Springs	46° 43.487' N	114° 31.988' W
Drop Point	DP-40	Earl Tenant	46° 46.481' N	114° 26.077' W
Drop Point	DP-5		46° 34.570' N	114° 37.376' W
Helispot	H-1	Lolo Visitor Center Parking Lot	46° 38.117' N	114° 34.717' W
Restricted Water Source	Mary's Frog Pond	NO DIP	46° 42.232' N	114° 21.039' W
Value at Risk	Granite Rock Lookout		46° 43.509' N	114° 34.731' W
Value at Risk	Granite Rock Lookout		46° 43.509' N	114° 34.731' W
Value at Risk	HAM Radio site	Structure Wrapped	46° 37.989' N	114° 35.682' W
Value at Risk	Lost Park Ski Hut		46° 37.995' N	114° 27.932' W
Value at Risk	Point 118 Electronic Site		46° 42.316' N	114° 25.572' W
Value at Risk	Skookum Butte Lookout		46° 39.879' N	114° 23.708' W
Value at Risk	Snotel	Structure Wrapped	46° 38.068' N	114° 34.840' W
Value at Risk	Spok Lookout		46° 45.692' N	114° 32.011' W
Value at Risk	Upper Granite Lookout		46° 41.404' N	114° 36.093' W
Value at Risk	Upper Granite Lookout		46° 41.404' N	114° 36.093' W
Value at Risk	West Fork Butte Lookout		46° 44.145' N	114° 24.952' W

