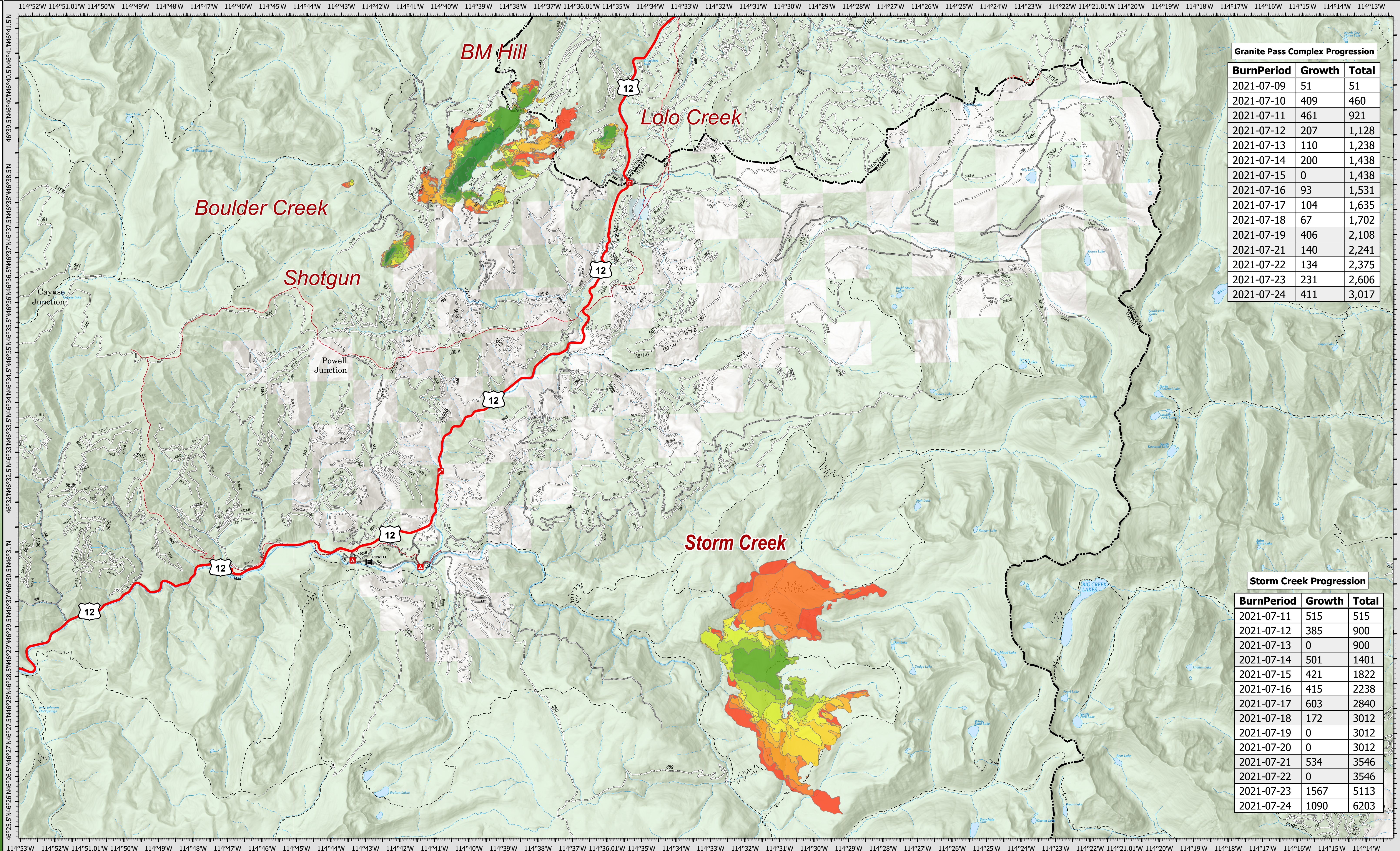


7/25/21 07:00

PROGRESSION



Granite Pass Complex Progression

BurnPeriod	Growth	Total
2021-07-09	51	51
2021-07-10	409	460
2021-07-11	461	921
2021-07-12	207	1,128
2021-07-13	110	1,238
2021-07-14	200	1,438
2021-07-15	0	1,438
2021-07-16	93	1,531
2021-07-17	104	1,635
2021-07-18	67	1,702
2021-07-19	406	2,108
2021-07-21	140	2,241
2021-07-22	134	2,375
2021-07-23	231	2,606
2021-07-24	411	3,017

Storm Creek Progression

BurnPeriod	Growth	Total
2021-07-11	515	515
2021-07-12	385	900
2021-07-13	0	900
2021-07-14	501	1401
2021-07-15	421	1822
2021-07-16	415	2238
2021-07-17	603	2840
2021-07-18	172	3012
2021-07-19	0	3012
2021-07-20	0	3012
2021-07-21	534	3546
2021-07-22	0	3546
2021-07-23	1567	5113
2021-07-24	1090	6203

Granite Pass Complex
 MT-LNF-000962
 7/25/21 07:00
 3,017 acres
 IR updated 7/24/21 02:00

Granite Pass Progression

- 2021-07-09
- 2021-07-15
- 2021-07-23
- 2021-07-10
- 2021-07-16
- 2021-07-24
- 2021-07-11
- 2021-07-17
- Storm Creek Progression**
- 2021-07-12
- 2021-07-18
- 2021-07-11
- 2021-07-13
- 2021-07-19
- 2021-07-12
- 2021-07-14
- 2021-07-21
- 2021-07-15
- 2021-07-22
- 2021-07-16
- 2021-07-21
- 2021-07-23
- 2021-07-24



North arrow and scale bar (0 to 3 miles).
 Datum: North American 1983
 CIMT15 GISS Updated: 7/24/2021 2036