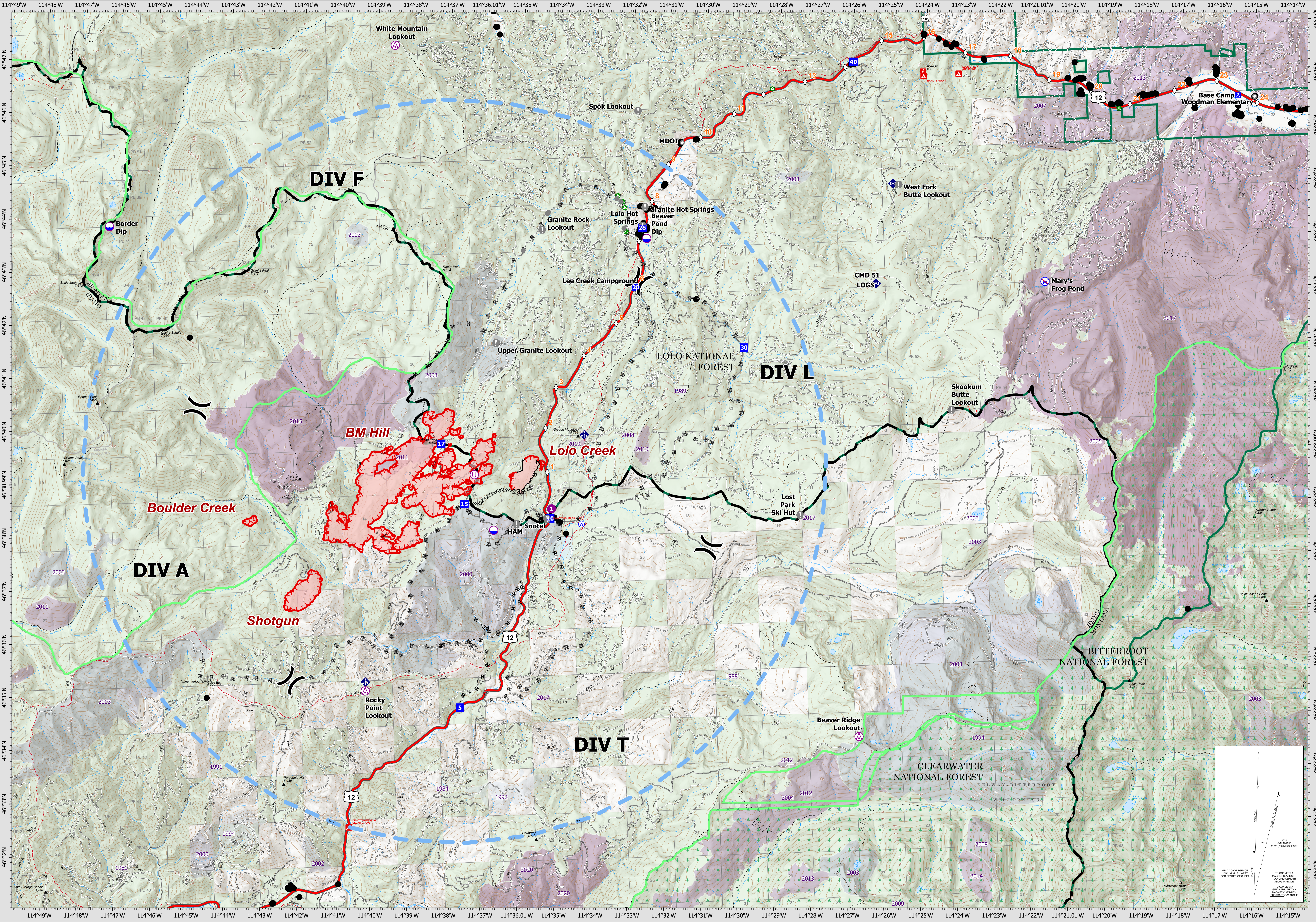


7/26/21 07:00

OPERATIONS



Granite Pass Complex

MT-LNF-000962
7/26/21 07:00

3,182 acres
IR updated 7/24/21 02:00

- ▭ Wildfire Daily Fire Perimeter
- Temporary Flight Restriction
- ▨ Completed Dozer Line
- ▨ Completed Hand Line
- ▨ Completed Mixed Construction Line
- ▨ Completed Road as Line
- ▨ Planned Fuel Break
- ▨ Planned Hand Line
- ▨ Planned Mixed Construction Line
- ▨ Contained Line
- ▨ MT/ID State Boundary
- ▨ Proposed Great Burn Wilderness Area
- ▨ FS Wilderness Boundary

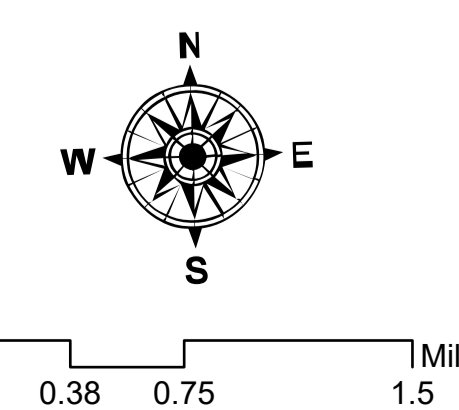
- ▨ Planned Mixed Construction Line
- ▨ Planned Road as Line
- ▨ Fire Edge
- ▨ Division Break
- ▨ Proposed Great Burn Wilderness Area
- ▨ FS Wilderness Boundary

- Fire History**
- 1980 - 1984
 - 1985 - 1989
 - 1990 - 1994
 - 2000 - 2004
 - 2005 - 2009
 - 2010 - 2014
 - 2015 - 2020

- ⊙ Aerial Hazard
- ⊙ Dip Site
- ⊙ Helispot
- ⊙ Unimproved Landing Area
- ⊙ Division Break
- ⊙ Drop Point
- ⊙ Camp
- ⊙ Value at Risk

- ⊙ Other
- ⊙ Landmark
- ⊙ Water Development or Draft Site
- ⊙ Landing or Log Deck
- ⊙ Culvert
- ⊙ Mobile Weather Unit
- ⊙ Repeater

- ⊙ Water Source
- ⊙ Restricted Water Source
- ⊙ Structures
- ⊙ Mile Marker
- ⊙ Paved FS Road
- ⊙ Gravel Road
- ⊙ Dirt Road
- ⊙ Unimproved Road



Datum: North American 1983
Scale: 1:40,000
CIMT 15 GIS Updated: 7/25/2021 23:00