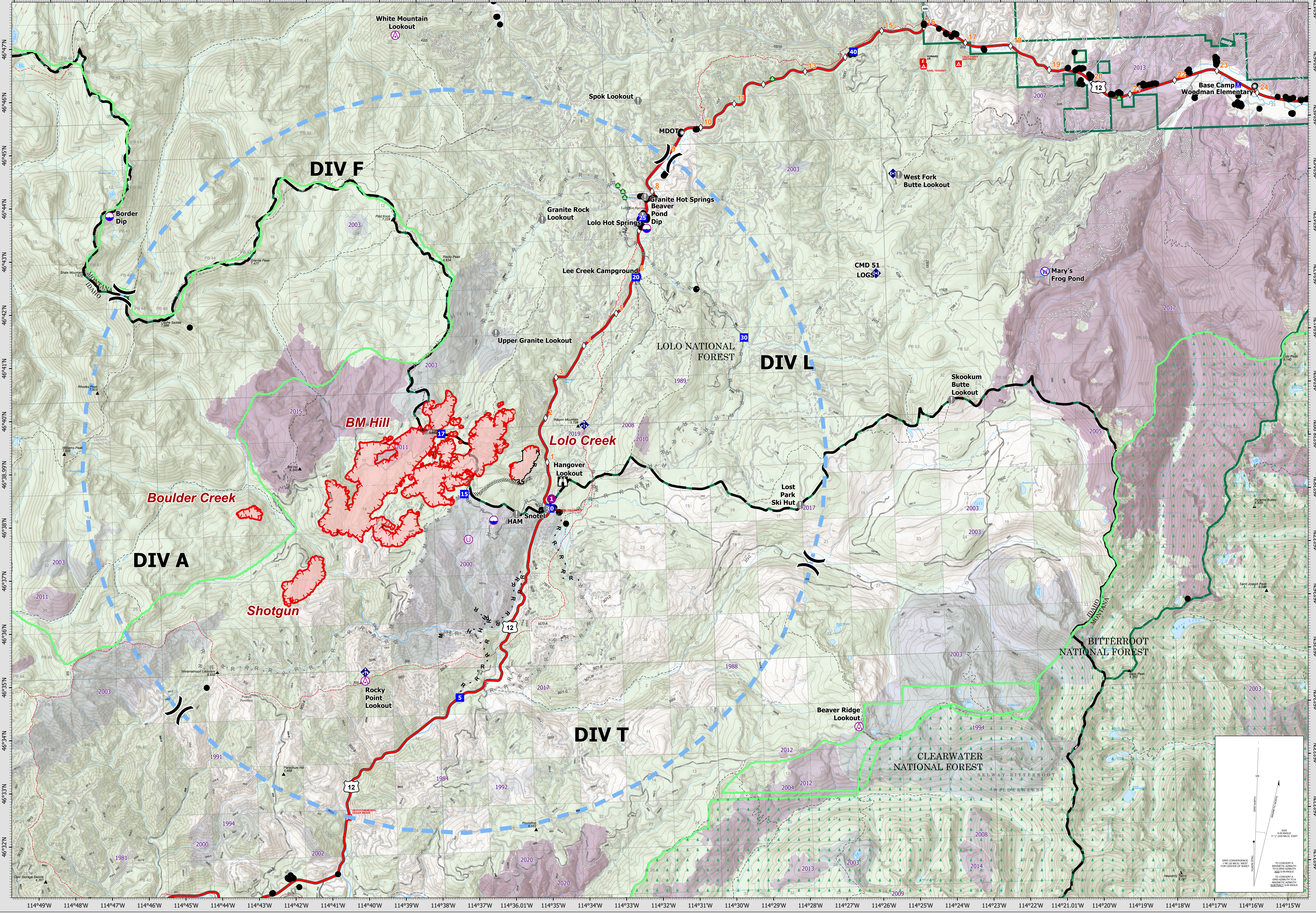


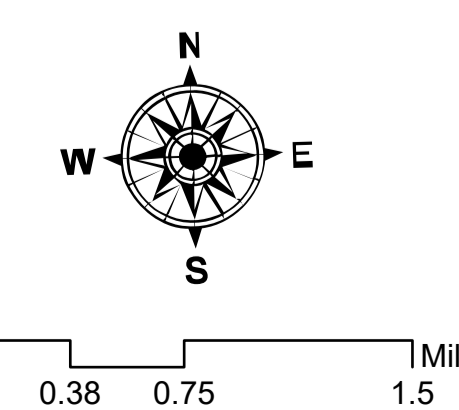
7/27/21 07:00

OPERATIONS



Granite Pass Complex
 MT-LNF-000962
 7/27/21 07:00
 3,726 acres
 IR updated 7/25/21 21:43

- ▭ Wildfire Daily Fire Perimeter
- ▭ Completed Dozer Line
- ▭ Completed Fuel Break
- ▭ Completed Hand Line
- ▭ Completed Mixed Construction Line
- ▭ Completed Road as Line
- ▭ Planned Hand Line
- ▭ Planned Mixed Construction Line
- R Planned Road as Line
- ▭ Temporary Flight Restriction
- ▭ Fire Edge
- ▭ Contained Line
- ▭ MT/ID State Boundary
- ▭ Proposed Great Burn Wilderness Area
- ▭ FS Wilderness Boundary
- ▭ Fire History
- ▭ 1980 - 1984
- ▭ 1985 - 1989
- ▭ 1990 - 1994
- ▭ 2000 - 2004
- ▭ 2005 - 2009
- ▭ 2010 - 2014
- ▭ 2015 - 2020
- ⊙ Aerial Hazard
- ⊙ Dip Site
- ⊙ Helispot
- ⊙ Unimproved Landing Area
- ⊙ Division Break
- ⊙ Drop Point
- ⊙ Camp
- ⊙ Lookout
- ⊙ Value at Risk
- ⊙ Landmark
- ⊙ Landing or Log Deck
- ⊙ Mobile Weather Unit
- ⊙ Repeater
- ⊙ Restricted Water Source
- ⊙ Structures
- ⊙ Mile Marker
- ▭ Paved FS Road
- ▭ Gravel Road
- ▭ Dirt Road
- ▭ Unimproved Road



Datum: North American 1983
 Scale: 1:40,000
 CIMT 15 GIS Updated: 7/26/2021 20:21