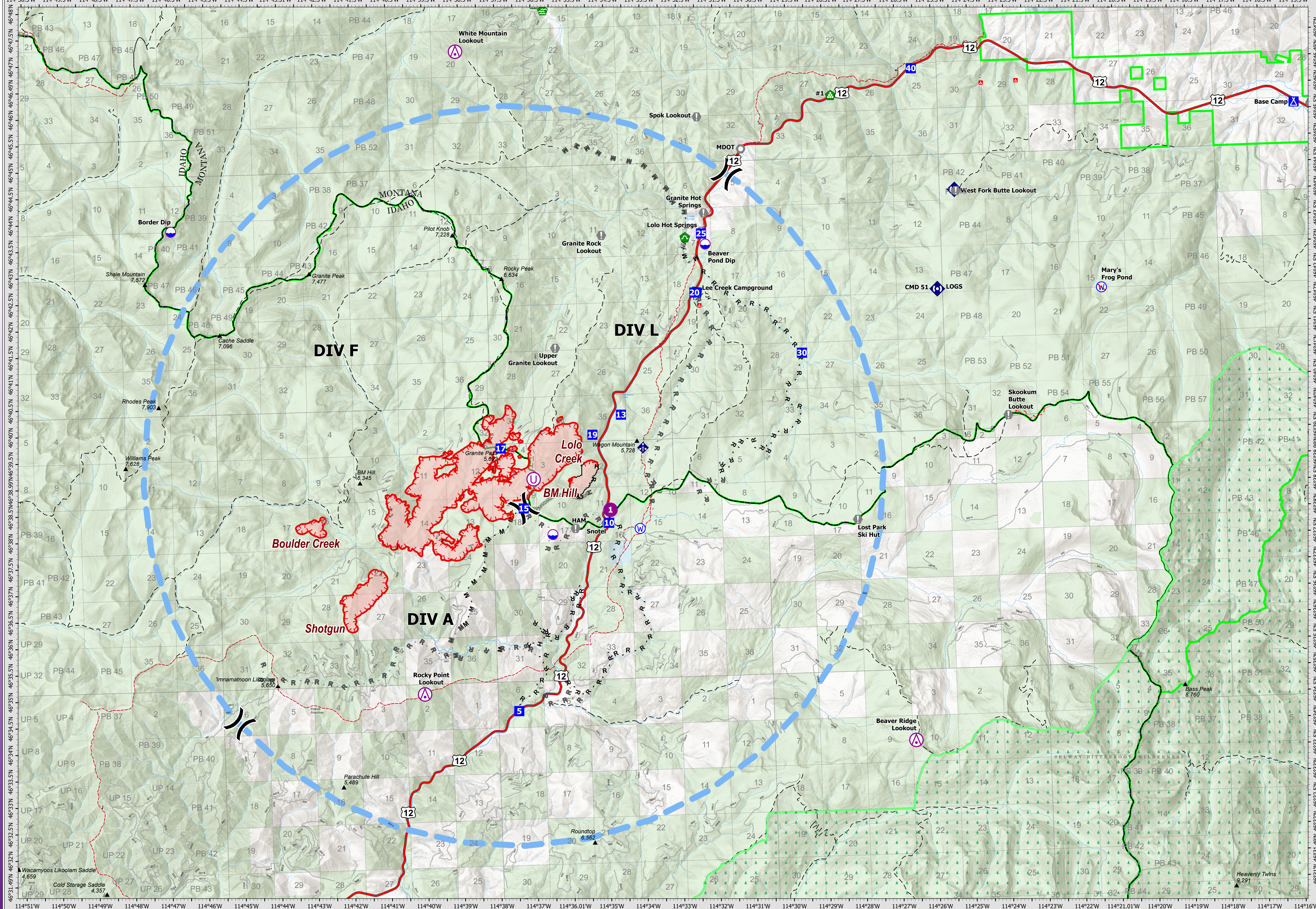


7/28/21 07:00

AIR OPERATIONS

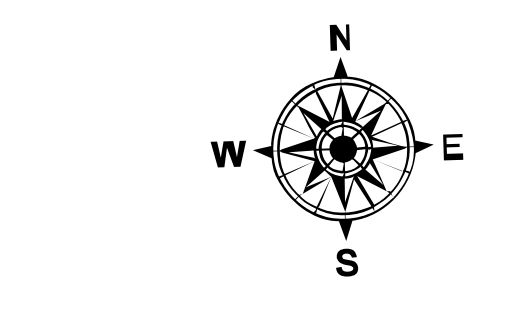


### Granite Pass Complex

MT-LNF-000962  
7/28/21 07:00

4,058 acres  
IR updated 7/27/21 17:30

- |                                   |                                 |                         |                                 |
|-----------------------------------|---------------------------------|-------------------------|---------------------------------|
| Wildfire Daily Fire Perimeter     | Planned Mixed Construction Line | Helispot                | Water Development or Draft Site |
| Completed Dozer Line              | Planned Road as Line            | Unimproved Landing Area | Landing or Log Deck             |
| Completed Fuel Break              | Fire Edge                       | Division Break          | Culvert                         |
| Completed Hand Line               | Contained Line                  | Drop Point              | Mobile Weather Unit             |
| Completed Mixed Construction Line | Temporary Flight Restriction    | Camp                    | Repeater                        |
| Completed Road as Line            | Aerial Hazard                   | Value at Risk           | Water Source                    |
| Planned Fuel Break                | Dip Site                        | Landmark                | Restricted Water Source         |
| Planned Hand Line                 |                                 |                         | FS Wilderness Boundary          |



0 0.5 1 2 Miles  
Datum: North American 1983