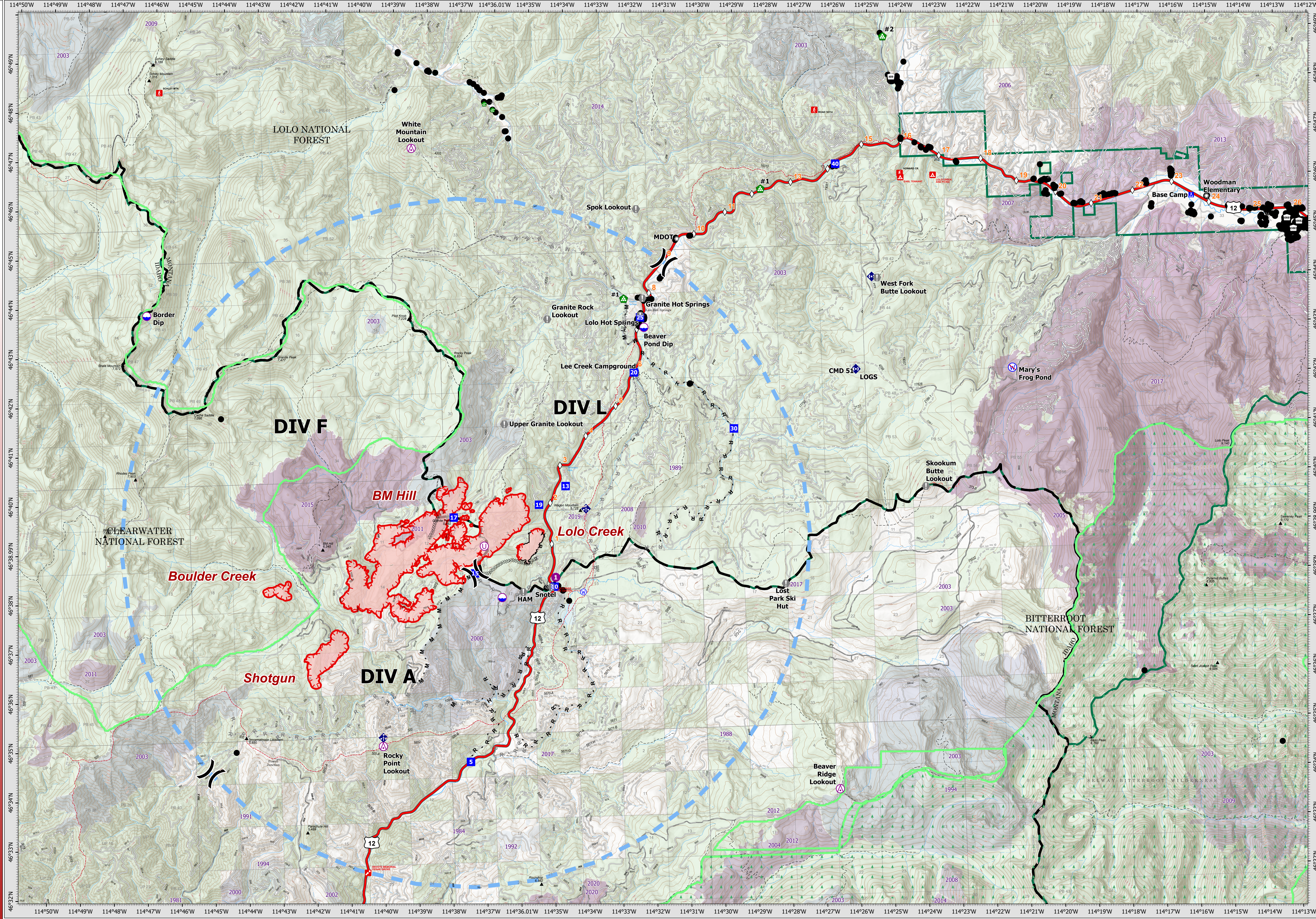


7/28/21 07:00



OPERATIONS

Granite Pass Complex

MT-LNF-000962
7/28/21 07:00

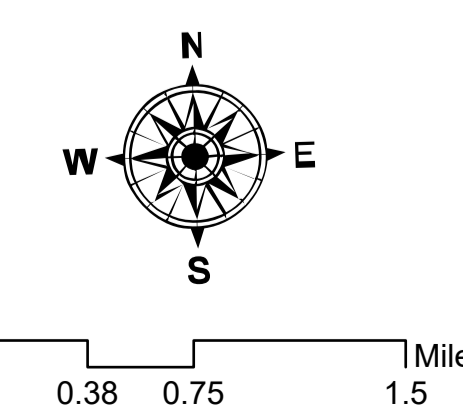
4,058 acres
IR updated 7/27/21 17:50

- ▭ Wildfire Daily Fire Perimeter
- ⊗ Completed Dozer Line
- ⊗ Completed Fuel Break
- ⊗ Completed Hand Line
- ⊗ Completed Mixed Construction Line
- ⊗ Completed Road as Line
- ⊗ Planned Fuel Break
- ⊗ Planned Hand Line
- ⊗ Planned Mixed Construction Line
- ⊗ Planned Road as Line
- ⊗ Temporary Flight Restriction
- ⊗ Fire Edge
- ⊗ Contained Line
- ⊗ MT/ID State Boundary
- ⊗ Proposed Great Burn Wilderness Area
- ⊗ FS Wilderness Boundary

- ⊗ Aerial Hazard
- ⊗ Dip Site
- ⊗ Helispot
- ⊗ Unimproved Landing Area
- ⊗ Division Break
- ⊗ Drop Point
- ⊗ Camp
- ⊗ Value at Risk
- ⊗ Planned Road as Line
- ⊗ Fire History
- ⊗ Landmark
- ⊗ Water Development or Draft Site
- ⊗ Landing or Log Deck
- ⊗ Mobile Weather Unit
- ⊗ Repeater
- ⊗ Water Source
- ⊗ Restricted Water Source

- ⊗ Fire History
- 1980 - 1984
- 1985 - 1989
- 1990 - 1994
- 2000 - 2004
- 2005 - 2009
- 2010 - 2014
- 2015 - 2020

- ⊗ Landmark
- ⊗ Water Development or Draft Site
- ⊗ Landing or Log Deck
- ⊗ Mobile Weather Unit
- ⊗ Repeater
- ⊗ Water Source
- ⊗ Restricted Water Source
- ⊗ Structures
- ⊗ Mile Marker
- ⊗ Paved FS Road
- ⊗ Gravel Road
- ⊗ Dirt Road
- ⊗ Unimproved Road



Datum: North American 1983
Scale: 1:43,000
© 2021 USFS