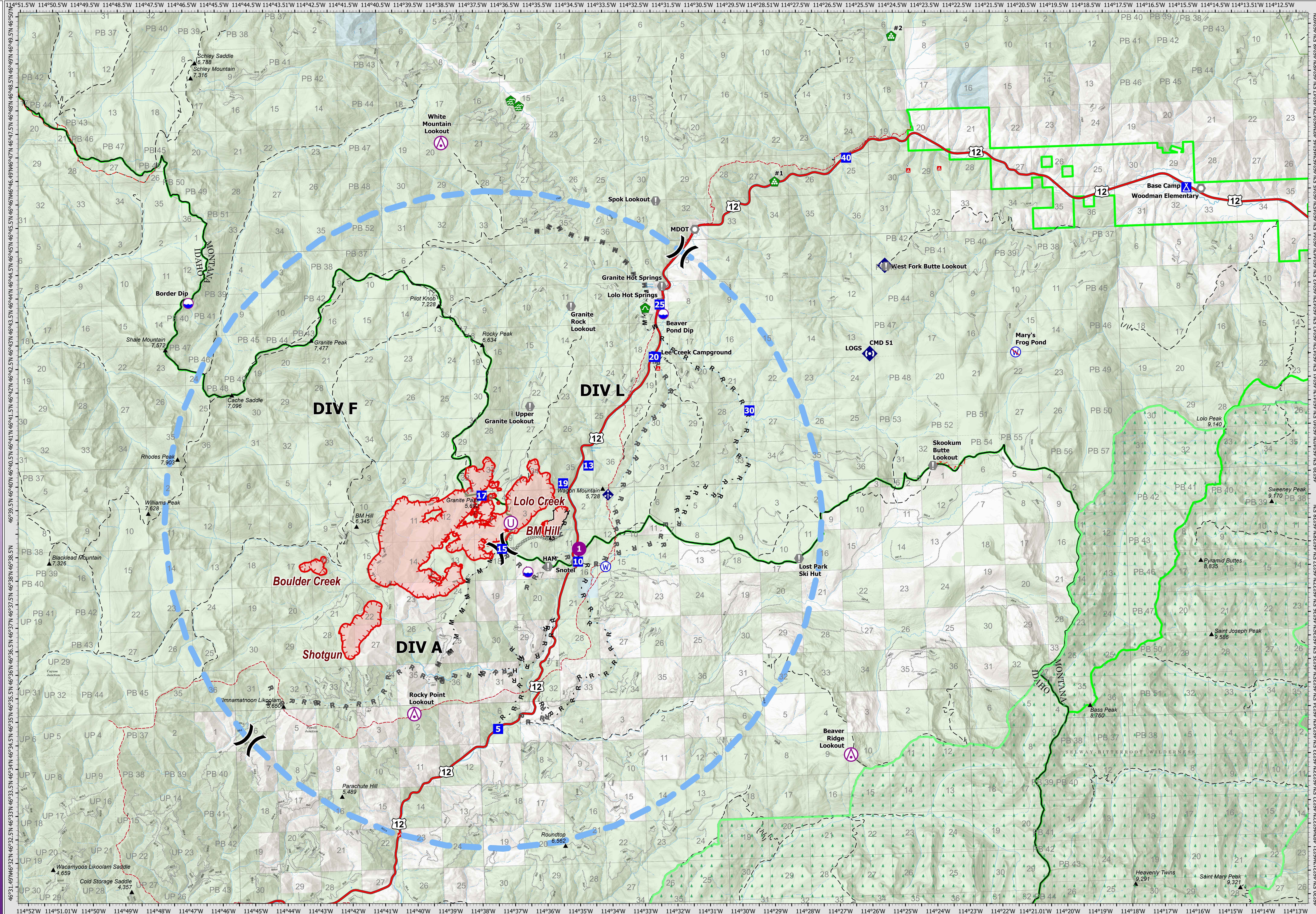


7/29/21 07:00

AIR OPERATIONS

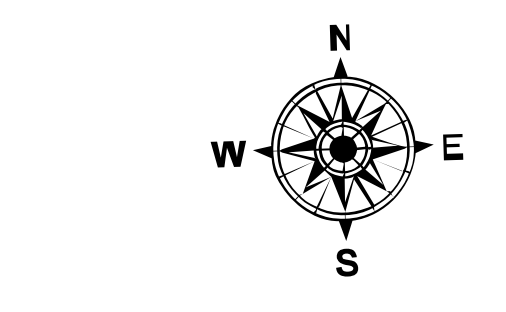


Granite Pass Complex

MT-LNF-000962
7/29/21 07:00

4,800 acres
IR updated 7/28/21 15:30

- | | | | | | |
|-------------------------------|-----------------------------------|---------------------------------|---------------------|--------------------|-------------------------|
| Wildfire Daily Fire Perimeter | Completed Dozer Line | Planned Mixed Construction Line | Fire Edge | Division Break | Culvert |
| Completed Fuel Break | Planned Road as Line | Fire Edge | Contained Line | Drop Point | Mobile Weather Unit |
| Completed Hand Line | Completed Mixed Construction Line | Temporary Flight Restriction | Aerial Hazard | Camp | Repeater |
| Planned Fuel Break | Dip Site | Helispot | Value at Risk | Water Source | Restricted Water Source |
| Planned Hand Line | Landmark | Water Development or Draft Site | Landing or Log Deck | Transmission Lines | FS Wilderness Boundary |



0 0.5 1 2 Miles
Datum: North American 1983