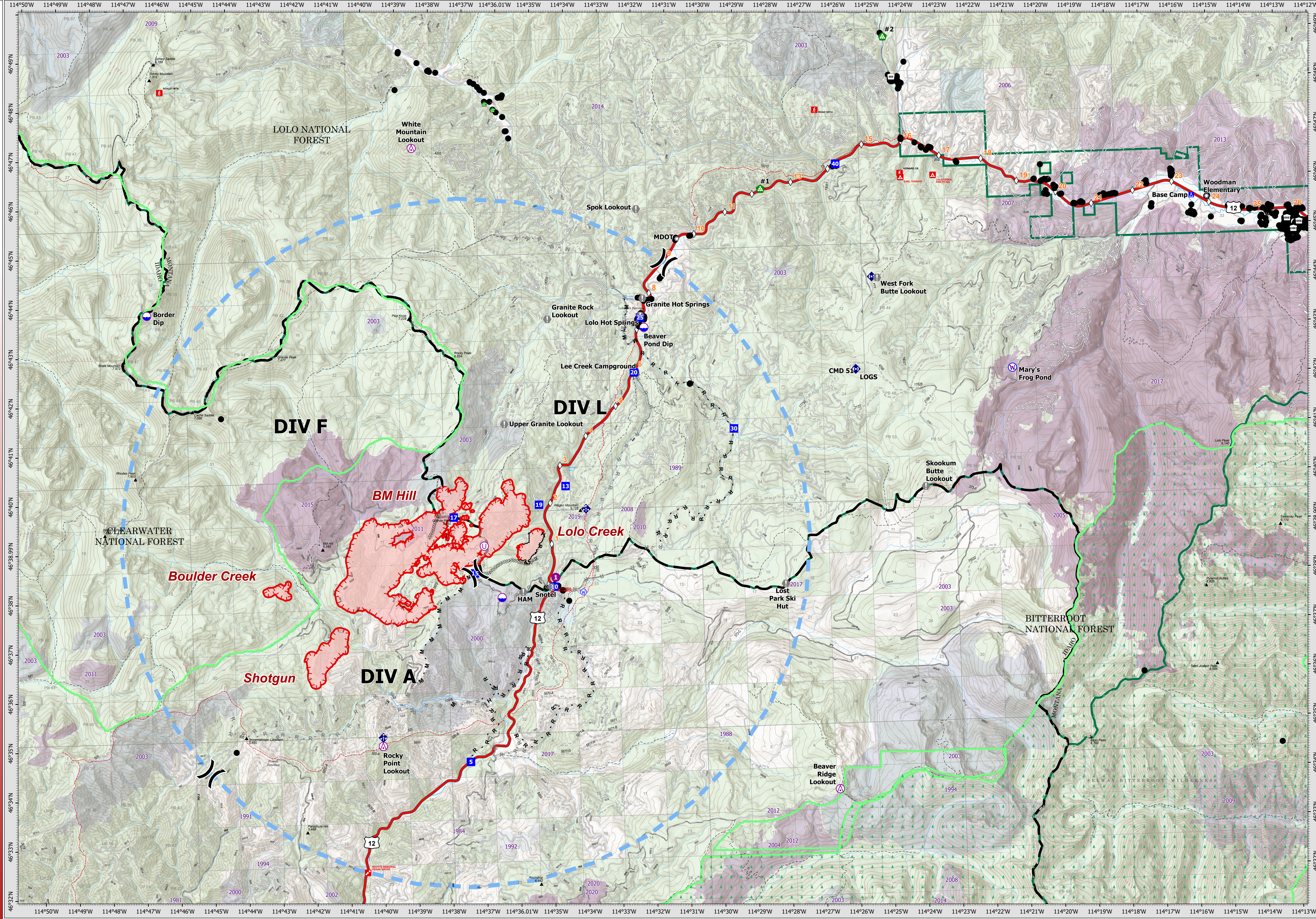


7/29/21 07:00



OPERATIONS

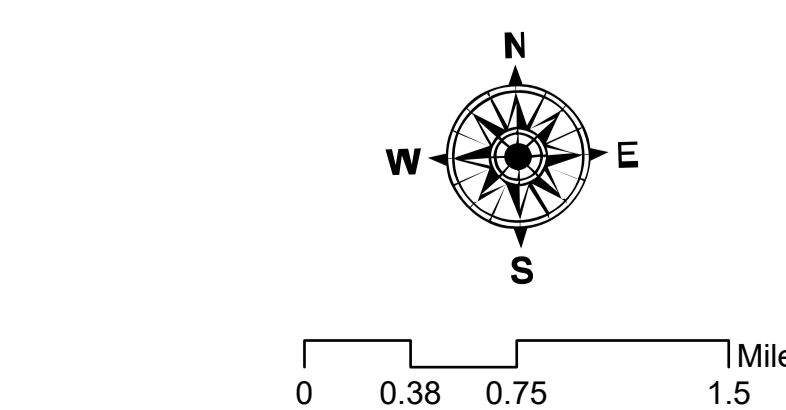
Granite Pass Complex
 MT-LNF-000962
 7/29/21 07:00
 4,800 acres
 IR updated 7/28/21 15:30

- ▭ Wildfire Daily Fire Perimeter
- ⊗ Completed Dozer Line
- ⊗ Completed Fuel Break
- ⊗ Completed Hand Line
- ⊗ Completed Mixed Construction Line
- ⊗ Completed Road as Line
- ⊗ Planned Fuel Break
- ⊗ Planned Hand Line
- ⊗ Planned Mixed Construction Line
- ⊗ Planned Road as Line
- ⊗ Temporary Flight Restriction
- ⊗ Fire Edge
- ⊗ Contained Line
- ⊗ MT/ID State Boundary
- ⊗ Proposed Great Burn Wilderness Area
- ⊗ FS Wilderness Boundary

- ⊗ Planned Mixed Construction Line
- ⊗ Planned Road as Line
- ⊗ Fire History
- ⊗ Aerial Hazard
- ⊗ Dip Site
- ⊗ Helispot
- ⊗ Unimproved Landing Area
- ⊗ Division Break
- ⊗ Drop Point
- ⊗ Camp
- ⊗ Value at Risk

- ⊗ Landmark
- ⊗ Water Development or Draft Site
- ⊗ Landing or Log Deck
- ⊗ Mobile Weather Unit
- ⊗ Repeater
- ⊗ Water Source
- ⊗ Restricted Water Source
- ⊗ Mile Marker
- ⊗ Paved FS Road
- ⊗ Gravel Road
- ⊗ Dirt Road
- ⊗ Unimproved Road

- ⊗ Structures
- ⊗ Paved FS Road
- ⊗ Gravel Road
- ⊗ Dirt Road
- ⊗ Unimproved Road



Datum: North American 1983
 Scale: 1:43,000
 CIMT15 GIS Updated: 7/28/2021 21:01