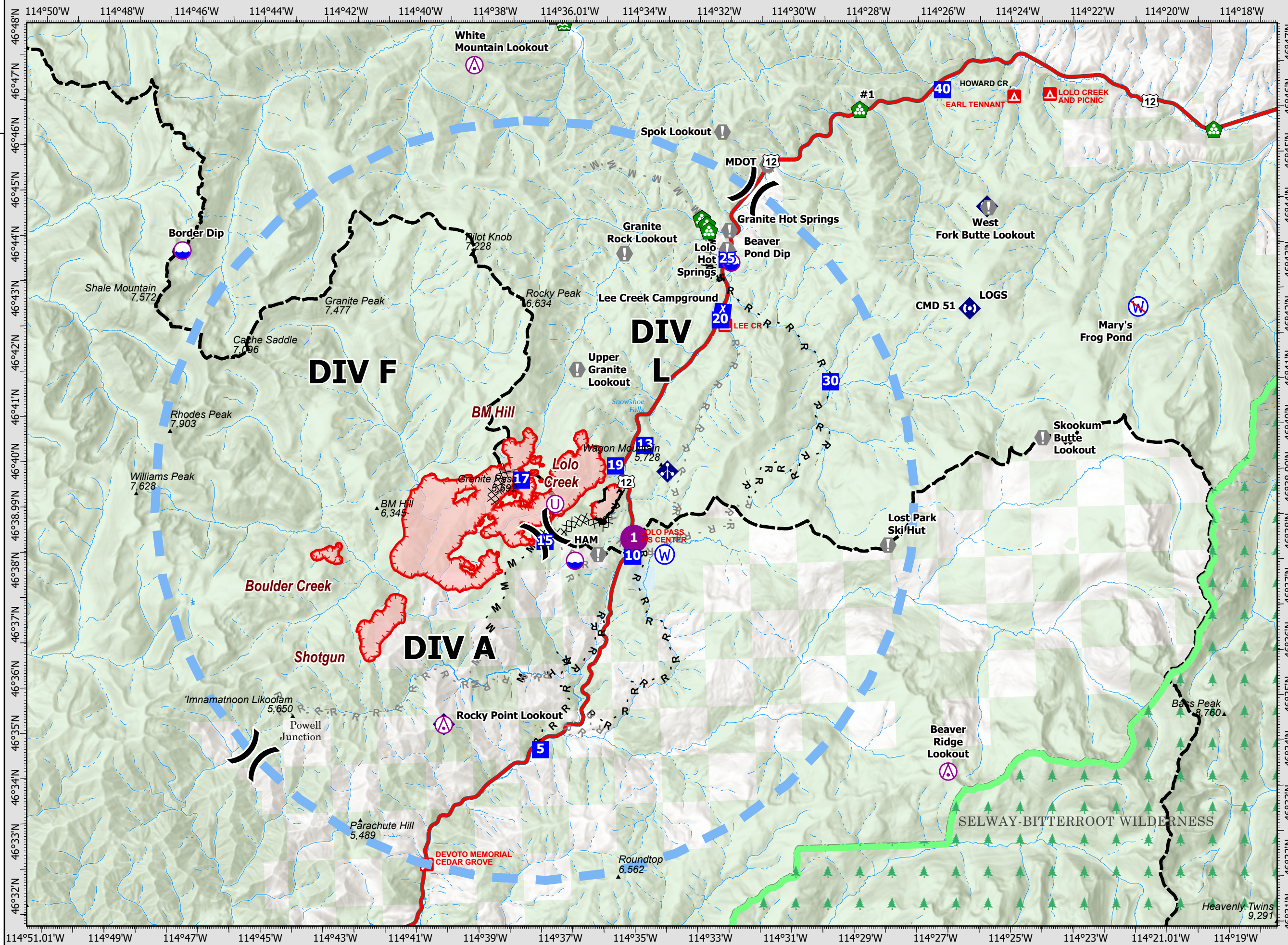
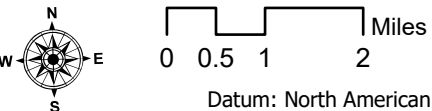


Granite Pass Complex

MT-LNF-000962
7/29/21 07:00

4,800 acres
IR updated 7/28/21 15:30

- Aerial Hazard
- Dip Site
- Helispot
- Unimproved Landing Area
- Division Break
- Drop Point
- Camp
- Value at Risk
- Landmark
- Water Development or Draft Site
- Landing or Log Deck
- Mobile Weather Unit
- Repeater
- Water Source
- Restricted Water Source
- Completed Dozer Line
- Completed Fuel Break
- Completed Hand Line
- Completed Mixed Construction Line
- Completed Road as Line
- Planned Fuel Break
- Planned Hand Line
- Planned Mixed Construction Line
- Planned Road as Line
- Temporary Flight Restriction
- Fire Edge
- Contained Line
- Wildfire Daily Fire Perimeter
- FS Wilderness Boundary



3. REMARKS (Safety Notes, Hazards, Air Operations Special Equipment, etc.): Track all dipsite locations/number of dips/gallons taken. Track all drop locations/number of drops/gallons dropped. All GPS data to be collected in **DEGREES, DECIMAL MINUTES** format.
AVOID Aerial Application of Retardant/Foam/Agent within 300' of Waterways, Bodies of Water, etc.
If Retardant/Foam/Agent is dropped within these areas immediately notify the AODB and provide the following information: Lat/Long, estimated number of gallons and a map detailing the area.
 Idaho water on Idaho parts of fires
 MT water on MT parts of fires Clean and dry buckets to prevent cross contamination
Avoid Mary's Frog Pond Lat 46 42.232N X 114 21.039W
Fly with Transponder 1255.

| 7. FREQUENCIES | TX | TX TONE | RX | RX TONE | AM/F M |
|----------------------------|---------|-----------|---------|-----------|--------|
| AIR TO GROUND Pri Tactical | 171.025 | | 171.025 | | FM |
| AIR TO GROUND Sec Command | 171.825 | | 171.825 | | FM |
| A/A FW TFR VIC | 118.150 | | 118.150 | | AM |
| A/A ROTOR VIC | 128.200 | | 128.200 | | AM |
| DECK | | | | | FM |
| A/G Tan Medical | 155.340 | 156.7 | 155.340 | | FM |
| AIR GUARD | 168.625 | 110.9 (1) | 168.625 | 110.9 (1) | FM |

8. MEDIVAC SHIP INFORMATION
Day:
Night:
 2 Bear Air 24 hr hoist FLIRS, EMT Whitefish, MT 1.5hrs ETA
 Life Flight 88 Air Amb 24 hr, Missoula, MT
 Alert Air Amb 24 hr, Kalispell, MT
 Short Haul On request Helena or Salmon 45 min ETA

| Point Type | Point Name | Comments | Latitude | Longitude |
|-------------------------|---------------------------|---|---------------|----------------|
| Aerial Hazard | Beaver Ridge Lookout | Repeater Site | 46° 33.790' N | 114° 26.522' W |
| Aerial Hazard | Rocky Point Lookout | Repeater Site | 46° 34.937' N | 114° 39.944' W |
| Aerial Hazard | White Mountain Lookout | Repeater Site | 46° 47.062' N | 114° 38.597' W |
| Camp | Lee Creek Camp | | 46° 42.381' N | 114° 32.159' W |
| Camp | Lolo Pass | Helispot Available | 46° 38.108' N | 114° 34.751' W |
| Dip Site | Beaver Pond Dip | | 46° 38.108' N | 114° 34.751' W |
| Dip Site | Border Dip | | 46° 43.807' N | 114° 46.559' W |
| Dip Site | Pumpkin Dip (2) | 6,180' elevation, 6,000 gal each, Type I Heli | 46° 37.885' N | 114° 36.309' W |
| Drop Point | DP-10 | Lolo Pass Visitor Center | 46° 38.075' N | 114° 34.755' W |
| Drop Point | DP-13 | | 46° 40.110' N | 114° 34.341' W |
| Drop Point | DP-15 | | 46° 38.394' N | 114° 37.086' W |
| Drop Point | DP-17 | | 46° 39.540' N | 114° 37.669' W |
| Drop Point | DP-19 | | 46° 39.748' N | 114° 35.141' W |
| Drop Point | DP-20 | Lee Creek Campground | 46° 42.375' N | 114° 32.220' W |
| Drop Point | DP-25 | Lolo Hotsprings | 46° 43.487' N | 114° 31.988' W |
| Drop Point | DP-30 | | 46° 41.174' N | 114° 29.319' W |
| Drop Point | DP-40 | Earl Tenant | 46° 46.481' N | 114° 26.077' W |
| Drop Point | DP-5 | | 46° 34.570' N | 114° 37.376' W |
| Helispot | H-1 | Lolo Visitor Center Parking Lot | 46° 38.117' N | 114° 34.717' W |
| Restricted Water Source | Mary's Frog Pond | NO DIP | 46° 42.232' N | 114° 21.039' W |
| Unimproved Landing Area | | Heavy Dust Abatement Needed | 46° 38.941' N | 114° 36.792' W |
| Value at Risk | Granite Rock Lookout | | 46° 43.509' N | 114° 34.731' W |
| Value at Risk | Granite Rock Lookout | | 46° 43.509' N | 114° 34.731' W |
| Value at Risk | HAM Radio site | Structure Wrapped | 46° 37.989' N | 114° 35.682' W |
| Value at Risk | Lost Park Ski Hut | | 46° 37.995' N | 114° 27.932' W |
| Value at Risk | Point 118 Electronic Site | | 46° 42.316' N | 114° 25.572' W |
| Value at Risk | Skookum Butte Lookout | | 46° 39.879' N | 114° 23.708' W |
| Value at Risk | Snotel | Structure Wrapped | 46° 38.068' N | 114° 34.840' W |
| Value at Risk | Spok Lookout | | 46° 45.692' N | 114° 32.011' W |
| Value at Risk | Upper Granite Lookout | | 46° 41.404' N | 114° 36.093' W |
| Value at Risk | Upper Granite Lookout | | 46° 41.404' N | 114° 36.093' W |
| Value at Risk | West Fork Butte Lookout | | 46° 44.145' N | 114° 24.952' W |

