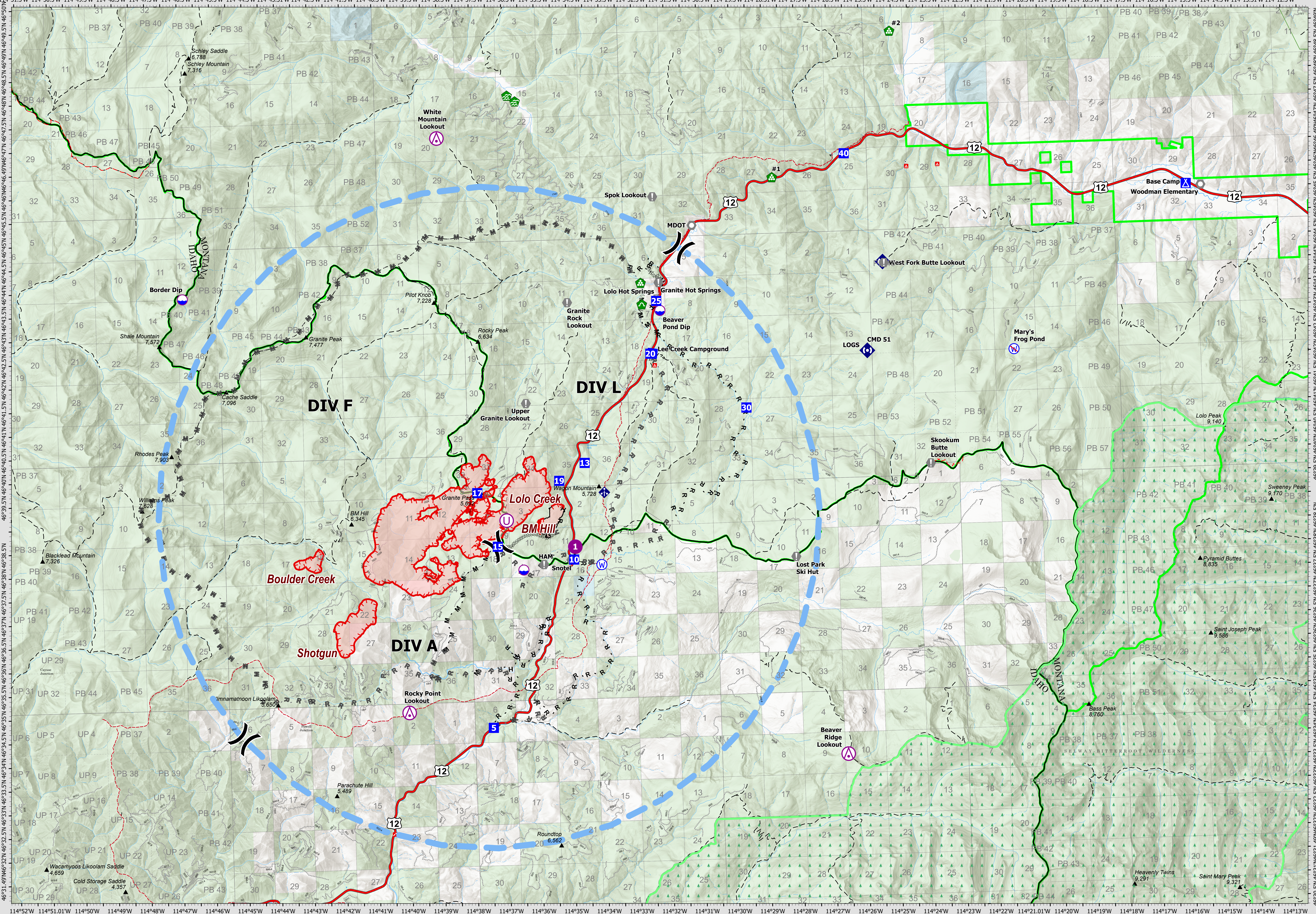


7/30/21 - 8/1/21

AIR OPERATIONS

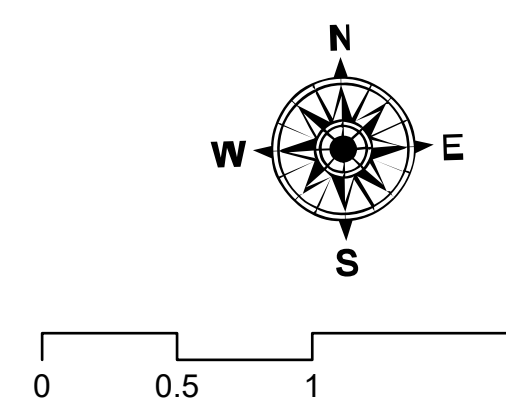


Granite Pass Complex

MT-LNF-000962
7/30/21 - 8/1/21

4,847 acres
IR updated 7/29/31 11:30

- | | | | |
|-----------------------------------|---------------------------------|---------------------------------|-------------------------|
| Wildfire Daily Fire Perimeter | Planned Mixed Construction Line | Unimproved Landing Area | Culvert |
| Completed Dozer Line | Planned Road as Line | Division Break | Mobile Weather Unit |
| Completed Fuel Break | Fire Edge | Drop Point | Repeater |
| Completed Hand Line | Contained Line | Camp | Water Source |
| Completed Mixed Construction Line | Temporary Flight Restriction | Value at Risk | Restricted Water Source |
| Completed Road as Line | Aerial Hazard | Landmark | Transmission Lines |
| Planned Fuel Break | Dip Site | Water Development or Draft Site | FS Wilderness Boundary |
| Planned Hand Line | Helispot | Landing or Log Deck | |



Date: North American 1983
CIMT15 GISB Updated: 7/29/2021 11:00