

# PILOT

7/30/21 - 8/1/21

## Granite Pass Complex

MT-LNF-000962  
7/30/21 - 8/1/21

4,847 acres  
IR updated 7/29/31 11:30

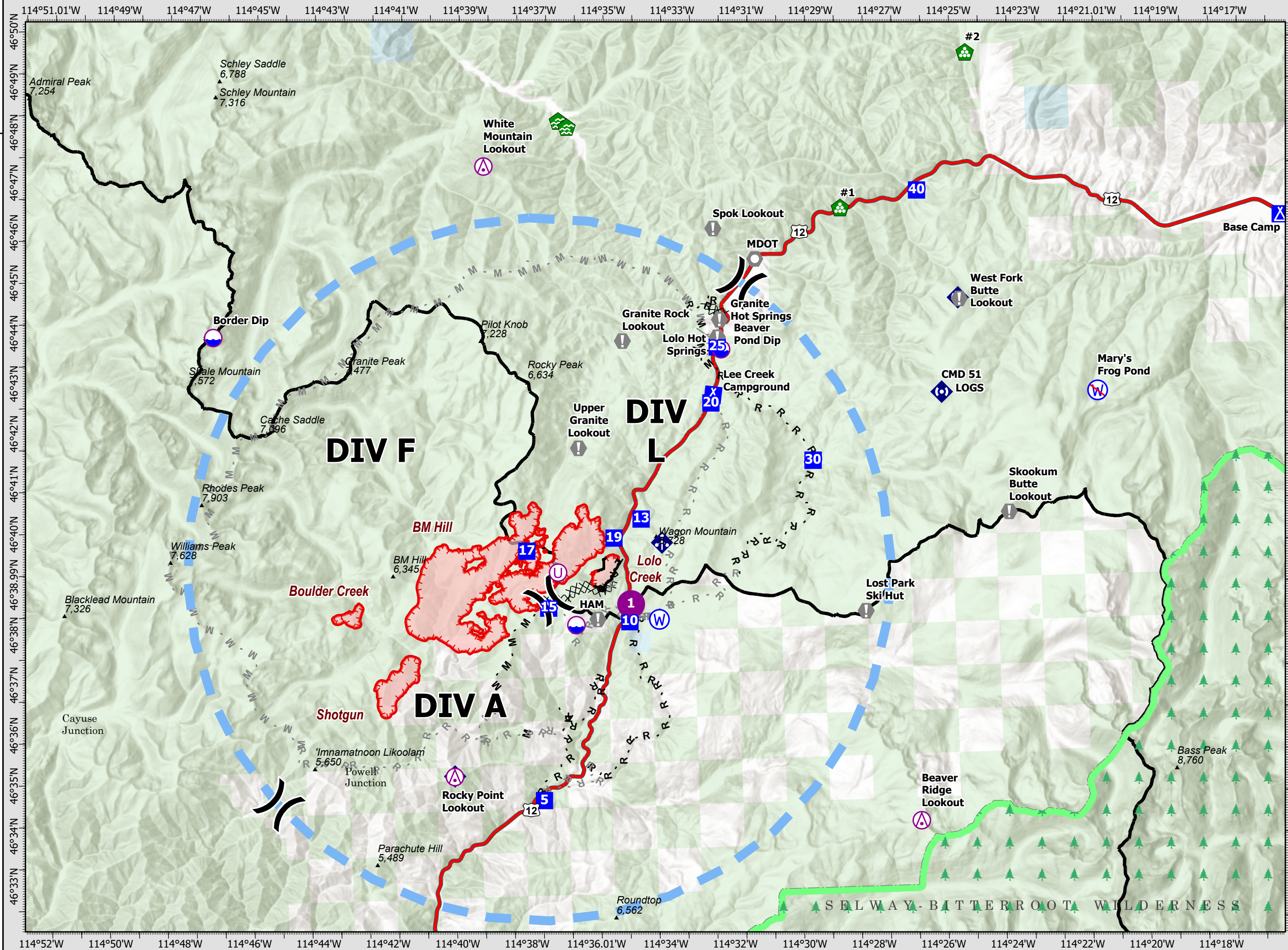
- Aerial Hazard
- Dip Site
- Helispot
- Unimproved Landing Area
- Division Break
- Drop Point
- Camp
- Value at Risk
- Landmark
- Water Development or Draft Site
- Landing or Log Deck
- Mobile Weather Unit
- Repeater
- Water Source
- Restricted Water Source
- Completed Dozer Line
- Completed Fuel Break
- Completed Hand Line
- Completed Mixed Construction Line
- Completed Road as Line
- Planned Fuel Break
- Planned Hand Line
- Planned Mixed Construction Line
- Planned Road as Line
- Temporary Flight Restriction
- Fire Edge
- Contained Line
- Wildfire Daily Fire Perimeter
- FS Wilderness Boundary



0 0.5 1 2 Miles

Datum: North American 1983

CIIMT15 GISS Updated: 7/29/2021 2020





**3. REMARKS (Safety Notes, Hazards, Air Operations Special Equipment, etc.):** Track all dipsite locations/number of dips/gallons taken. Track all drop locations/number of drops/gallons dropped. All GPS data to be collected in DEGREES, DECIMAL MINUTES format. AVOID Aerial Application of Retardant/Foam/Agent within 300' of Waterways, Bodies of Water, etc. If Retardant/Foam/Agent is dropped within these areas immediately notify the AOB and provide the following information: Lat/Long, estimated number of gallons and a map detailing the area. Idaho water on Idaho parts of fires  
 MT water on MT parts of fires Clean and dry buckets to prevent cross contamination  
 Avoid Mary's Frog Pond Lat 46.42.232N X 114.21.039W  
**Fly with Transponder 1255.**

7. FREQUENCIES	TX	TONE	RX	TONE	AM/FM
AIR TO GROUND Pri Tactical	171.0250		171.0250		FM
AIR TO GROUND Sec Command	171.8250		171.8250		FM
A/A FW TFR VIC	118.1500		118.1500		AM
A/A ROTOR VIC	128.2000		128.2000		AM
DECK					FM
A/G Tan Medical	155.3400	156.7	155.3400		FM
AIR GUARD	168.6250	110.9 (1)	168.6250		FM

**8. MEDIVAC SHIP INFORMATION**  
 Day: Night:  
**2 Bear Air 24 hr hoist FLIRS, EMT Whitefish, MT 1.5hrs ETA**  
**Life Flight 88 Air Amb 24 hr, Missoula, MT**  
**Alert Air Amb 24 hr, Kalispell, MT**  
  
**Short Haul On request Helena or Salmon 45 min ETA**

Point Type	Point Name	Comments	Latitude	Longitude
Aerial Hazard	Beaver Ridge Lookout	Repeater Site	46° 33.790' N	114° 26.522' W
Aerial Hazard	Rocky Point Lookout	Repeater Site	46° 34.937' N	114° 39.944' W
Aerial Hazard	White Mountain Lookout	Repeater Site	46° 47.062' N	114° 38.597' W
Camp	Lee Creek Camp		46° 42.381' N	114° 32.159' W
Camp	Lolo Pass	Helispot Available	46° 38.108' N	114° 34.751' W
Dip Site	Beaver Pond Dip		46° 38.108' N	114° 34.751' W
Dip Site	Border Dip		46° 43.807' N	114° 46.559' W
Dip Site	Pumpkin Dip (2)	6,180' elevation, 6,000 gal each, Type I Heli	46° 37.885' N	114° 36.309' W
Drop Point	DP-10	Lolo Pass Visitor Center	46° 38.075' N	114° 34.755' W
Drop Point	DP-13		46° 40.110' N	114° 34.341' W
Drop Point	DP-15		46° 38.394' N	114° 37.086' W
Drop Point	DP-17		46° 39.540' N	114° 37.669' W
Drop Point	DP-19		46° 39.748' N	114° 35.141' W
Drop Point	DP-20	Lee Creek Campground	46° 42.375' N	114° 32.220' W
Drop Point	DP-25	Lolo Hotsprings	46° 43.487' N	114° 31.988' W
Drop Point	DP-30		46° 41.174' N	114° 29.319' W
Drop Point	DP-40	Earl Tenant	46° 46.481' N	114° 26.077' W
Drop Point	DP-5		46° 34.570' N	114° 37.376' W
Helispot	H-1	Lolo Visitor Center Parking Lot	46° 38.117' N	114° 34.717' W
Restricted Water Source	Mary's Frog Pond	NO DIP	46° 42.232' N	114° 21.039' W
Unimproved Landing Area		Heavy Dust Abatement Needed	46° 38.941' N	114° 36.792' W
Value at Risk	Granite Rock Lookout		46° 43.509' N	114° 34.731' W
Value at Risk	Granite Rock Lookout		46° 43.509' N	114° 34.731' W
Value at Risk	HAM Radio site	Structure Wrapped	46° 37.989' N	114° 35.682' W
Value at Risk	Lost Park Ski Hut		46° 37.995' N	114° 27.932' W
Value at Risk	Point 118 Electronic Site		46° 42.316' N	114° 25.572' W
Value at Risk	Skookum Butte Lookout		46° 39.879' N	114° 23.708' W
Value at Risk	Snotel	Structure Wrapped	46° 38.068' N	114° 34.840' W
Value at Risk	Spok Lookout		46° 45.692' N	114° 32.011' W
Value at Risk	Upper Granite Lookout		46° 41.404' N	114° 36.093' W
Value at Risk	Upper Granite Lookout		46° 41.404' N	114° 36.093' W
Value at Risk	West Fork Butte Lookout		46° 44.145' N	114° 24.952' W

