

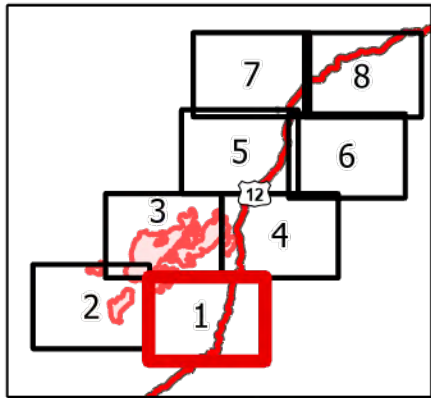
Granite Pass Complex

MT-LNF-000962
7/31/21

4,977 acres
IR updated 7/30/21 00:40

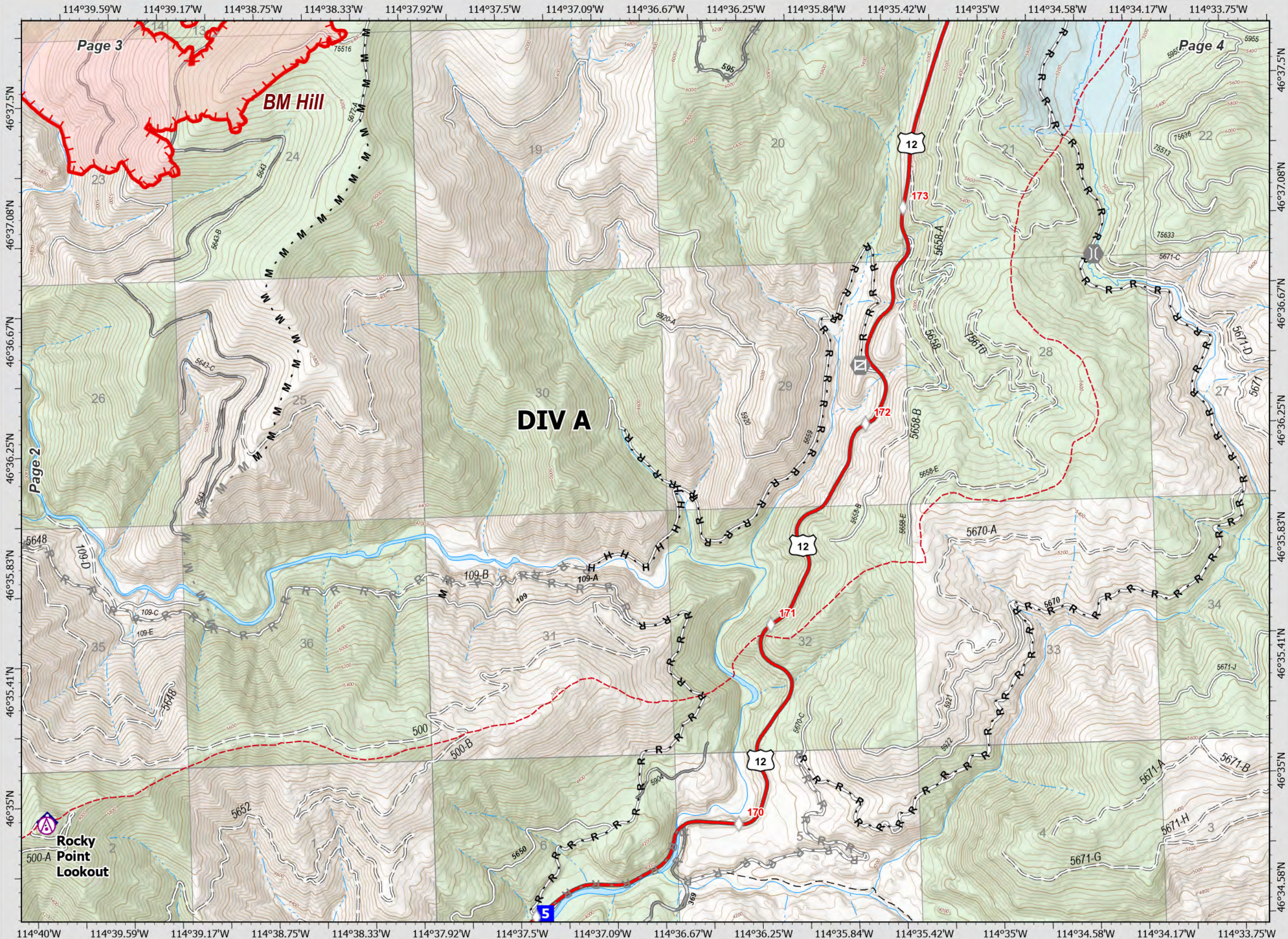
- Wildfire Daily Fire Perimeter
- Aerial Hazard
- Drop Point
- Gate
- Bridge
- Mobile Weather Unit
- MileMarkers
- Completed Hand Line
- Completed Mixed Construction Line
- Completed Road as Line
- Planned Mixed Construction Line
- Planned Road as Line
- Fire Edge
- Trail
- National Designated Trail
- Closed FS Road

Div A Page 1 of 8



0 0.13 0.25 0.5 Miles

Datum: North American 1983



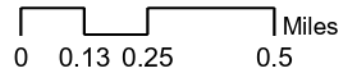
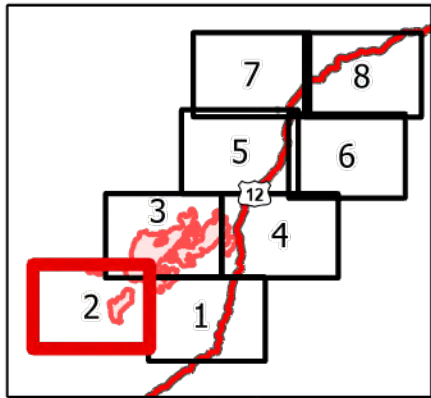
Granite Pass Complex

MT-LNF-000962
7/31/21

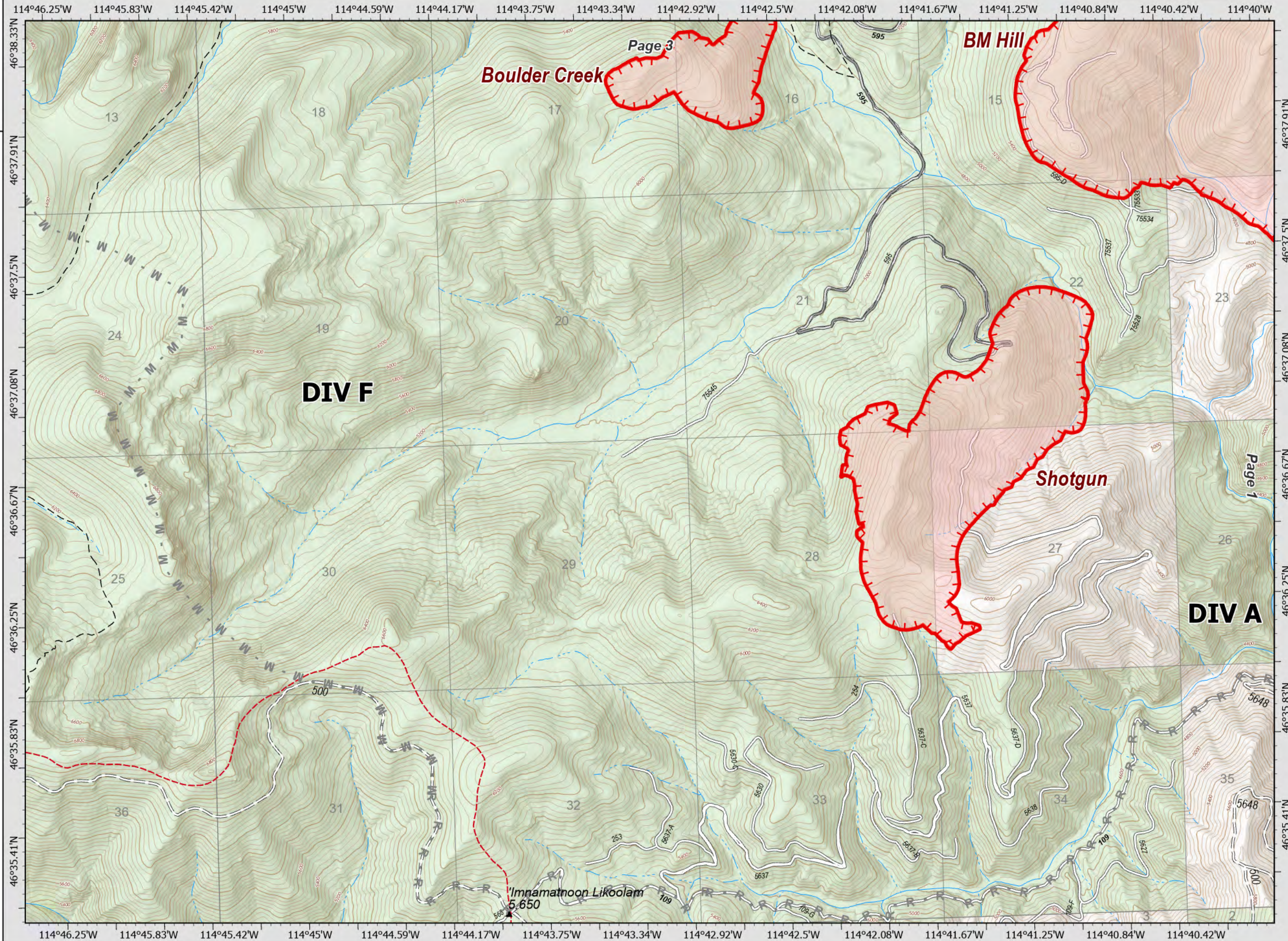
4,977 acres
IR updated 7/30/21 00:40

-  Wildfire Daily Fire Perimeter
-  Planned Mixed Construction Line
-  Planned Road as Line
-  Fire Edge
-  Trail
-  National Designated Trail
-  Closed FS Road

DIV A & F Page 2 of 8



Datum: North American 1983



Page 3

BM Hill

Boulder Creek

DIV F

Shotgun

DIV A



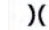







Page 1

Imnamatnoon Likoolam
5.650

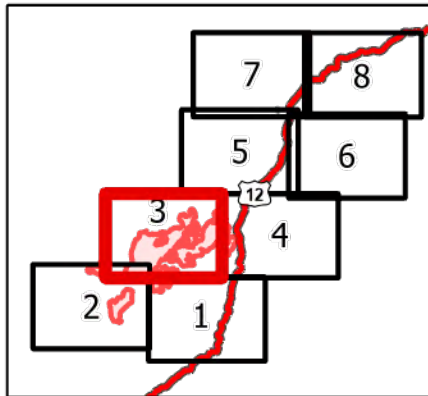
Granite Pass Complex

MT-LNF-000962
7/31/21

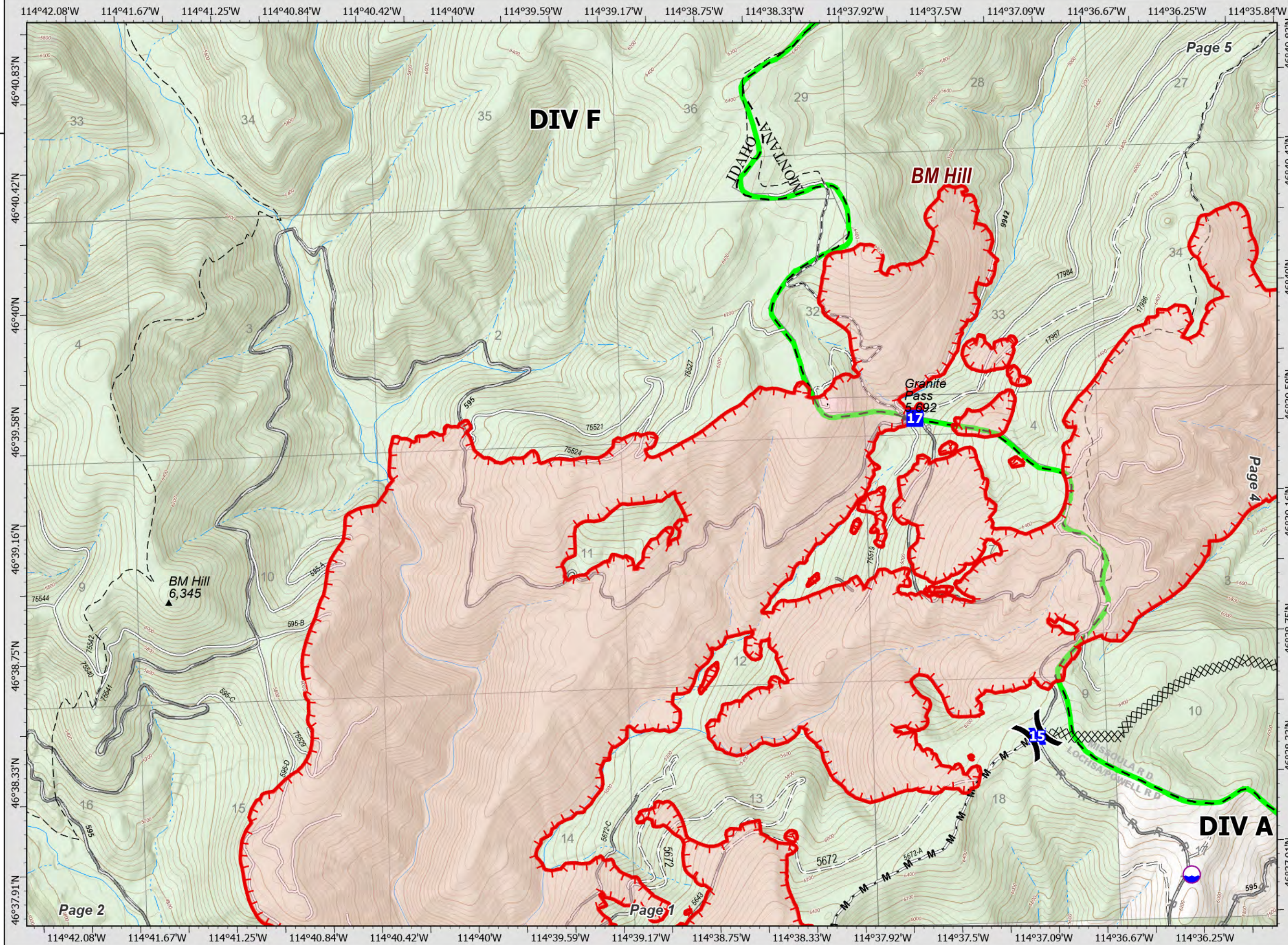
4,977 acres
IR updated 7/30/21 00:40

-  Wildfire Daily Fire Perimeter
-  Dip Site
-  Division Break
-  Drop Point
-  Completed Dozer Line
-  Completed Mixed Construction Line
-  Planned Road as Line
-  Fire Edge
-  Trail
-  Closed FS Road

DIV A & F Page 3 of 8



0 0.13 0.25 0.5 Miles
Datum: North American 1983



Granite Pass Complex

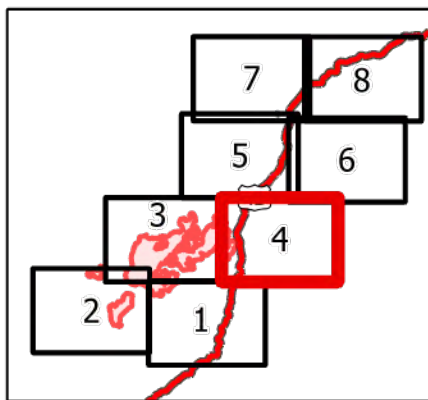
MT-LNF-000962
7/31/21

4,977 acres
IR updated 7/30/21 00:40

- | | |
|-------------------------------|---------------------------|
| Wildfire Daily Fire Perimeter | Completed Dozer Line |
| Helispot | Completed Hand Line |
| Drop Point | Completed Road as Line |
| Lookout | Planned Hand Line |
| Value at Risk | Planned Road as Line |
| Gate | Fire Edge |
| Bridge | Contained Line |
| Mobile Weather Unit | Trail |
| Internet Access | National Designated Trail |
| Water Source | Closed FS Road |
| MileMarkers | |

DIV L

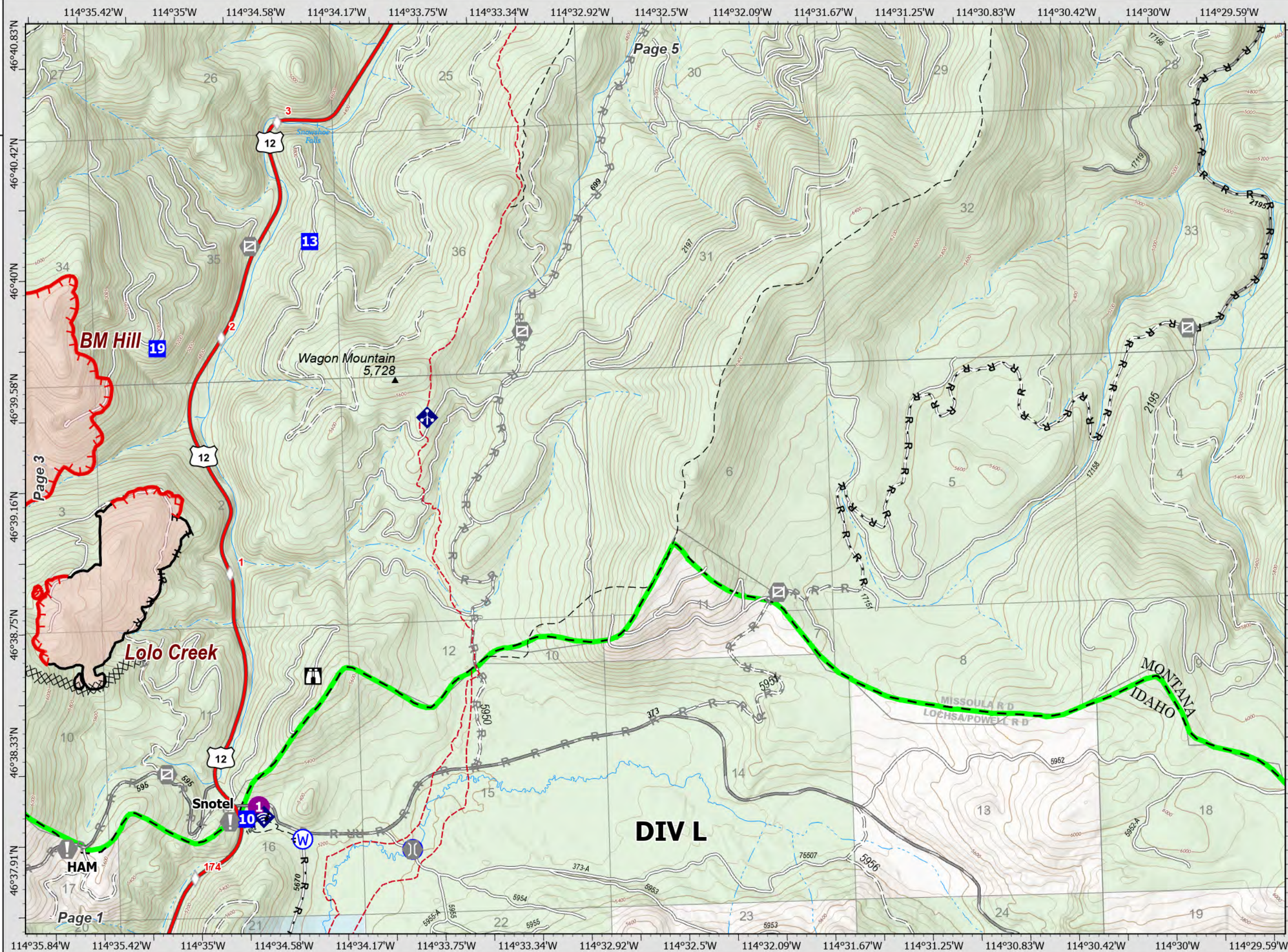
Page 4 of 8



0 0.13 0.25 0.5 Miles

Datum: North American 1983

NR IMT1 GISS Updated: 7/30/2021 2013



Granite Pass Complex

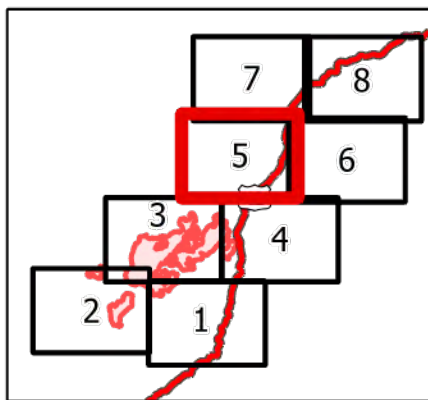
MT-LNF-000962
7/31/21

4,977 acres
IR updated 7/30/21 00:40

- Dip Site
- Drop Point
- Camp
- Value at Risk
- Gate
- Bridge
- Water Development or Draft Site
- Landing or Log Deck
- Culvert
- MileMarker
- Completed Dozer Line
- Completed Fuel Break
- Completed Hand Line
- Completed Mixed Construction Line
- Completed Road as Line
- Planned Fuel Break
- Planned Mixed Construction Line
- Planned Road as Line
- Trail
- National Designated Trail

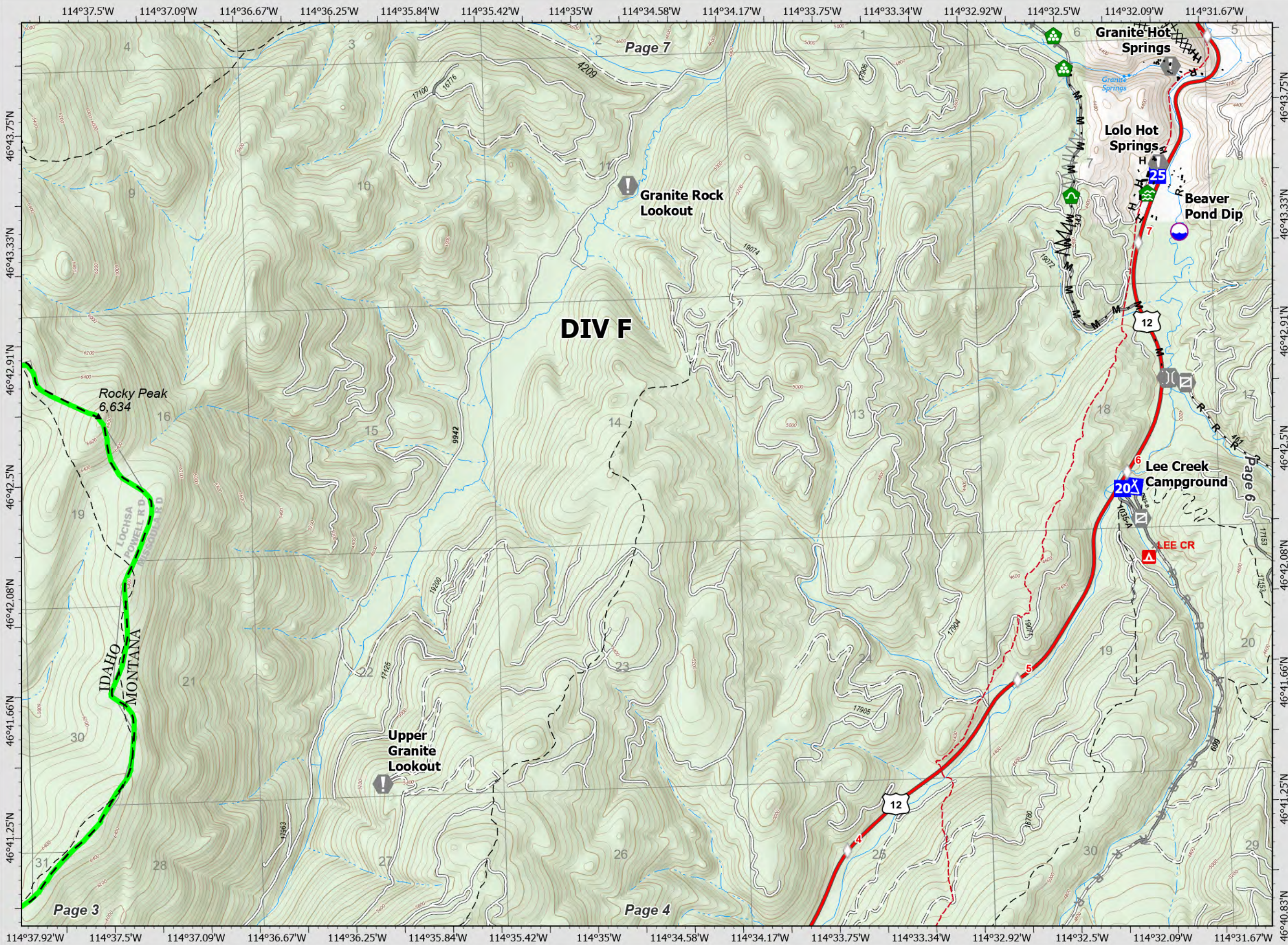
DIV F

Page 5 of 8



0 0.13 0.25 0.5 Miles

Datum: North American 1983



Granite Pass Complex

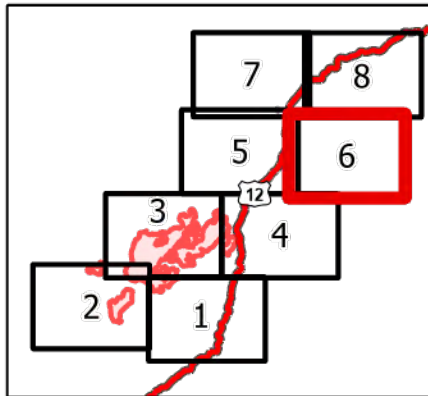
MT-LNF-000962
7/31/21

4,977 acres
IR updated 7/30/21 00:40

- Dip Site
- Drop Point
- Value at Risk
- Gate
- Bridge
- Water Development or Draft Site
- Repeater
- H** - Completed Hand Line
- M** - Completed Mixed Construction Line
- R** - Completed Road as Line
- R** - Planned Road as Line
- Trail
- National Designated Trail
- Closed FS Road

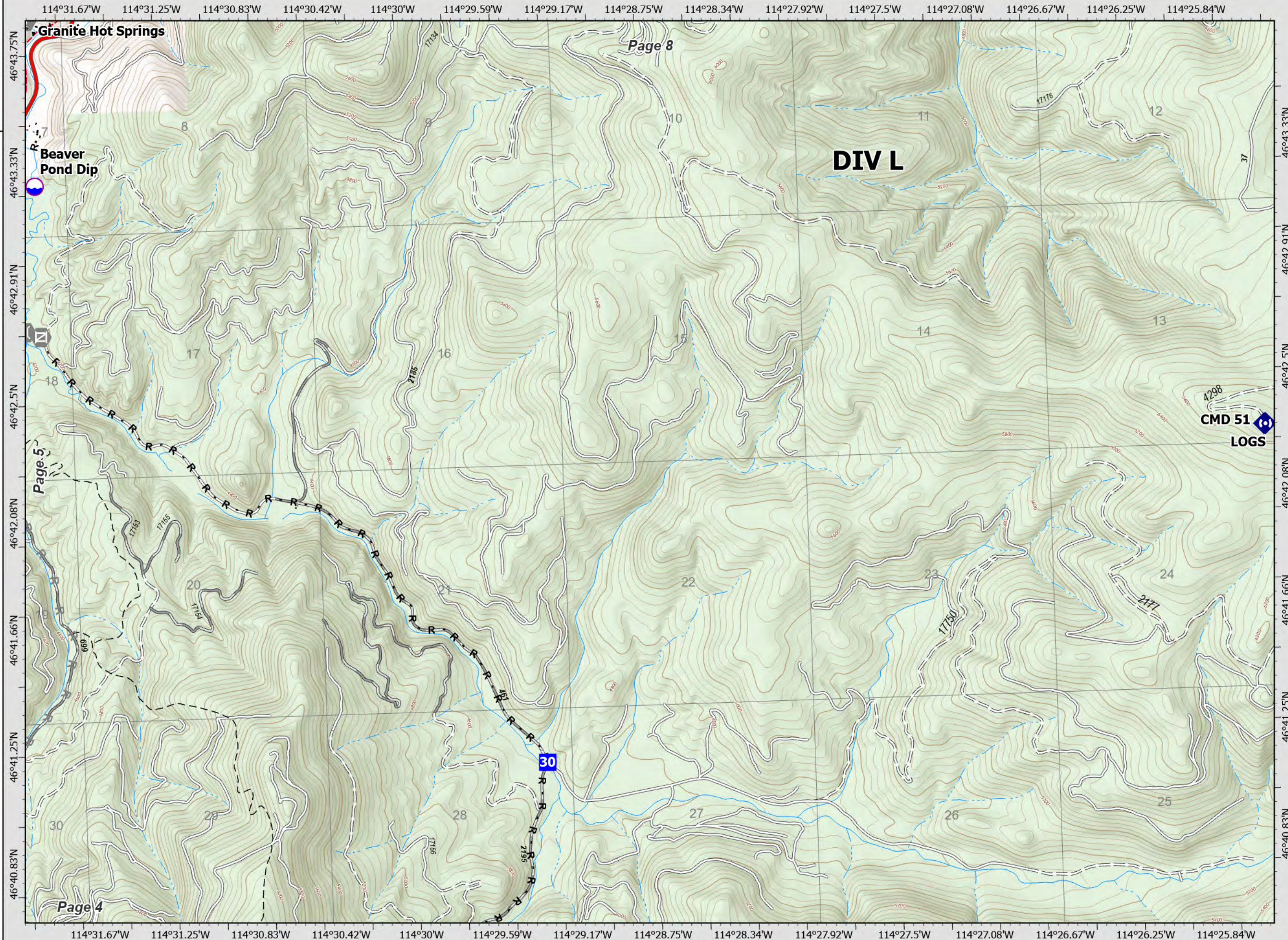
DIV L

Page 6 of 8



0 0.13 0.25 0.5 Miles

Datum: North American 1983



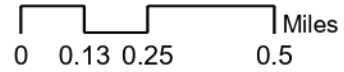
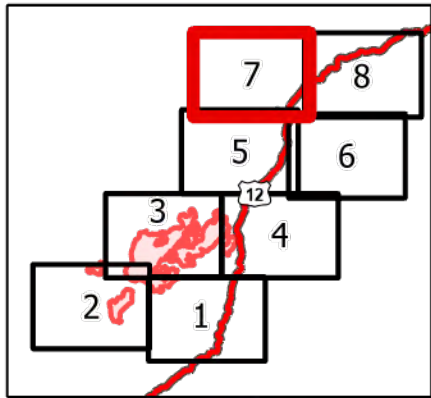
Granite Pass Complex

MT-LNF-000962
7/31/21

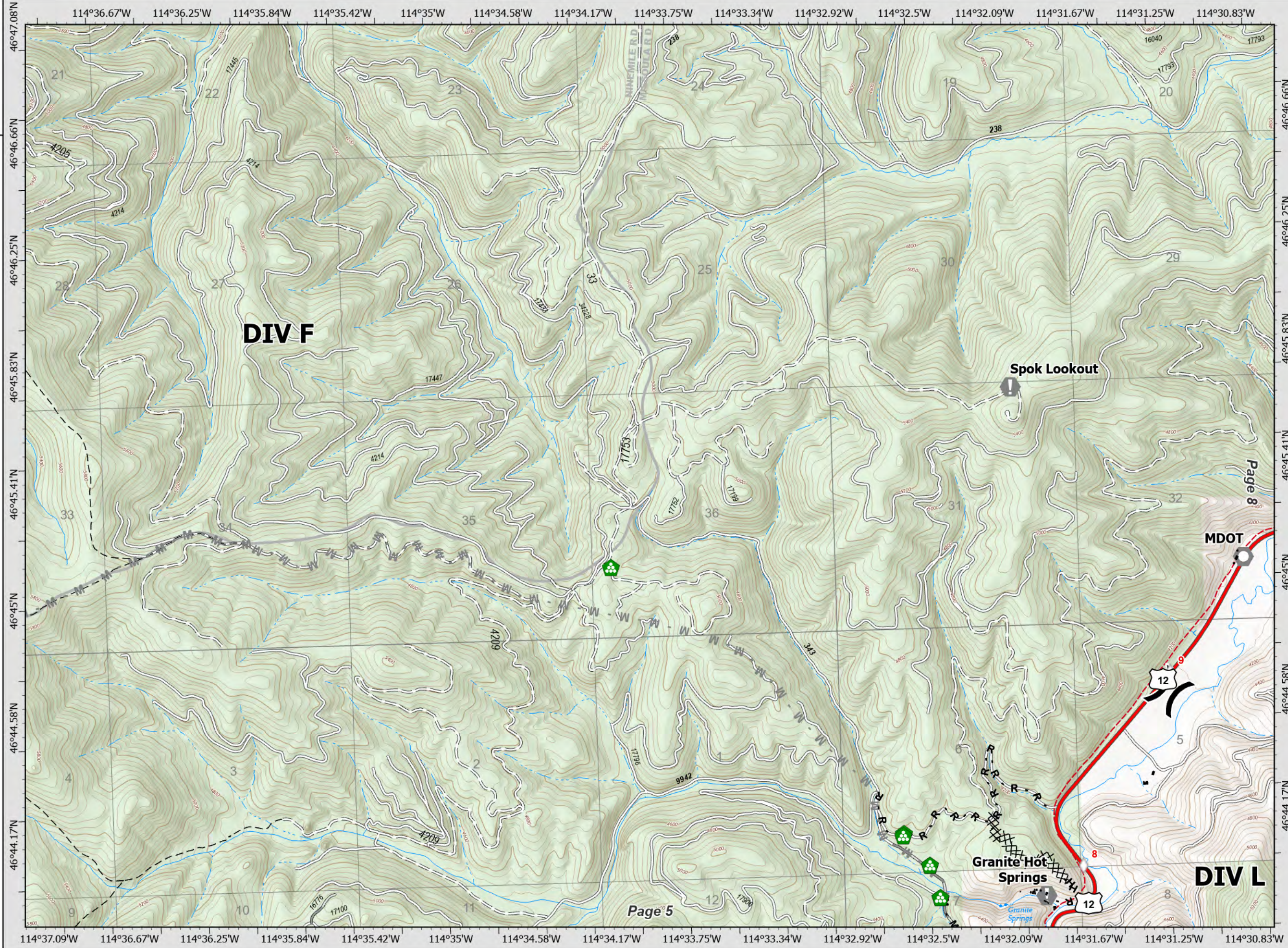
4,977 acres
IR updated 7/30/21 00:40

- (X) Division Break
- (V) Value at Risk
- (O) Landmark
- (L) Landing or Log Deck
- (◇) MileMarkers
- (X) Completed Dozer Line
- (H) Completed Hand Line
- (M) Completed Mixed Construction Line
- (R) Completed Road as Line
- (M) Planned Mixed Construction Line
- (- - -) Trail
- (- - -) National Designated Trail
- (.....) Closed FS Road

DIV L Page 7 of 8



Datum: North American 1983



Granite Pass Complex

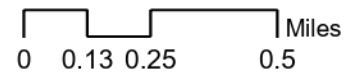
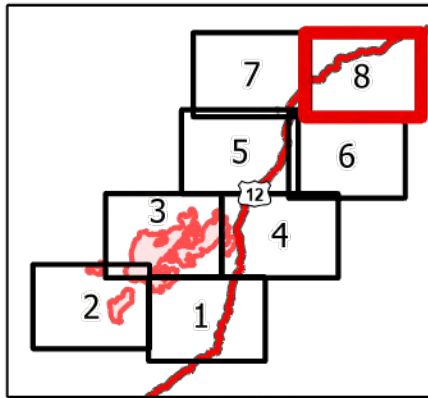
MT-LNF-000962
7/31/21

4,977 acres
IR updated 7/30/21 00:40

- Drop Point
- Value at Risk
- Landmark
- Landing or Log Deck
- ◆ Repeater
- ◇ MileMarkers
- Trail
- National Designated Trail
- Closed FS Road

DIV L

Page 8 of 8



Datum: North American 1983

