

Granite Pass Complex

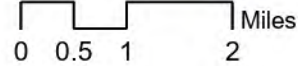
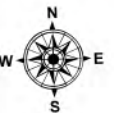
MT-LNF-000962

8/1/21

4,977 acres

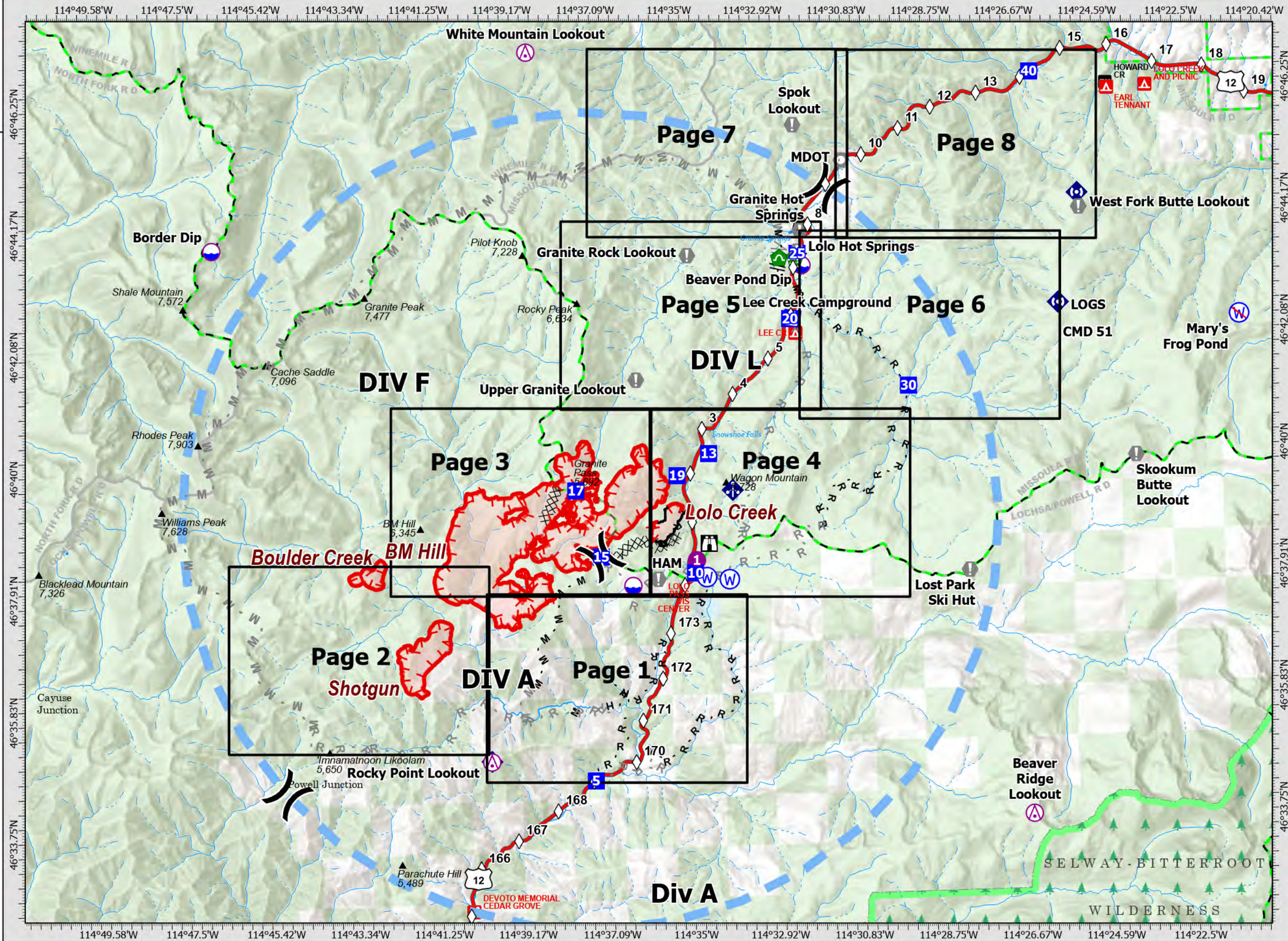
IR updated 7/30/21 00:40

- Aerial Hazard
- Dip Site
- Hellspot
- Division Break
- Drop Point
- Camp
- Lookout
- Value at Risk
- Landmark
- Water Development or Draft Site
- Culvert
- Mobile Weather Unit
- Repeater
- Water Source
- Restricted Water Source
- Completed Dozer Line
- Completed Fuel Break
- Completed Hand Line
- Completed Mixed Construction Line
- Planned Fuel Break
- Planned Hand Line
- Planned Mixed Construction Line
- Planned Road as Line
- Temporary Flight Restriction
- Fire Edge
- Contained Line
- Wildfire Daily Fire Perimeter
- Building Footprint
- FS Wilderness Boundary
- IAP Grid Index
- Mile Markers



Datum: North American 1983

Updated: 7/31/2021 1918



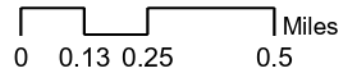
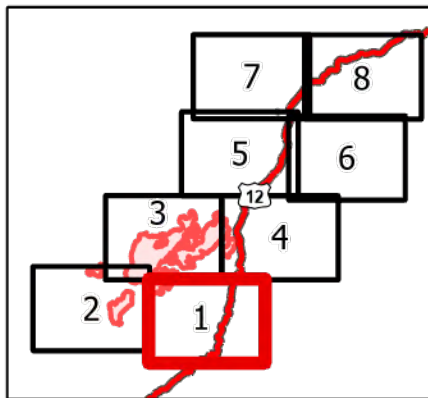
Granite Pass Complex

MT-LNF-000962
8/1/21

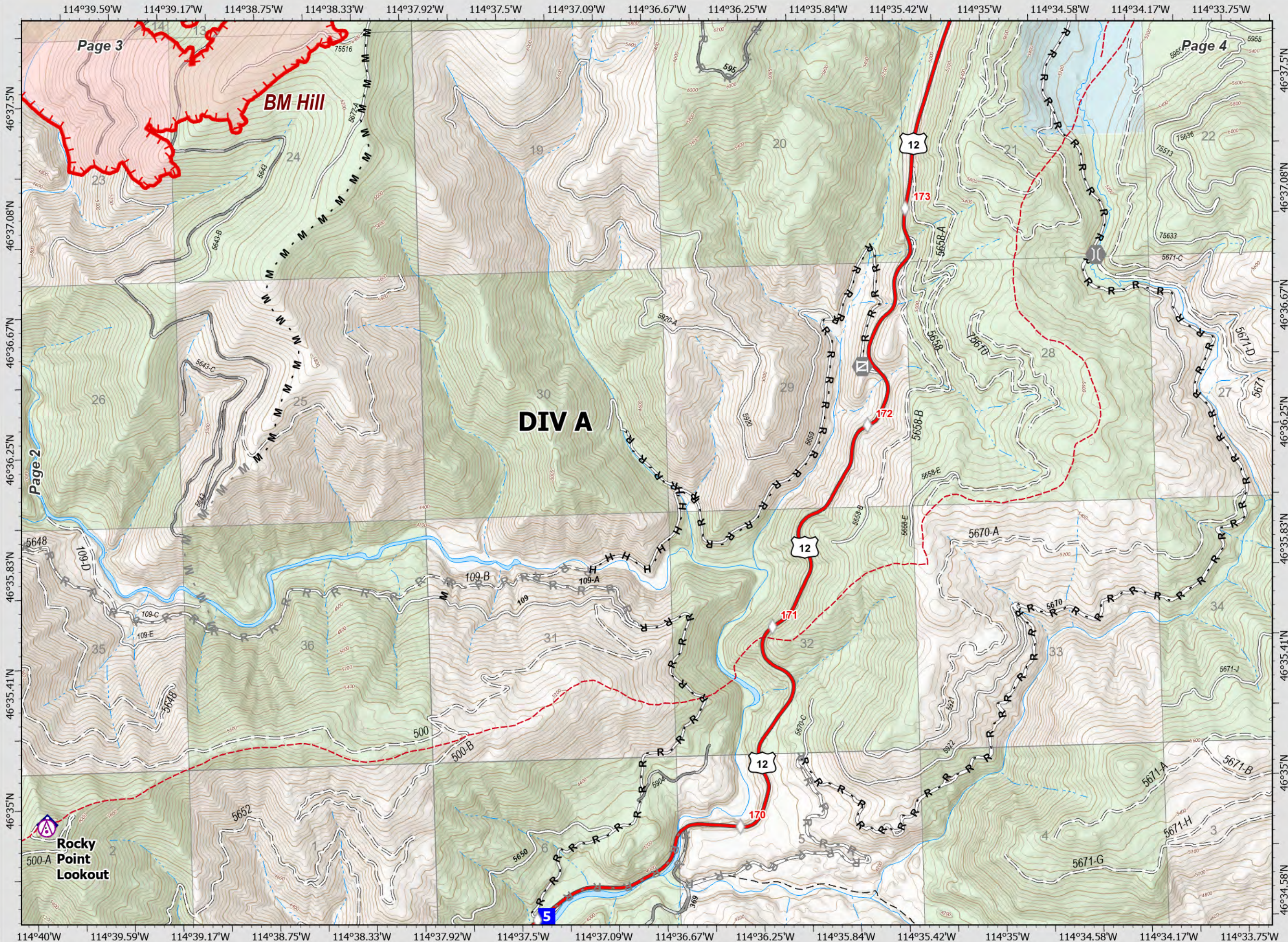
4,977 acres
IR updated 7/30/21 00:40

- Wildfire Daily Fire Perimeter
- Aerial Hazard
- Drop Point
- Gate
- Bridge
- Mobile Weather Unit
- MileMarkers
- Completed Hand Line
- Completed Mixed Construction Line
- Completed Road as Line
- Planned Mixed Construction Line
- Planned Road as Line
- Fire Edge
- Trail
- National Designated Trail
- Closed FS Road

Div A Page 1 of 8



Datum: North American 1983



Granite Pass Complex

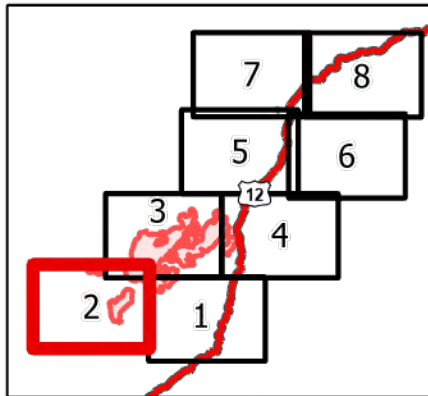
MT-LNF-000962
8/1/21

4,977 acres
IR updated 7/30/21 00:40

-  Wildfire Daily Fire Perimeter
-  Planned Mixed Construction Line
-  Planned Road as Line
-  Fire Edge
-  Trail
-  National Designated Trail
-  Closed FS Road

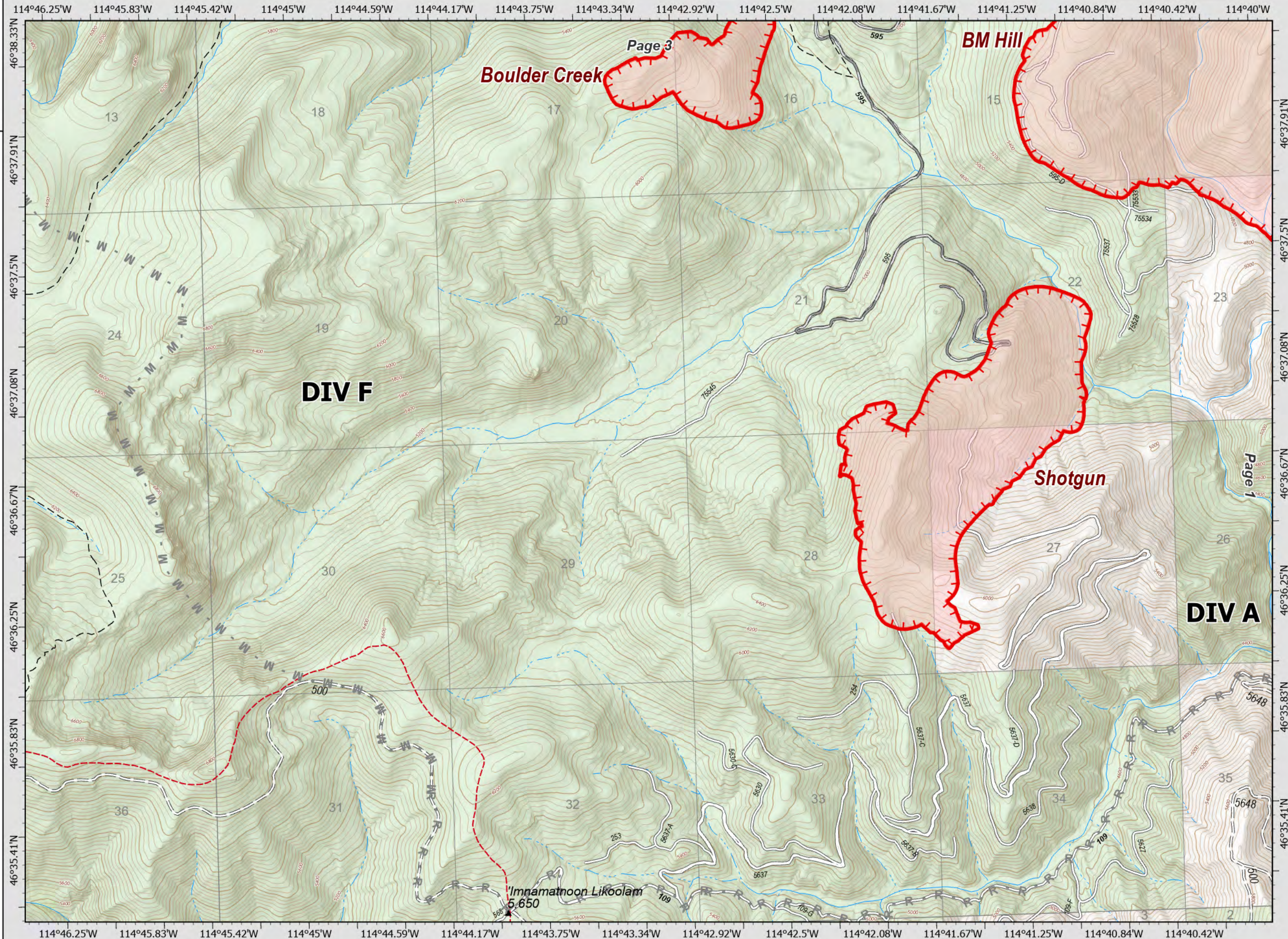
DIV A & F

Page 2 of 8



0 0.13 0.25 0.5 Miles



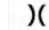







Datum: North American 1983



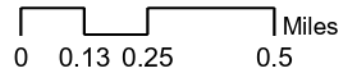
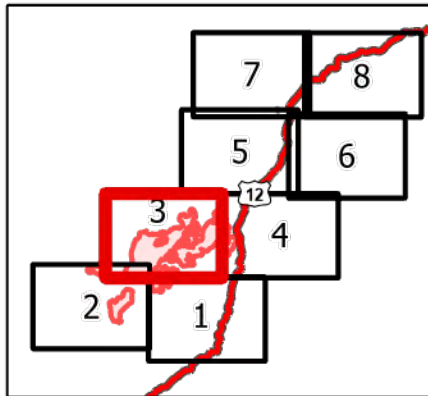
Granite Pass Complex

MT-LNF-000962
8/1/21

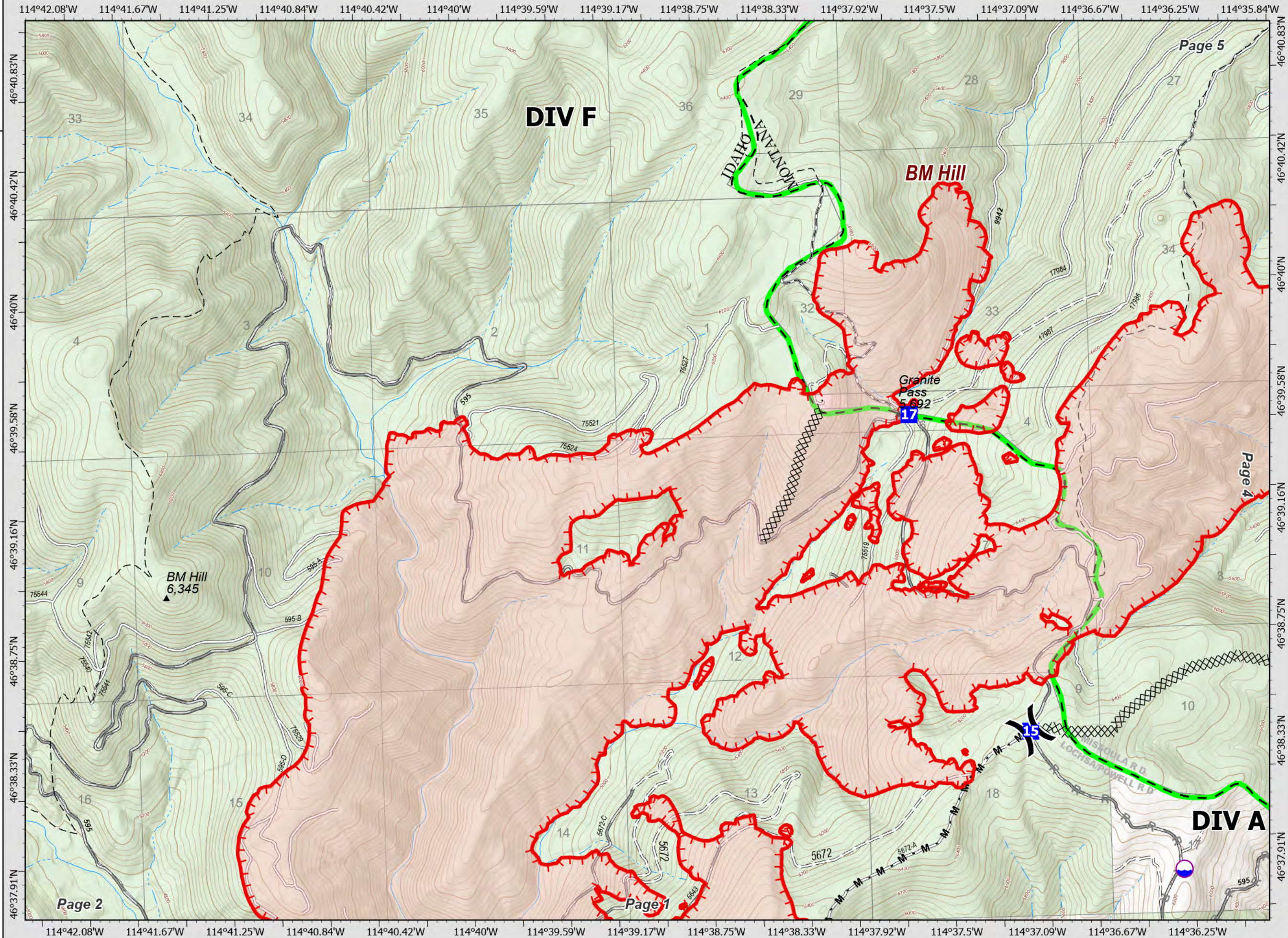
4,977 acres
IR updated 7/30/21 00:40

-  Wildfire Daily Fire Perimeter
-  Dip Site
-  Division Break
-  Drop Point
-  Completed Dozer Line
-  Completed Mixed Construction Line
-  Planned Road as Line
-  Fire Edge
-  Trail
-  Closed FS Road

DIV A & F Page 3 of 8



Datum: North American 1983



Granite Pass Complex

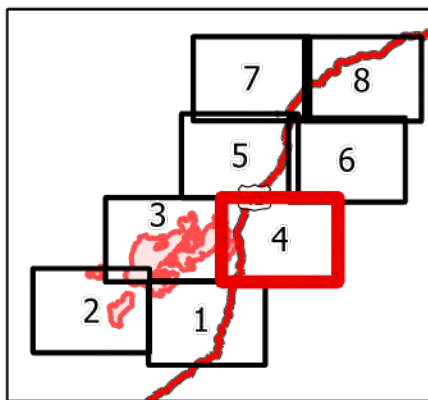
MT-LNF-000962
8/1/21

4,977 acres
IR updated 7/30/21 00:40

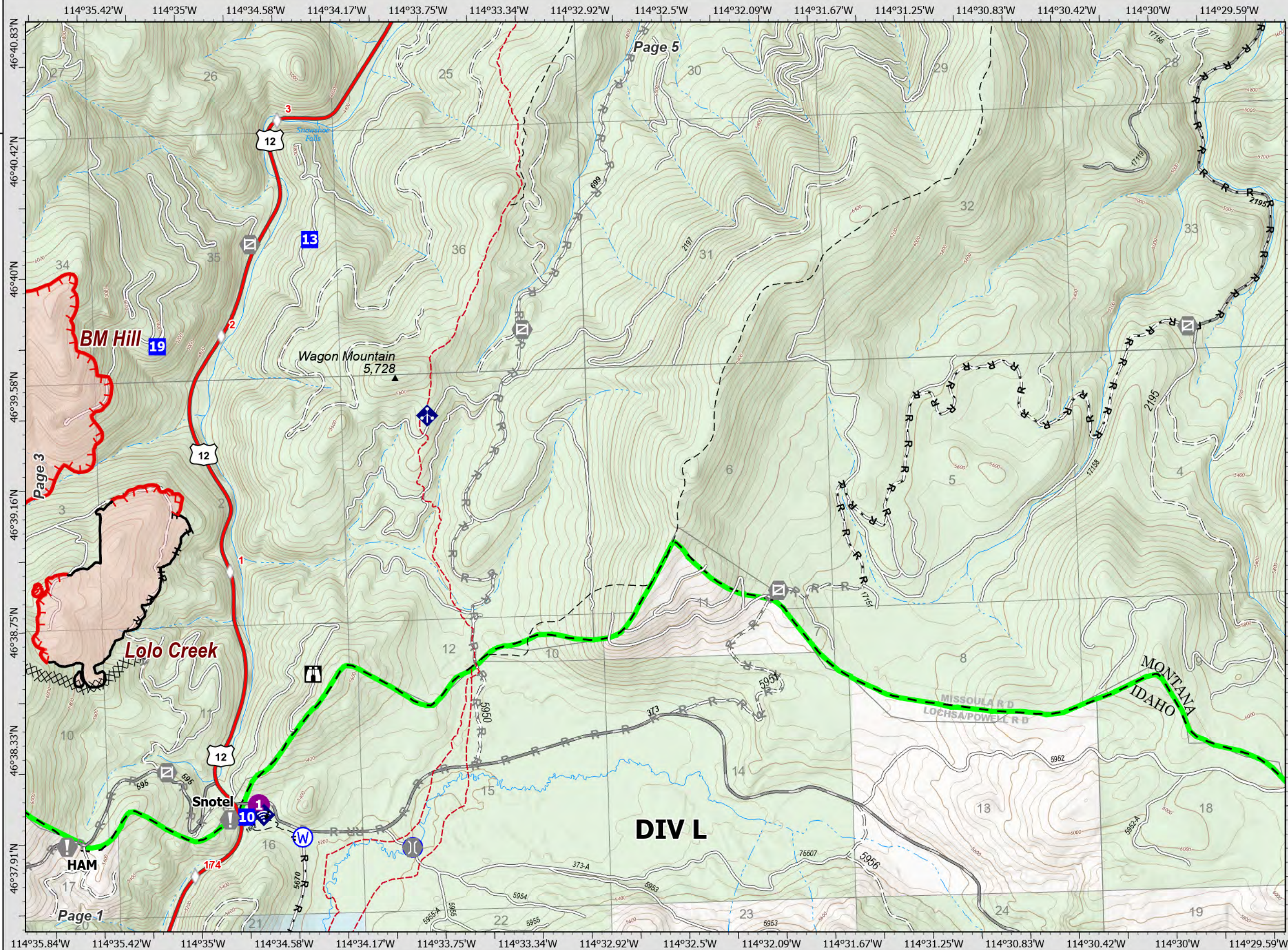
- | | |
|-------------------------------|---------------------------|
| Wildfire Daily Fire Perimeter | Completed Dozer Line |
| Helispot | Completed Hand Line |
| Drop Point | Completed Road as Line |
| Lookout | Planned Hand Line |
| Value at Risk | Planned Road as Line |
| Gate | Fire Edge |
| Bridge | Contained Line |
| Mobile Weather Unit | Trail |
| Internet Access | National Designated Trail |
| Water Source | Closed FS Road |
| MileMarkers | |

DIV L

Page 4 of 8



0 0.13 0.25 0.5 Miles
Datum: North American 1983



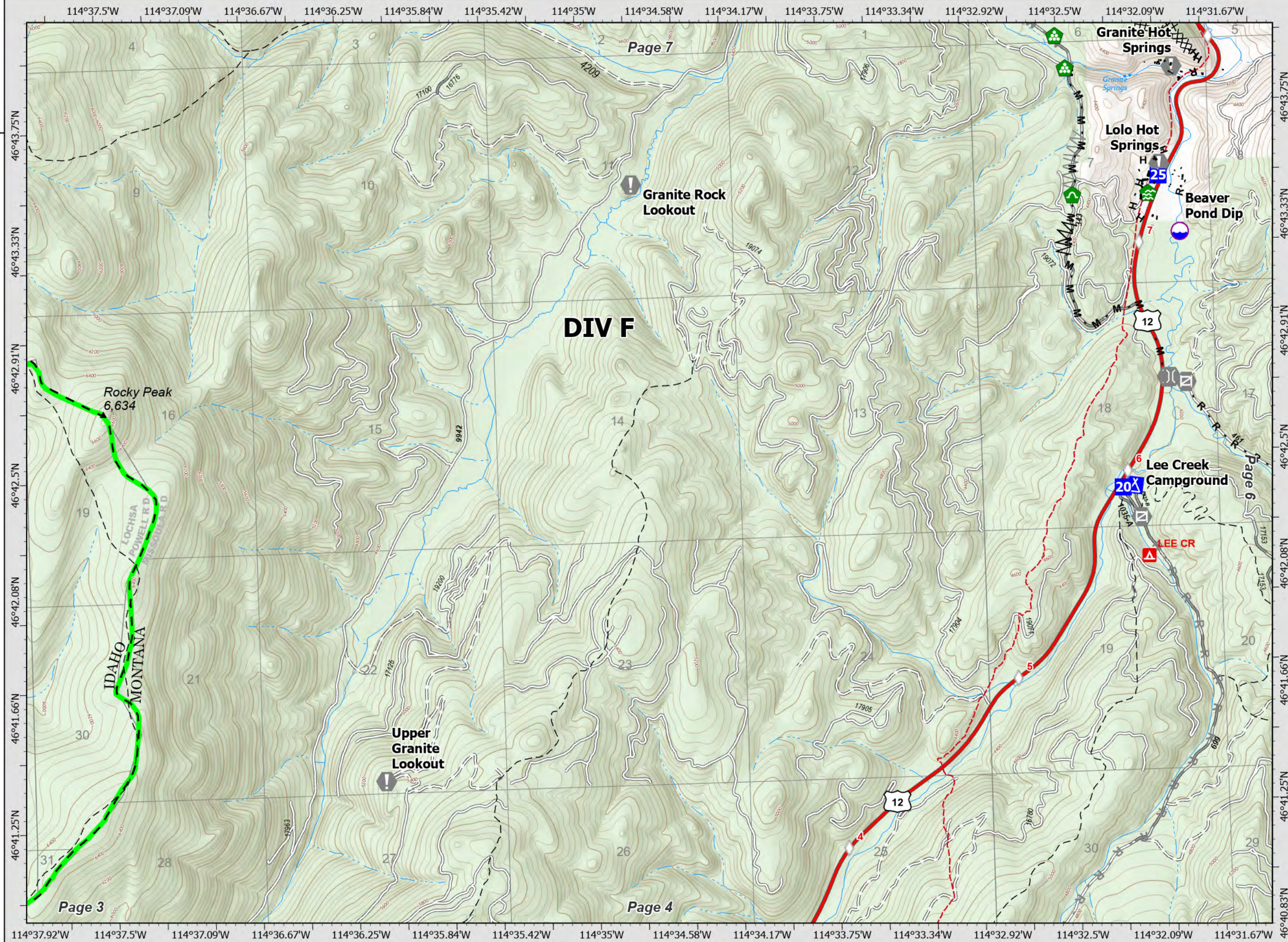
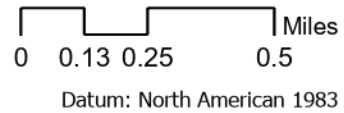
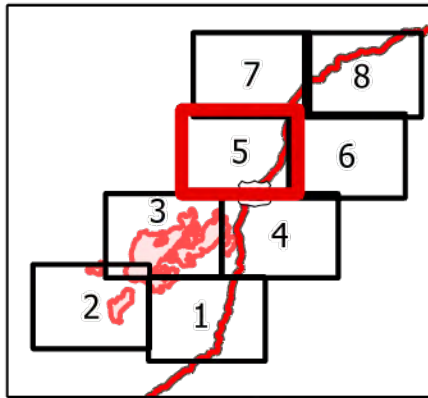
Granite Pass Complex

MT-LNF-000962
8/1/21

4,977 acres
IR updated 7/30/21 00:40

- Dip Site
- Drop Point
- Camp
- Value at Risk
- Gate
- Bridge
- Water Development or Draft Site
- Landing or Log Deck
- Culvert
- MileMarker
- Completed Dozer Line
- Completed Fuel Break
- Completed Hand Line
- Completed Mixed Construction Line
- Completed Road as Line
- Planned Fuel Break
- Planned Mixed Construction Line
- Planned Road as Line
- Trail
- National Designated Trail











DIV F Page 5 of 8



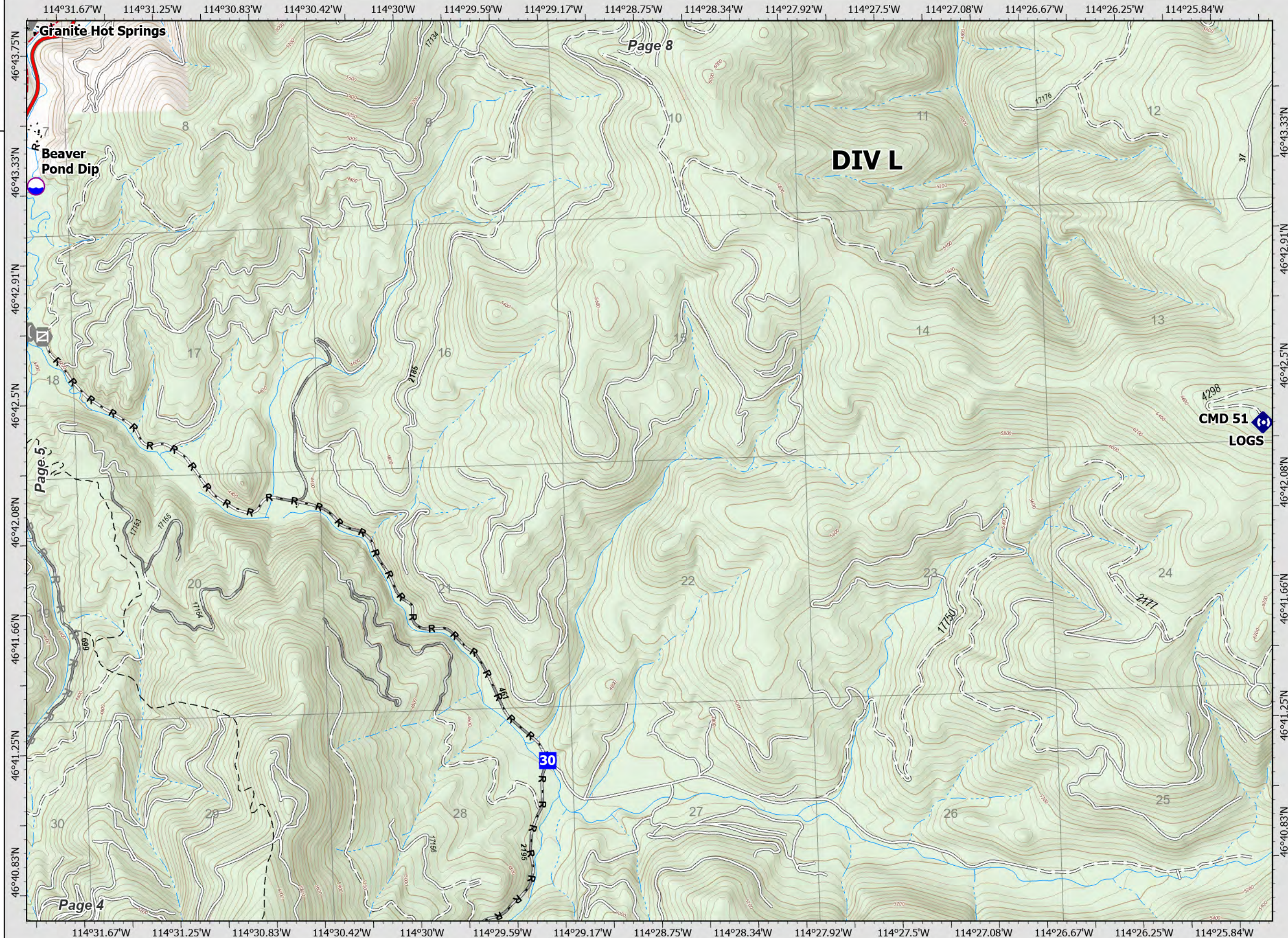
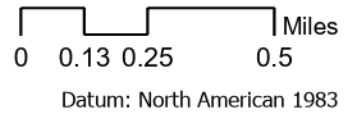
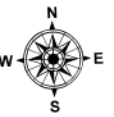
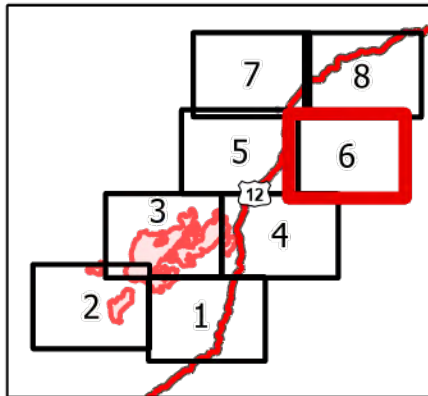
Granite Pass Complex

MT-LNF-000962
8/1/21

4,977 acres
IR updated 7/30/21 00:40

-  Dip Site
-  Drop Point
-  Value at Risk
-  Gate
-  Bridge
-  Water Development or Draft Site
-  Repeater
- H** - Completed Hand Line
- M** - Completed Mixed Construction Line
- R** - Completed Road as Line
- R** - Planned Road as Line
-  Trail
-  National Designated Trail
-  Closed FS Road

DIV L Page 6 of 8



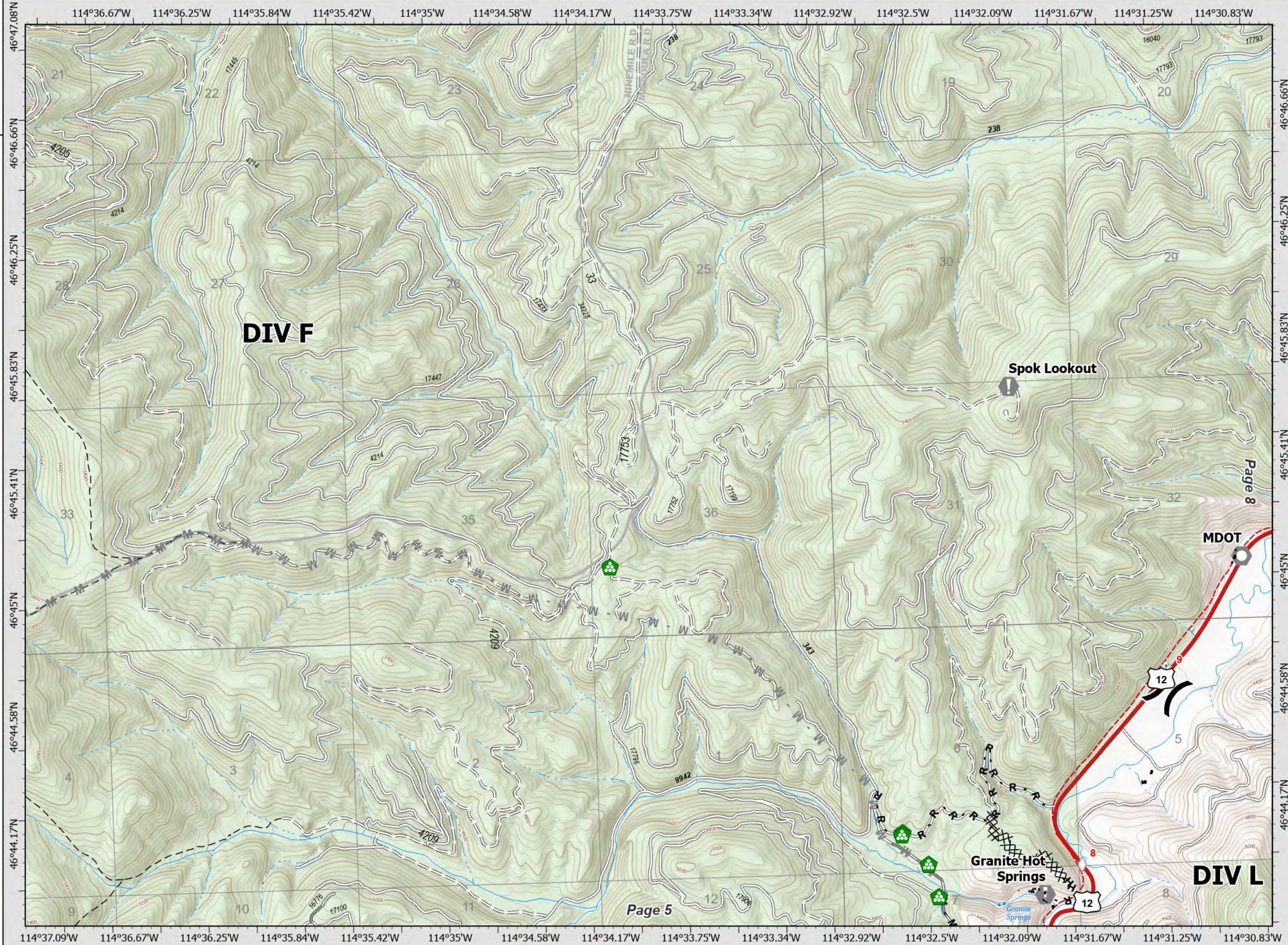
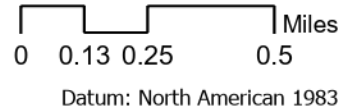
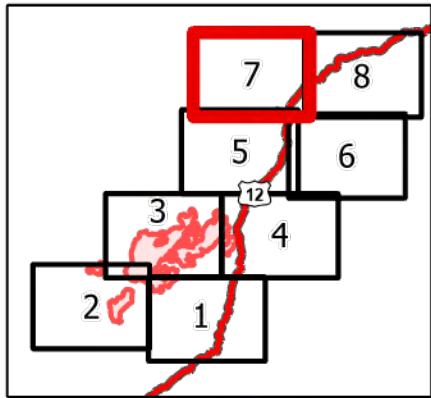
Granite Pass Complex

MT-LNF-000962
8/1/21

4,977 acres
IR updated 7/30/21 00:40

- (X) Division Break
- (V) Value at Risk
- (O) Landmark
- (L) Landing or Log Deck
- (◇) MileMarkers
- (X) Completed Dozer Line
- (H) Completed Hand Line
- (M) Completed Mixed Construction Line
- (R) Completed Road as Line
- (M) Planned Mixed Construction Line
- (- - -) Trail
- (- - -) National Designated Trail
- (.....) Closed FS Road










DIV L Page 7 of 8



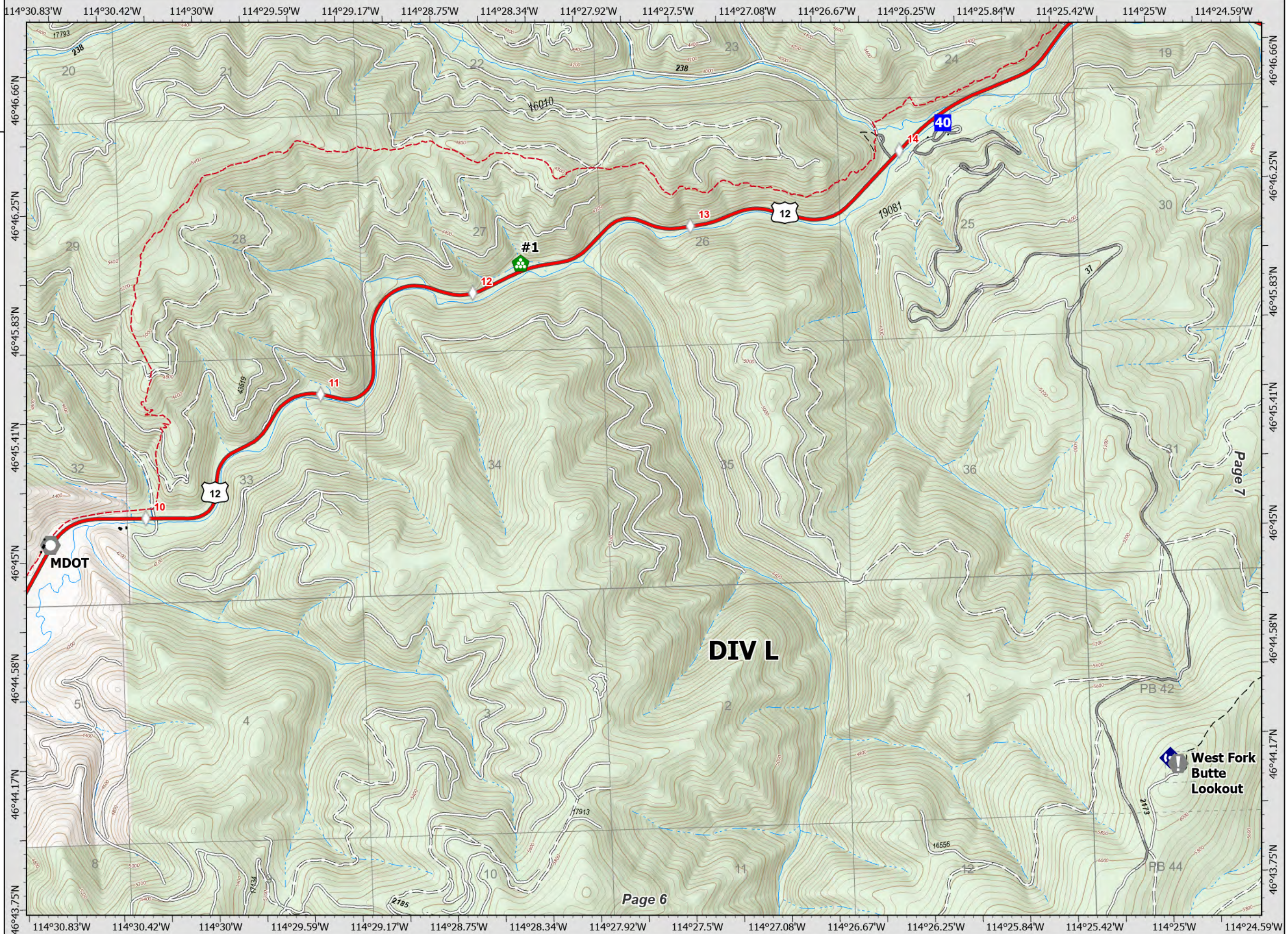
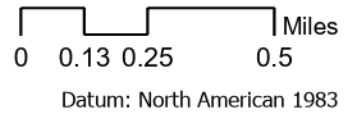
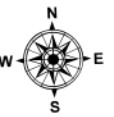
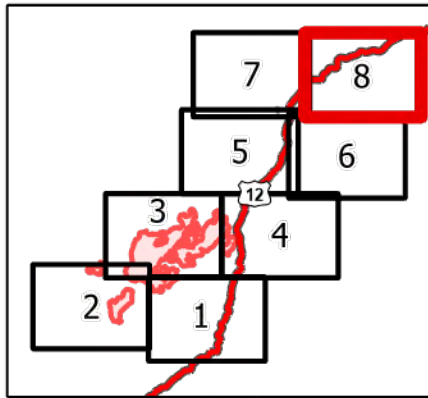
Granite Pass Complex

MT-LNF-000962
8/1/21

4,977 acres
IR updated 7/30/21 00:40

-  Drop Point
-  Value at Risk
-  Landmark
-  Landing or Log Deck
-  Repeater
-  MileMarkers
-  Trail
-  National Designated Trail
-  Closed FS Road

DIV L Page 8 of 8



Page 7

Page 6

West Fork Butte Lookout