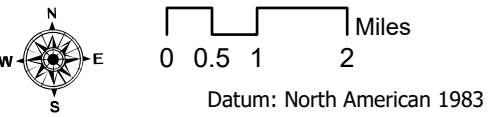
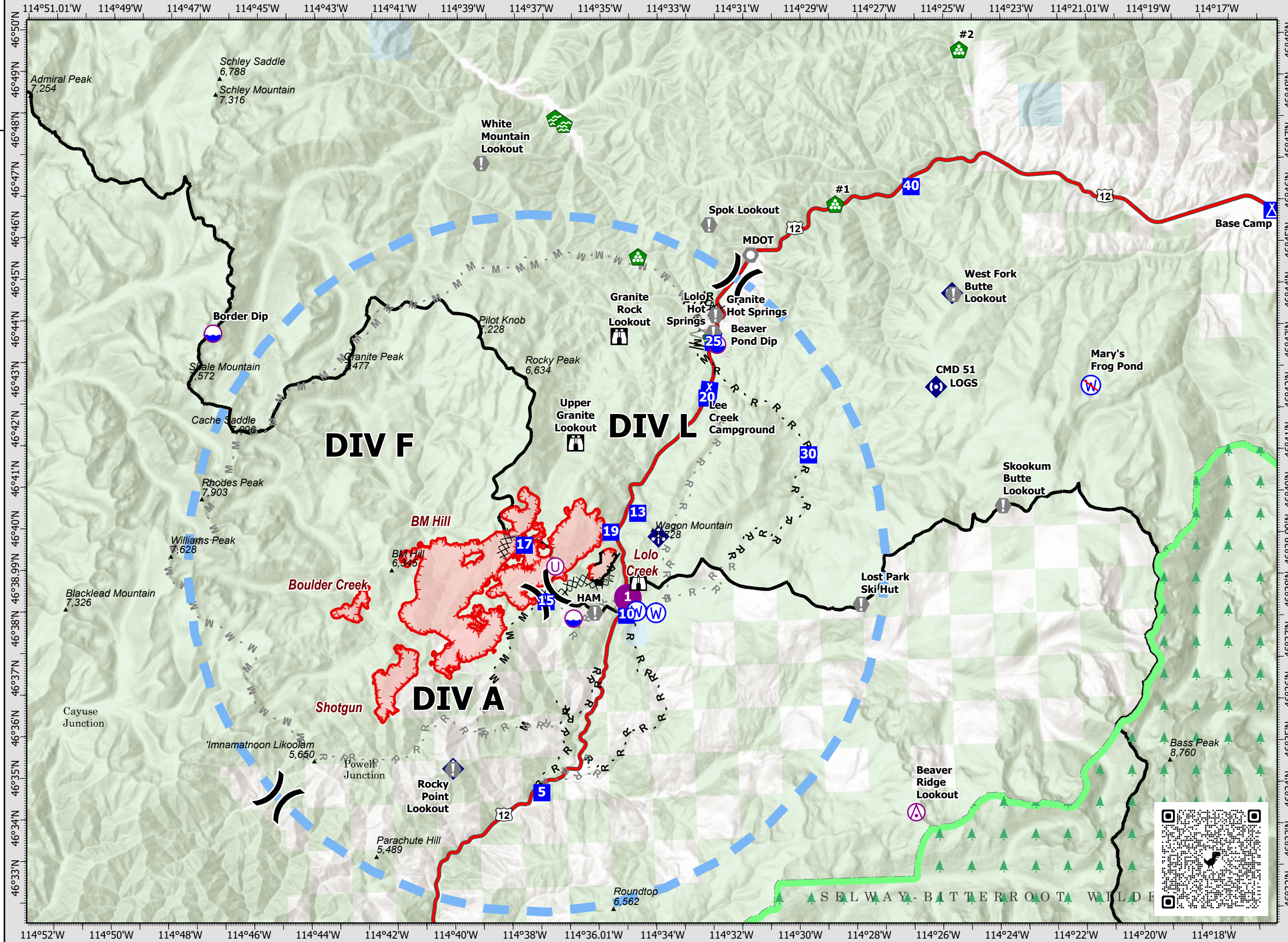


## Granite Pass Complex

MT-LNF-000962  
8/3/21

5,739 acres  
IR updated 8/2/21 @ 00:45

- Aerial Hazard
- Dip Site
- Helispot
- Unimproved Landing Area
- Division Break
- Drop Point
- Camp
- Lookout
- Value at Risk
- Landmark
- Water Development or Draft Site
- Landing or Log Deck
- Mobile Weather Unit
- Repeater
- Water Source
- Restricted Water Source
- Completed Dozer Line
- Completed Fuel Break
- Completed Hand Line
- Completed Mixed Construction Line
- Completed Road as Line
- Planned Fuel Break
- Planned Hand Line
- Planned Mixed Construction Line
- Planned Road as Line
- Temporary Flight Restriction
- Fire Edge
- Contained Line
- Wildfire Daily Fire Perimeter
- FS Wilderness Boundary





Point Type	Point Name	Comments	Latitude	Longitude
Aerial Hazard	Beaver Ridge Lookout	Repeater Site	46° 33.790' N	114° 26.522' W
Aerial Hazard	Rocky Point Lookout	Repeater Site	46° 34.937' N	114° 39.944' W
Aerial Hazard	White Mountain Lookout	Repeater Site	46° 47.062' N	114° 38.597' W
Camp	Lee Creek Camp		46° 42.381' N	114° 32.159' W
Camp	Lolo Pass	Helispot Available	46° 38.108' N	114° 34.751' W
Dip Site	Beaver Pond Dip		46° 38.108' N	114° 34.751' W
Dip Site	Border Dip		46° 43.807' N	114° 46.559' W
Dip Site	Pumpkin Dip (2)	6,180' elevation, 6,000 gal each, Type I Heli	46° 37.885' N	114° 36.309' W
Drop Point	DP-10	Lolo Pass Visitor Center	46° 38.075' N	114° 34.755' W
Drop Point	DP-13		46° 40.110' N	114° 34.341' W
Drop Point	DP-15		46° 38.394' N	114° 37.086' W
Drop Point	DP-17		46° 39.540' N	114° 37.669' W
Drop Point	DP-19		46° 39.748' N	114° 35.141' W
Drop Point	DP-20	Lee Creek Campground	46° 42.375' N	114° 32.220' W
Drop Point	DP-25	Lolo Hotsprings	46° 43.487' N	114° 31.988' W
Drop Point	DP-30		46° 41.174' N	114° 29.319' W
Drop Point	DP-40	Earl Tenant	46° 46.481' N	114° 26.077' W
Drop Point	DP-5		46° 34.570' N	114° 37.376' W
Helispot	H-1	Lolo Visitor Center Parking Lot	46° 38.117' N	114° 34.717' W
Restricted Water Source	Mary's Frog Pond	NO DIP	46° 42.232' N	114° 21.039' W
Unimproved Landing Area		Heavy Dust Abatement Needed	46° 38.941' N	114° 36.792' W
Value at Risk	Granite Rock Lookout		46° 43.509' N	114° 34.731' W
Value at Risk	Granite Rock Lookout		46° 43.509' N	114° 34.731' W
Value at Risk	HAM Radio site	Structure Wrapped	46° 37.989' N	114° 35.682' W
Value at Risk	Lost Park Ski Hut		46° 37.995' N	114° 27.932' W
Value at Risk	Point 118 Electronic Site		46° 42.316' N	114° 25.572' W
Value at Risk	Skookum Butte Lookout		46° 39.879' N	114° 23.708' W
Value at Risk	Snotel	Structure Wrapped	46° 38.068' N	114° 34.840' W
Value at Risk	Spok Lookout		46° 45.692' N	114° 32.011' W
Value at Risk	Upper Granite Lookout		46° 41.404' N	114° 36.093' W
Value at Risk	Upper Granite Lookout		46° 41.404' N	114° 36.093' W
Value at Risk	West Fork Butte Lookout		46° 44.145' N	114° 24.952' W

