

IAP

Granite Pass Complex

MT-LNF-000962
8/4/21

5,739 acres
IR updated 8/2/21 @ 00:45

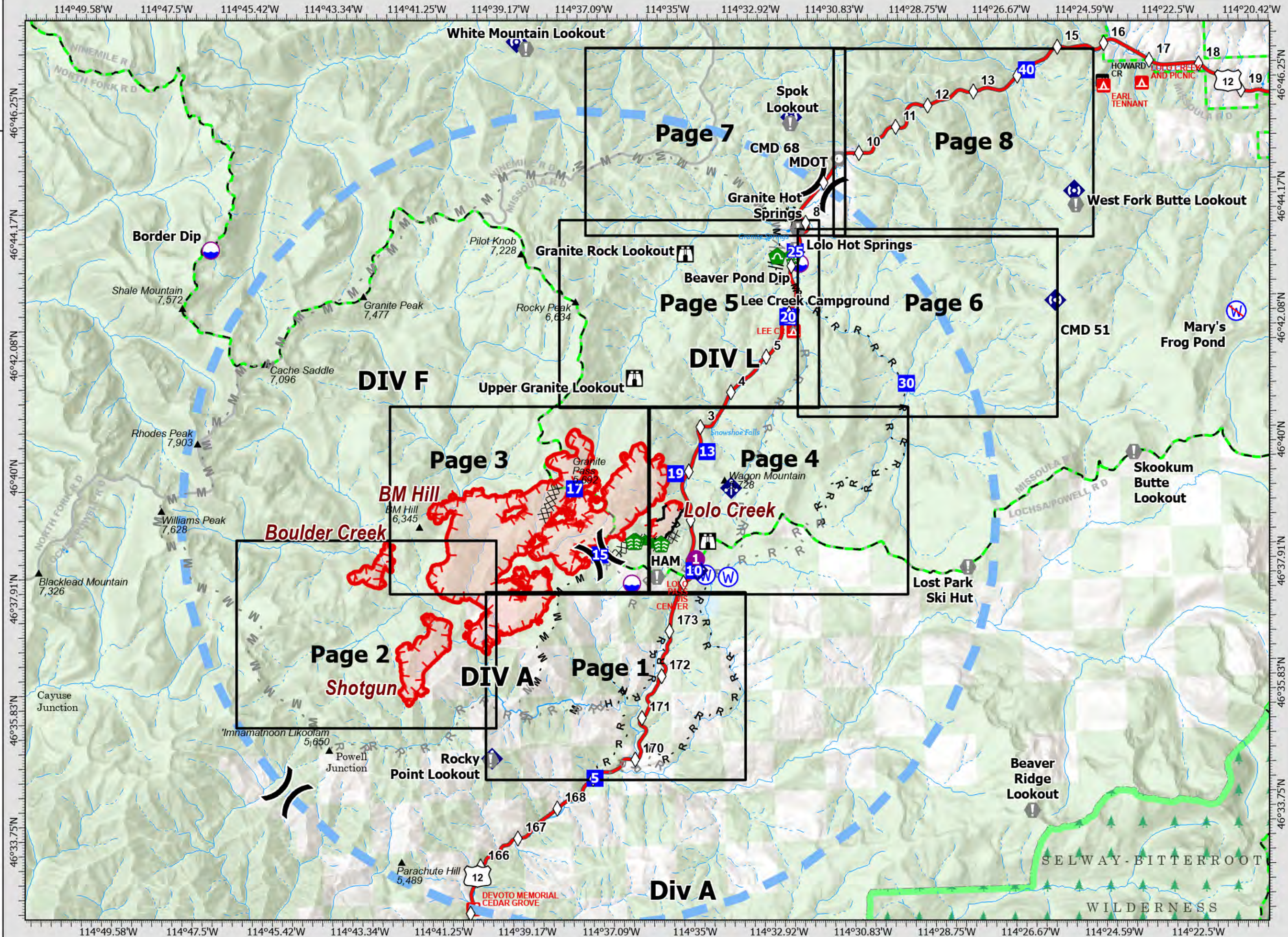
- Dip Site
- Helispot
- Division Break
- Drop Point
- Camp
- Lookout
- Value at Risk
- Landmark
- Water Development or Draft Site
- Stream Crossing
- Repair Point
- Culvert
- Mobile Weather Unit
- Internet Access
- Repeater
- Water Source
- Restricted Water Source
- Completed Dozer Line
- Completed Fuel Break
- Completed Hand Line
- Completed Mixed Construction Line
- Planned Fuel Break
- Planned Hand Line
- Planned Mixed Construction Line
- Planned Road as Line
- Repair Line
- Temporary Flight Restriction
- Fire Edge
- Contained Line
- Wildfire Daily Fire Perimeter
- Building Footprint
- FS Wilderness Boundary
- IAP Grid Index
- Mile Markers



0 0.5 1 2 Miles

Datum: North American 1983

Updated: 8/3/2021 00:01



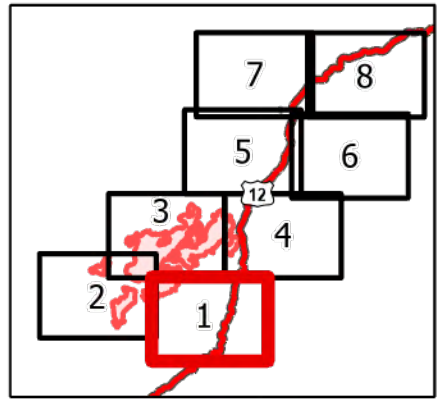
Granite Pass Complex

MT-LNF-000962
8/4/21

5,739 acres
IR updated 8/2/21 @ 00:45

- Wildfire Daily Fire Perimeter
- Drop Point
- Value at Risk
- Gate
- Bridge
- Mobile Weather Unit
- MileMarkers
- Completed Hand Line
- Completed Mixed Construction Line
- Completed Road as Line
- Planned Mixed Construction Line
- Planned Road as Line
- Fire Edge
- Trail
- National Designated Trail
- Closed FS Road

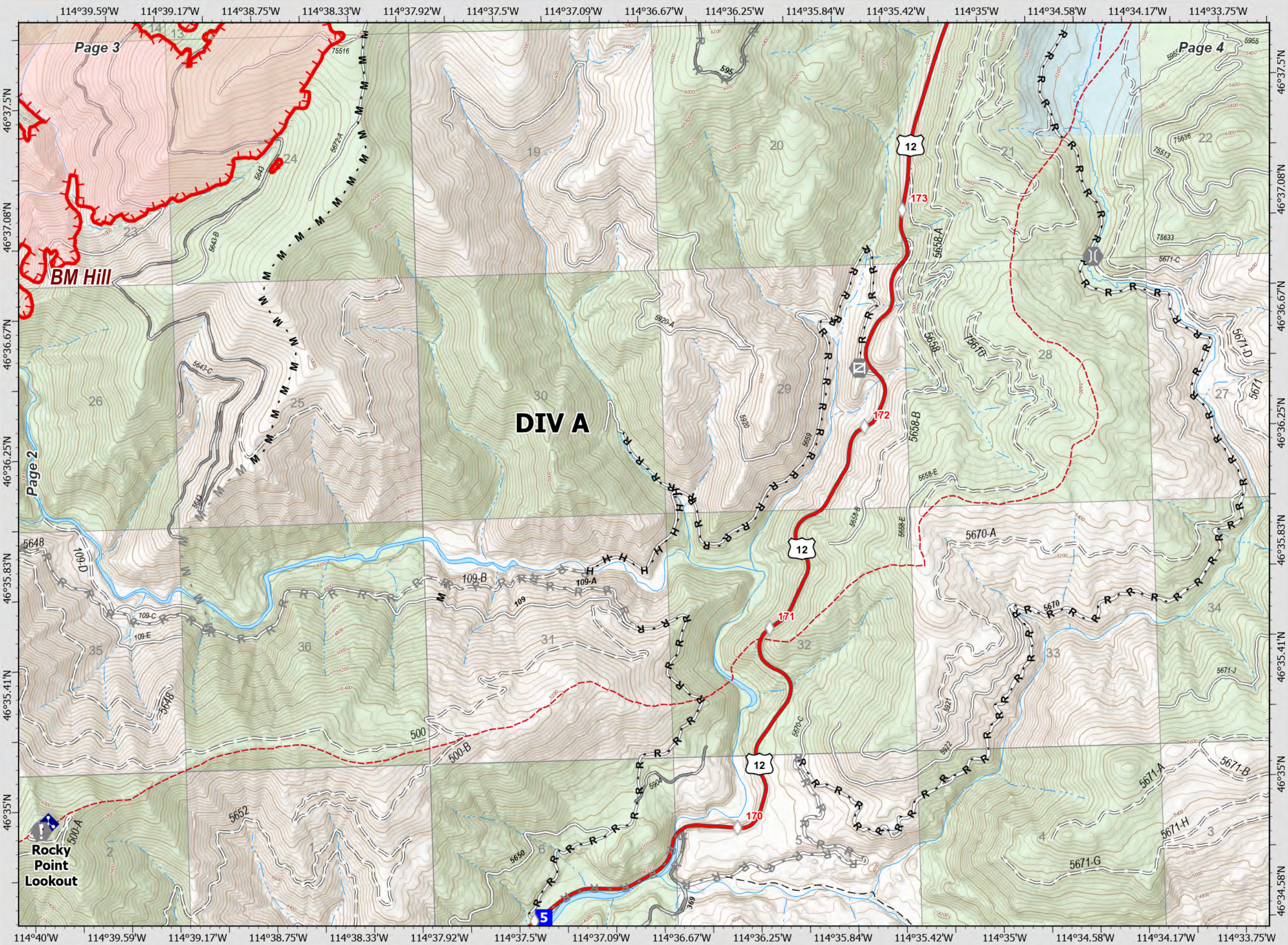
Div A Page 1 of 8



0 0.25 0.5 Miles

Datum: North American 1983

NR IMT1 GISS Updated: 8/3/2021 1957



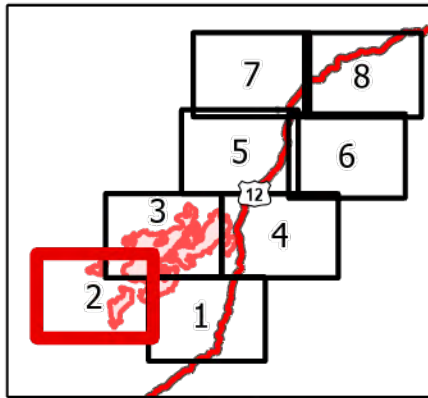
Granite Pass Complex

MT-LNF-000962
8/4/21

5,739 acres
IR updated 8/2/21 @ 00:45

-  Wildfire Daily Fire Perimeter
-  Planned Mixed Construction Line
-  Planned Road as Line
-  Fire Edge
-  Trail
-  National Designated Trail
-  Closed FS Road

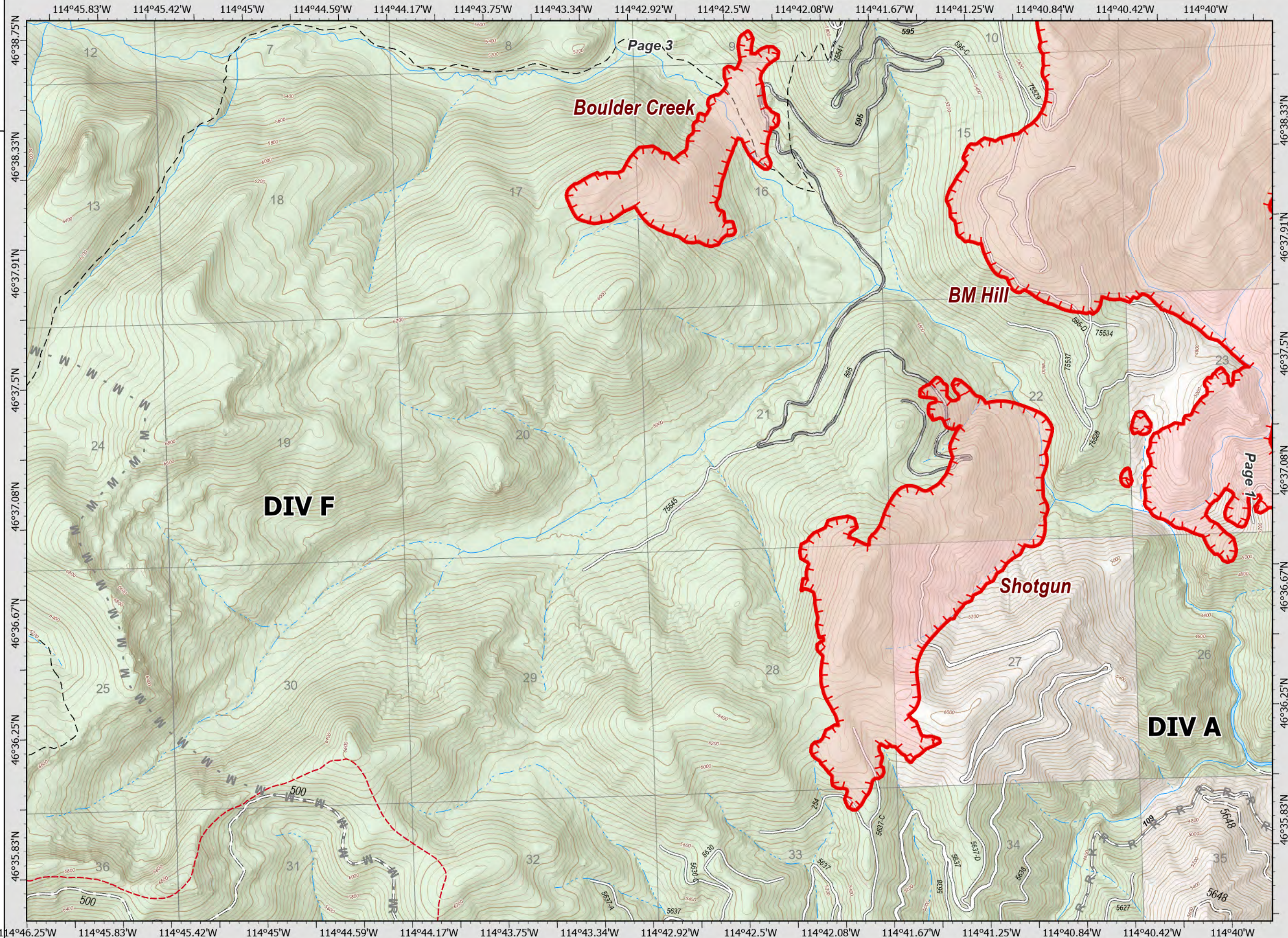
DIV A & F
Page 2 of 8



0 0.25 0.5 Miles

Datum: North American 1983


NR IMT1 GISS Updated: 8/3/2021 1958



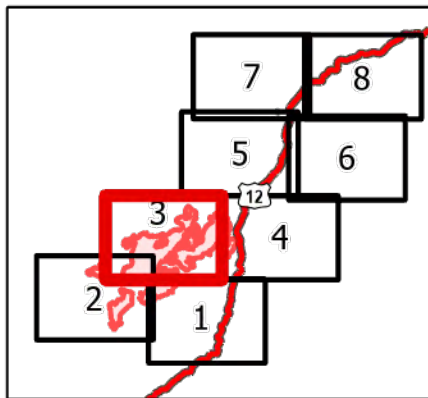
Granite Pass Complex

MT-LNF-000962
8/4/21

5,739 acres
IR updated 8/2/21 @ 00:45

-  Wildfire Daily Fire Perimeter
-  Dip Site
-  Division Break
-  Drop Point
-  Stream Crossing
-  Repair Point
-  Completed Dozer Line
-  Completed Hand Line
-  Completed Mixed Construction Line
-  Planned Road as Line
-  Repair Line
-  Fire Edge
-  Trail
-  Closed FS Road

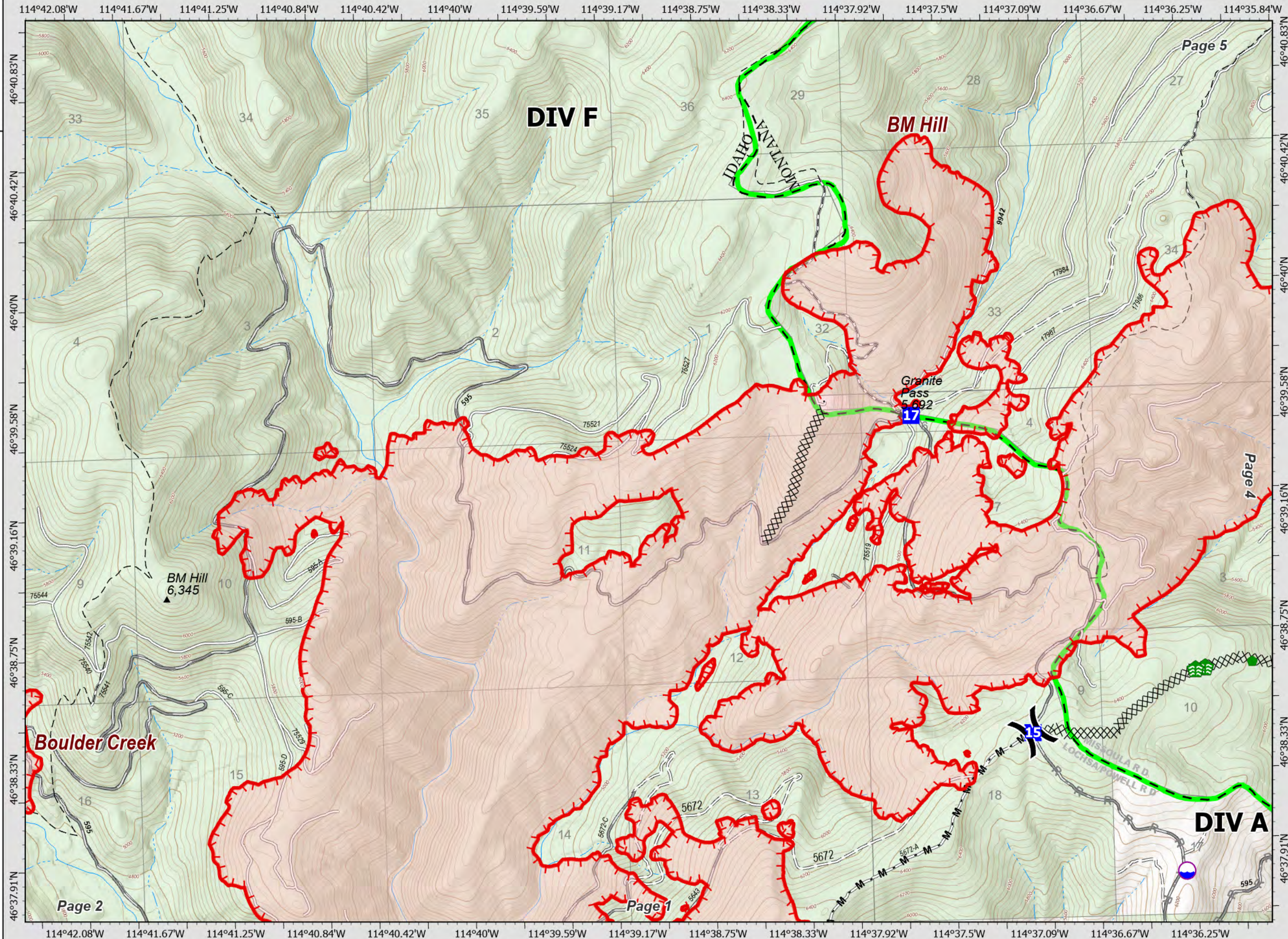
DIV A & F Page 3 of 8



0 0.25 0.5 Miles

Datum: North American 1983

NR IMT1 GISS Updated: 8/3/2021 1958



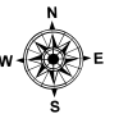
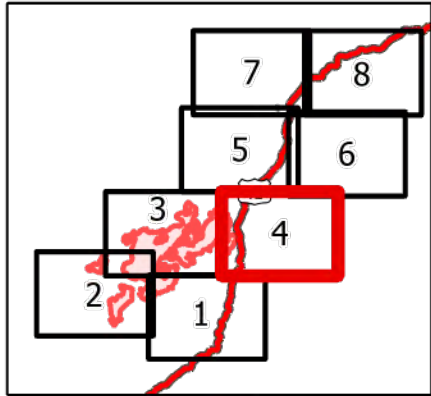
Granite Pass Complex

MT-LNF-000962
8/4/21

5,739 acres
IR updated 8/2/21 @ 00:45

- | | |
|-------------------------------|---------------------------|
| Wildfire Daily Fire Perimeter | MileMarkers |
| Helispot | Completed Dozer Line |
| Drop Point | Completed Hand Line |
| Lookout | Completed Road as Line |
| Value at Risk | Planned Hand Line |
| Gate | Planned Road as Line |
| Bridge | Repair Line |
| Stream Crossing | Fire Edge |
| Repair Point | Contained Line |
| Mobile Weather Unit | Trail |
| Internet Access | National Designated Trail |
| Water Source | Closed FS Road |

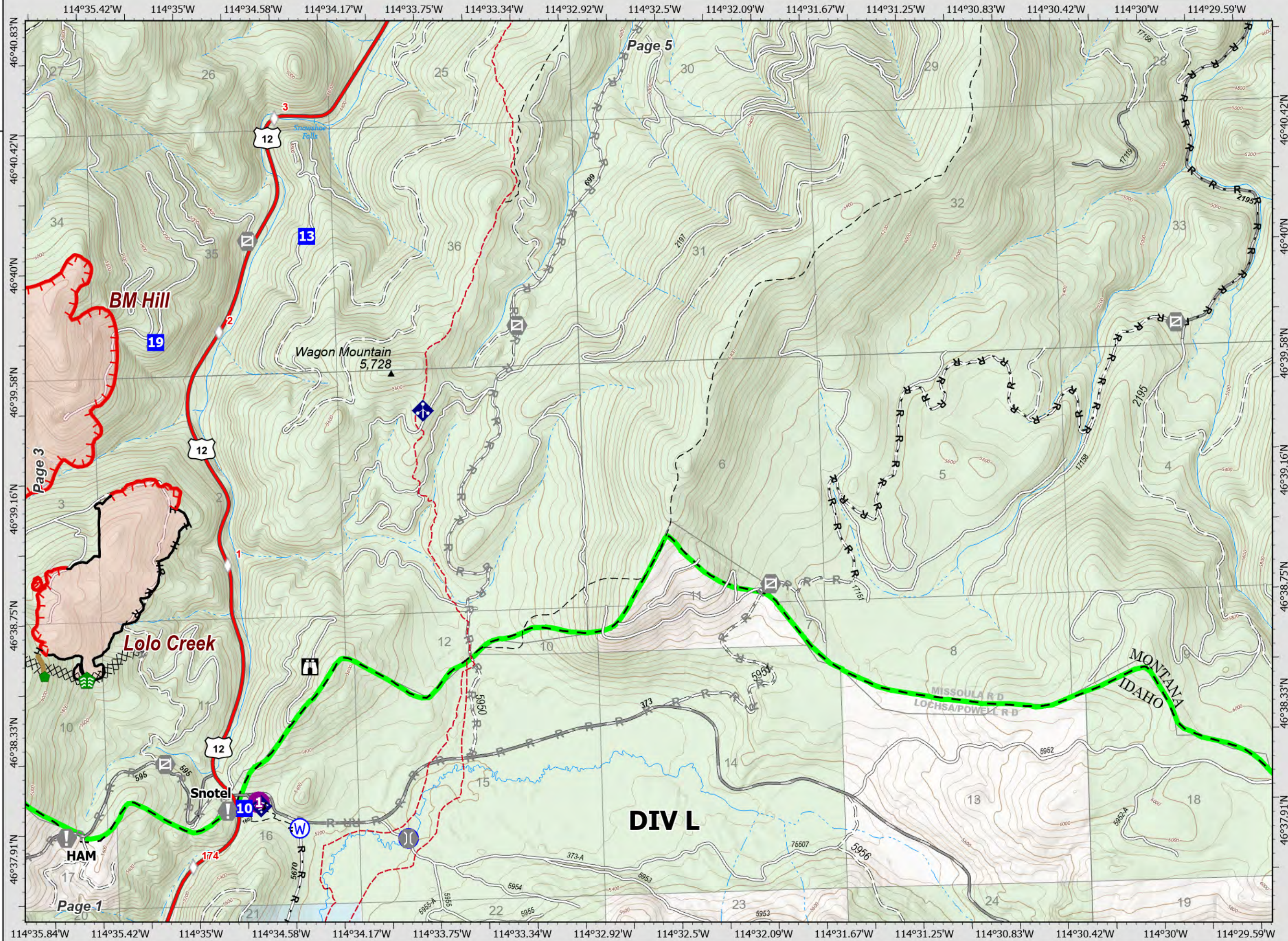
DIV L Page 4 of 8



0 0.25 0.5 Miles

Datum: North American 1983

NR IMT1 GISS Updated: 8/3/2021 1958



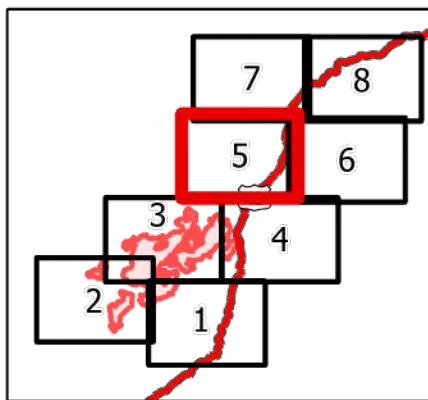
Granite Pass Complex

MT-LNF-000962
8/4/21

5,739 acres
IR updated 8/2/21 @ 00:45

- Dip Site
- Drop Point
- Camp
- Lookout
- Value at Risk
- Gate
- Bridge
- Water Development or Draft Site
- Landing or Log Deck
- Culvert
- MileMarker
- Completed Dozer Line
- Completed Fuel Break
- Completed Hand Line
- Completed Mixed Construction Line
- Completed Road as Line
- Planned Fuel Break
- Planned Mixed Construction Line
- Planned Road as Line
- Trail

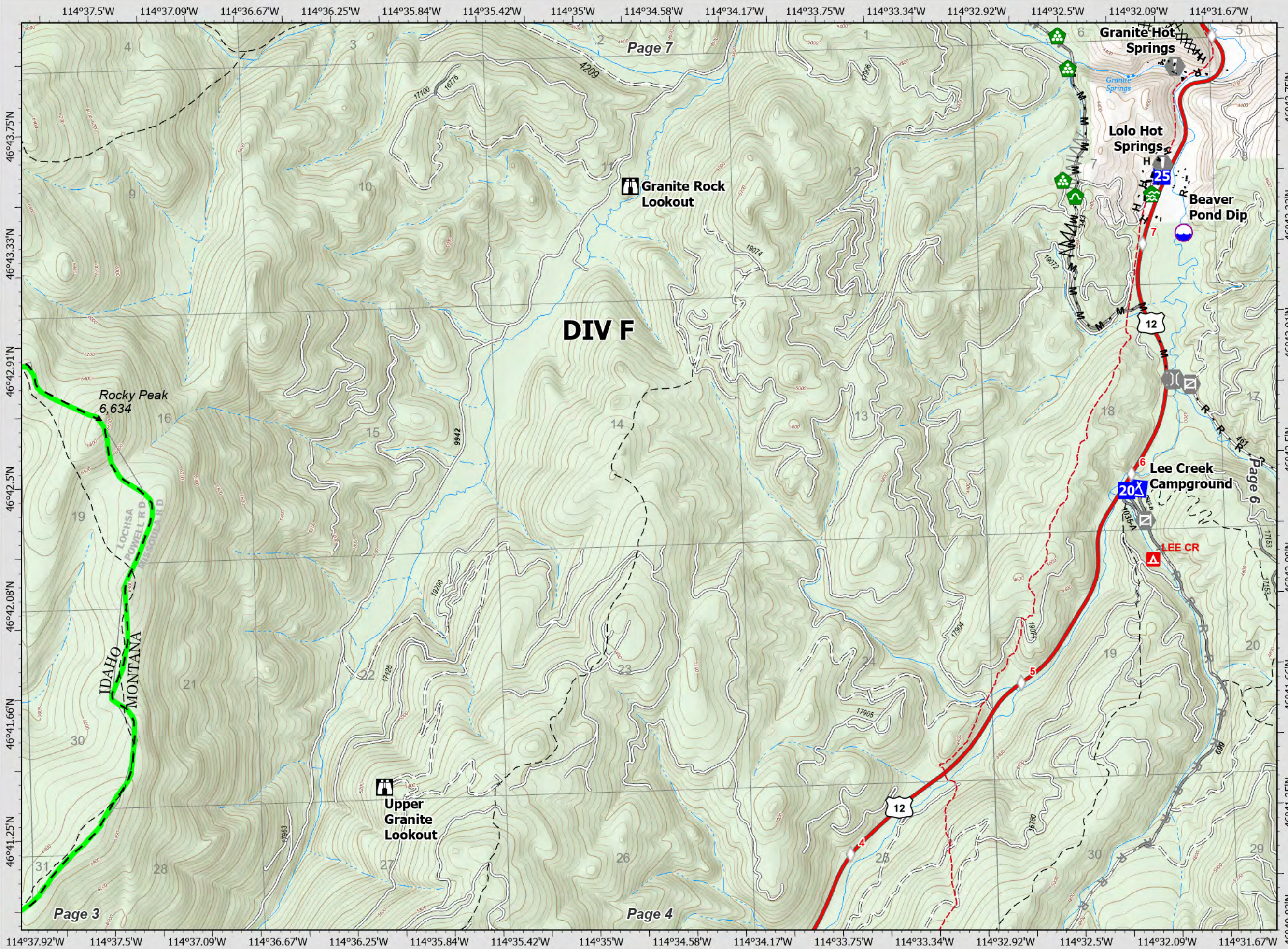
DIV F Page 5 of 8



0 0.25 0.5 Miles

Datum: North American 1983










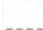
NR IMT1 GISS Updated: 8/3/2021 1959



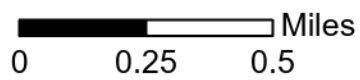
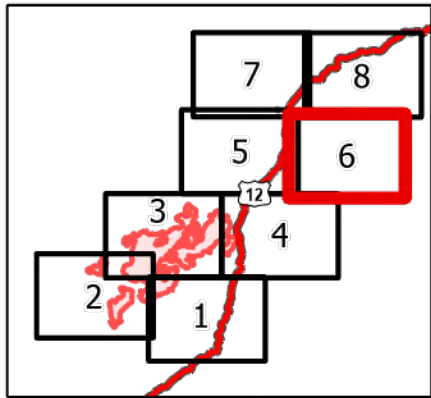
Granite Pass Complex

MT-LNF-000962
8/4/21

5,739 acres
IR updated 8/2/21 @ 00:45

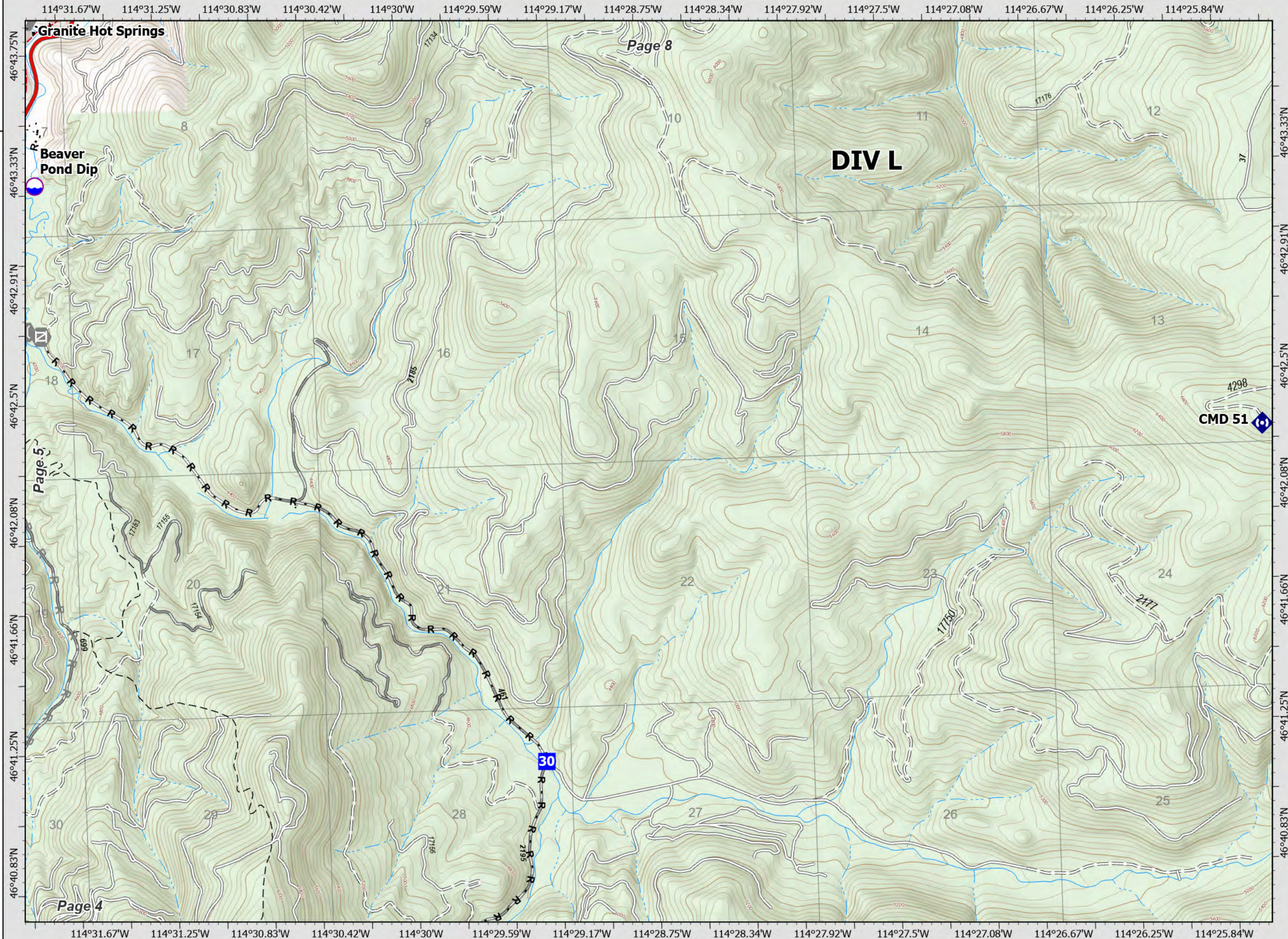
-  Dip Site
-  Drop Point
-  Value at Risk
-  Gate
-  Bridge
-  Water Development or Draft Site
-  Repeater
- H** - Completed Hand Line
- M** - Completed Mixed Construction Line
- R** - Completed Road as Line
- R** - Planned Road as Line
-  Trail
-  National Designated Trail
-  Closed FS Road

DIV L Page 6 of 8



Datum: North American 1983

NR IMT1 GISS Updated: 8/3/2021 1959



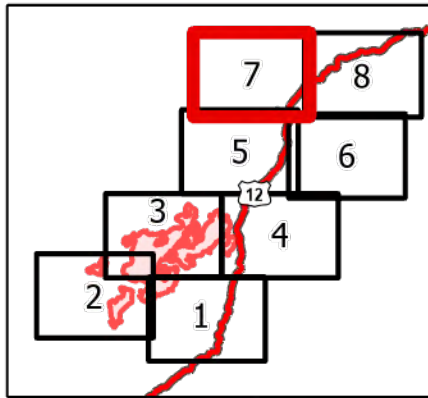
Granite Pass Complex

MT-LNF-000962
8/4/21

5,739 acres
IR updated 8/2/21 @ 00:45

- Division Break
- Value at Risk
- Landmark
- Landing or Log Deck
- Repeater
- MileMarkers
- Completed Dozer Line
- Completed Hand Line
- Completed Mixed Construction Line
- Completed Road as Line
- Planned Mixed Construction Line
- Trail
- National Designated Trail
- Closed FS Road

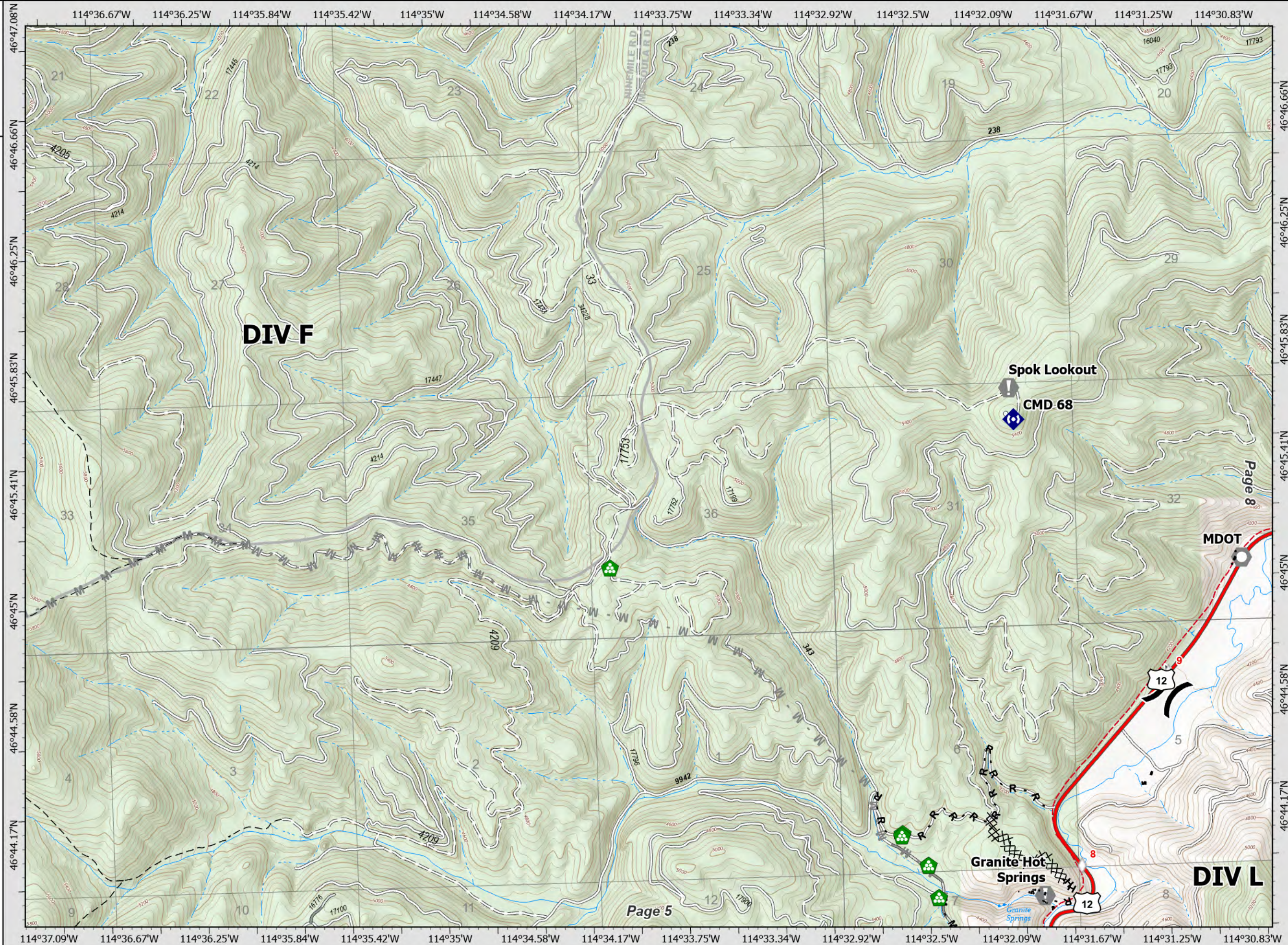
DIV L Page 7 of 8



0 0.25 0.5 Miles

Datum: North American 1983

NR IMT1 GISS Updated: 8/3/2021 1959



Granite Pass Complex

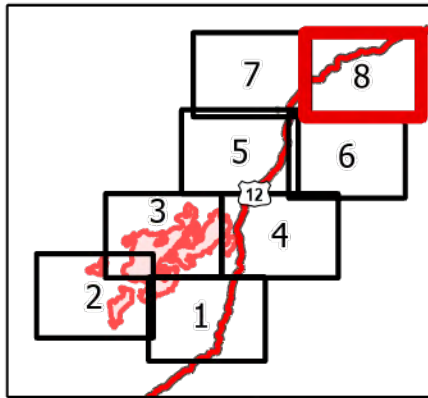
MT-LNF-000962
8/4/21

5,739 acres
IR updated 8/2/21 @ 00:45

- Drop Point
- Value at Risk
- Landmark
- Landing or Log Deck
- ◆ Repeater
- ◇ MileMarkers
- Trail
- National Designated Trail
- Closed FS Road

DIV L

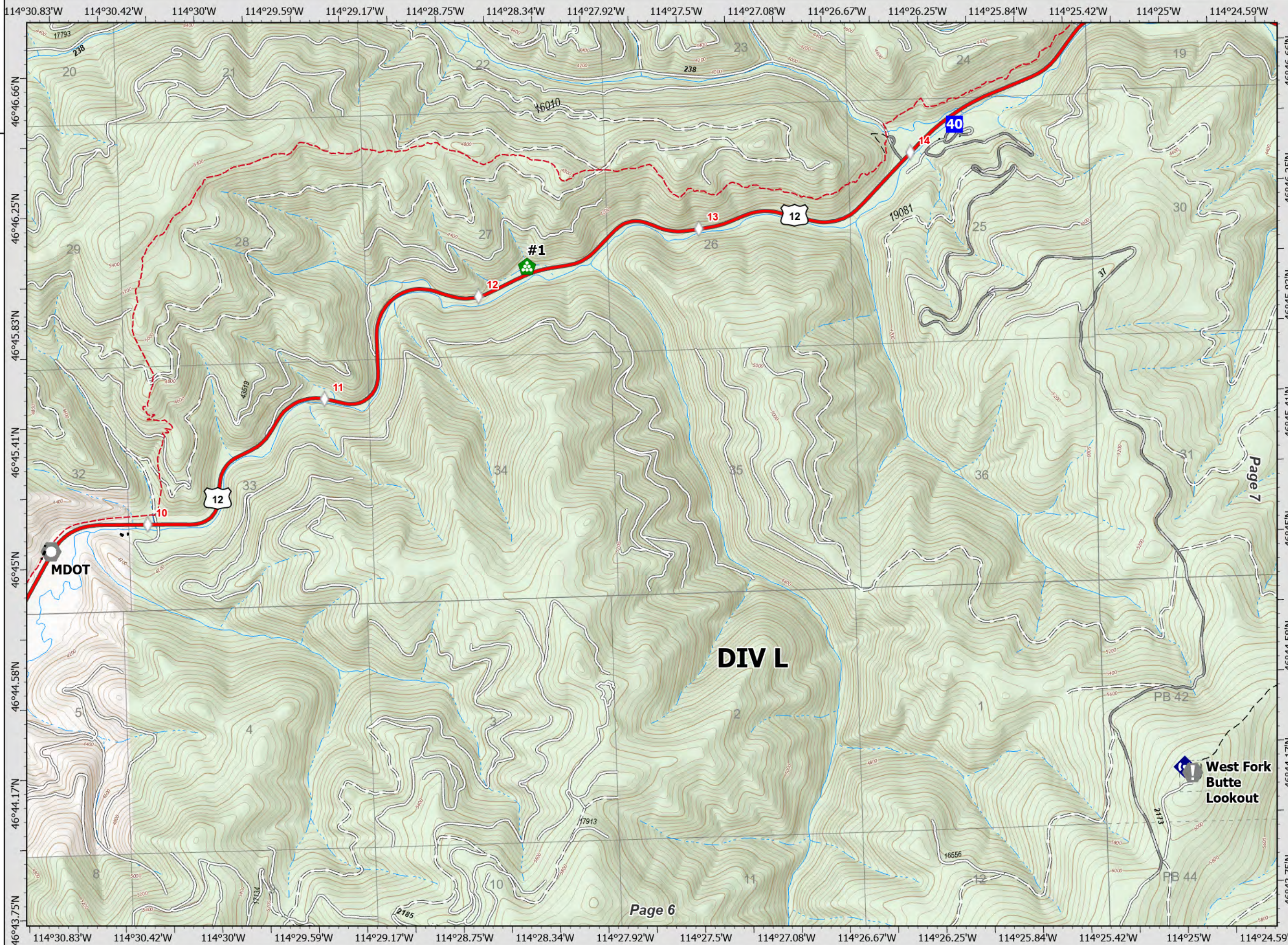
Page 8 of 8



0 0.25 0.5 Miles

Datum: North American 1983

NR IMT1 GISS Updated: 8/3/2021 2000



Page 7

Page 6

West Fork Butte Lookout