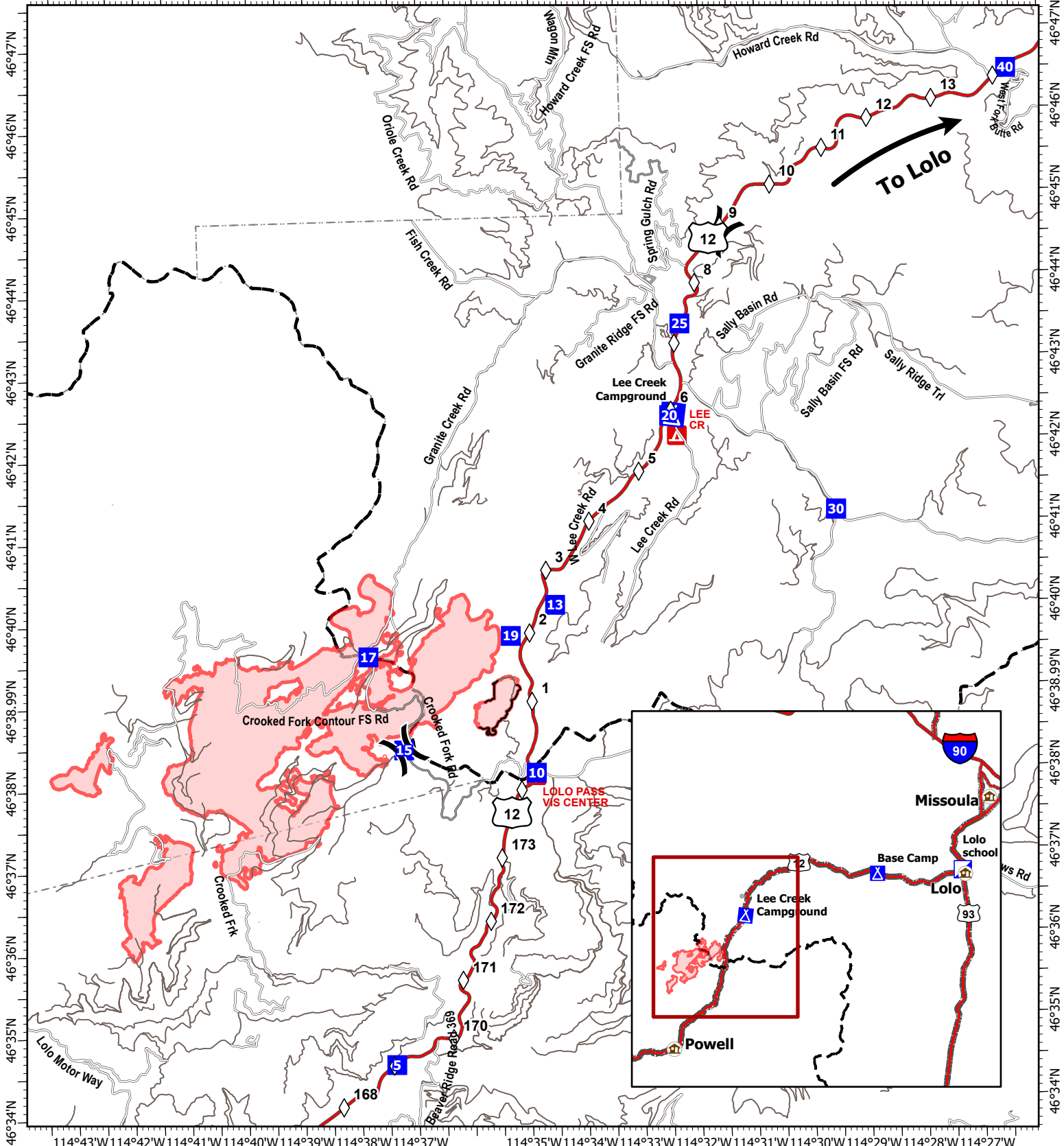





114°43'W 114°42'W 114°41'W 114°40'W 114°39'W 114°38'W 114°37'W 114°35'W 114°34'W 114°33'W 114°32'W 114°31'W 114°30'W 114°29'W 114°28'W 114°27'W 114°26'W

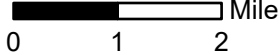


Granite Pass Complex
 MT-LNF-000962
 8/4/21
 5,739 acres
 IR updated 8/2/21 @ 00:45


- ◇ Mile Markers
- ⌘ Division Break
- Drop Point
- ⓧ Camp
- Contained Line
- Primary Highway
- Paved Roads
- Dirt (Not Paved)
- State Boundary
- Other
- Wildfire Daily Fire Perimeter
- Campground
- 🏠 Visitor Center
- Forest Service Roads
- State Boundary
- County Boundary





Datum: North American 1983



CIIMT15 GISS Updated: 8/3/2021 2105