

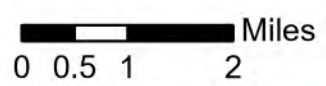
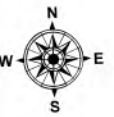
# IAP

## Granite Pass Complex

MT-LNF-000962  
8/6/21

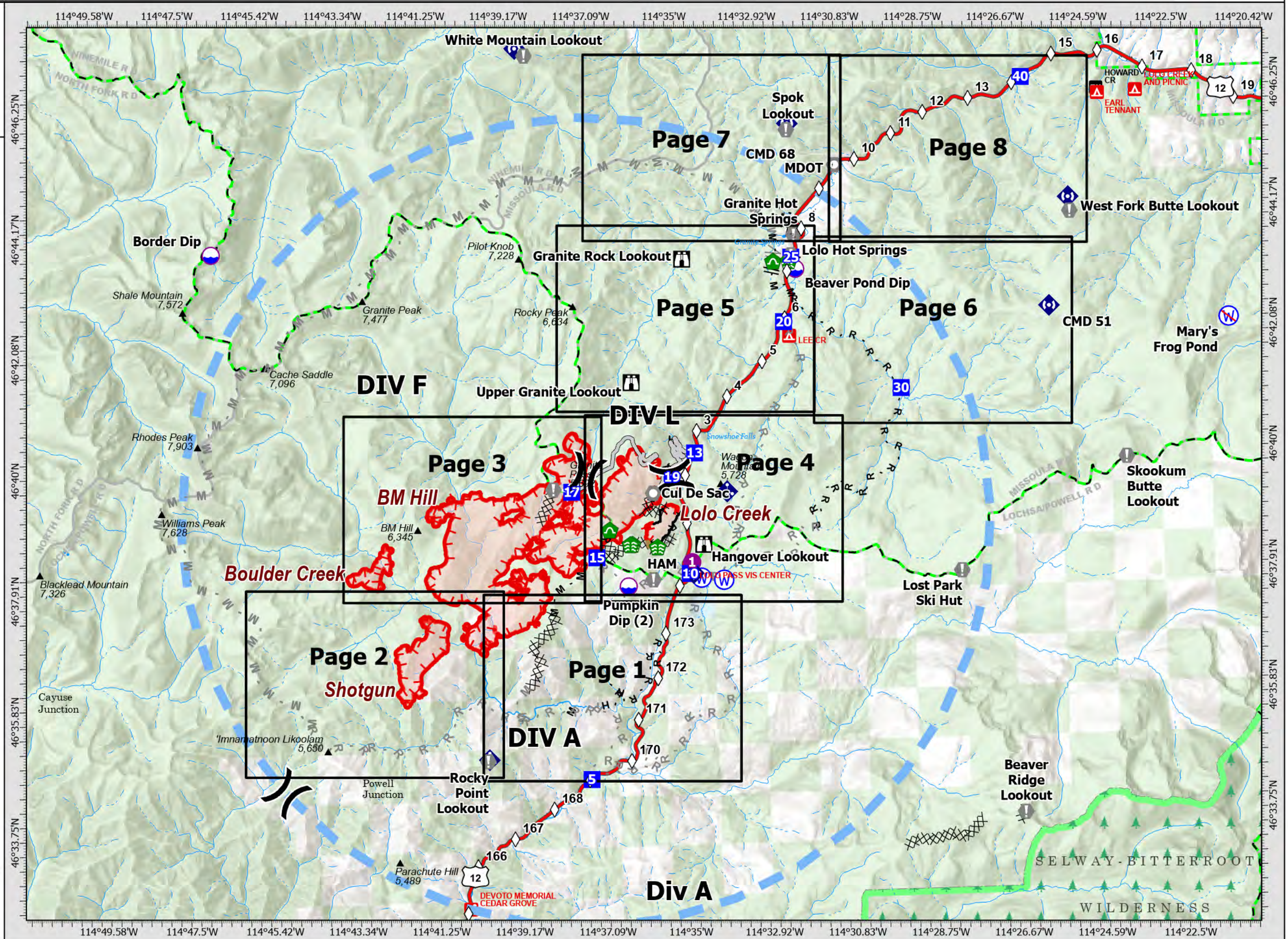
5,739 acres  
IR updated 8/5/21 @ 01:30

- Dip Site
- Helispot
- Division Break
- Drop Point
- Lookout
- Value at Risk
- Landmark
- Water Development or Draft Site
- Stream Crossing
- Culvert
- Mobile Weather Unit
- Internet Access
- Repeater
- Water Source
- Restricted Water Source
- Completed Dozer Line
- Completed Fuel Break
- Completed Hand Line
- Completed Mixed Construction Line
- Completed Road as Line
- Planned Fuel Break
- Planned Hand Line
- Planned Mixed Construction Line
- Planned Road as Line
- Access or Improved Road
- Repair Line
- Temporary Flight Restriction
- Fire Edge
- Contained Line
- Wildfire Daily Fire Perimeter
- Building Footprint
- FS Wilderness Boundary
- IAP Grid Index
- Mile Markers



Datum: North American 1983

Updated: 8/5/2021 1332



# Granite Pass Complex

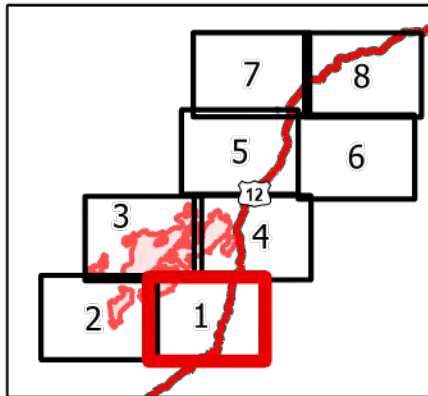
MT-LNF-000962  
8/6/21

5,739 acres  
IR updated 8/5/21 @ 01:30

- ▬ Wildfire Daily Fire Perimeter
- Drop Point
- Value at Risk
- ⊗ Gate
- ⊕ Bridge
- ◆ Mobile Weather Unit
- ◇ MileMarkers
- XX Completed Dozer Line
- H Completed Hand Line
- M Completed Mixed Construction Line
- R Completed Road as Line
- M Planned Mixed Construction Line
- R Planned Road as Line
- ▬ Fire Edge
- - - Trail
- - - National Designated Trail
- ⋯ Closed FS Road

## Div A

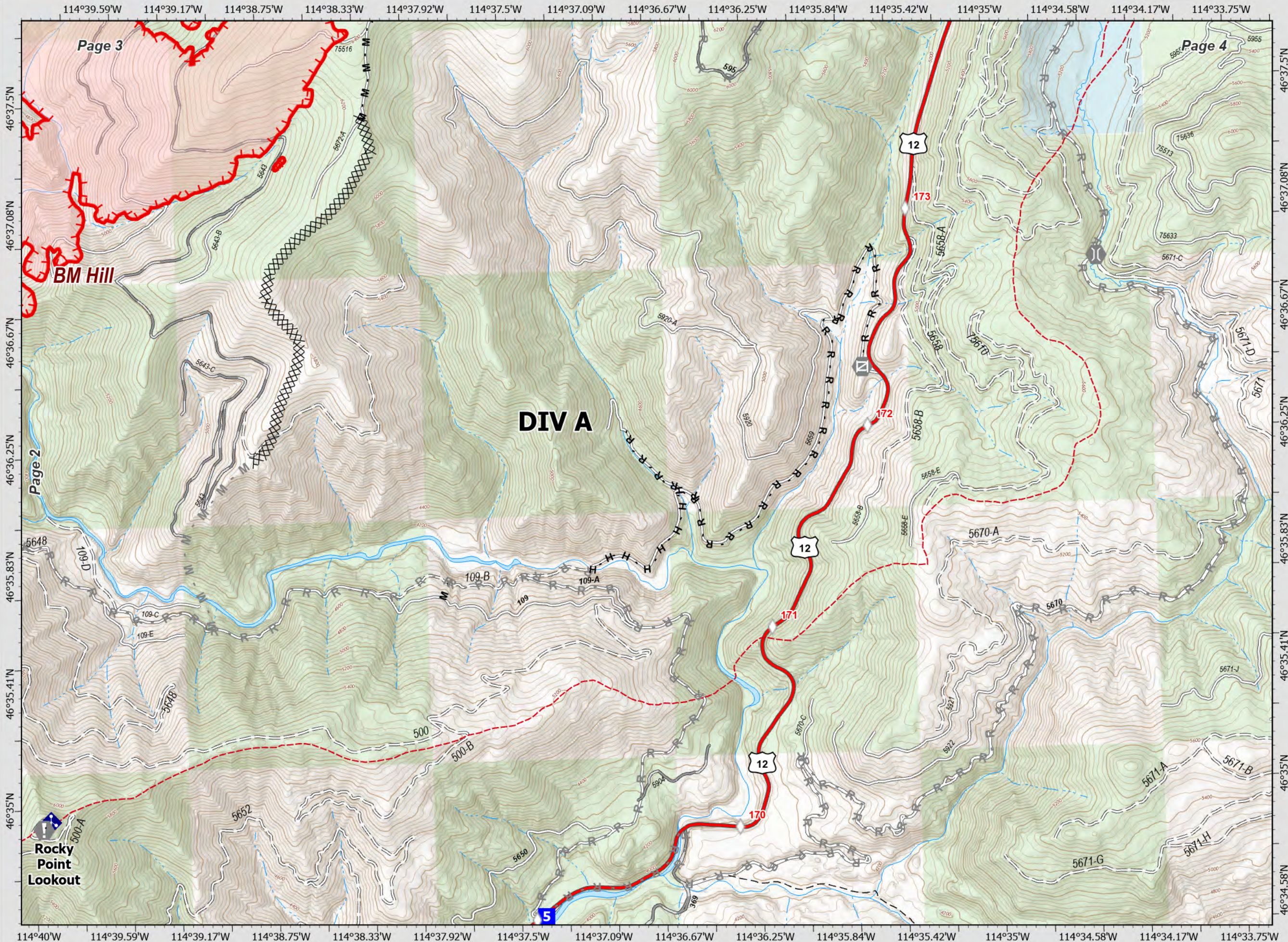
Page 1 of 8



0 0.25 0.5 Miles

Datum: North American 1983



NR IMT1 GISS Updated: 8/5/2021 1326



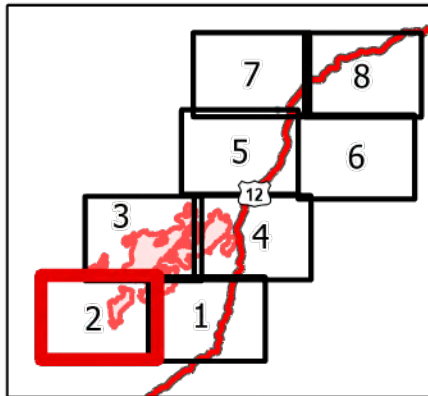
# Granite Pass Complex

MT-LNF-000962  
8/6/21

5,739 acres  
IR updated 8/5/21 @ 01:30

-  Wildfire Daily Fire Perimeter
-  Value at Risk
-  Mobile Weather Unit
-  Planned Mixed Construction Line
-  Planned Road as Line
-  Fire Edge
-  Trail
-  National Designated Trail
-  Closed FS Road

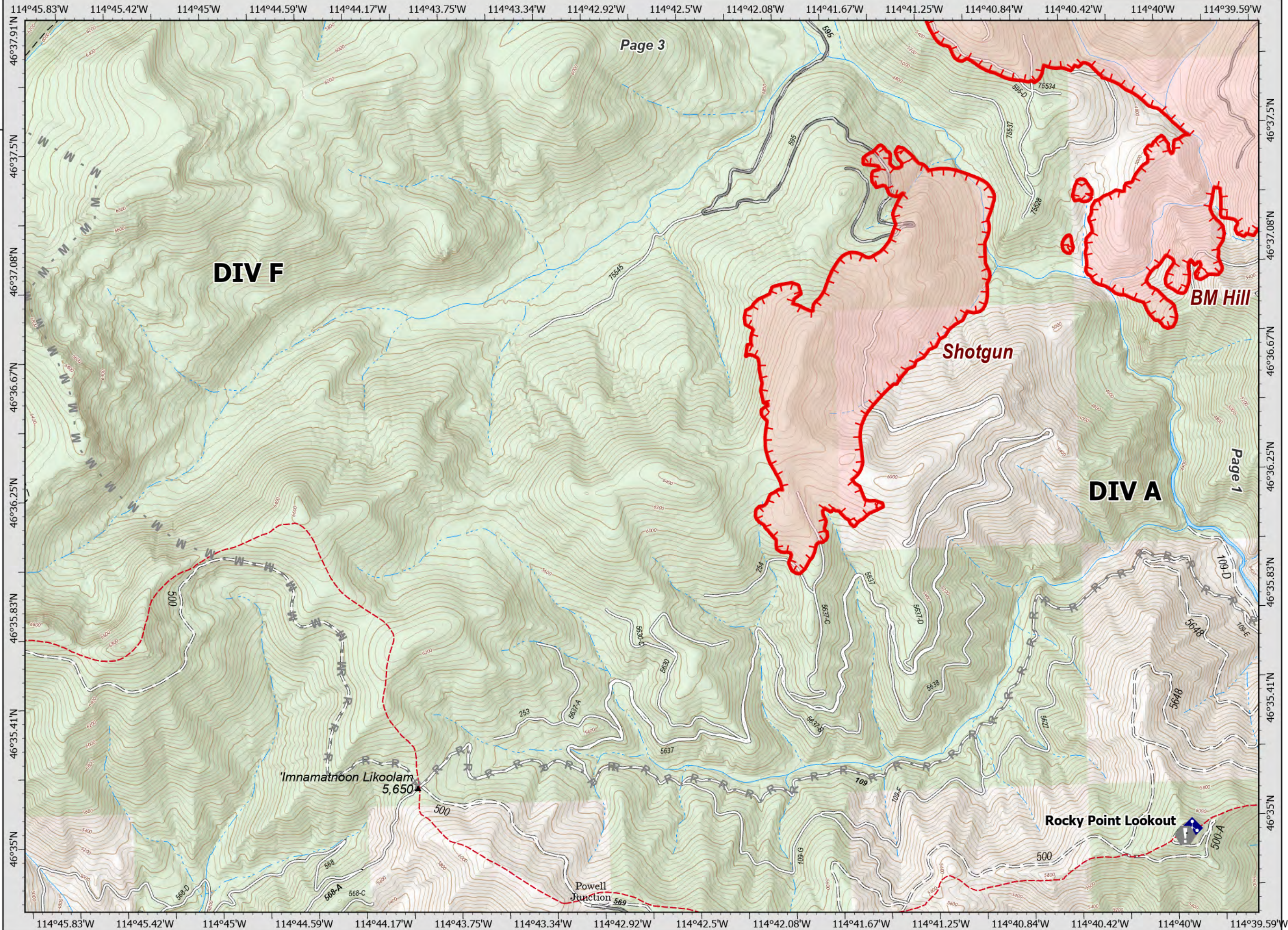
## DIV A & F Page 2 of 8



0 0.25 0.5 Miles

Datum: North American 1983


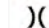


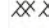





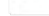
NR IMT1 GISS Updated: 8/5/2021 1326



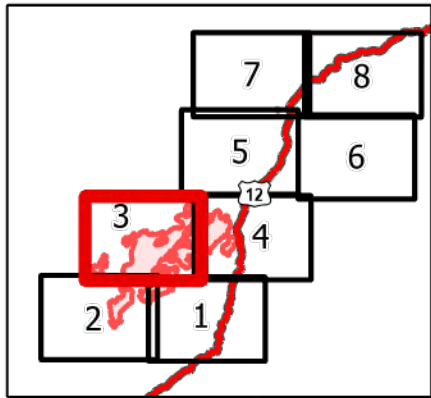
# Granite Pass Complex

MT-LNF-000962  
8/6/21

5,739 acres  
IR updated 8/5/21 @ 01:30

-  Wildfire Daily Fire Perimeter
-  Division Break
-  Drop Point
-  Value at Risk
-  Completed Dozer Line
-  Completed Mixed Construction Line
-  Planned Road as Line
-  Access or Improved Road
-  Fire Edge
-  Trail
-  Closed FS Road

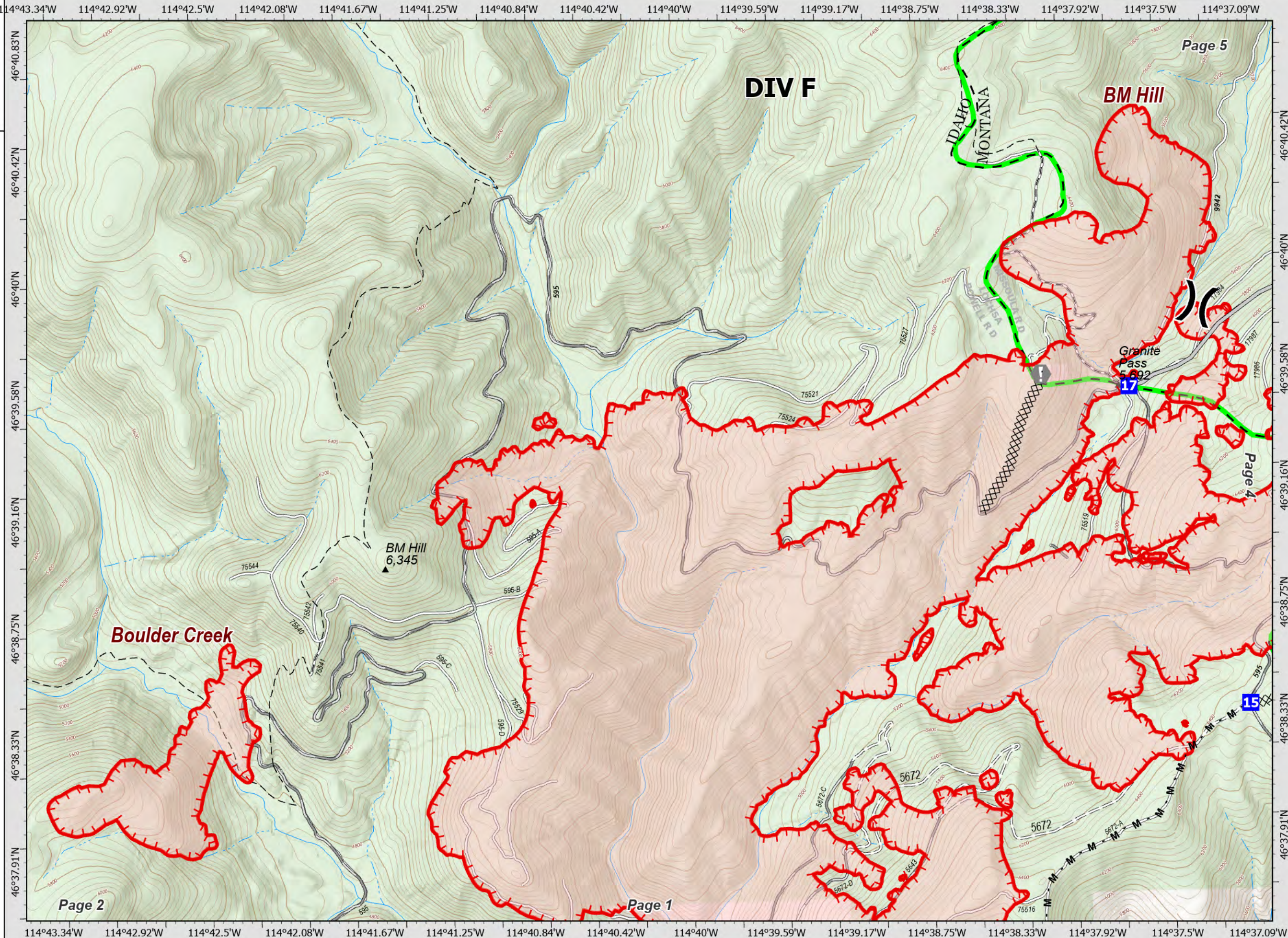
## DIV F Page 3 of 8



0 0.25 0.5 Miles

Datum: North American 1983

NR IMT1 GISS Updated: 8/5/2021 1327



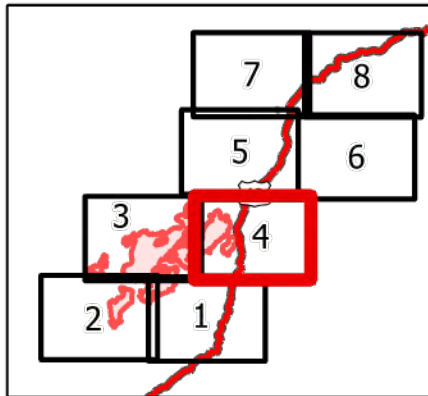
## Granite Pass Complex

MT-LNF-000962  
8/6/21

5,739 acres  
IR updated 8/5/21 @ 01:30

- Wildfire Daily Fire Perimeter
- Dip Site
- Hellspot
- Division Break
- Drop Point
- Lookout
- Value at Risk
- Landmark
- Gate
- Bridge
- Stream Crossing
- Culvert
- Mobile Weather Unit
- Internet Access
- Water Source
- MileMarkers
- Completed Dozer Line
- Completed Hand Line

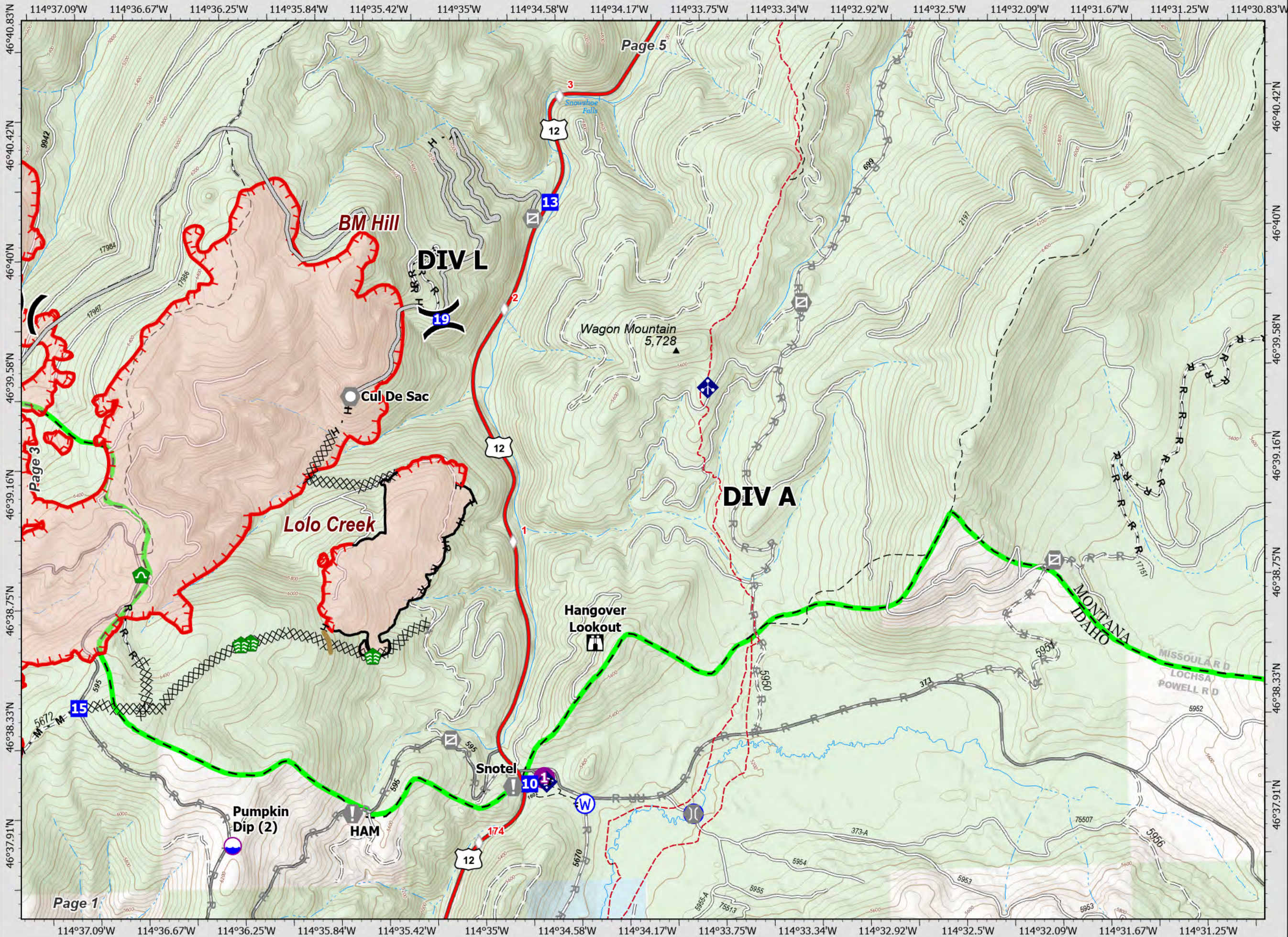
### DIV A&L Page 4 of 8



0 0.25 0.5 Miles

Datum: North American 1983

NR IMT1 GISS Updated: 8/5/2021 1327



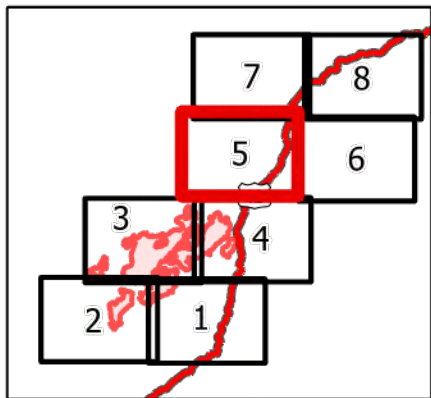
## Granite Pass Complex

MT-LNF-000962  
8/6/21

5,739 acres  
IR updated 8/5/21 @ 01:30

- Dip Site
- Drop Point
- Lookout
- Value at Risk
- Gate
- Bridge
- Water Development or Draft Site
- Repair Point
- Landing or Log Deck
- Culvert
- MileMarker
- Completed Dozer Line
- Completed Fuel Break
- Completed Hand Line
- Completed Mixed Construction Line
- Completed Road as Line
- Planned Fuel Break
- Planned Mixed Construction Line
- Planned Road as Line
- Trail

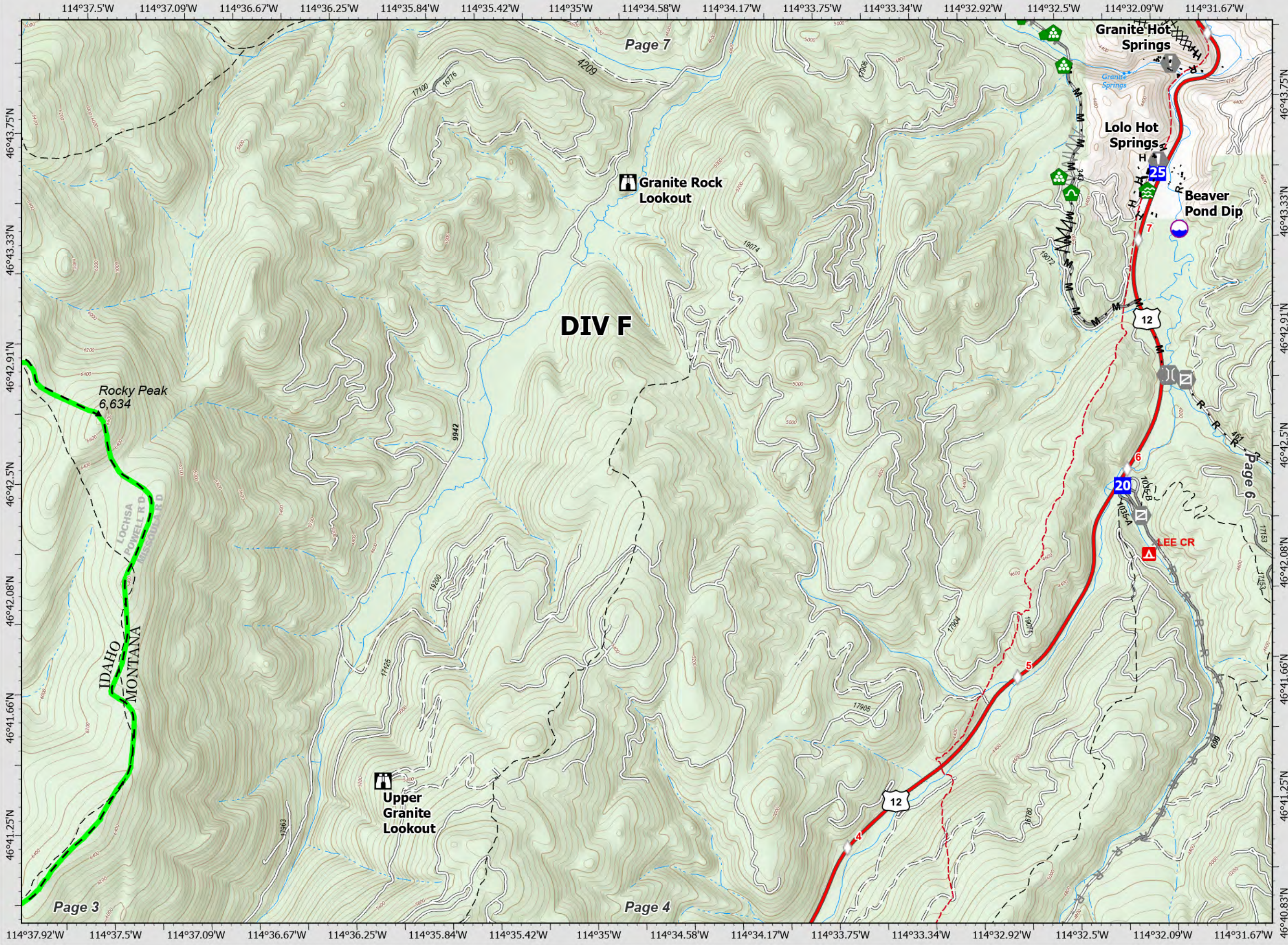
### DIV F Page 5 of 8



0 0.25 0.5 Miles

Datum: North American 1983

NR IMT1 GISS Updated: 8/5/2021 1327



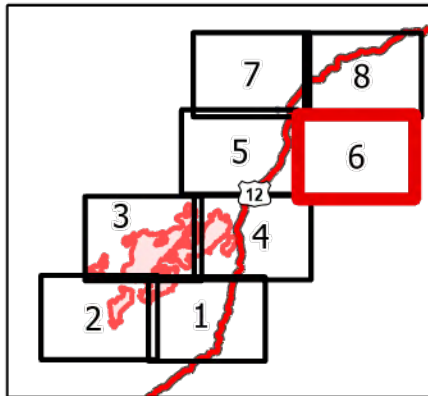
# Granite Pass Complex

MT-LNF-000962  
8/6/21

5,739 acres  
IR updated 8/5/21 @ 01:30

- Drop Point
- ◆ Repeater
- R - Completed Road as Line
- - - Trail
- ..... Closed FS Road

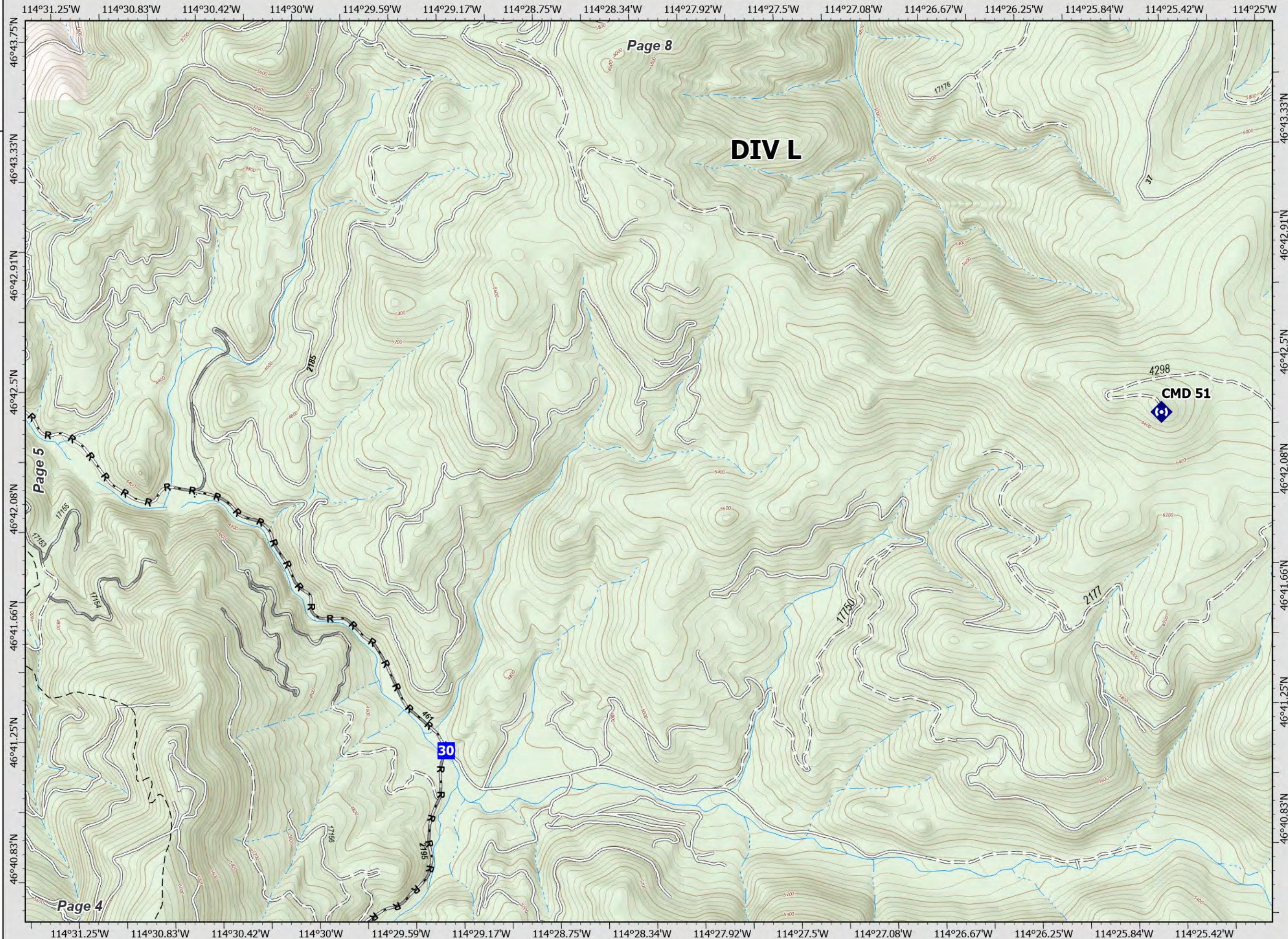
## DIV L Page 6 of 8



0 0.25 0.5 Miles

Datum: North American 1983

NR IMT1 GISS Updated: 8/5/2021 1328



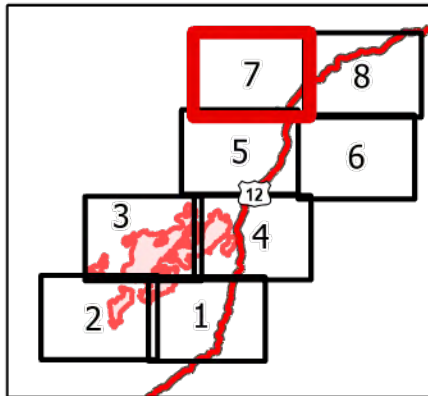
## Granite Pass Complex

MT-LNF-000962  
8/6/21

5,739 acres  
IR updated 8/5/21 @ 01:30

- Value at Risk
- Landmark
- Repair Point
- Landing or Log Deck
- Repeater
- MileMarkers
- Completed Dozer Line
- Completed Hand Line
- Completed Mixed Construction Line
- Completed Road as Line
- Planned Mixed Construction Line
- Trail
- National Designated Trail
- Closed FS Road

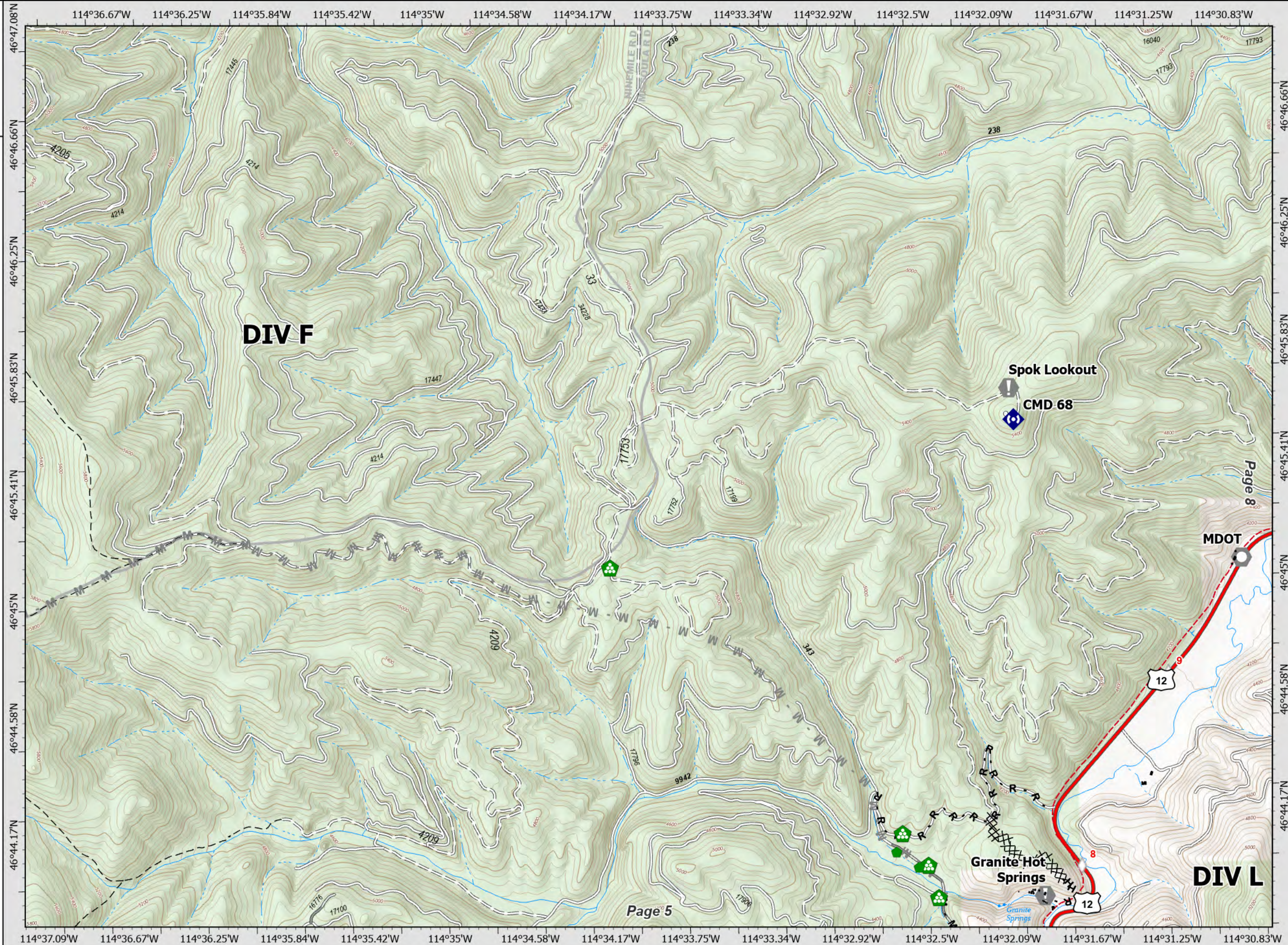
### DIV L Page 7 of 8



0 0.25 0.5 Miles

Datum: North American 1983

NR IMT1 GISS Updated: 8/5/2021 1328





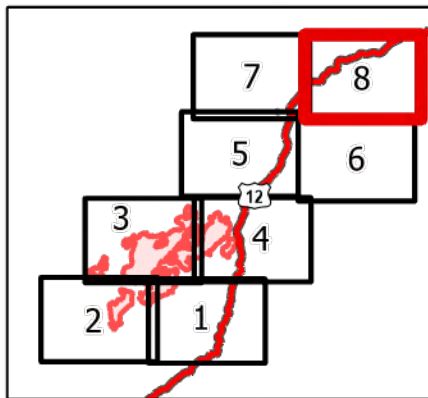
## Granite Pass Complex

MT-LNF-000962  
8/6/21

5,739 acres  
IR updated 8/5/21 @ 01:30

- Drop Point
- Value at Risk
- Landmark
- Landing or Log Deck
- ◆ Repeater
- ◇ MileMarkers
- Trail
- National Designated Trail
- Closed FS Road

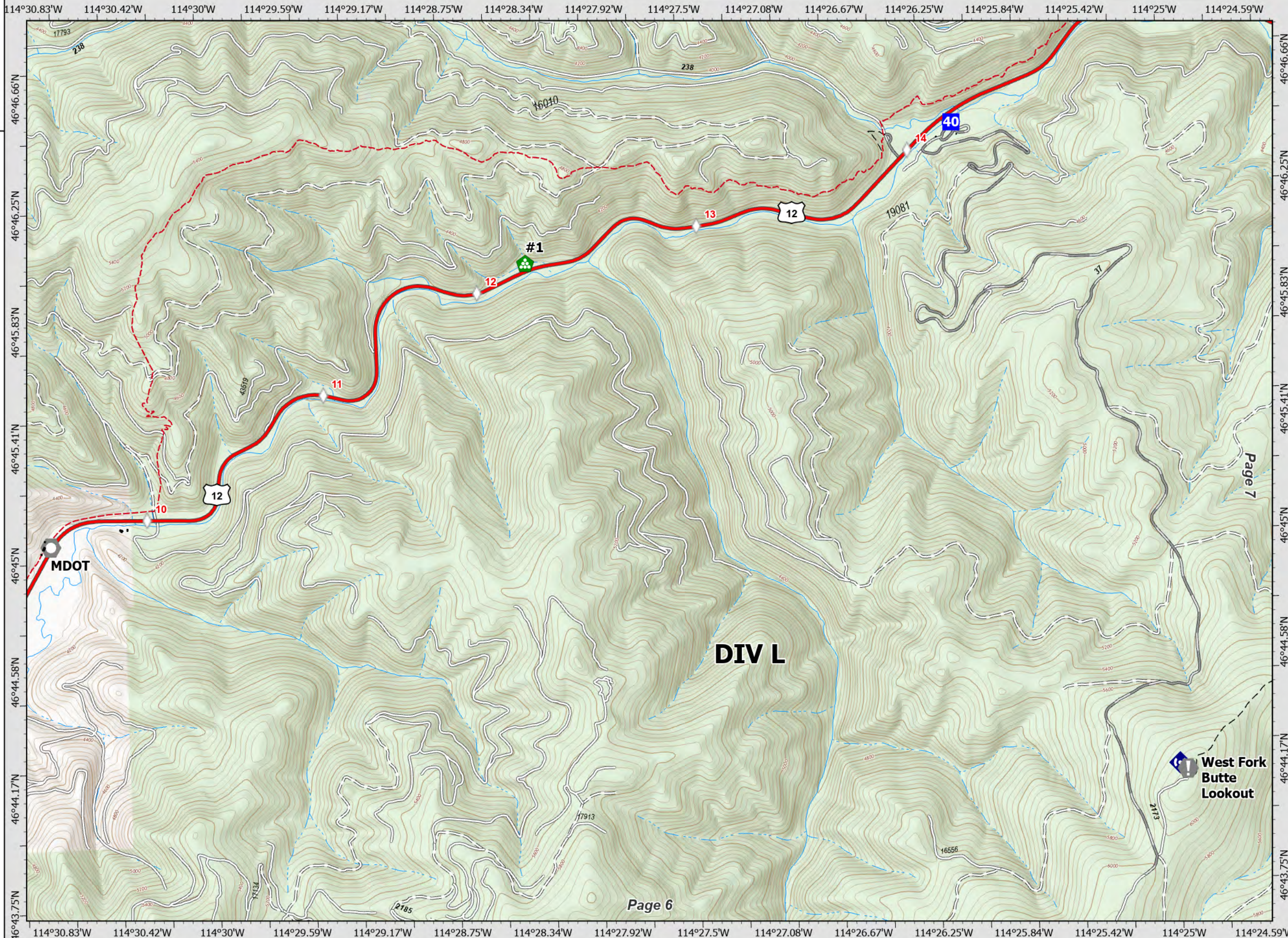
### DIV L Page 8 of 8



0 0.25 0.5 Miles

Datum: North American 1983

NR IMT1 GISS Updated: 8/5/2021 1329



Page 7

Page 6

West Fork Butte Lookout