

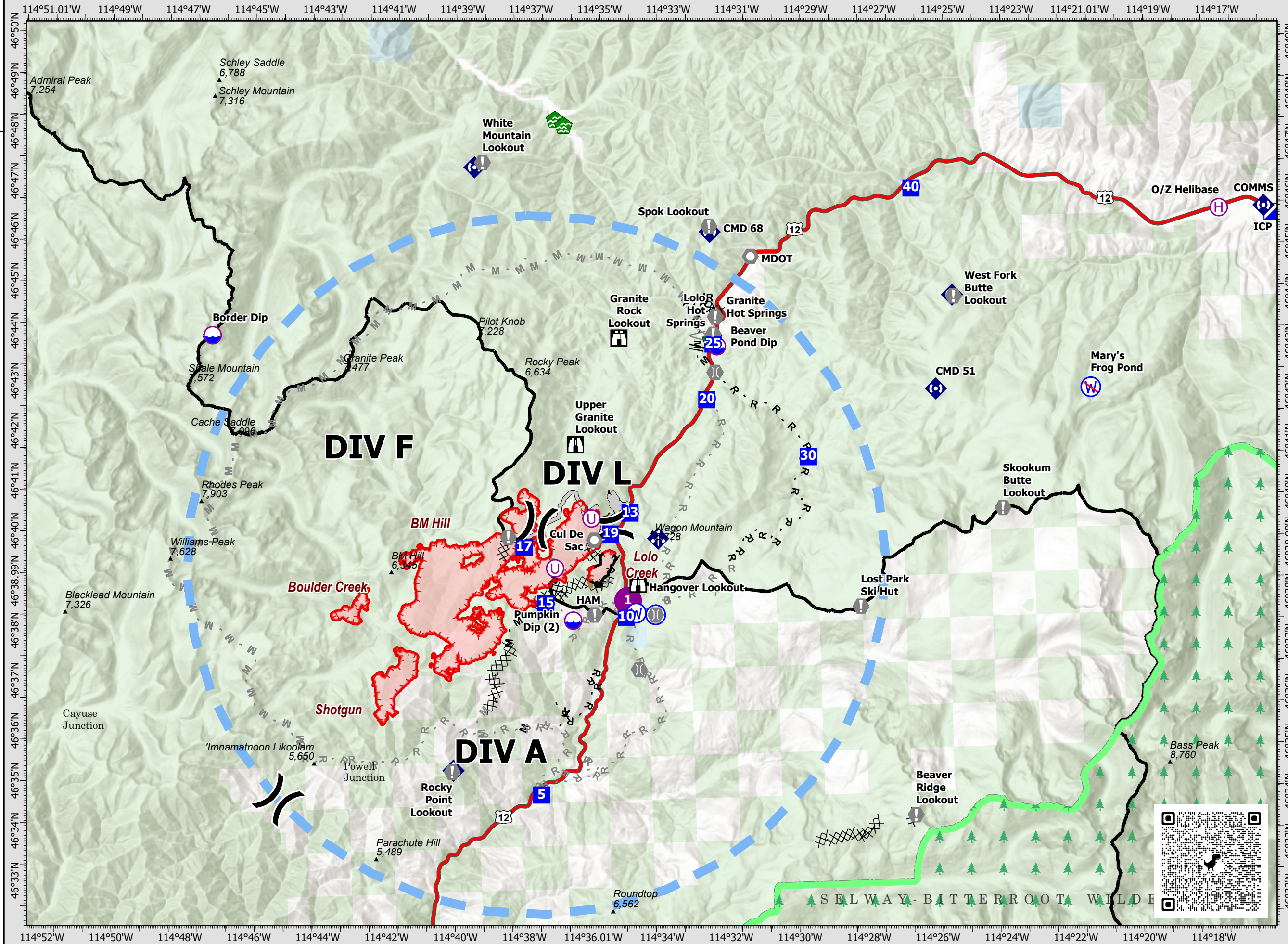
Granite Pass Complex

MT-LNF-000962

8/6/21

5,739 acres
IR updated 8/5/21 @ 01:30

- Dip Site
- Helispot
- Helibase
- Unimproved Landing Area
- Division Break
- Incident Command Post
- Drop Point
- Lookout
- Value at Risk
- Landmark
- Bridge
- Water Development or Draft Site
- Mobile Weather Unit
- Repeater
- Water Source
- Restricted Water Source
- Completed Dozer Line
- Completed Fuel Break
- Completed Hand Line
- Completed Mixed Construction Line
- Completed Road as Line
- Planned Fuel Break
- Planned Hand Line
- Planned Mixed Construction Line
- Planned Road as Line
- Access or Improved Road
- Repair Line
- Temporary Flight Restriction
- Fire Edge
- Contained Line
- Wildfire Daily Fire Perimeter
- FS Wilderness Boundary



Miles

Datum: North American 1983





Point Type	Point Name	Comments	Latitude	Longitude
Dip Site	Beaver Pond Dip		46° 43.284' N	114° 31.884' W
Dip Site	Border Dip		46° 43.807' N	114° 46.559' W
Dip Site	Pumpkin Dip (2)	6,000 gal Pumpkin Dips, Type I Heli	46° 37.885' N	114° 36.309' W
Drop Point	10	Lolo Pass Visitor Center	46° 38.075' N	114° 34.755' W
Drop Point	13		46° 40.110' N	114° 34.341' W
Drop Point	15	LOGS	46° 38.394' N	114° 37.086' W
Drop Point	17		46° 39.540' N	114° 37.669' W
Drop Point	19		46° 39.748' N	114° 35.141' W
Drop Point	20	Lee Creek Campground	46° 42.375' N	114° 32.220' W
Drop Point	25	Lolo Hotsprings	46° 43.487' N	114° 31.988' W
Drop Point	30	Make new DP here 461 rd and 2195 rd	46° 41.174' N	114° 29.319' W
Drop Point	30		46° 41.174' N	114° 29.319' W
Drop Point	40	Earl Tenant	46° 46.481' N	114° 26.077' W
Drop Point	5		46° 34.570' N	114° 37.376' W
Helibase	O/Z Helibase		46° 45.736' N	114° 17.134' W
Helispot	1	Lolo Center Parking Lot	46° 38.117' N	114° 34.717' W
Incident Command Post	ICP		46° 45.610' N	114° 15.586' W
Lookout	Granite Rock Lookout		46° 43.509' N	114° 34.731' W
Lookout	Hangover Lookout	Good vantage point for Lolo Creek Fire and BM Hill Fire	46° 38.574' N	114° 34.392' W
Lookout	Upper Granite Lookout		46° 41.404' N	114° 36.093' W
Unimproved Landing Area			46° 39.916' N	114° 35.690' W
Unimproved Landing Area			46° 38.941' N	114° 36.792' W
Value at Risk		"Judge's Cabin" sprinkler set up with water tank	46° 39.591' N	114° 38.125' W
Value at Risk	Beaver Ridge Lookout		46° 33.790' N	114° 26.522' W
Value at Risk	Granite Hot Springs		46° 43.875' N	114° 31.903' W
Value at Risk	HAM	HAM Radio site, wrapped	46° 37.989' N	114° 35.682' W
Value at Risk	Lolo Hot Springs		46° 43.528' N	114° 31.982' W
Value at Risk	Lost Park Ski Hut		46° 37.995' N	114° 27.932' W
Value at Risk	Rocky Point Lookout		46° 34.937' N	114° 39.944' W
Value at Risk	Skookum Butte Lookout		46° 39.879' N	114° 23.708' W
Value at Risk	Snotel	Wrapped	46° 38.068' N	114° 34.840' W
Value at Risk	Spok Lookout		46° 45.692' N	114° 32.011' W
Value at Risk	West Fork Butte Lookout	Call Lolo NF recreation for info.	46° 44.145' N	114° 24.952' W
Value at Risk	White Mountain Lookout		46° 47.062' N	114° 38.597' W

