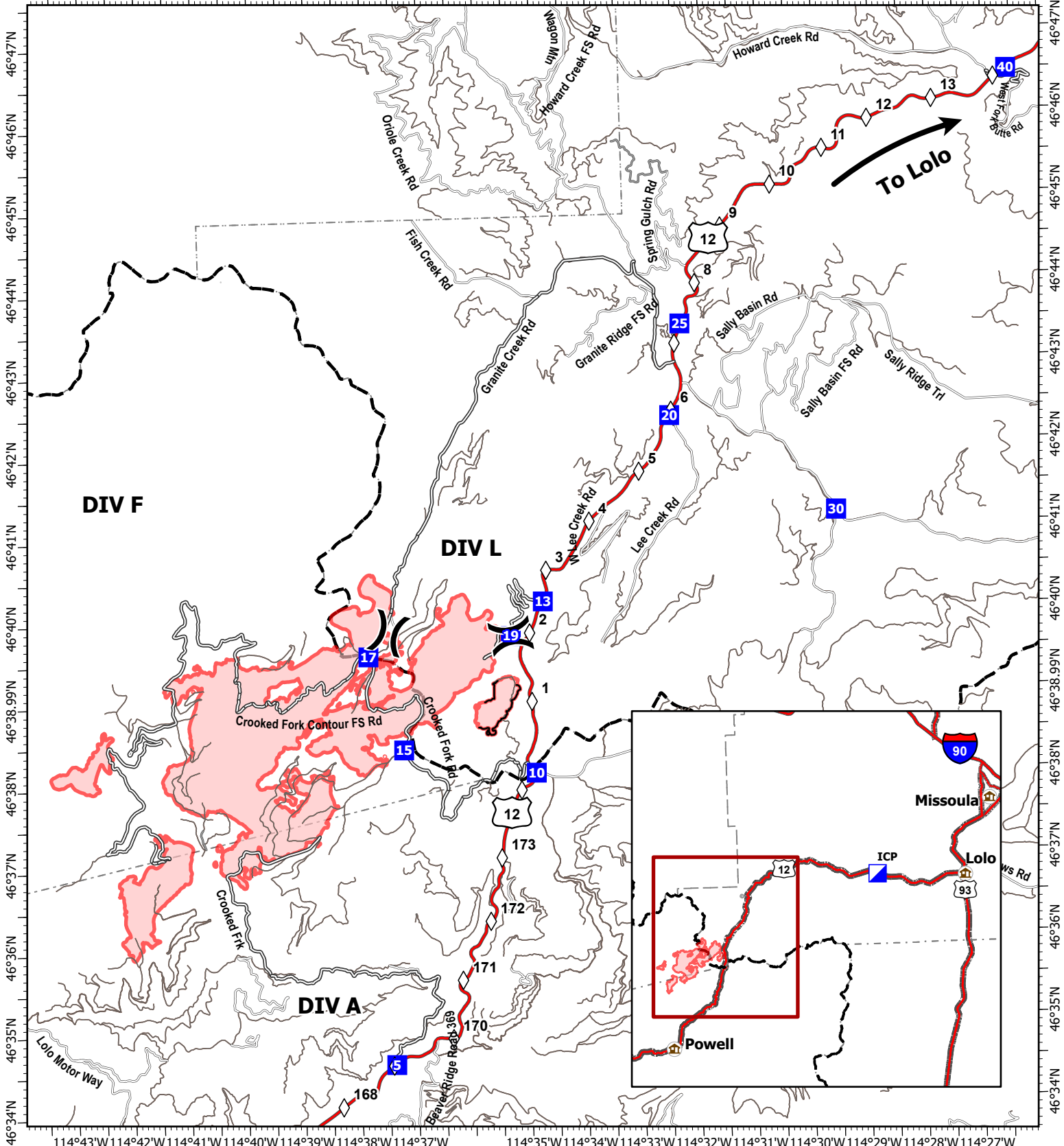


114°43'W 114°42'W 114°41'W 114°40'W 114°39'W 114°38'W 114°37'W 114°35'W 114°34'W 114°33'W 114°32'W 114°31'W 114°30'W 114°29'W 114°28'W 114°27'W 114°26'W



Granite Pass Complex
 MT-LNF-000962
 8/6/21
 5,739 acres
 IR updated 8/5/21 @ 01:30

- ◇ Mile Markers
- ⌵ Division Break
- Drop Point
- Contained Line
- Primary Highway
- Paved Roads
- Dirt (Not Paved)
- ⌵ State Boundary
- State Boundary
- ⌵ County Boundary
- ▭ Wildfire Daily Fire Perimeter



Datum: North American 1983