

IAP

Granite Pass Complex

MT-LNF-000962

8/7/21

5,739 acres

IR updated 8/5/21 @ 01:30

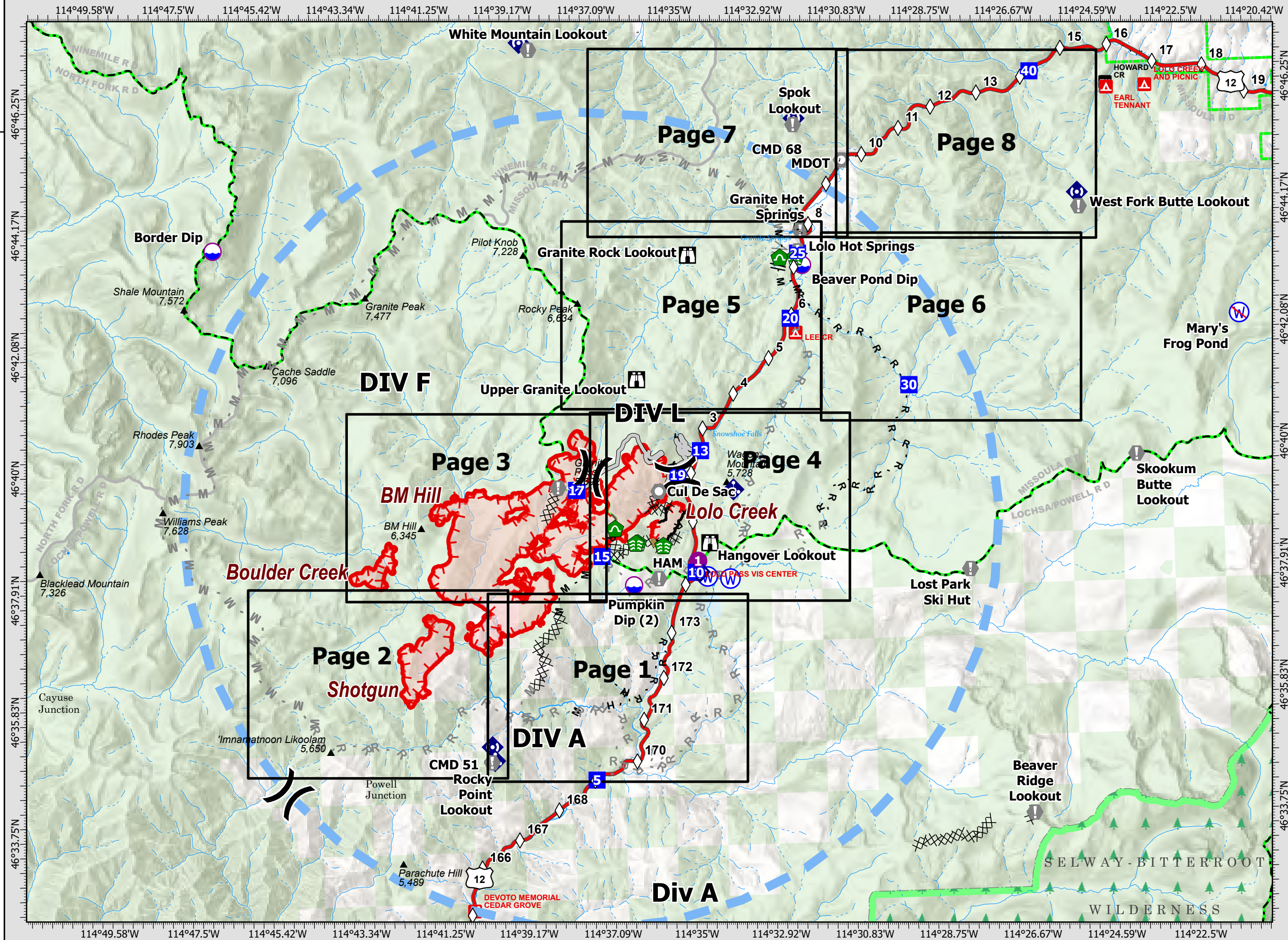
- Dip Site
- Helispot
- Division Break
- Drop Point
- Lookout
- Value at Risk
- Landmark
- Water Development or Draft Site
- Stream Crossing
- Culvert
- Mobile Weather Unit
- Internet Access
- Repeater
- Water Source
- Restricted Water Source
- Completed Dozer Line
- Completed Fuel Break
- Completed Hand Line
- Completed Mixed Construction Line
- Completed Road as Line
- Planned Fuel Break
- Planned Hand Line
- Planned Mixed Construction Line
- Planned Road as Line
- Access or Improved Road
- Repair Line
- Temporary Flight Restriction
- Fire Edge
- Contained Line
- Wildfire Daily Fire Perimeter
- Building Footprint
- FS Wilderness Boundary
- IAP Grid Index
- Mile Markers



0 0.5 1 2 Miles

Datum: North American 1983

Updated: 8/6/2021 1919



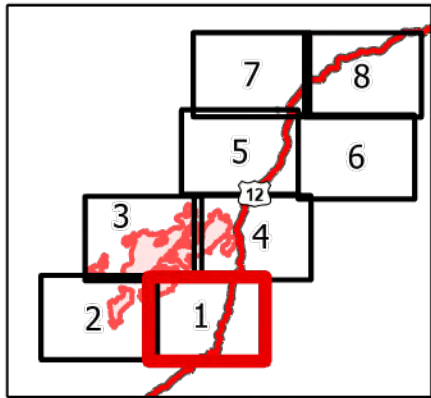
Granite Pass Complex

MT-LNF-000962
8/7/21

5,739 acres
IR updated 8/5/21 @ 01:30

- Wildfire Daily Fire Perimeter
- Drop Point
- Value at Risk
- Gate
- Bridge
- Mobile Weather Unit
- Repeater
- MileMarkers
- Completed Dozer Line
- Completed Hand Line
- Completed Mixed Construction Line
- Completed Road as Line
- Planned Mixed Construction Line
- Planned Road as Line
- Fire Edge
- Trail
- National Designated Trail
- Closed FS Road

Div A Page 1 of 8



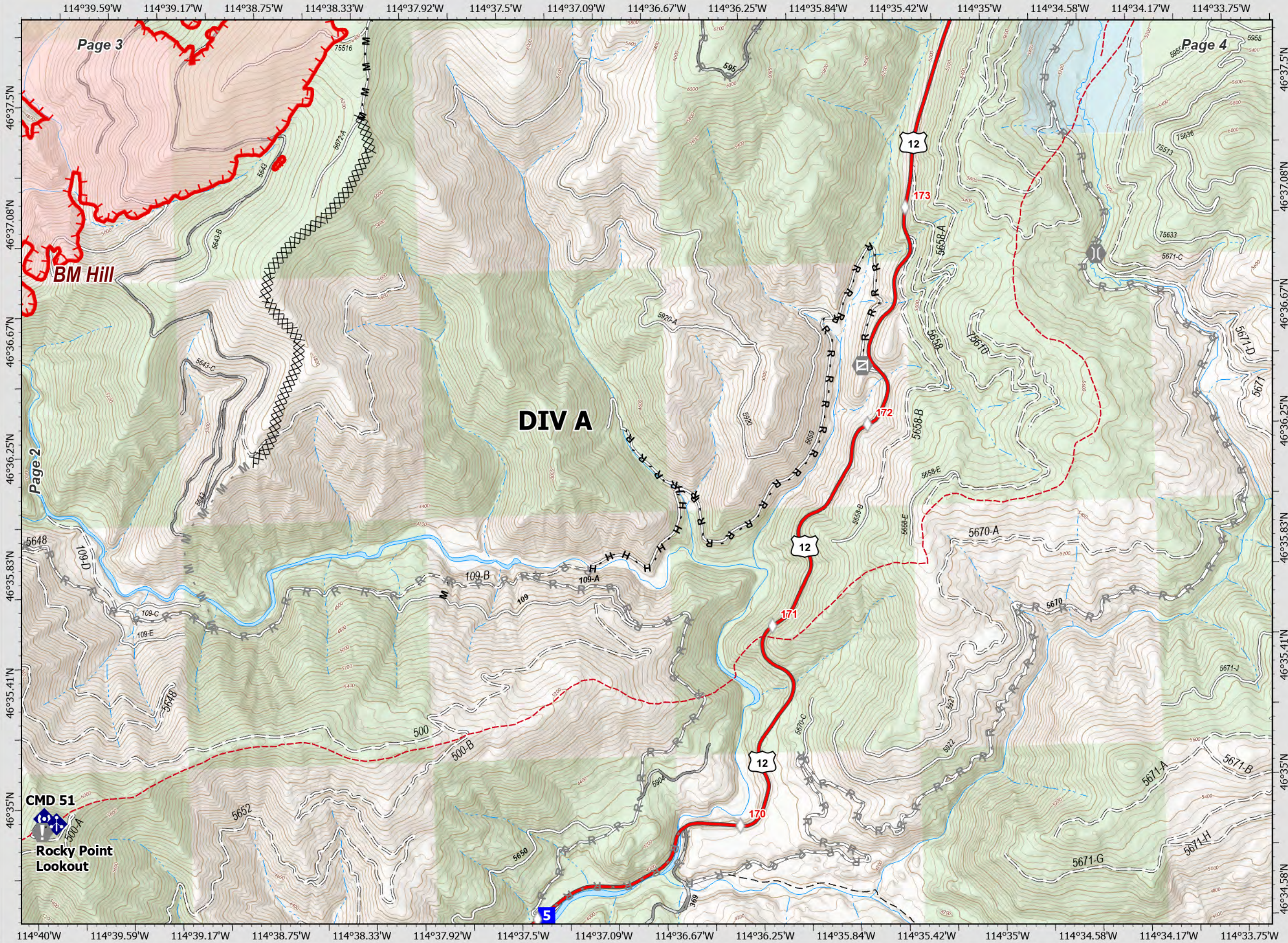
CMD 51
Rocky Point
Lookout



0 0.25 0.5 Miles

Datum: North American 1983






NR IMT1 GISS Updated: 8/6/2021 2027



Granite Pass Complex

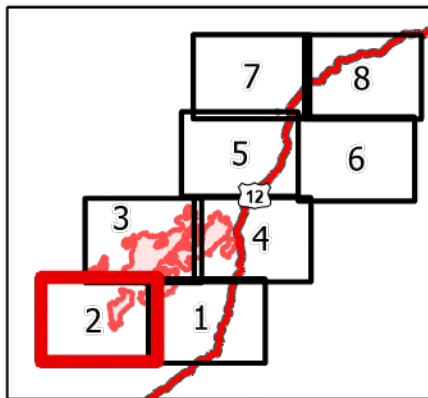
MT-LNF-000962
8/7/21

5,739 acres
IR updated 8/5/21 @ 01:30

-  Wildfire Daily Fire Perimeter
-  Value at Risk
-  Mobile Weather Unit
-  Repeater
-  Planned Mixed Construction Line
-  Planned Road as Line
-  Fire Edge
-  Trail
-  National Designated Trail
-  Closed FS Road

DIV A & F

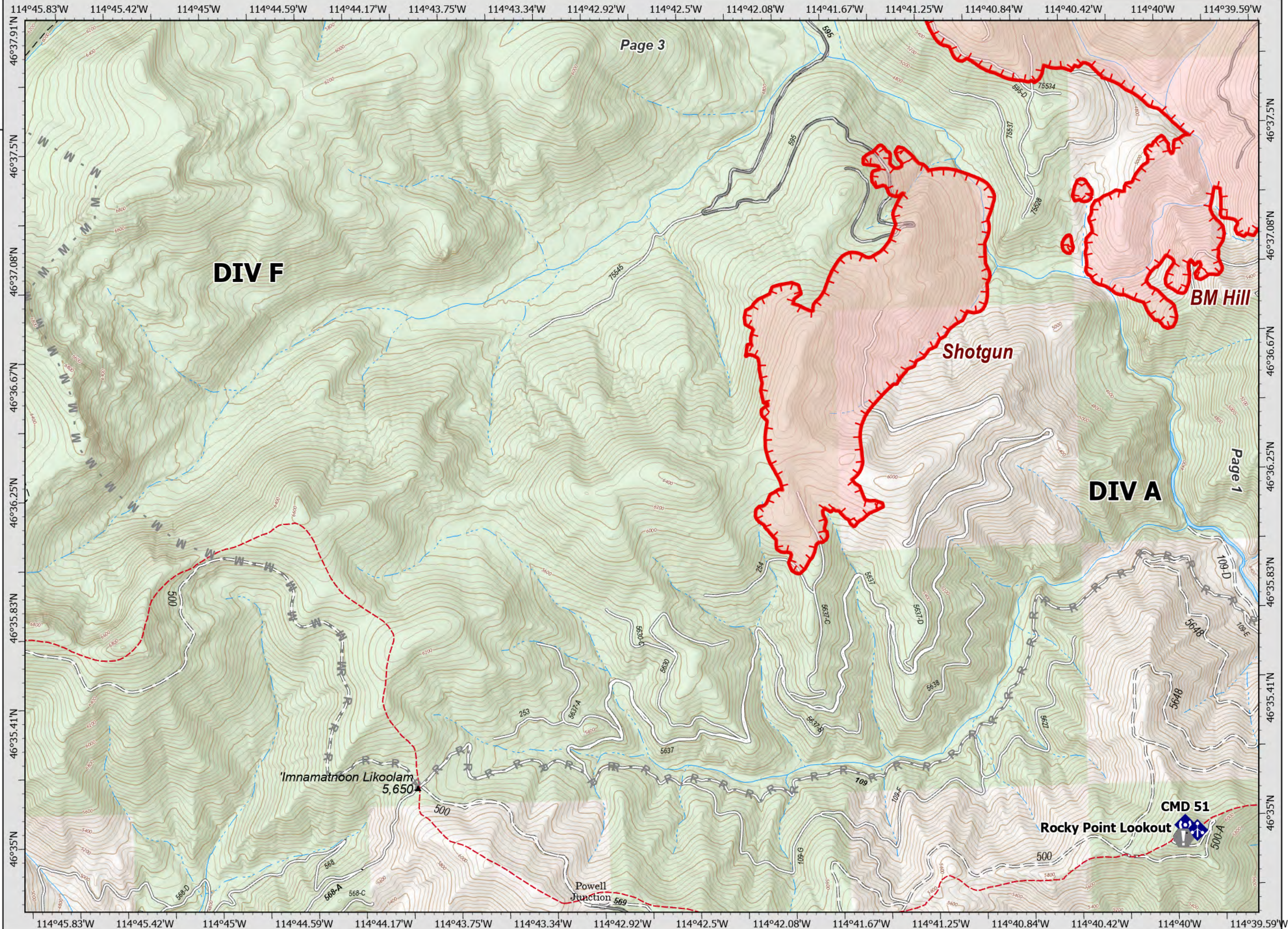
Page 2 of 8



0 0.25 0.5 Miles

Datum: North American 1983


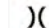


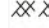






NR IMT1 GISS Updated: 8/6/2021 2027



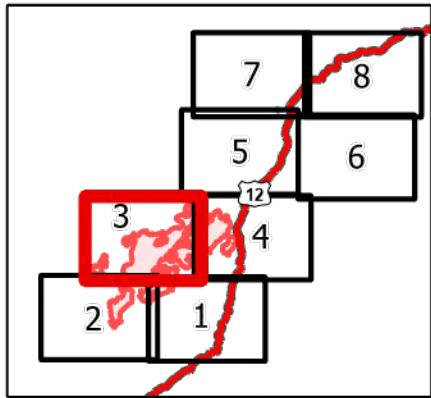
Granite Pass Complex

MT-LNF-000962
8/7/21

5,739 acres
IR updated 8/5/21 @ 01:30

-  Wildfire Daily Fire Perimeter
-  Division Break
-  Drop Point
-  Value at Risk
-  Completed Dozer Line
-  Completed Mixed Construction Line
-  Planned Road as Line
-  Access or Improved Road
-  Fire Edge
-  Trail
-  Closed FS Road

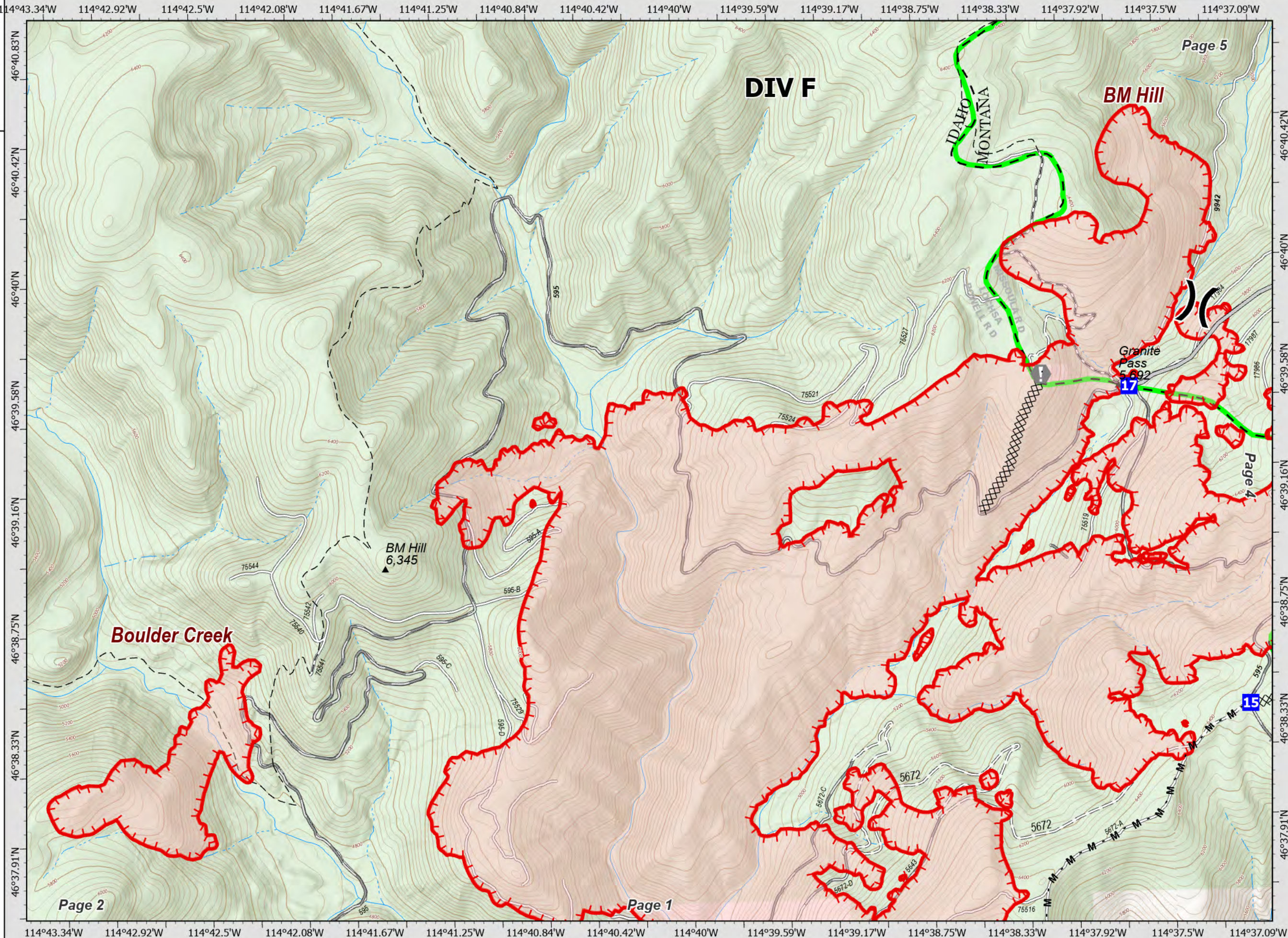
DIV F Page 3 of 8



0 0.25 0.5 Miles

Datum: North American 1983

NR IMT1 GISS Updated: 8/6/2021 2027



Granite Pass Complex

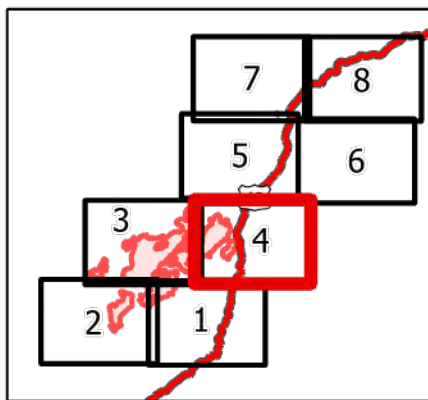
MT-LNF-000962
8/7/21

5,739 acres
IR updated 8/5/21 @ 01:30

- ▬ Wildfire Daily Fire Perimeter
- Dip Site
- Hellspot
- X Division Break
- Drop Point
- Lookout
- ⊕ Value at Risk
- Landmark
- ⊙ Gate
- ⊙ Bridge
- Stream Crossing
- Culvert
- ⬇ Mobile Weather Unit
- ⬇ Internet Access
- ⊕ Water Source
- ◇ MileMarkers
- X Completed Dozer Line
- H Completed Hand Line

DIV A&L

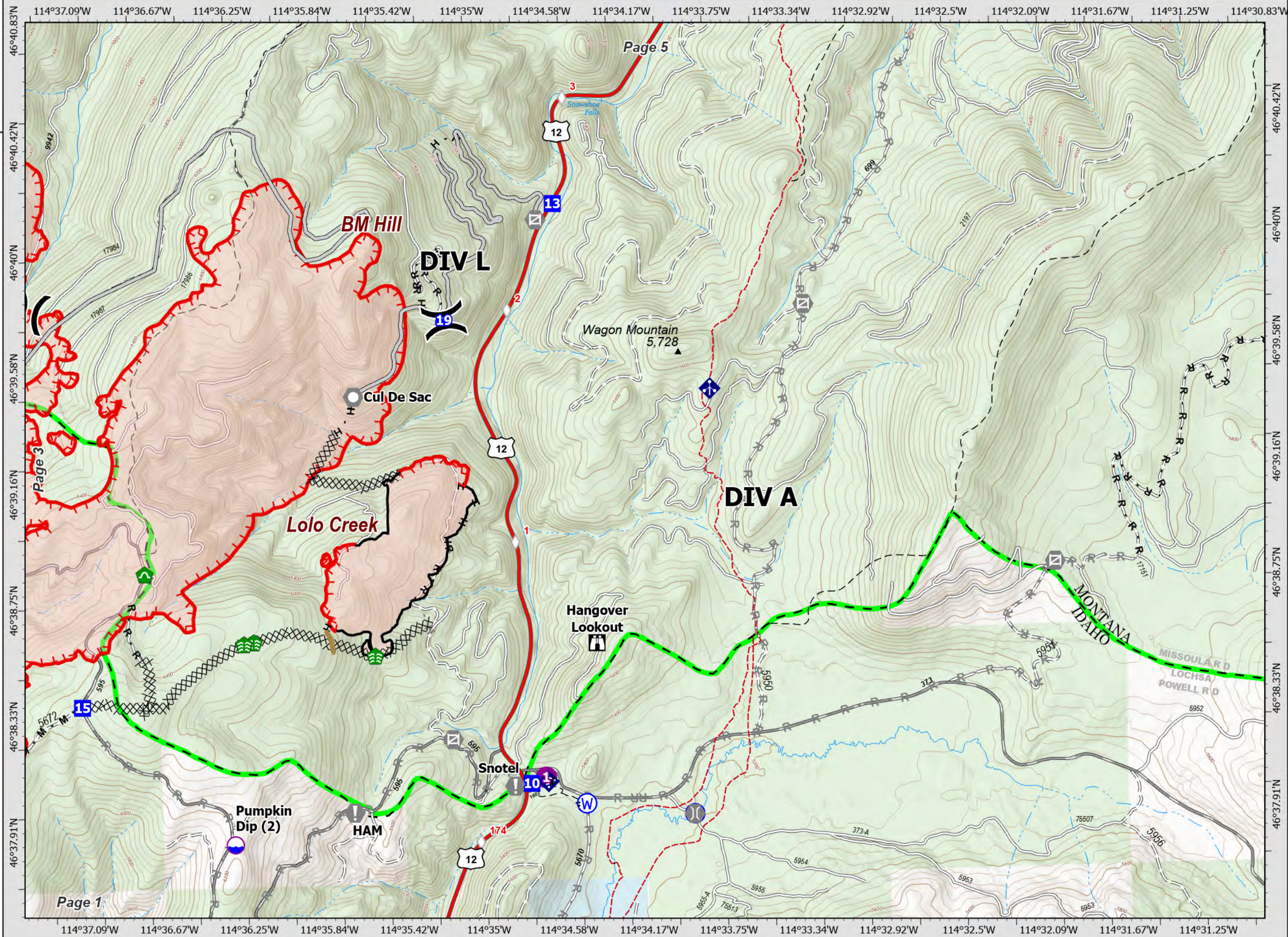
Page 4 of 8



0 0.25 0.5 Miles

Datum: North American 1983

NR IMT1 GISS Updated: 8/6/2021 2027



Page 1

Page 5

46°40.83'N
46°40.42'N
46°40'N
46°39.58'N
46°39.16'N
46°38.75'N
46°38.33'N
46°37.91'N

114°37.09'W
114°36.67'W
114°36.25'W
114°35.84'W
114°35.42'W
114°35'W
114°34.58'W
114°34.17'W
114°33.75'W
114°33.34'W
114°32.92'W
114°32.5'W
114°32.09'W
114°31.67'W
114°31.25'W
114°30.83'W

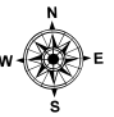
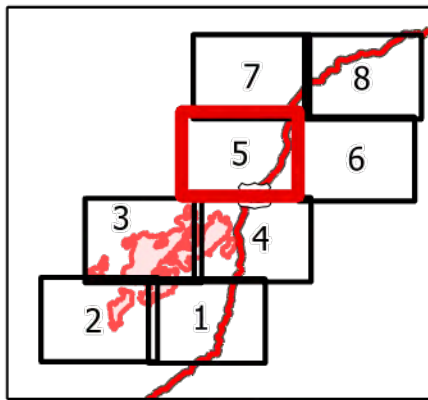
Granite Pass Complex

MT-LNF-000962
8/7/21

5,739 acres
IR updated 8/5/21 @ 01:30

- Dip Site
- Drop Point
- Lookout
- Value at Risk
- Gate
- Bridge
- Water Development or Draft Site
- Repair Point
- Landing or Log Deck
- Culvert
- MileMarker
- Completed Dozer Line
- Completed Fuel Break
- Completed Hand Line
- Completed Mixed Construction Line
- Completed Road as Line
- Planned Fuel Break
- Planned Mixed Construction Line
- Planned Road as Line
- Trail

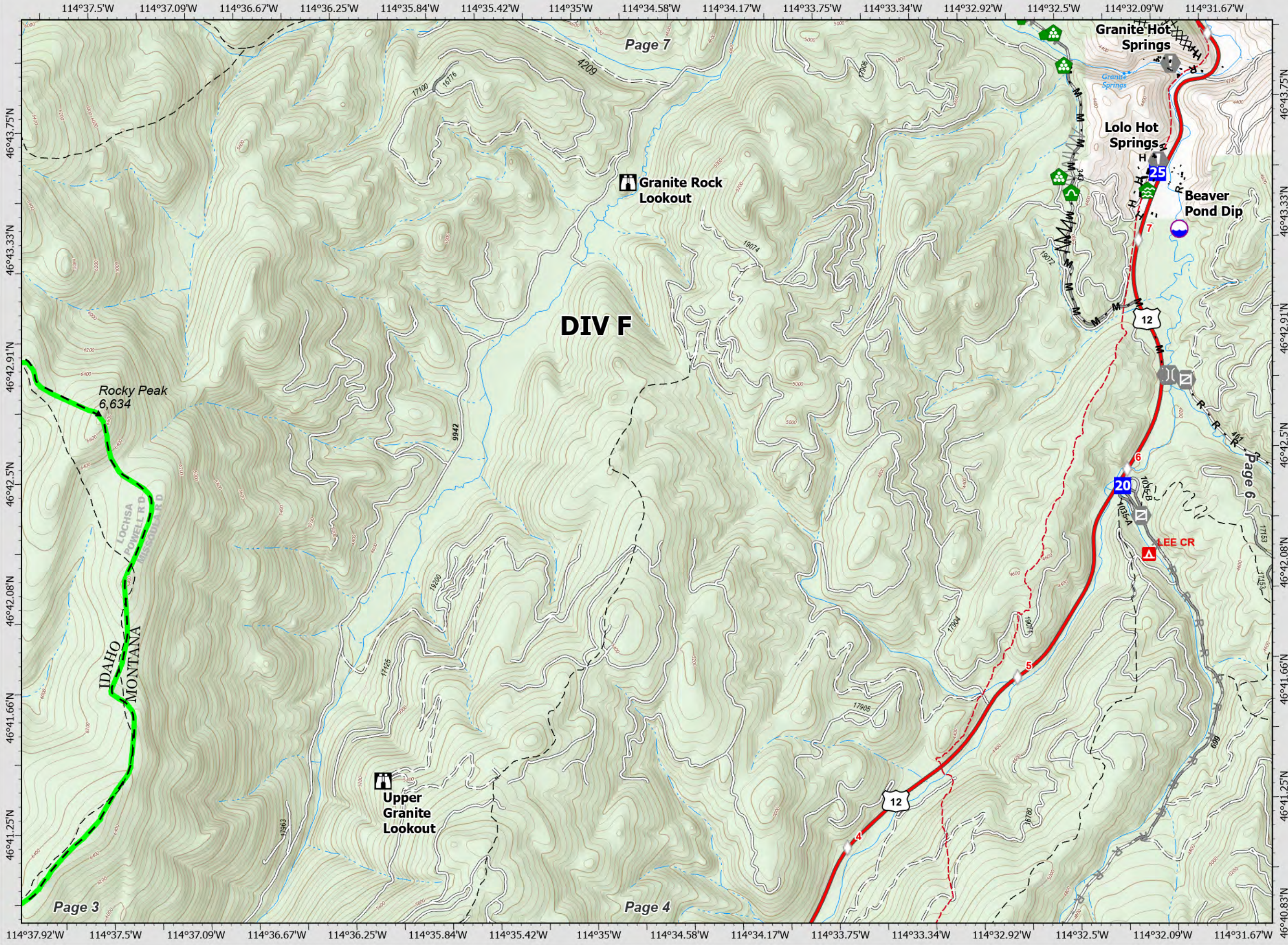
DIV F Page 5 of 8



0 0.25 0.5 Miles

Datum: North American 1983

NR IMT1 GISS Updated: 8/6/2021 2027



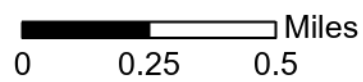
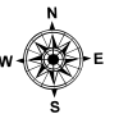
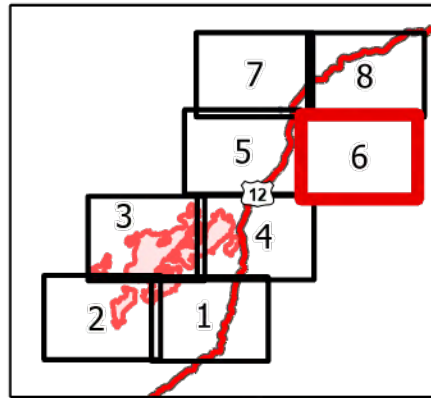
Granite Pass Complex

MT-LNF-000962
8/7/21

5,739 acres
IR updated 8/5/21 @ 01:30

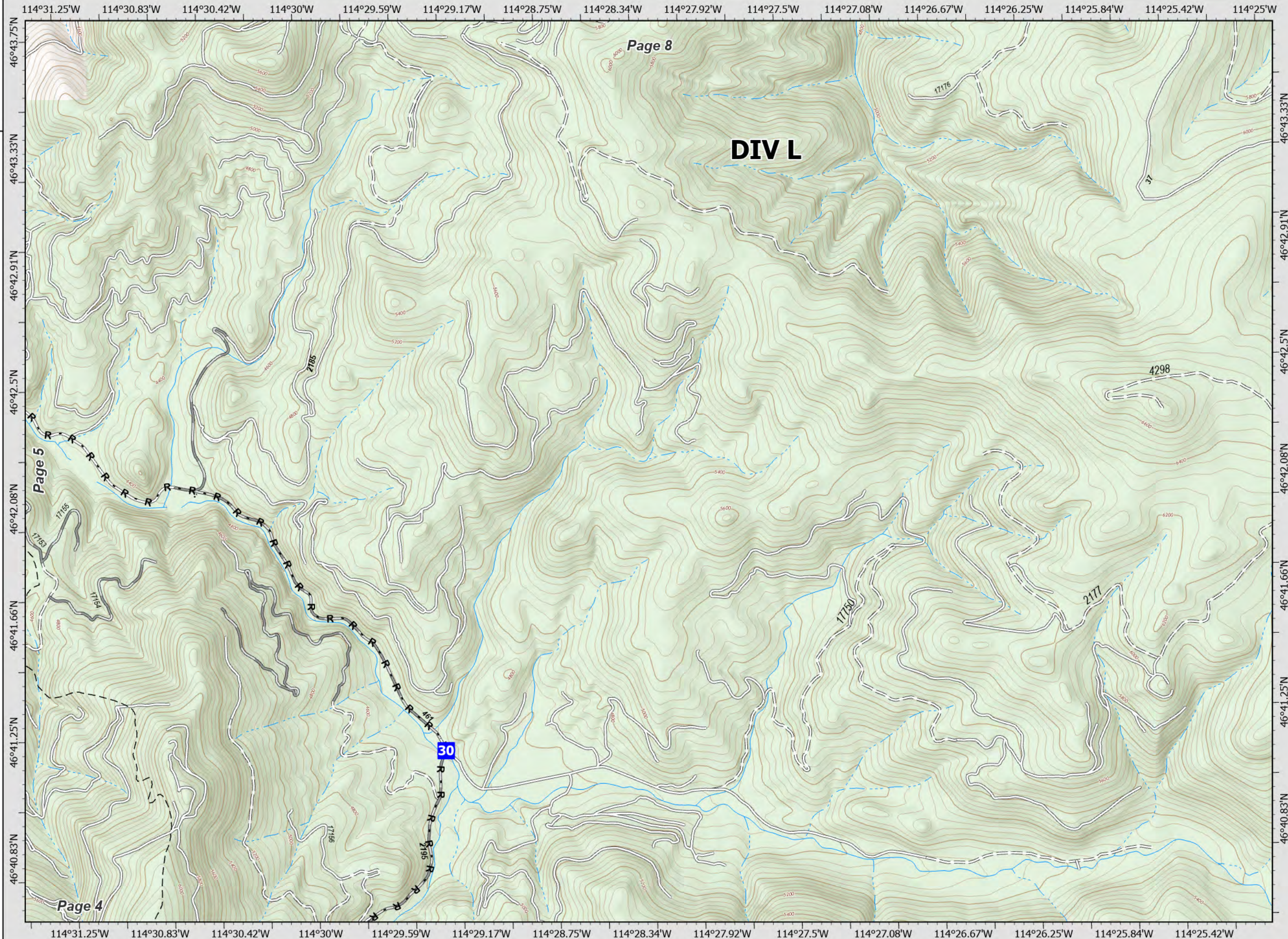
- Drop Point
- R - Completed Road as Line
- - - Trail
- Closed FS Road

DIV L Page 6 of 8



Datum: North American 1983

NR IMT1 GISS Updated: 8/6/2021 2027



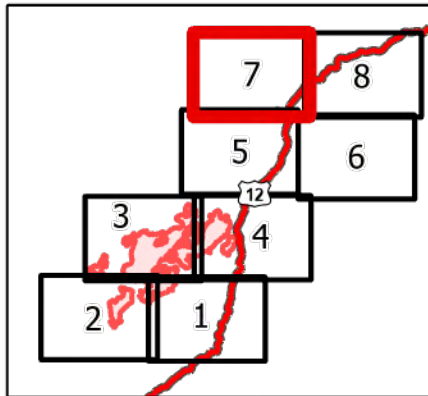
Granite Pass Complex

MT-LNF-000962
8/7/21

5,739 acres
IR updated 8/5/21 @ 01:30

- Value at Risk
- Landmark
- Repair Point
- Landing or Log Deck
- Repeater
- MileMarkers
- Completed Dozer Line
- Completed Hand Line
- Completed Mixed Construction Line
- Completed Road as Line
- Planned Mixed Construction Line
- Trail
- National Designated Trail
- Closed FS Road

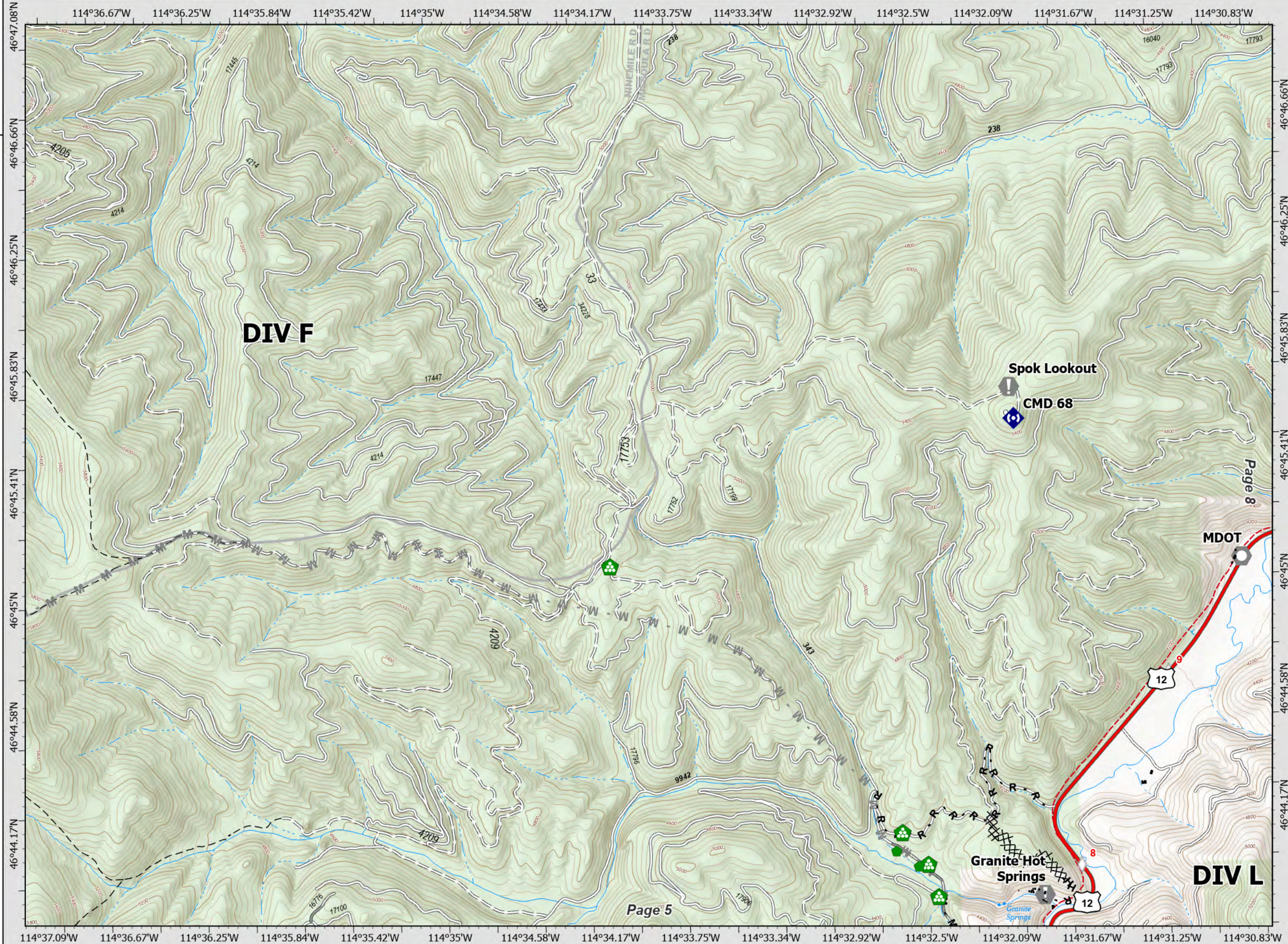
DIV L Page 7 of 8



0 0.25 0.5 Miles

Datum: North American 1983

NR IMT1 GISS Updated: 8/6/2021 2027



Page 8

DIV L

Page 5

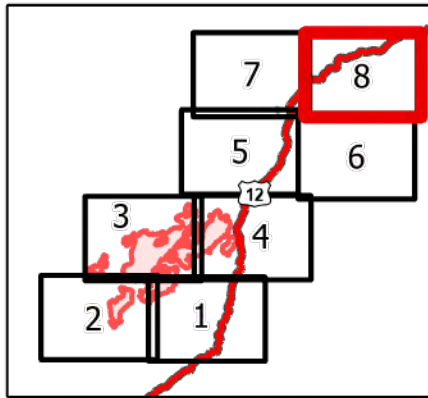
Granite Pass Complex

MT-LNF-000962
8/7/21

5,739 acres
IR updated 8/5/21 @ 01:30

- Drop Point
- Value at Risk
- Landmark
- Landing or Log Deck
- Repeater
- MileMarkers
- Trail
- National Designated Trail
- Closed FS Road

DIV L
Page 8 of 8



0 0.25 0.5 Miles

Datum: North American 1983

NR IMT1 GISS Updated: 8/6/2021 2027

