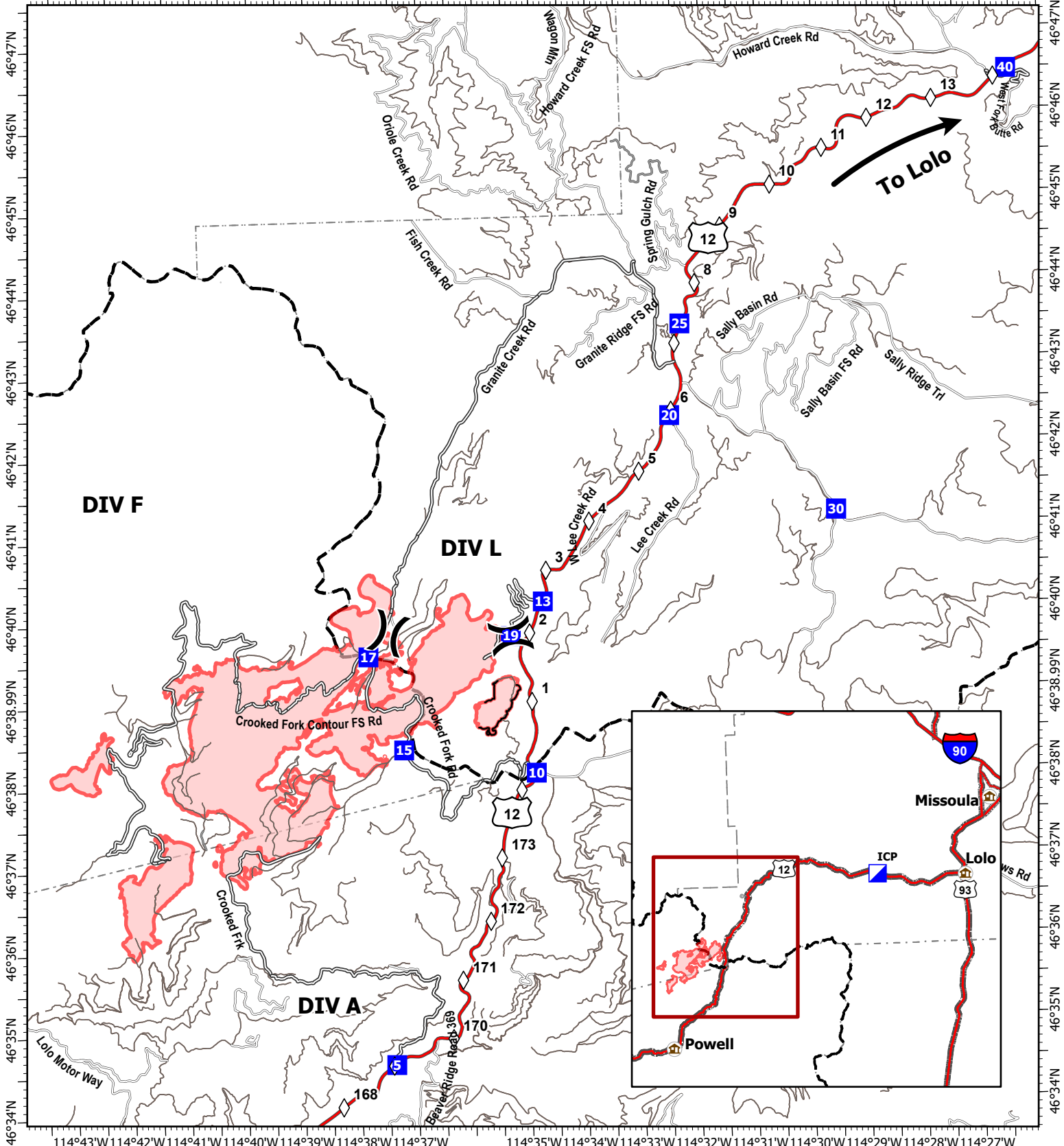


114°43'W 114°42'W 114°41'W 114°40'W 114°39'W 114°38'W 114°37'W 114°35'W 114°34'W 114°33'W 114°32'W 114°31'W 114°30'W 114°29'W 114°28'W 114°27'W 114°26'W



**Granite Pass Complex**  
 MT-LNF-000962  
 8/7/21  
 5,739 acres  
 IR updated 8/5/21 @ 01:30

- ◇ Mile Markers
- ⌘ Division Break
- Drop Point
- Contained Line
- Primary Highway
- Paved Roads
- Dirt (Not Paved)
- ⌘ State Boundary
- State Boundary
- ⌘ County Boundary
- Wildfire Daily Fire Perimeter



0 1 2 Miles

Datum: North American 1983