

IAP

Granite Pass Complex

MT-LNF-000962
8/9/21

5,739 acres
IR updated 8/5/21 @ 01:30

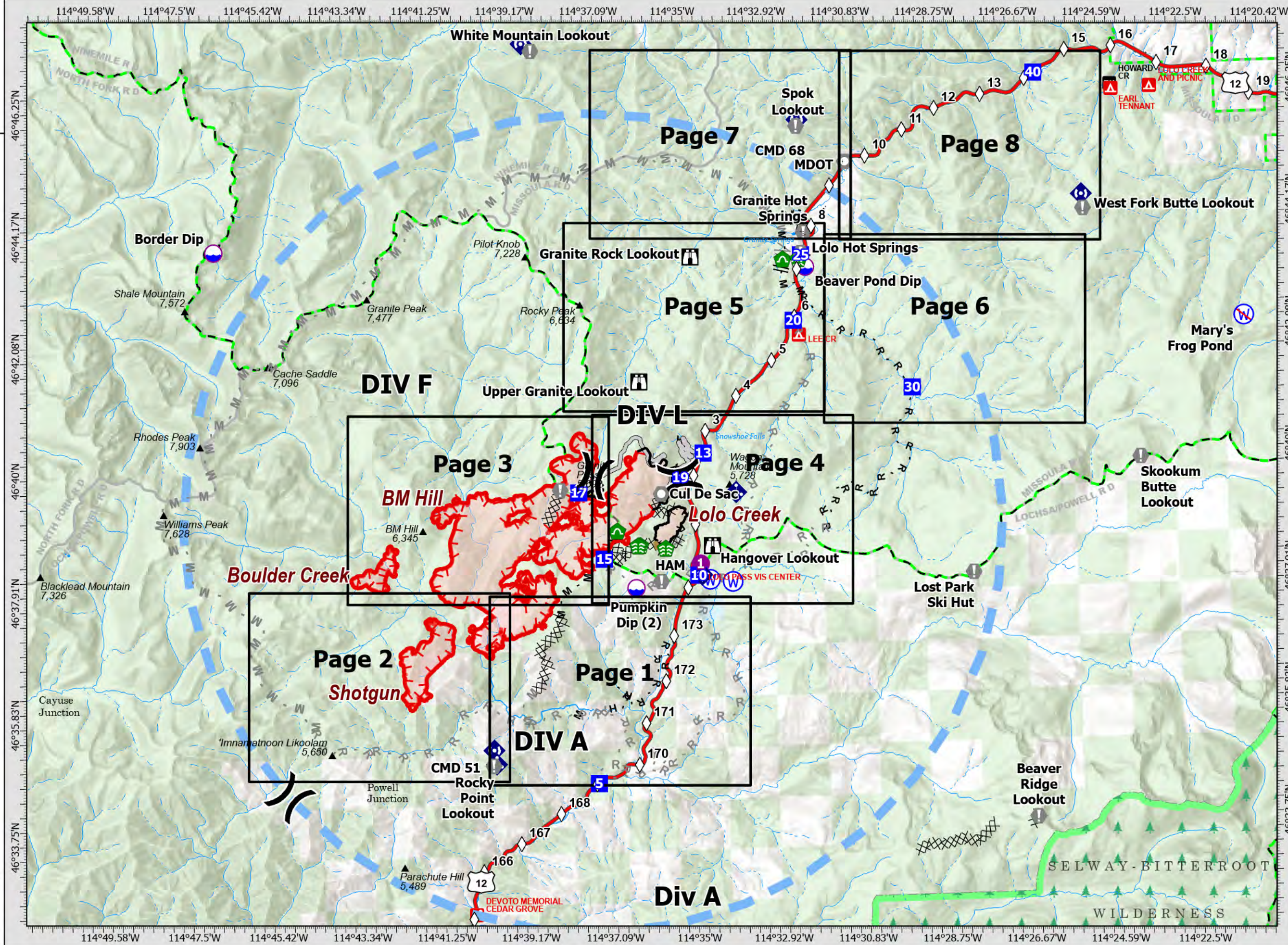
- Dip Site
- Helispot
- Division Break
- Drop Point
- Lookout
- Value at Risk
- Landmark
- Water Development or Draft Site
- Stream Crossing
- Culvert
- Mobile Weather Unit
- Internet Access
- Repeater
- Water Source
- Restricted Water Source
- Completed Dozer Line
- Completed Fuel Break
- Completed Hand Line
- Completed Mixed Construction Line
- Completed Road as Line
- Planned Fuel Break
- Planned Hand Line
- Planned Mixed Construction Line
- Planned Road as Line
- Access or Improved Road
- Repair Line
- Temporary Flight Restriction
- Fire Edge
- Contained Line
- Wildfire Daily Fire Perimeter
- Building Footprint
- FS Wilderness Boundary
- IAP Grid Index
- Mile Markers



0 0.5 1 2 Miles

Datum: North American 1983

Updated: 8/8/2021 1706



Granite Pass Complex

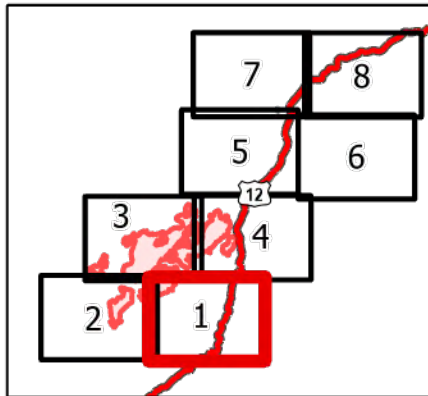
MT-LNF-000962
8/9/21

5,739 acres
IR updated 8/5/21 @ 01:30

- Wildfire Daily Fire Perimeter
- Drop Point
- Value at Risk
- Gate
- Bridge
- Mobile Weather Unit
- Repeater
- MileMarkers
- Completed Dozer Line
- Completed Hand Line
- Completed Mixed Construction Line
- Completed Road as Line
- Planned Mixed Construction Line
- Planned Road as Line
- Fire Edge
- Trail
- National Designated Trail
- Closed FS Road

Div A

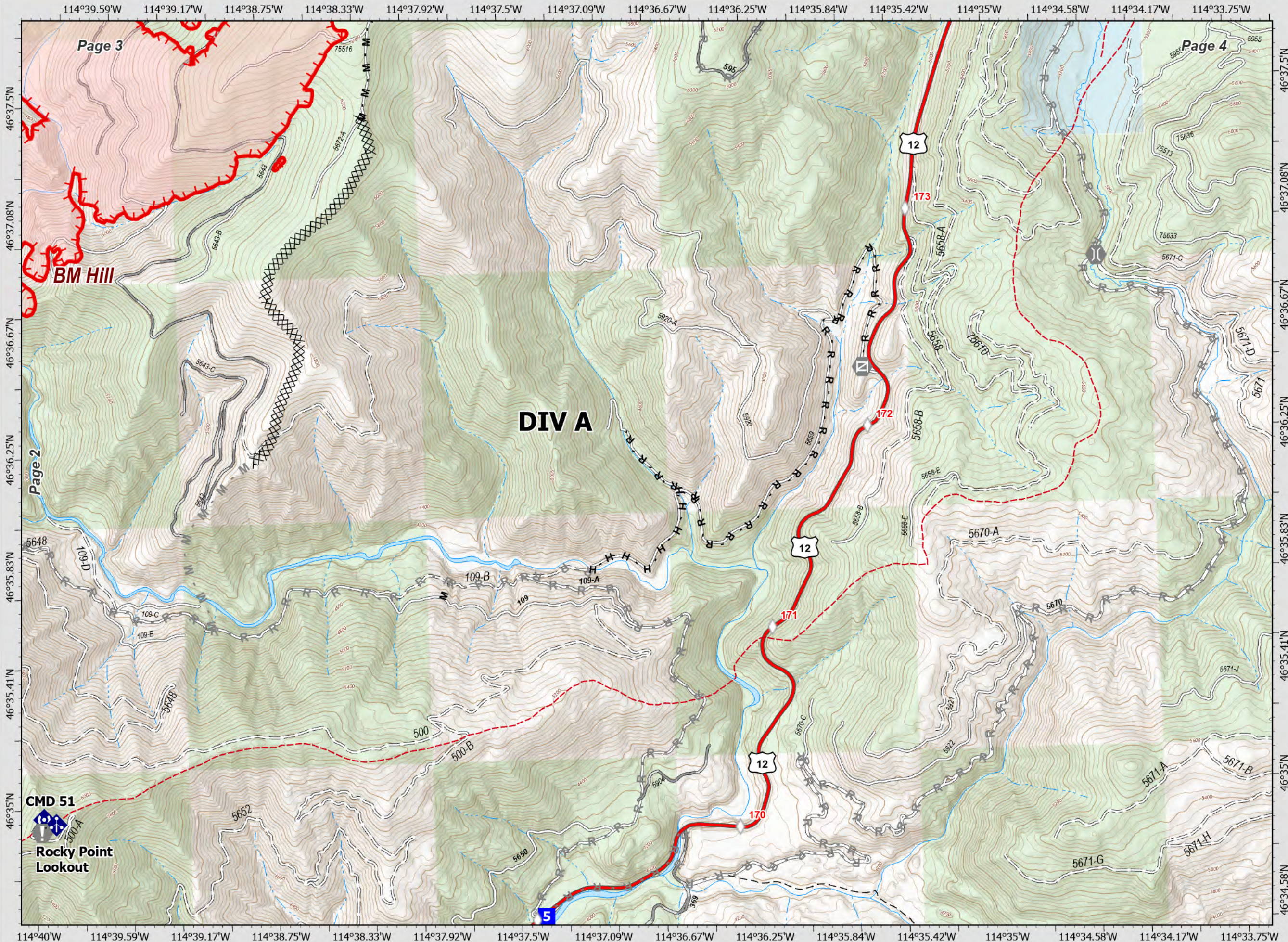
Page 1 of 8



0 0.25 0.5 Miles

Datum: North American 1983











NR IMT1 GISS Updated: 8/8/2021 1703



Granite Pass Complex

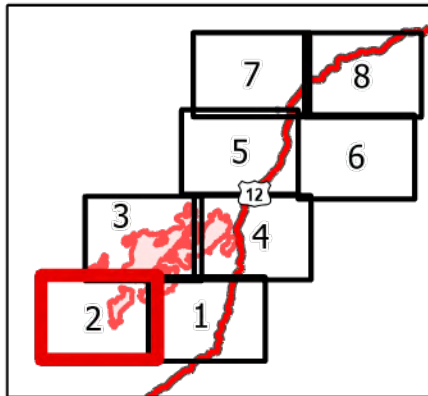
MT-LNF-000962
8/9/21

5,739 acres
IR updated 8/5/21 @ 01:30

-  Wildfire Daily Fire Perimeter
-  Value at Risk
-  Mobile Weather Unit
-  Repeater
-  Planned Mixed Construction Line
-  Planned Road as Line
-  Fire Edge
-  Trail
-  National Designated Trail
-  Closed FS Road

DIV A & F

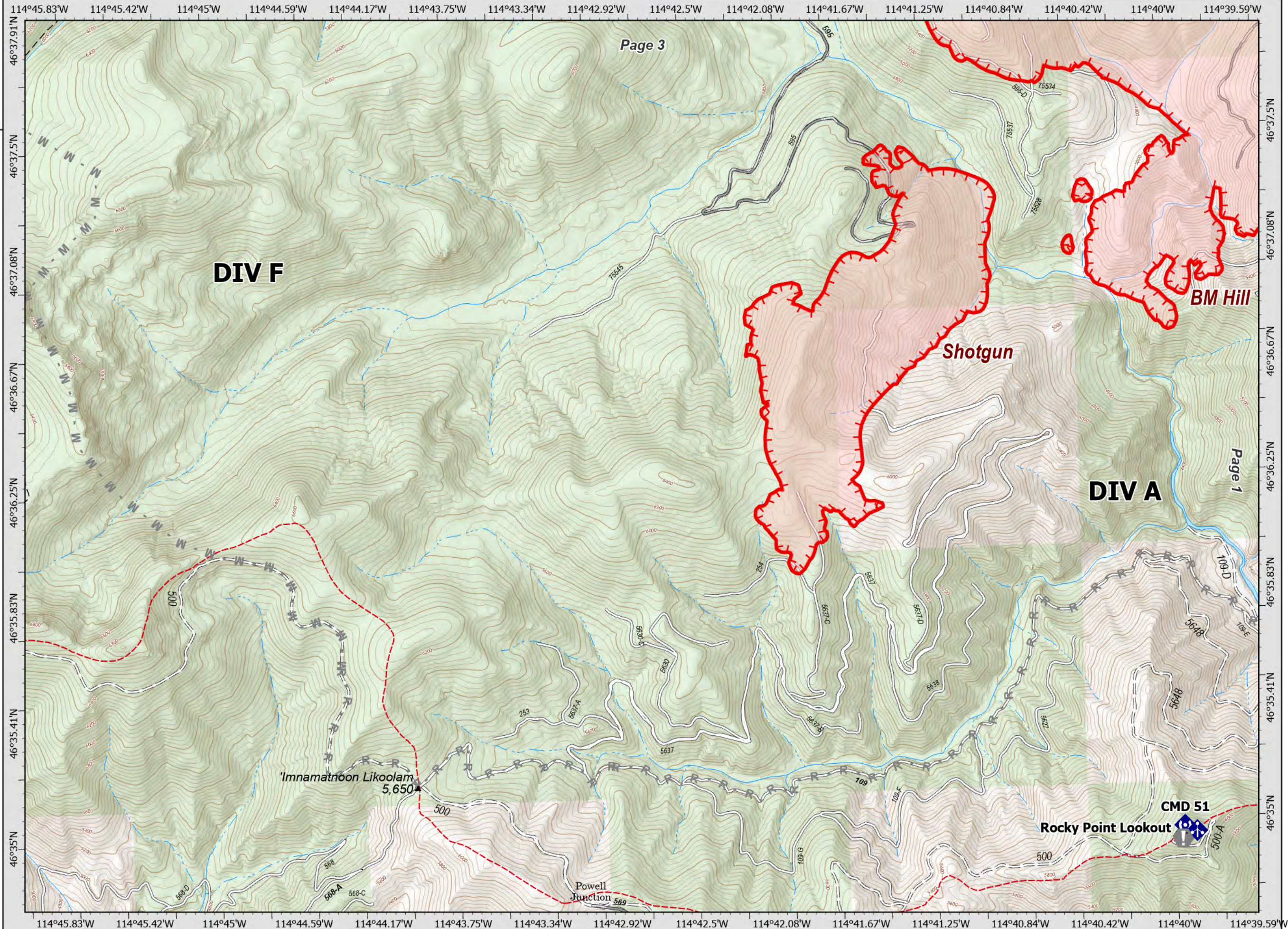
Page 2 of 8



0 0.25 0.5 Miles

Datum: North American 1983


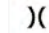

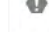
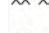




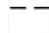


NR IMT1 GISS Updated: 8/8/2021 1703



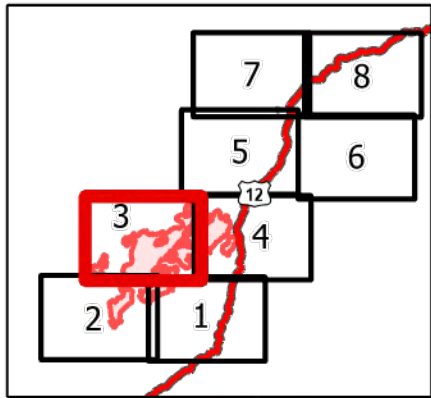
Granite Pass Complex

MT-LNF-000962
8/9/21

5,739 acres
IR updated 8/5/21 @ 01:30

-  Wildfire Daily Fire Perimeter
-  Division Break
-  Drop Point
-  Value at Risk
-  Completed Dozer Line
-  Completed Mixed Construction Line
-  Planned Road as Line
-  Access or Improved Road
-  Fire Edge
-  Contained Line
-  Trail
-  Closed FS Road

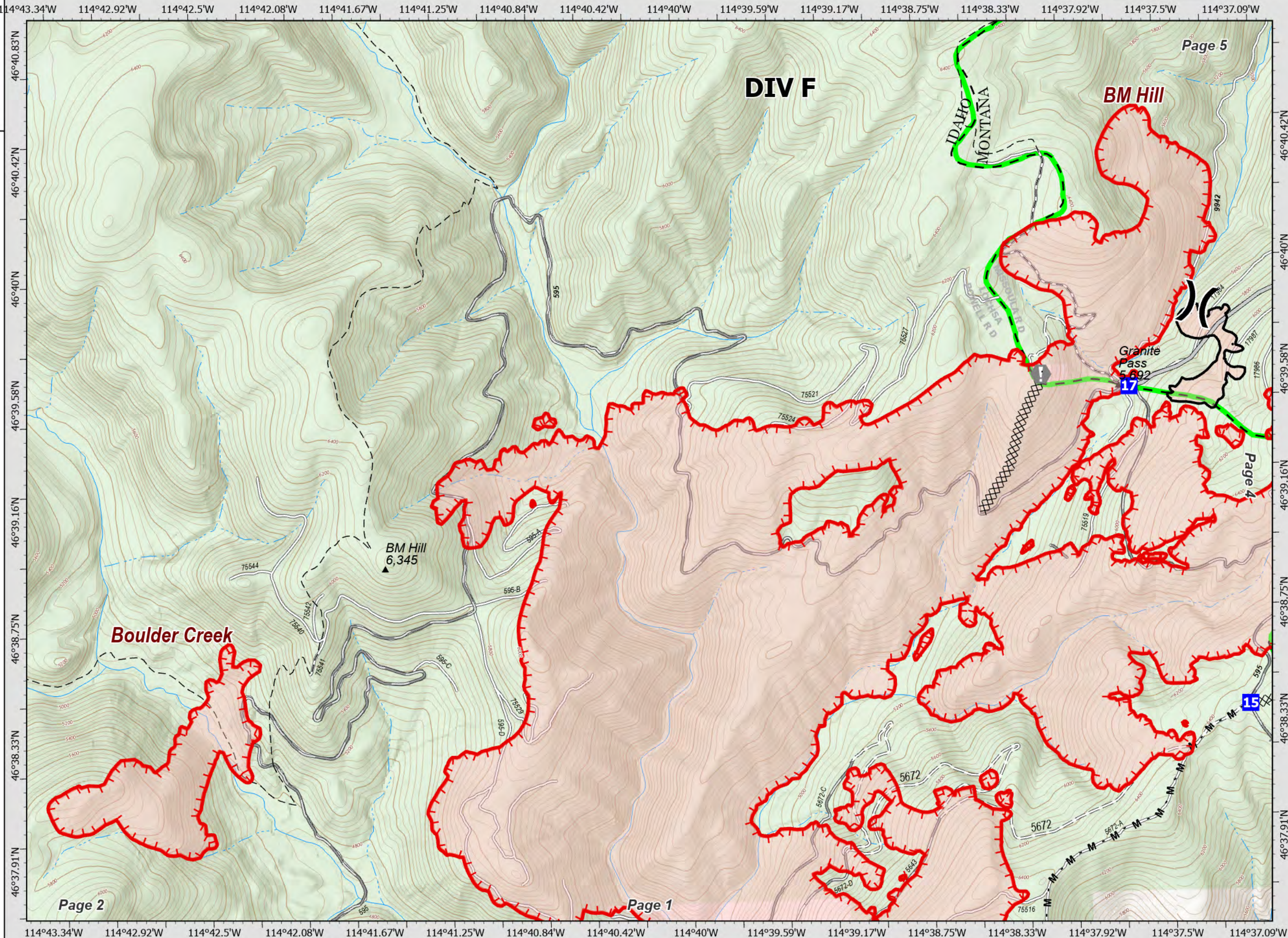
DIV F Page 3 of 8



0 0.25 0.5 Miles

Datum: North American 1983

NR IMT1 GISS Updated: 8/8/2021 1704



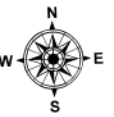
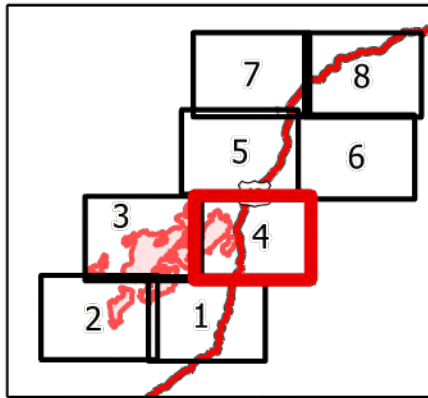
Granite Pass Complex

MT-LNF-000962
8/9/21

5,739 acres
IR updated 8/5/21 @ 01:30

- Wildfire Daily Fire Perimeter
- Dip Site
- Hellspot
- Division Break
- Drop Point
- Lookout
- Value at Risk
- Landmark
- Gate
- Bridge
- Stream Crossing
- Culvert
- Mobile Weather Unit
- Internet Access
- Water Source
- MileMarkers
- Completed Dozer Line
- Completed Hand Line

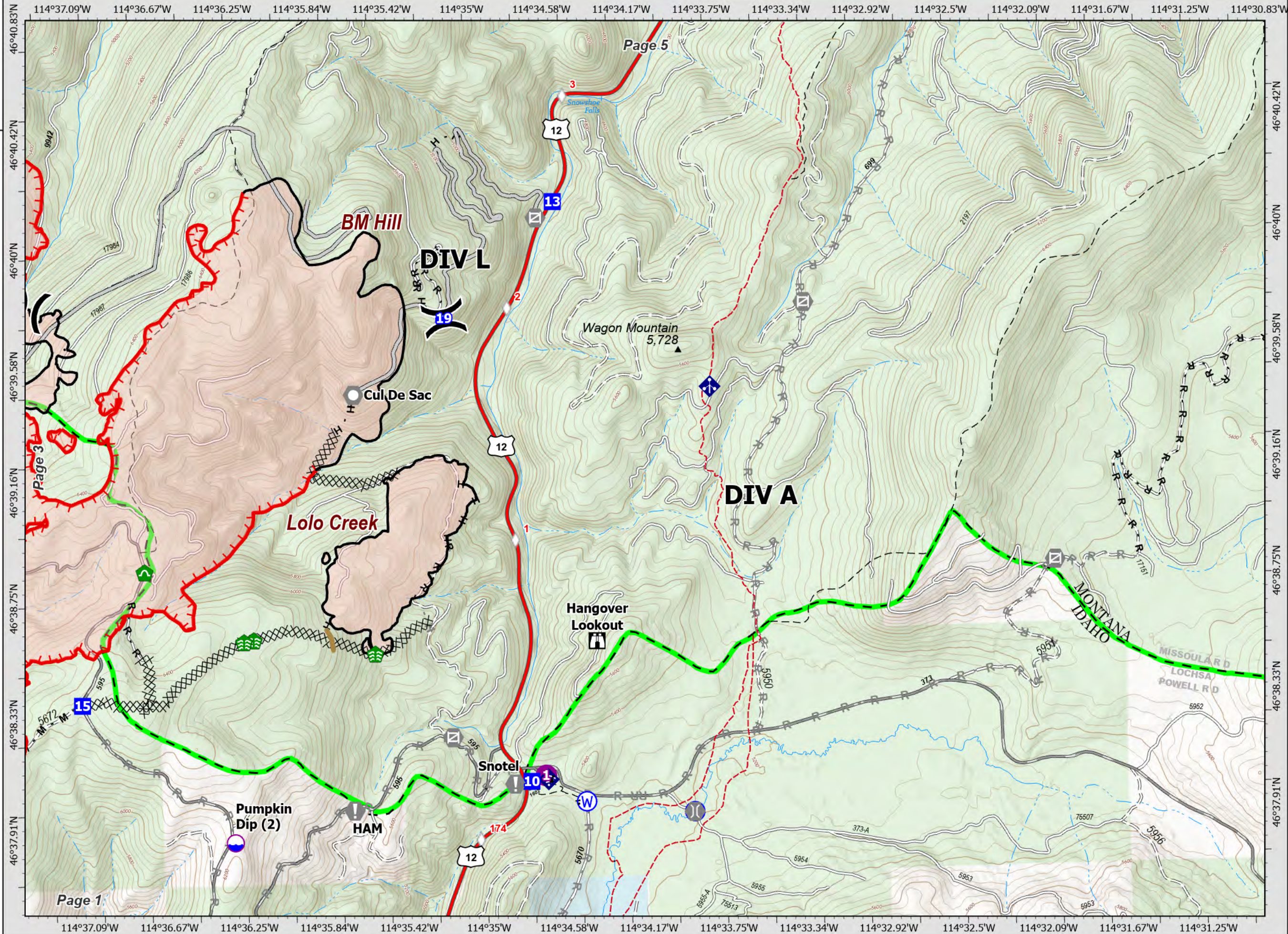
DIV A&L Page 4 of 8



0 0.25 0.5 Miles

Datum: North American 1983

NR IMT1 GISS Updated: 8/8/2021 1704



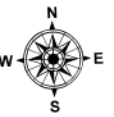
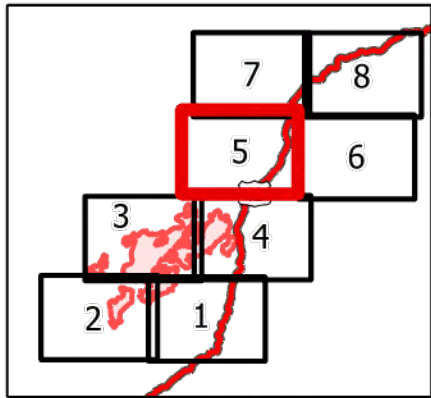
Granite Pass Complex

MT-LNF-000962
8/9/21

5,739 acres
IR updated 8/5/21 @ 01:30

- Dip Site
- Drop Point
- Lookout
- Value at Risk
- Gate
- Bridge
- Water Development or Draft Site
- Repair Point
- Landing or Log Deck
- Culvert
- MileMarker
- Completed Dozer Line
- Completed Fuel Break
- Completed Hand Line
- Completed Mixed Construction Line
- Completed Road as Line
- Planned Fuel Break
- Planned Mixed Construction Line
- Planned Road as Line
- Trail

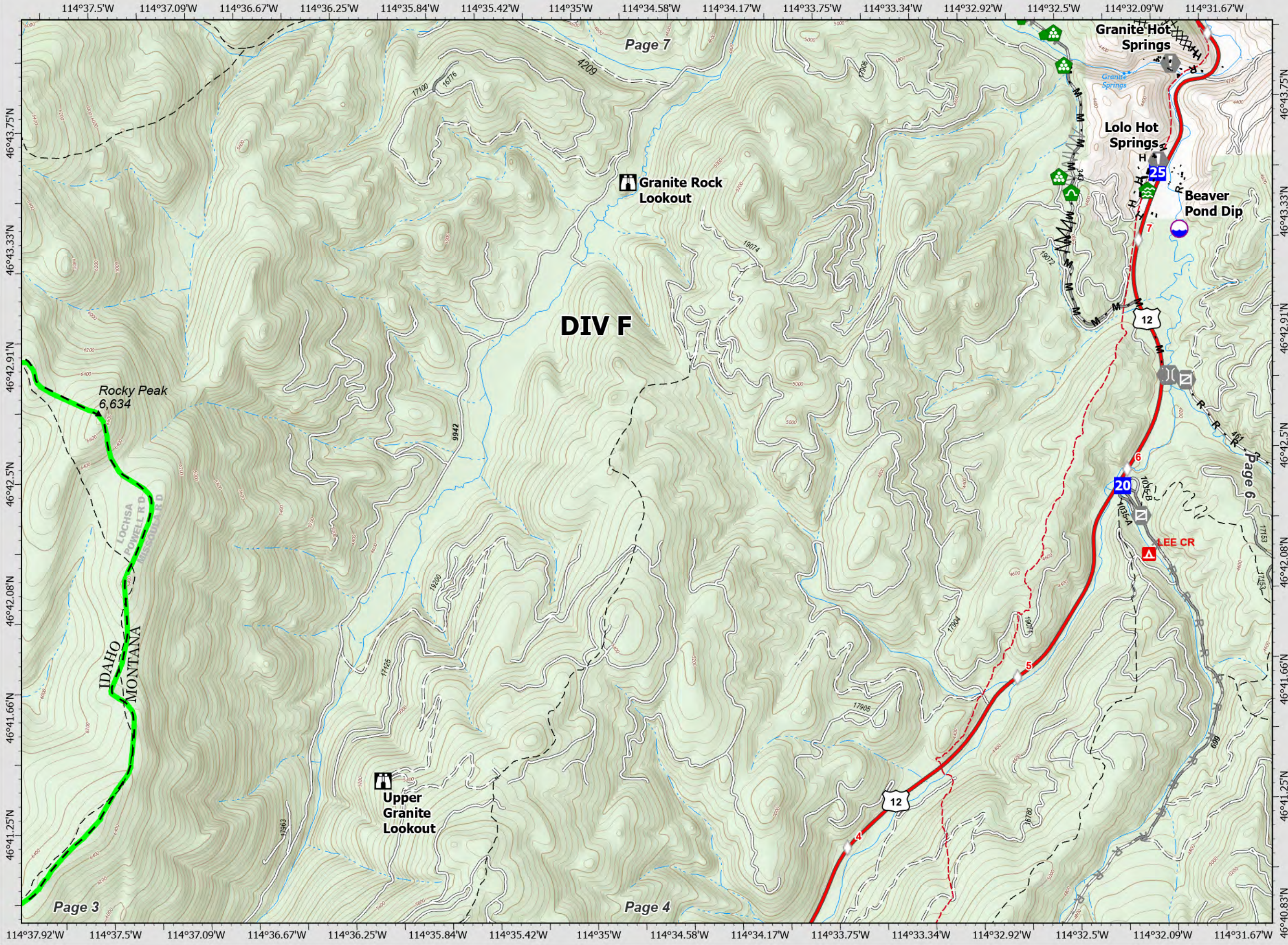
DIV F Page 5 of 8



0 0.25 0.5 Miles

Datum: North American 1983

NR IMT1 GISS Updated: 8/8/2021 1704



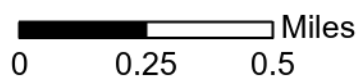
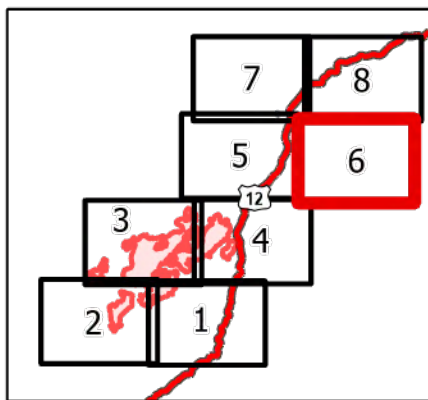
Granite Pass Complex

MT-LNF-000962
8/9/21

5,739 acres
IR updated 8/5/21 @ 01:30

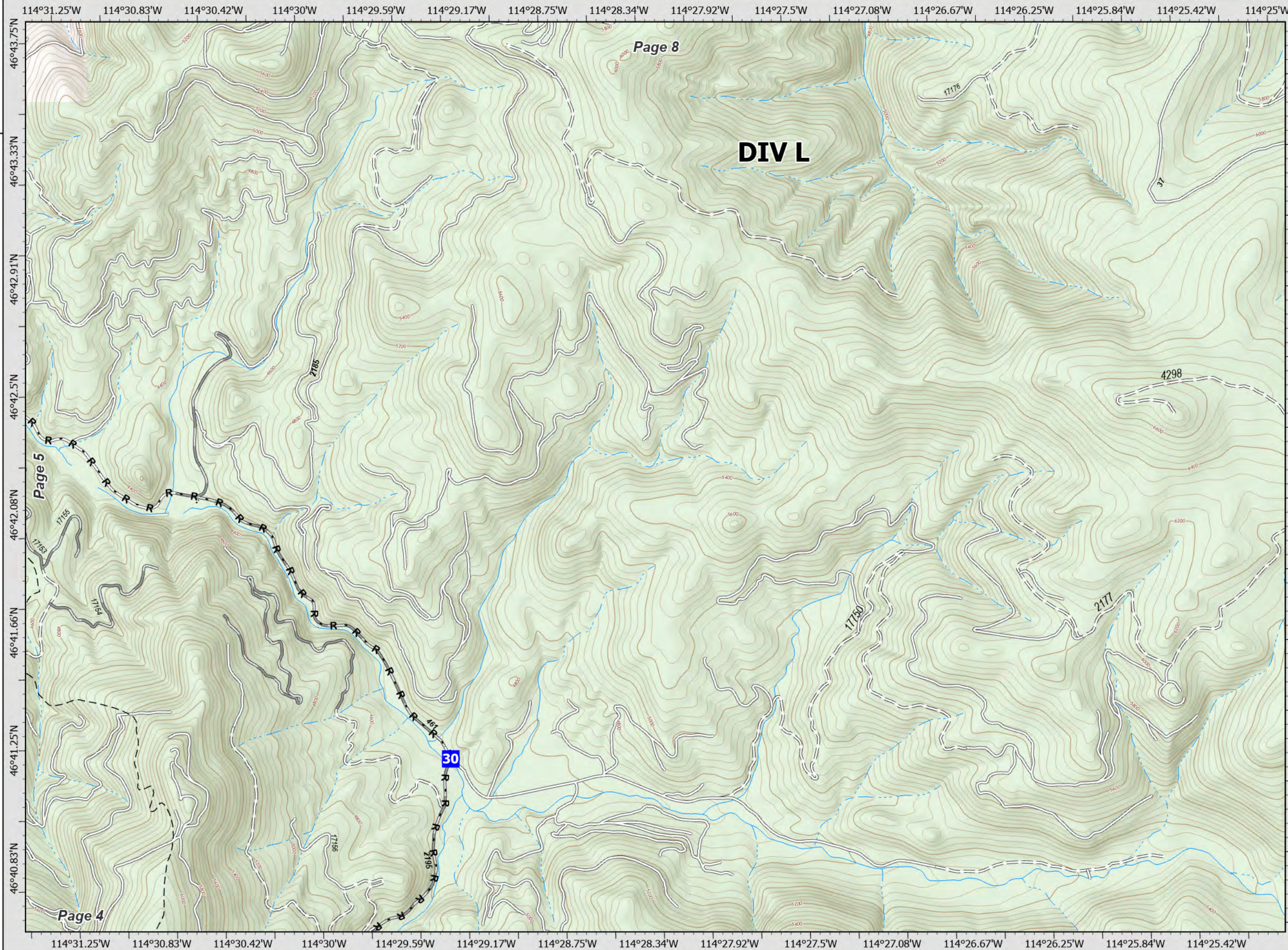
- Drop Point
- R - Completed Road as Line
- Trail
- Closed FS Road

DIV L Page 6 of 8



Datum: North American 1983









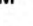





NR IMT1 GISS Updated: 8/8/2021 1704



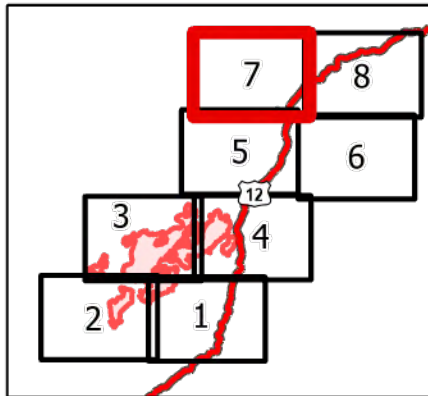
Granite Pass Complex

MT-LNF-000962
8/9/21

5,739 acres
IR updated 8/5/21 @ 01:30

-  Value at Risk
-  Landmark
-  Repair Point
-  Landing or Log Deck
-  Repeater
-  MileMarkers
-  Completed Dozer Line
-  Completed Hand Line
-  Completed Mixed Construction Line
-  Completed Road as Line
-  Planned Mixed Construction Line
-  Trail
-  National Designated Trail
-  Closed FS Road

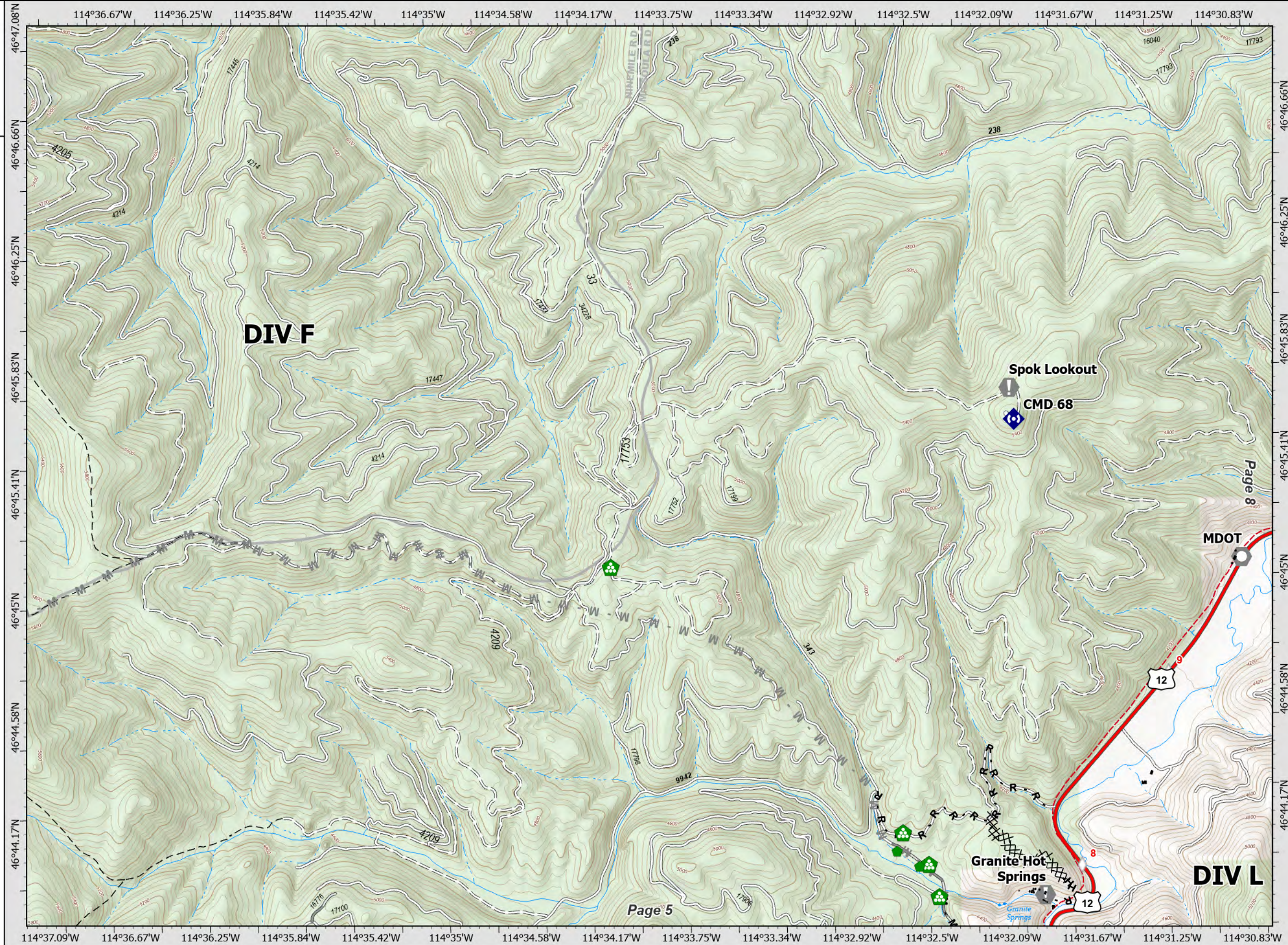
DIV L Page 7 of 8



0 0.25 0.5 Miles

Datum: North American 1983

NR IMT1 GISS Updated: 8/8/2021 1704



DIV L










Page 8

Page 5

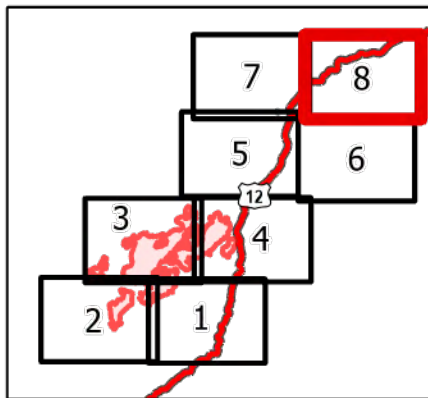
Granite Pass Complex

MT-LNF-000962
8/9/21

5,739 acres
IR updated 8/5/21 @ 01:30

-  Drop Point
-  Value at Risk
-  Landmark
-  Landing or Log Deck
-  Repeater
-  MileMarkers
-  Trail
-  National Designated Trail
-  Closed FS Road

DIV L Page 8 of 8



0 0.25 0.5 Miles

Datum: North American 1983

NR IMT1 GISS Updated: 8/8/2021 1705

