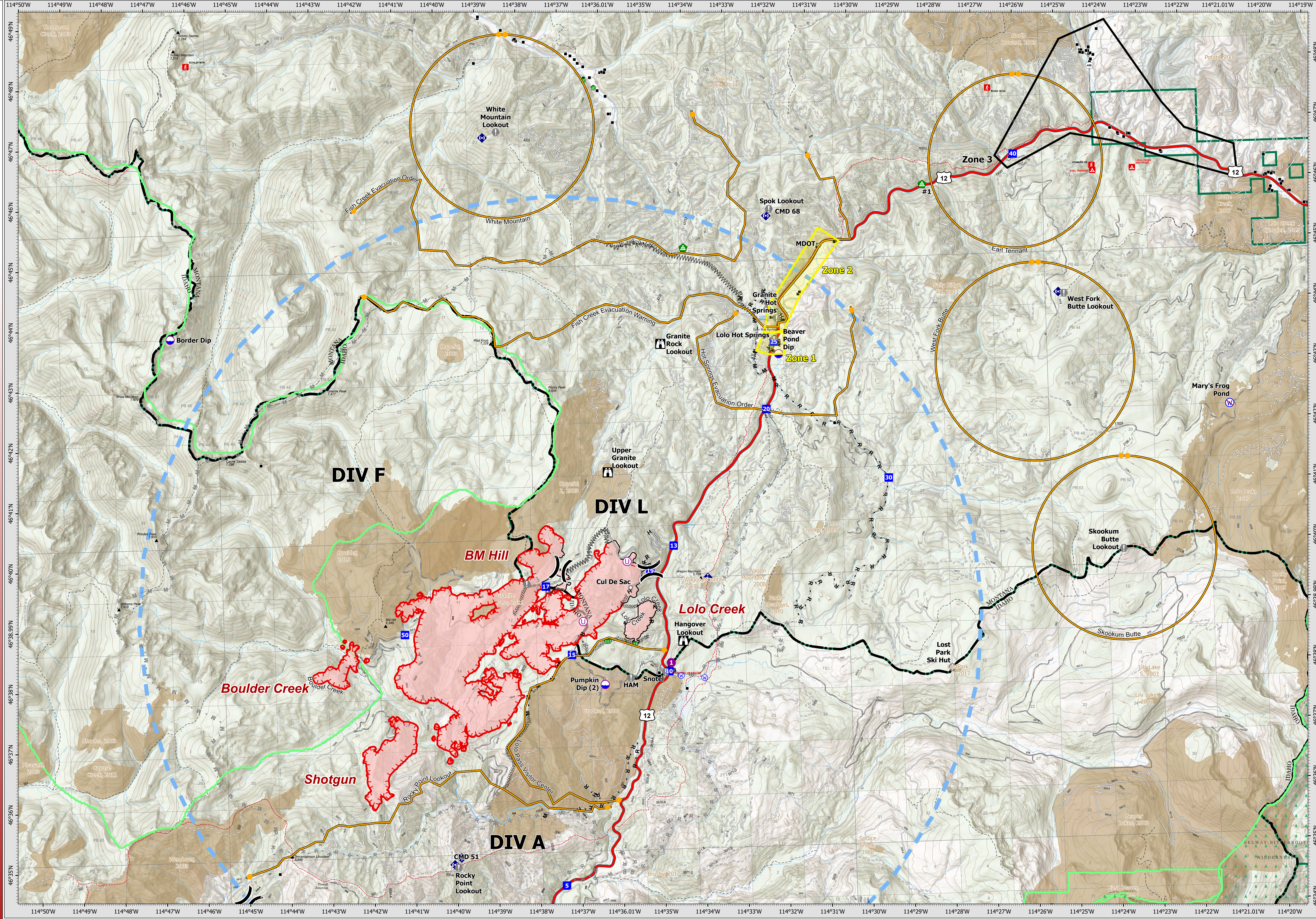


8/11/21

PLANNING



Granite Pass Complex

MT-LNF-000962
8/11/21

5,758 acres
IR updated 8/10/21 @

- ▬ Wildfire Daily Fire Perimeter
- ▬▬▬▬ Completed Dozer Line
- ▬▬▬▬▬▬ Completed Fuel Break
- H Completed Hand Line
- M Completed Mixed Construction Line
- R Completed Road as Line
- ▬▬▬▬▬▬ Planned Fuel Break

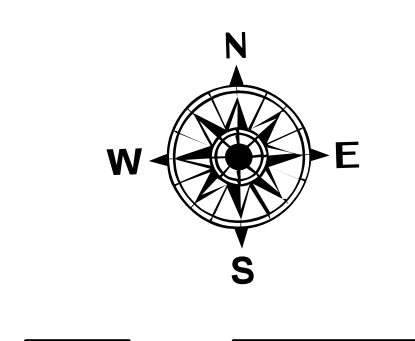
- H Planned Hand Line
- M Planned Mixed Construction Line
- R Planned Road as Line
- ▬ Access or Improved Road
- ▬▬▬▬ Repair Line
- ▬▬▬▬▬▬ Temporary Flight Restriction
- ▬▬▬▬ Fire Edge

- ▬ Contained Line
- ▬▬▬▬ MT/ID State Boundary
- ▬▬▬▬ Proposed Great Burn Wilderness Area
- ▬▬▬▬▬▬ FS Wilderness Boundary
- Dip Site
- Helispot
- Unimproved Landing Area

- X Division Break
- Drop Point
- ⬮ Lookout
- ⬮ Value at Risk
- ⬮ Landmark
- ⬮ Water Development or Draft Site
- ⬮ Stream Crossing

- ⬮ Landing or Log Deck
- ⬮ Mobile Weather Unit
- ⬮ Internet Access
- ⬮ Repeater
- ⬮ Water Source
- ⬮ Restricted Water Source
- Structures

- ▬ Paved FS Road
- ▬ Gravel Road
- ▬ Dirt Road
- ▬ Unimproved Road
- ▬ Fire History
- ▬▬▬▬ Evacuation Warning
- ▬▬▬▬ Pre-planning/None
- ▬▬▬▬ Management Action Point



Datum: North American 1983
Scale: 1:43,000
NR\MT1 GIS\ Updated: 8/11/2021 08:43