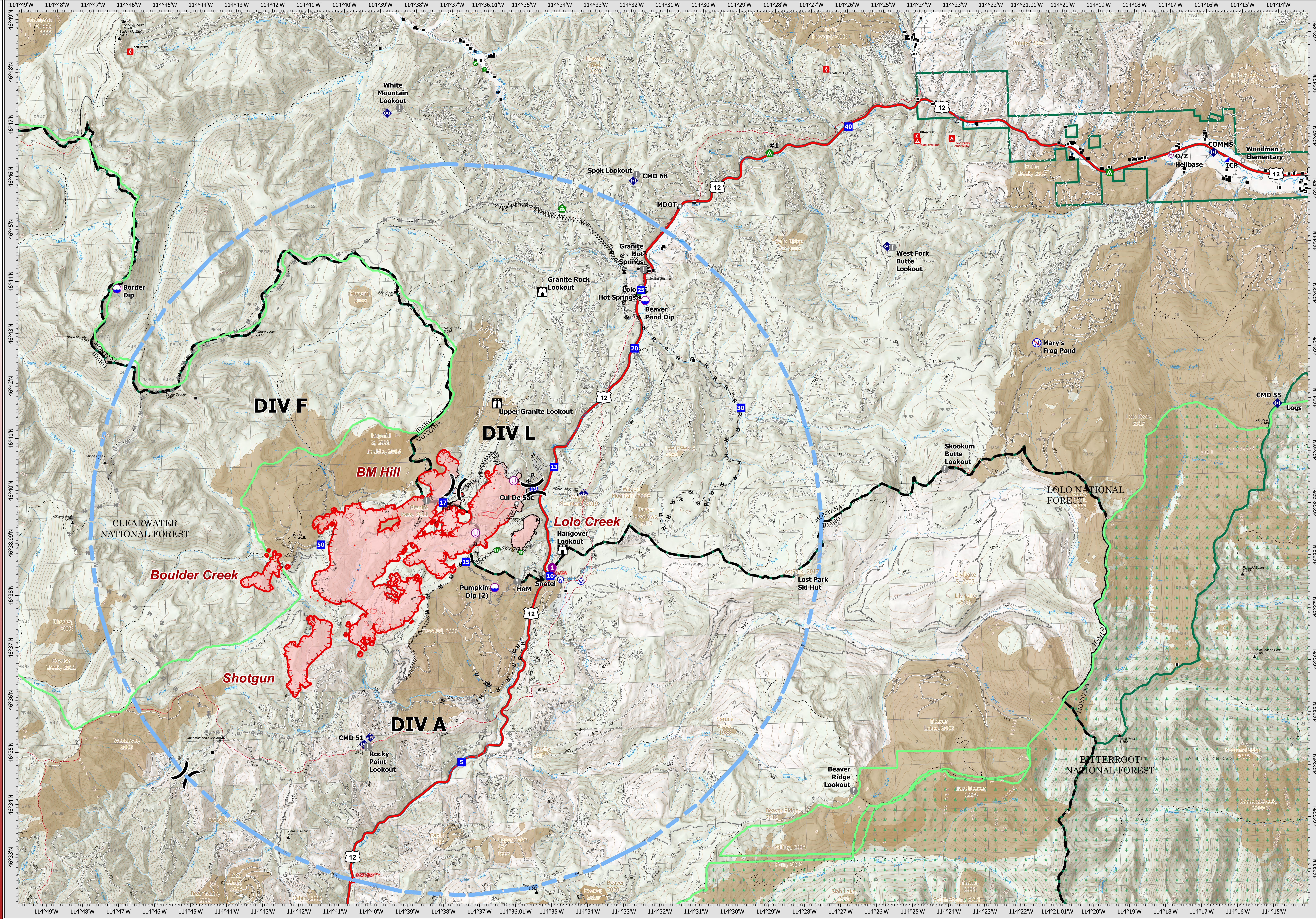


8/12/21



OPERATIONS

Granite Pass Complex

MT-LNF-000962
8/12/21

5,758 acres
IR updated 8/10/21 @

- Dip Site
- Helispot
- Helibase
- Unimproved Landing Area
- Division Break
- Incident Command Post
- Drop Point

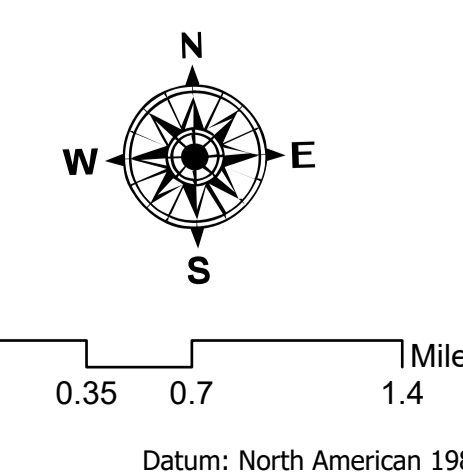
- Lookout
- Value at Risk
- Landmark
- Water Development or Draft Site
- Stream Crossing
- Landing or Log Deck
- Mobile Weather Unit

- Internet Access
- Repeater
- Water Source
- Restricted Water Source
- Temporary Flight Restriction
- Completed Dozer Line
- Completed Fuel Break
- Completed Hand Line

- Completed Mixed Construction Line
- Planned Fuel Break
- Planned Hand Line
- Planned Mixed Construction Line
- Planned Road as Line
- Access or Improved Road
- Repair Line

- Temporary Flight Restriction
- Fire Edge
- Contained Line
- IR Isolated Heat Source
- IR Heat Perimeter
- IR Scattered Heat
- Wildfire Daily Fire Perimeter
- MT/ID State Boundary

- Proposed Great Burn Wilderness Area
- FS Wilderness Boundary
- Structures
- Paved FS Road
- Gravel Road
- Dirt Road
- Unimproved Road
- Fire History



Datum: North American 1983
Scale: 1:43,000
NRI/MT1 GIS/ Updated: 8/11/2021 13:49