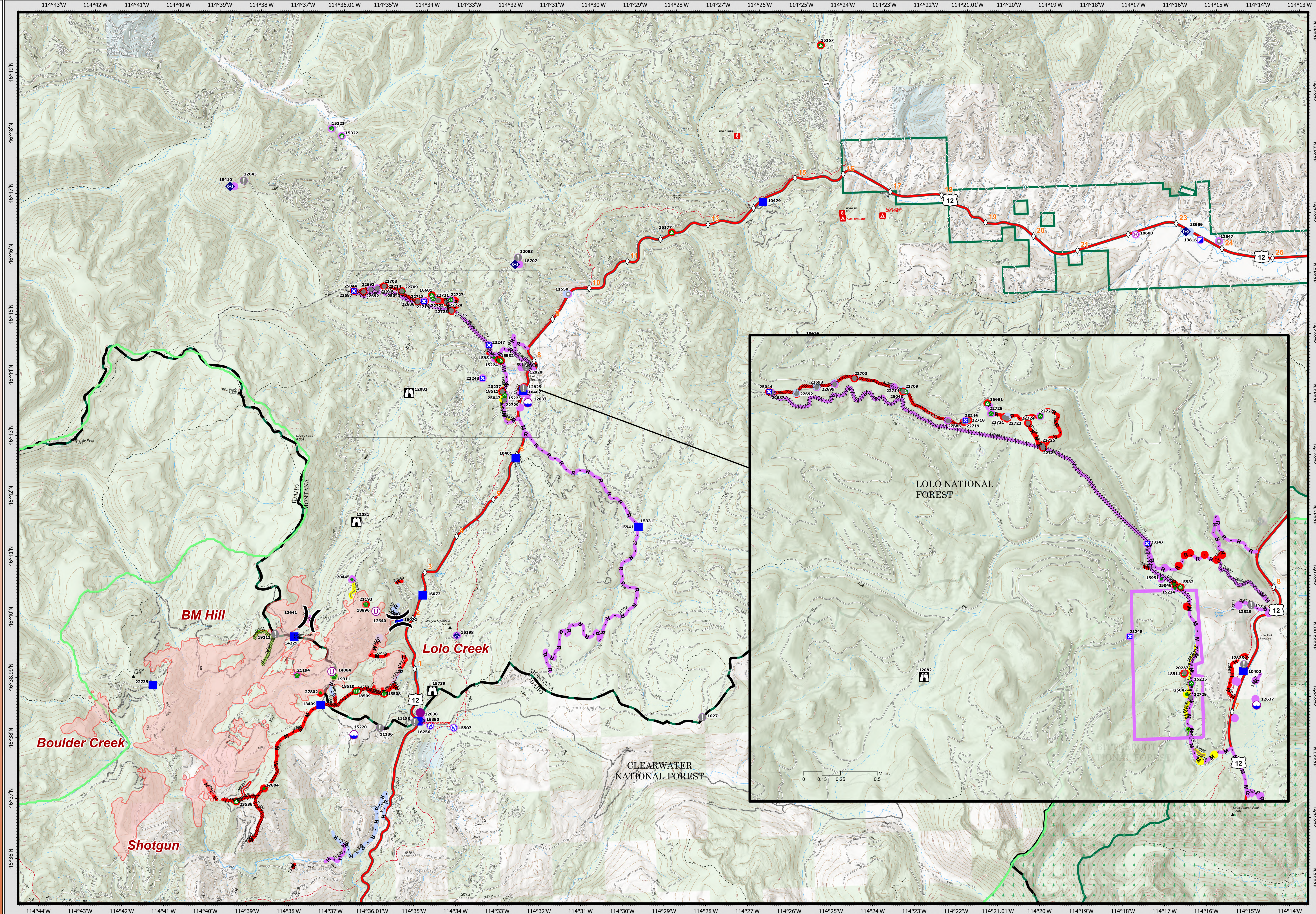


# SUPPRESSION REPAIR



## Granite Pass Complex

MT-LNF-000962  
 8/20/2021  
 5910 acres  
 IR updated 8/16/21 @ 03:26

<ul style="list-style-type: none"> <li>Other</li> <li>Wildfire Daily Fire Perimeter</li> <li>Completed Dozer Line</li> <li>Completed Fuel Break</li> <li>MW Completed Hand Line</li> <li>M Completed Mixed Construction Line</li> <li>R Completed Road as Line</li> <li>Access or Improved Road</li> </ul>	<ul style="list-style-type: none"> <li>Fence</li> <li>Other</li> <li>Repair Line</li> <li>MT/ID State Boundary</li> <li>Proposed Great Burn Wilderness Area</li> <li>FS Wilderness Boundary</li> <li>Dip Site</li> </ul>	<ul style="list-style-type: none"> <li>Helispot</li> <li>Helibase</li> <li>Unimproved Landing Area</li> <li>Division Break</li> <li>Incident Command Post</li> <li>Drop Point</li> <li>Closure</li> </ul>	<ul style="list-style-type: none"> <li>Lookout</li> <li>Value at Risk</li> <li>Other</li> <li>Landmark</li> <li>Water Development or Draft Site</li> <li>Stream Crossing</li> <li>Repair Point</li> <li>Landing or Log Deck</li> </ul>	<ul style="list-style-type: none"> <li>Culvert</li> <li>Mobile Weather Unit</li> <li>Internet Access</li> <li>Repeater</li> <li>Water Source</li> <li>Restricted Water Source</li> <li>Mile Marker</li> </ul>	<ul style="list-style-type: none"> <li>Paved FS Road</li> <li>Gravel Road</li> <li>Dirt Road</li> <li>Unimproved Road</li> <li>No Repair Needed</li> <li>Unknown</li> <li>Completed - Inspected</li> <li>In Progress</li> </ul>	<ul style="list-style-type: none"> <li>Repair Needed</li> <li>No Repair Needed</li> <li>Unknown</li> <li>Completed - Inspected</li> <li>In Progress</li> <li>Repair Needed</li> <li>No Repair Needed</li> <li>Unknown</li> </ul>
--	--	---	--	---	---	--

