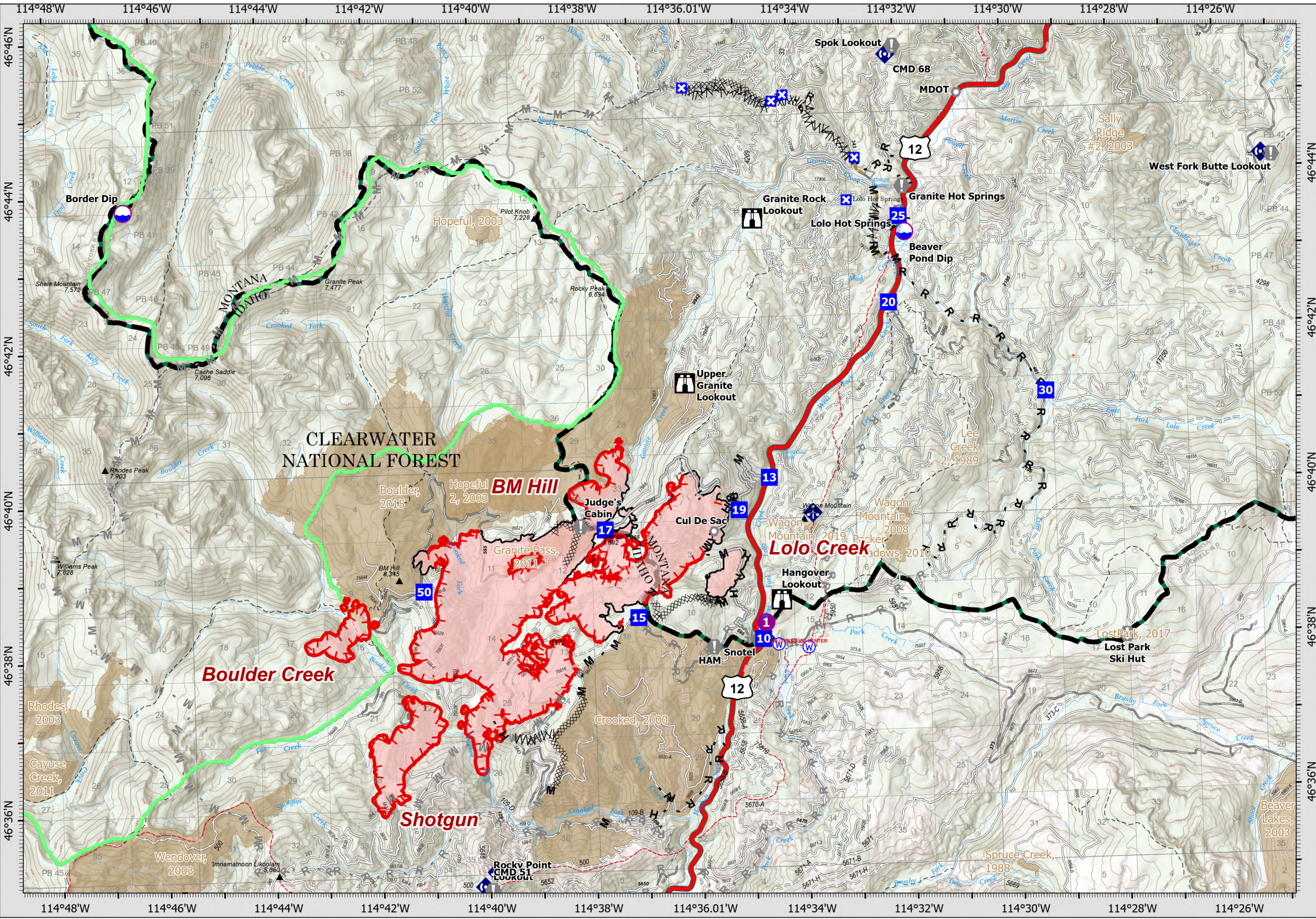


8/28/21

OPERATIONS



Granite Pass Complex
 MT-LNF-000962
 8/28/21
 5910 acres
 IR updated 8/16/21 @ 03:26

- | | | | | | |
|---|---|--|---|--|---|
| <ul style="list-style-type: none"> Dip Site Helispot Drop Point Closure Lookout Value at Risk | <ul style="list-style-type: none"> Landmark Water Development or Draft Site Mobile Weather Unit Internet Access Repeater Water Source | <ul style="list-style-type: none"> Completed Dozer Line Completed Fuel Break Completed Hand Line Completed Mixed Construction Line Completed Road as Line Planned Fuel Break | <ul style="list-style-type: none"> Planned Hand Line Planned Mixed Construction Line Planned Road as Line Access or Improved Road Other Repair Line | <ul style="list-style-type: none"> Road Repair Fire Edge Contained Line Other Wildfire Daily Fire Perimeter MT/ID State Boundary | <ul style="list-style-type: none"> Proposed Great Burn Wilderness Area Paved FS Road Gravel Road Dirt Road Unimproved Road Fire History |
|---|---|--|---|--|---|



0 0.5 1 2 Miles

Datum: North American 1983
 Scale: 1:55,000
 NR RST GISS Updated: 8/27/2021 1538