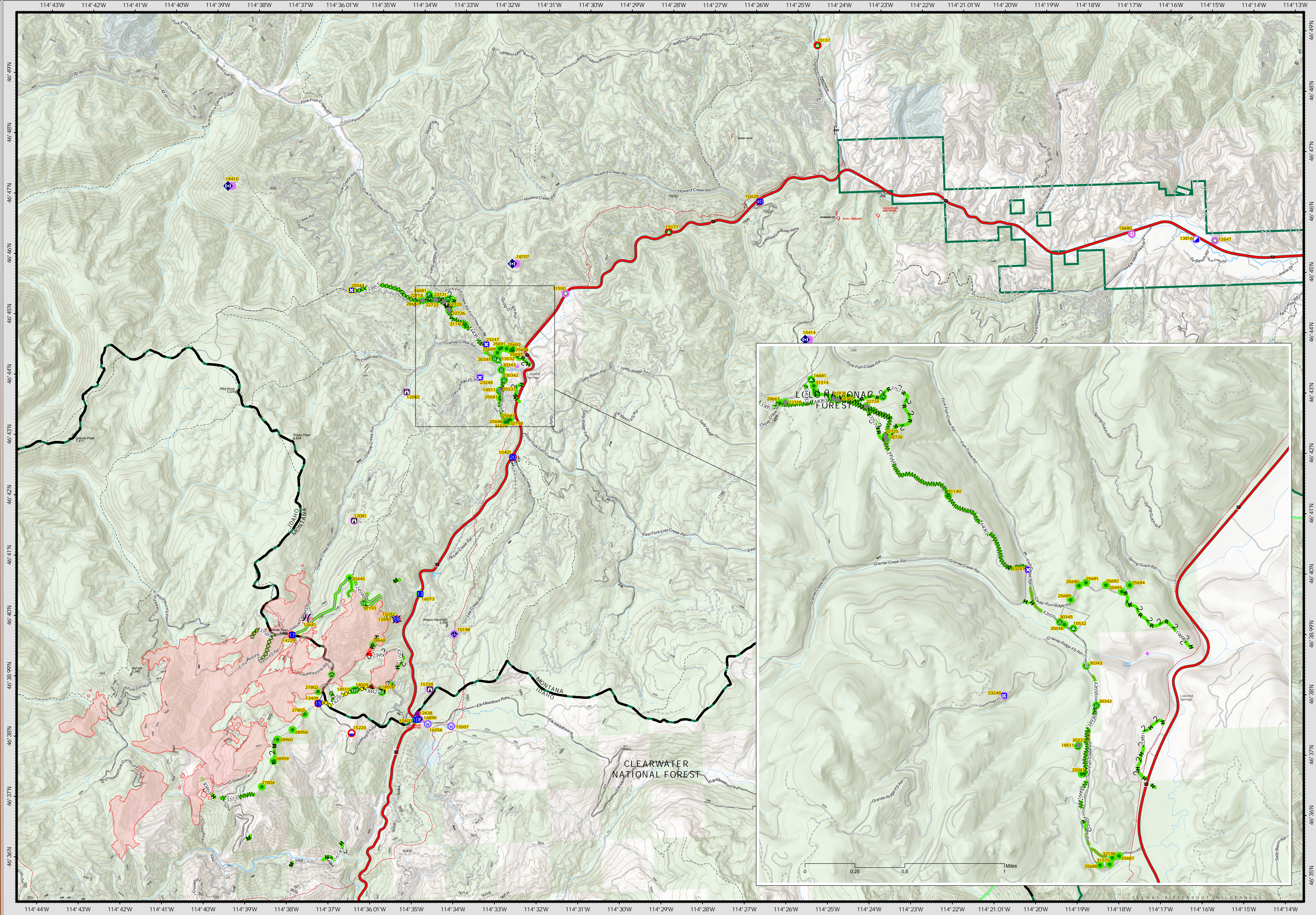


# SUPPRESSION REPAIR

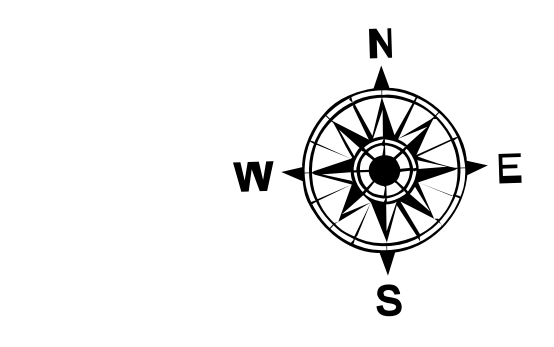


## Granite Pass Complex

MT-LNF-000962  
9/1/2021 Day

5910 acres  
IR updated 8/16/21 @ 03:26

Other	Access or Improved Road	Dip Site	Closure	Landing or Log Deck	Paved FS Road	Unknown
Wildfire Daily Fire Perimeter	Other	Hellspot	Lookout	Culvert	Gravel Road	Completed - Inspected
Completed Dozer Line	Repair Line	Hellbase	Other	Mobile Weather Unit	Dirt Road	In Progress
Completed Fuel Break	Road Repair	Division Break	Landmark	Internet Access	Unimproved Road	Repair Needed
Completed Hand Line	MT/ID State Boundary	Incident Command Post	Stream Crossing	Repeater	Water Source	Unknown
Completed Mxed Construction Line	Proposed Great Burn Wilderness Area	Drop Point	Road Repair	Water Source	Restricted Water Source	
Completed Road as Line	FS Wilderness Boundary		Repair Point			



0 0.5 1 2 Miles