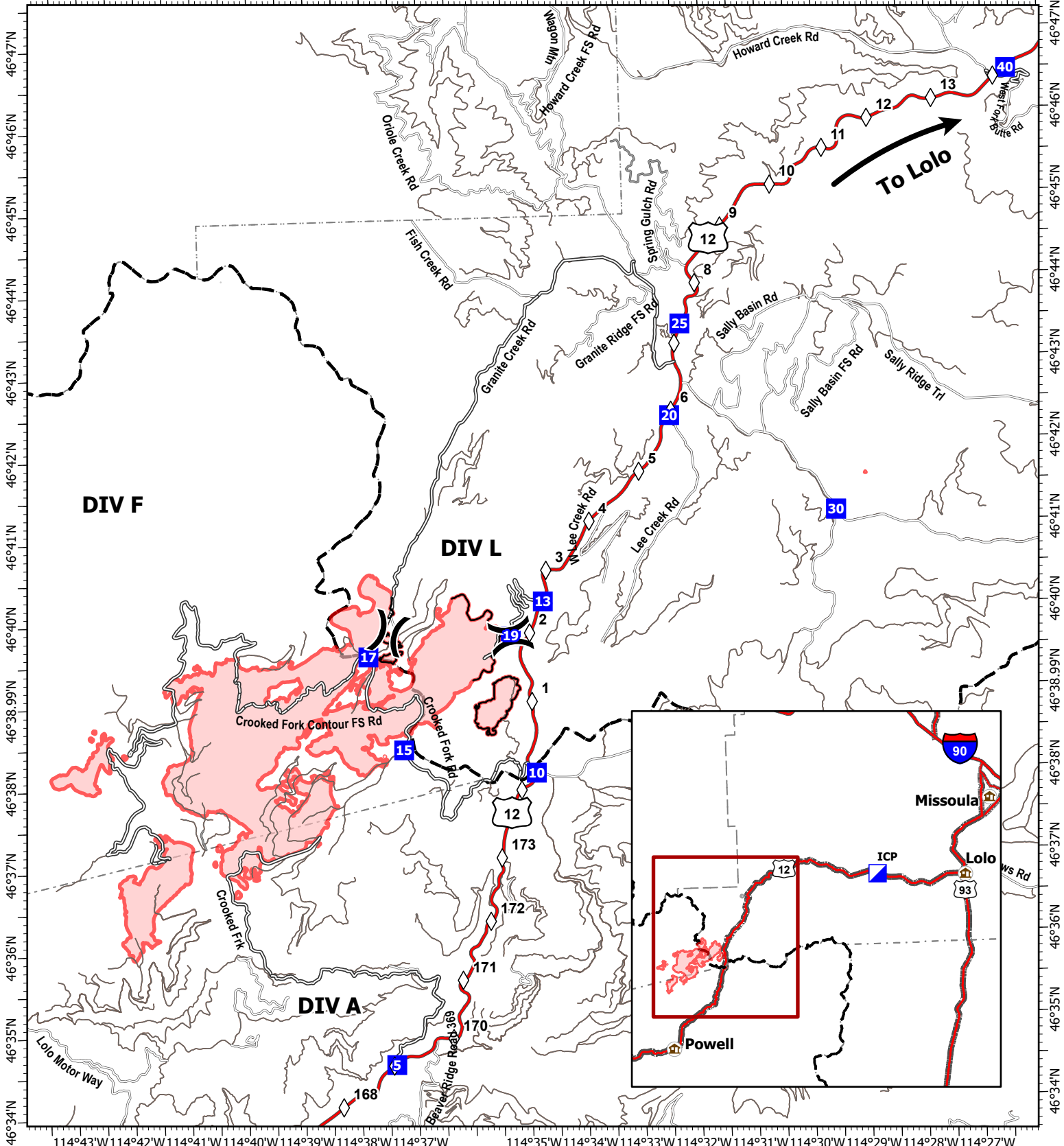


# Transportation

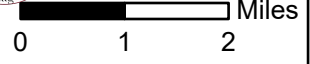
114°43'W 114°42'W 114°41'W 114°40'W 114°39'W 114°38'W 114°37'W      114°35'W 114°34'W 114°33'W 114°32'W 114°31'W 114°30'W 114°29'W 114°28'W 114°27'W 114°26'W



## Granite Pass Complex

5,758 acres  
IR updated 8/10/21 @  
20:30

- ◇ Mile Markers
- ⌘ Division Break
- Drop Point
- Contained Line
- Primary Highway
- Paved Roads
- Dirt (Not Paved)
- ⌘ State Boundary
- Wildfire Daily Fire Perimeter
- ⌘ State Boundary
- ⌘ County Boundary



Datum: North American 1983