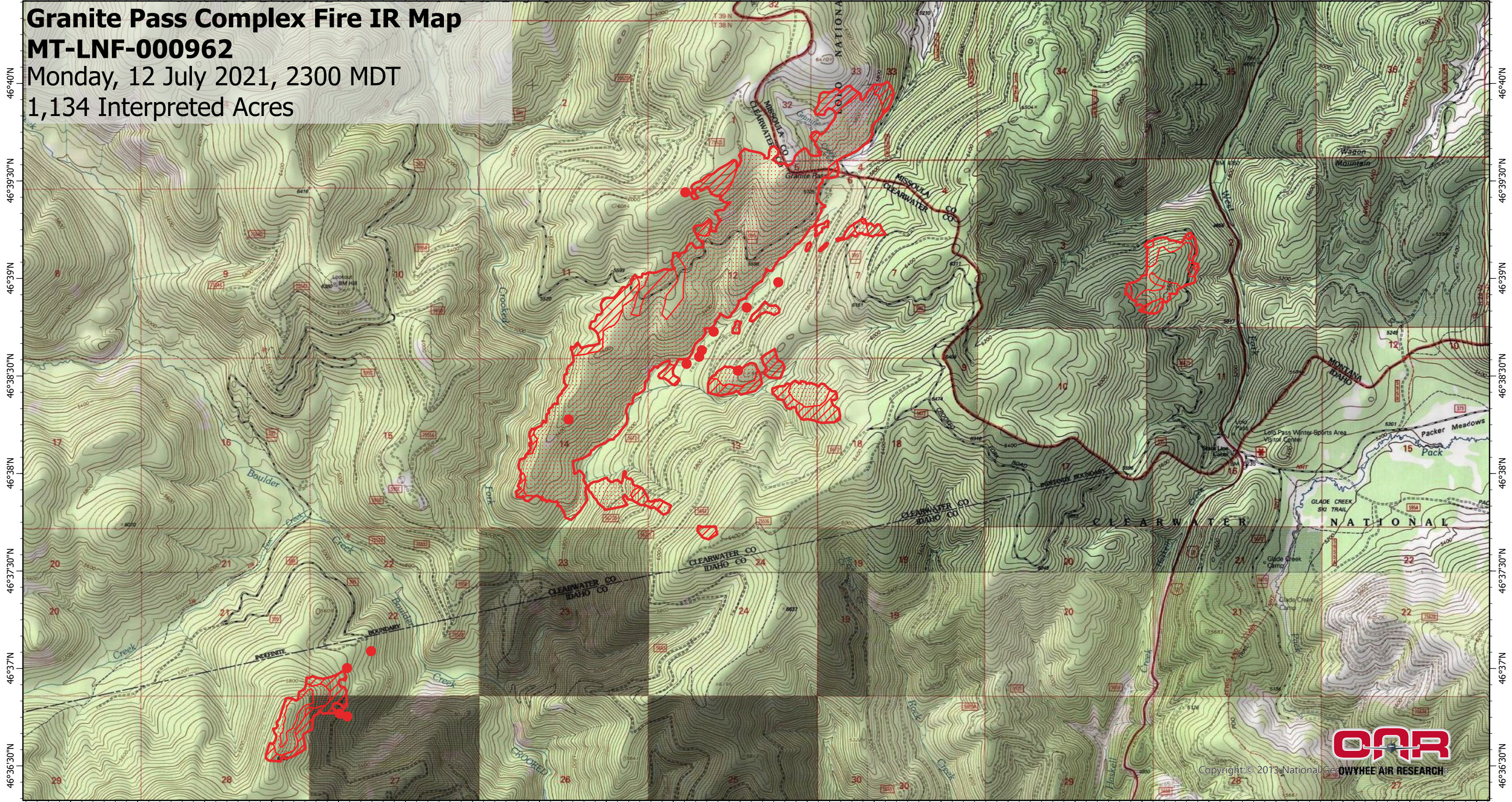


114°43'30"W 114°43'W 114°42'30"W 114°42'W 114°41'30"W 114°41'W 114°40'30"W 114°40'W 114°39'30"W 114°39'W 114°38'30"W 114°38'W 114°37'30"W 114°37'W 114°36'30"W 114°36'W 114°35'30"W 114°35'W 114°34'30"W 114°34'W 114°33'30"W 114°33'W

Granite Pass Complex Fire IR Map

MT-LNF-000962

Monday, 12 July 2021, 2300 MDT
1,134 Interpreted Acres



114°43'30"W 114°43'W 114°42'30"W 114°42'W 114°41'30"W 114°41'W 114°40'30"W 114°40'W 114°39'30"W 114°39'W 114°38'30"W 114°38'W 114°37'30"W 114°37'W 114°36'30"W 114°36'W 114°35'30"W 114°35'W 114°34'30"W 114°34'W 114°33'30"W 114°33'W

- ### Legend
- IR Isolated Heat
 - ▭ Burn Perimeter
 - ▨ IR Intense Heat
 - ▩ IR Scattered Heat

Scale: 1:50,000
Projection: WGS 1984
Produced by: Owyhee Air Research, LLC
IR Interpreter: C. Merriman
Contact: fire@owyheear.com (208) 442-5405



Copyright © 2013 National Geographic Society

