

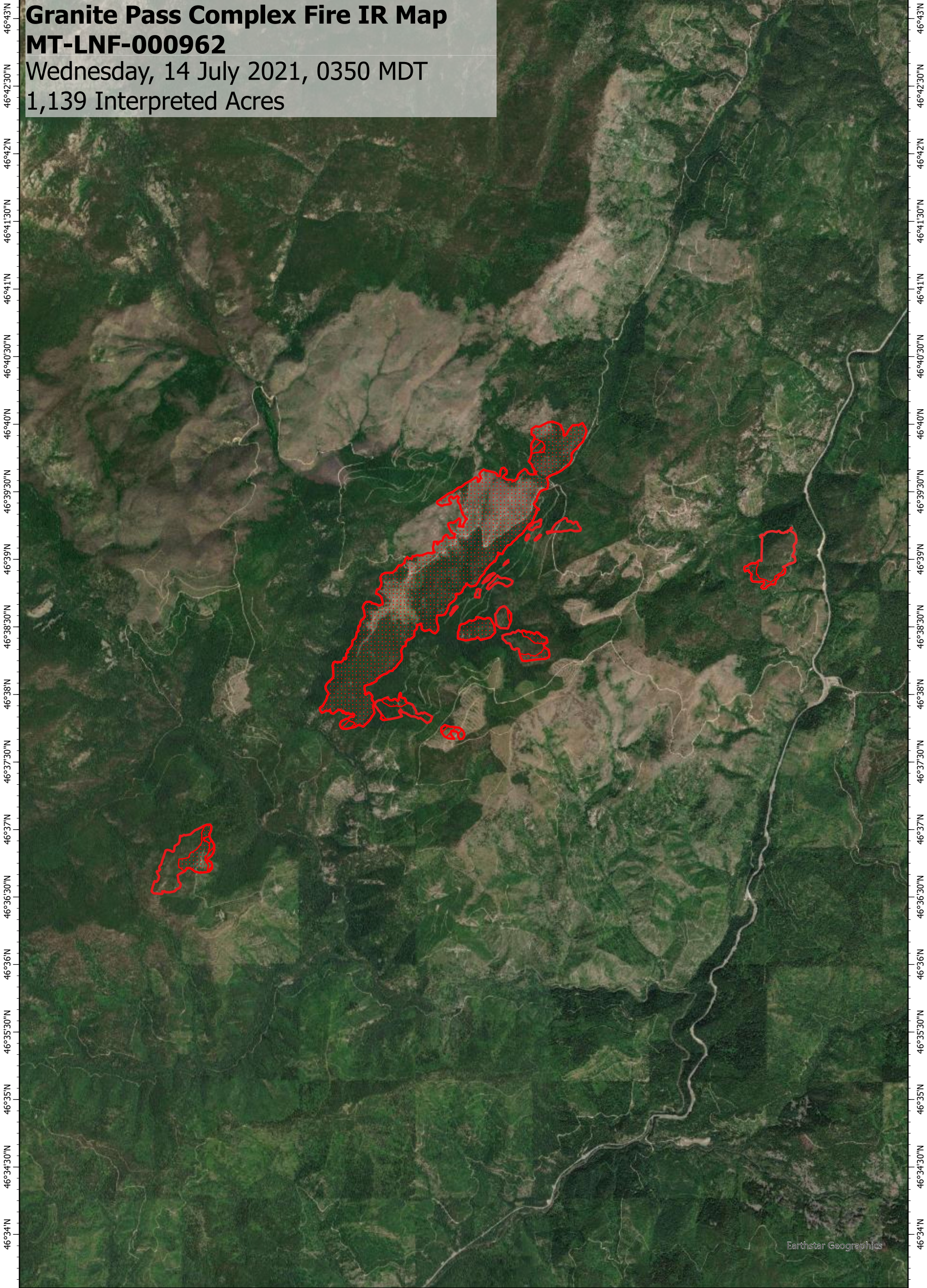
114°43'W 114°42'30"W 114°42'W 114°41'30"W 114°41'W 114°40'30"W 114°40'W 114°39'30"W 114°39'W 114°38'30"W 114°38'W 114°37'30"W 114°37'W 114°36'30"W 114°36'W 114°35'30"W 114°35'W 114°34'30"W 114°34'W

Granite Pass Complex Fire IR Map

MT-LNF-000962

Wednesday, 14 July 2021, 0350 MDT




1,139 Interpreted Acres



Earthstar Geographics

114°43'W 114°42'30"W 114°42'W 114°41'30"W 114°41'W 114°40'30"W 114°40'W 114°39'30"W 114°39'W 114°38'30"W 114°38'W 114°37'30"W 114°37'W 114°36'30"W 114°36'W 114°35'30"W 114°35'W 114°34'30"W 114°34'W

Legend

-  Intense Heat
-  Scattered Heat
-  Burn Perimeter

Scale: 1:70,000

Projection: WGS 1984

Produced by: Owyhee Air Research, LLC

IR Interpreter: C. Merriman

Contact: fire@owyheear.com (208) 442-5405

