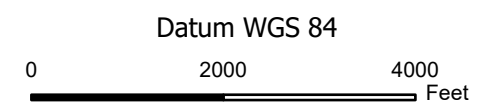


- Active Fire - Uncontrolled Spot Fire or Fire Front
- Creeping Fire - Smoker, 12" Flame Length or Less
- Hot Spot - Significant Priority
- Hot Spot - Moderate Priority



Granite Pass Complex

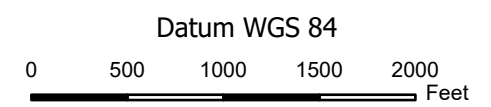
MT-LNF-000962

Infrared Map - BM-Hill Fire
 Infrared Data Captured on 20210726 @ 1100





- Active Fire - Uncontrolled Spot Fire or Fire Front
- Creeping Fire - Smoker, 12" Flame Length or Less
- Hot Spot - Significant Priority
- Hot Spot - Moderate Priority

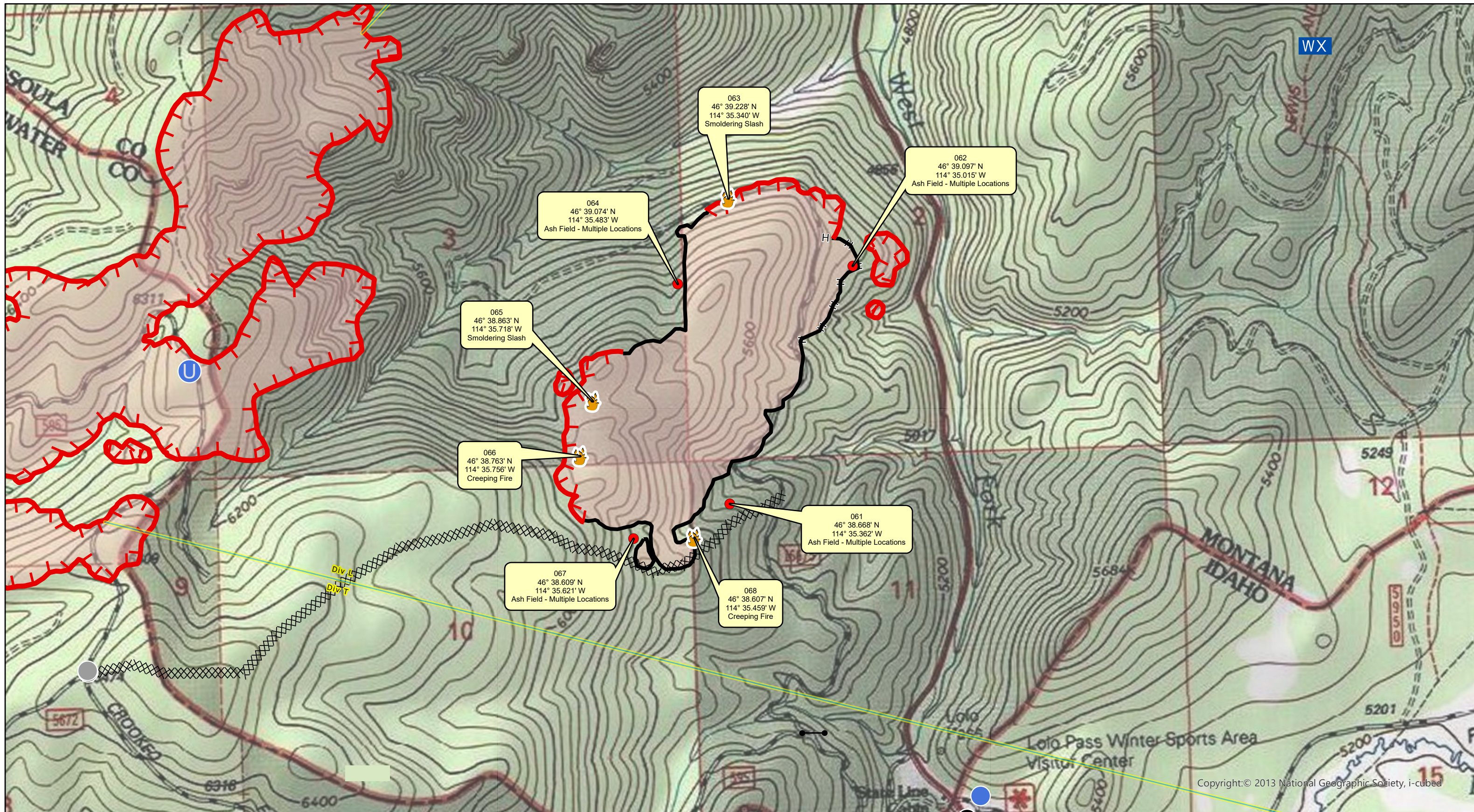


Granite Pass Complex

MT-LNF-000962

Infrared Map - Shotgun Fire
Infrared Data Captured on 20210726 @ 1100









www.VETSresponse.com
805.218-9646

VETERAN'S EMERGENCY TECHNICAL SERVICES
VETS
Cost Effective Infrared

Setting the Standards Since 1980
Aspen Helicopters INC.
www.aspenhelo.com
805.985-5416



INFRARED MAP LEGEND

-  Hot Spot - Moderate Priority (Heat above 200°, Little Vegetation in Vicinity)
-  Hot Spot - Significant Priority (Heat above 200°, Unburned Vegetation in Vicinity)
-  Creeping Fire - Smoker, 12" Flame Lengths or Less
-  Active Fire - Uncontained Spot Fire or Fire Front

GPS Coordinates are in Degrees & Decimal Minutes (DD MM.mmmm')

Datum is WGS 84 (unless otherwise noted on map) Ex. N 37° 44.575'
W -119° 32.101'

Date and Time is when the intelligence was gathered

Heat Sources are normally acquired within a 400 foot strip, 200 feet inside and 200 feet outside the fire line or fire front (wider strips are flown as necessary and are labeled on infrared map).

LIMITS TO INFRARED AND GPS INFORMATION

Under the best conditions heat sources less than 4 to 6 inches in diameter are inconsistent.

Heat sources under heavy canopy or in large rock piles are difficult to verify.

Accuracy of positive identification of heat sources is 90%

Accuracy of negative identification of heat sources is 10% to 20%. (Depending on canopy).

Accuracy of GPS coordinates is within 50 feet, 90% of the time.

Infrared Labeling Details:

