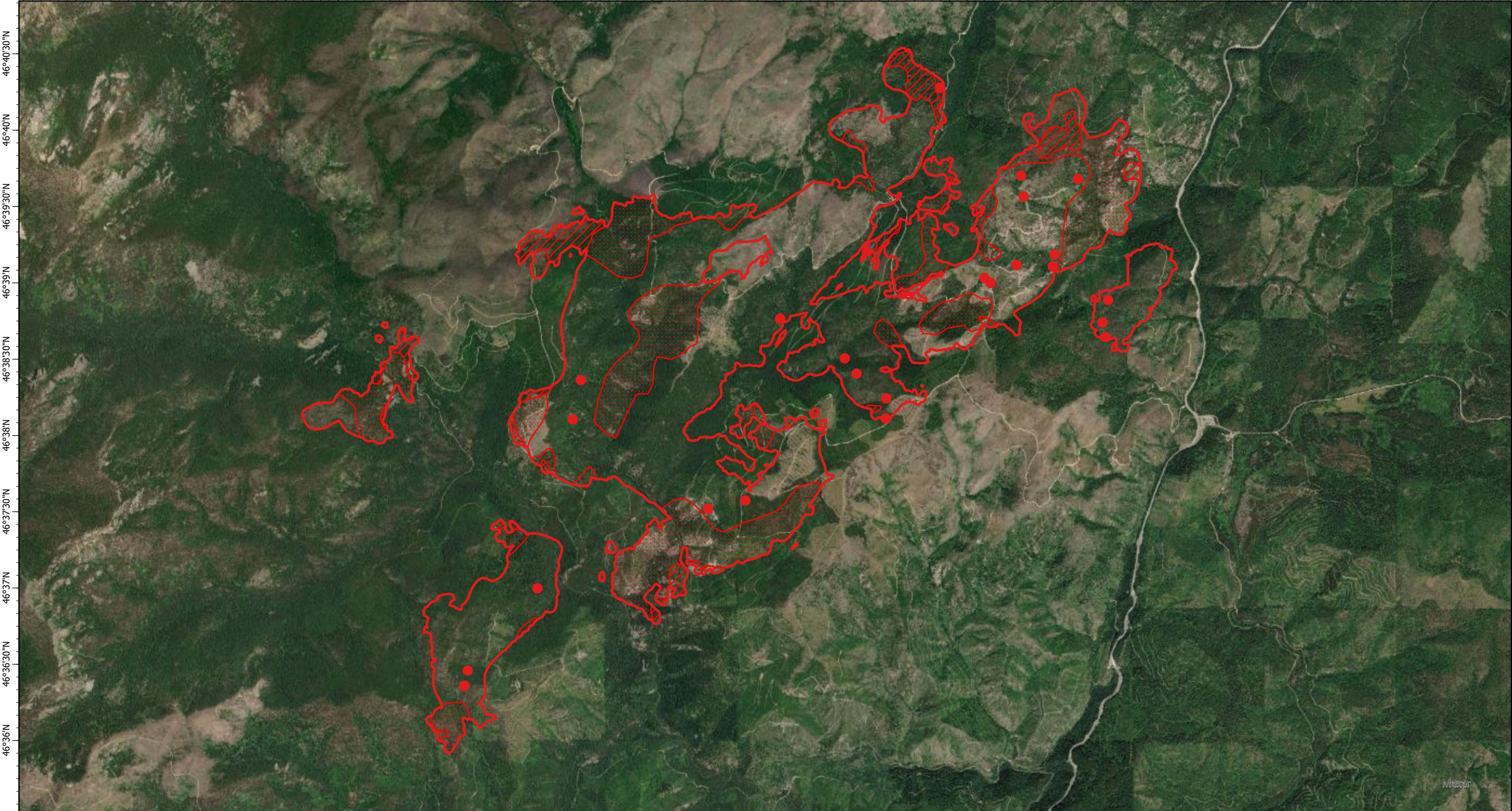


114°46'W 114°45'30"W 114°45'W 114°44'30"W 114°44'W 114°43'30"W 114°43'W 114°42'30"W 114°42'W 114°41'30"W 114°41'W 114°40'30"W 114°40'W 114°39'30"W 114°39'W 114°38'30"W 114°38'W 114°37'30"W 114°37'W 114°36'30"W 114°36'W 114°35'30"W 114°35'W 114°34'30"W 114°34'W 114°33'30"W 114°33'W 114°32'30"W 114°32'W



114°46'W 114°45'30"W 114°45'W 114°44'30"W 114°44'W 114°43'30"W 114°43'W 114°42'30"W 114°42'W 114°41'30"W 114°41'W 114°40'30"W 114°40'W 114°39'30"W 114°39'W 114°38'30"W 114°38'W 114°37'30"W 114°37'W 114°36'30"W 114°36'W 114°35'30"W 114°35'W 114°34'30"W 114°34'W 114°33'30"W 114°33'W 114°32'30"W 114°32'W

Granite Pass Complex Fire IR Map
MT-LNF-000962

Sunday, 02 August 2021, 0045 PDT
5,739 Interpreted Acres

Scale: 1:65,000
Projection: WGS 1984
Produced by: Owyhee Air Research, LLC
IR Interpreter: C. Holley
Contact: fire@owyheear.com (208) 442-5405

Legend

- Isolated Heat
- Burn Perimeter
- Intense Heat
- Scattered Heat



Maxar