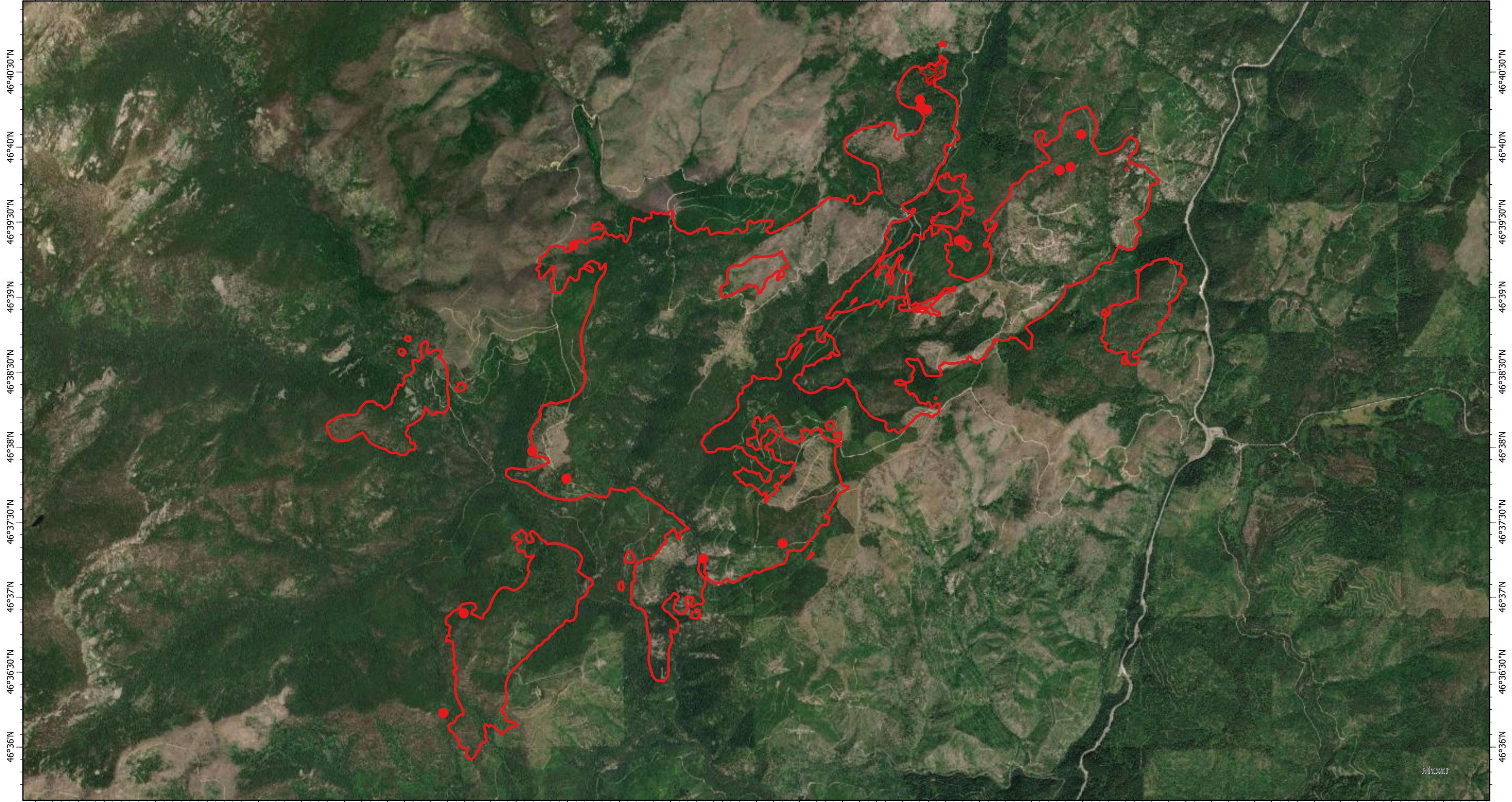


114°46'W 114°45'30"W 114°45'W 114°44'30"W 114°44'W 114°43'30"W 114°43'W 114°42'30"W 114°42'W 114°41'30"W 114°41'W 114°40'30"W 114°40'W 114°39'30"W 114°39'W 114°38'30"W 114°38'W 114°37'30"W 114°37'W 114°36'30"W 114°36'W 114°35'30"W 114°35'W 114°34'30"W 114°34'W 114°33'30"W 114°33'W 114°32'30"W



114°46'W 114°45'30"W 114°45'W 114°44'30"W 114°44'W 114°43'30"W 114°43'W 114°42'30"W 114°42'W 114°41'30"W 114°41'W 114°40'30"W 114°40'W 114°39'30"W 114°39'W 114°38'30"W 114°38'W 114°37'30"W 114°37'W 114°36'30"W 114°36'W 114°35'30"W 114°35'W 114°34'30"W 114°34'W 114°33'30"W 114°33'W 114°32'30"W

**Granite Pass Complex Fire IR Map**  
**MT-LNF-000962**  
15 August 2021, 2329 PDT  
5,911 Interpreted Acres

Scale: 1:65,000  
Projection: WGS 1984  
Produced by: Owyhee Air Research, LLC  
IR Interpreter: C. Holley  
Contact: fire@owyheear.com (208) 442-5405

**Legend**  
● Isolated Heat  
□ Burn Perimeter  
▨ Scattered Heat  
▩ Intense Heat

