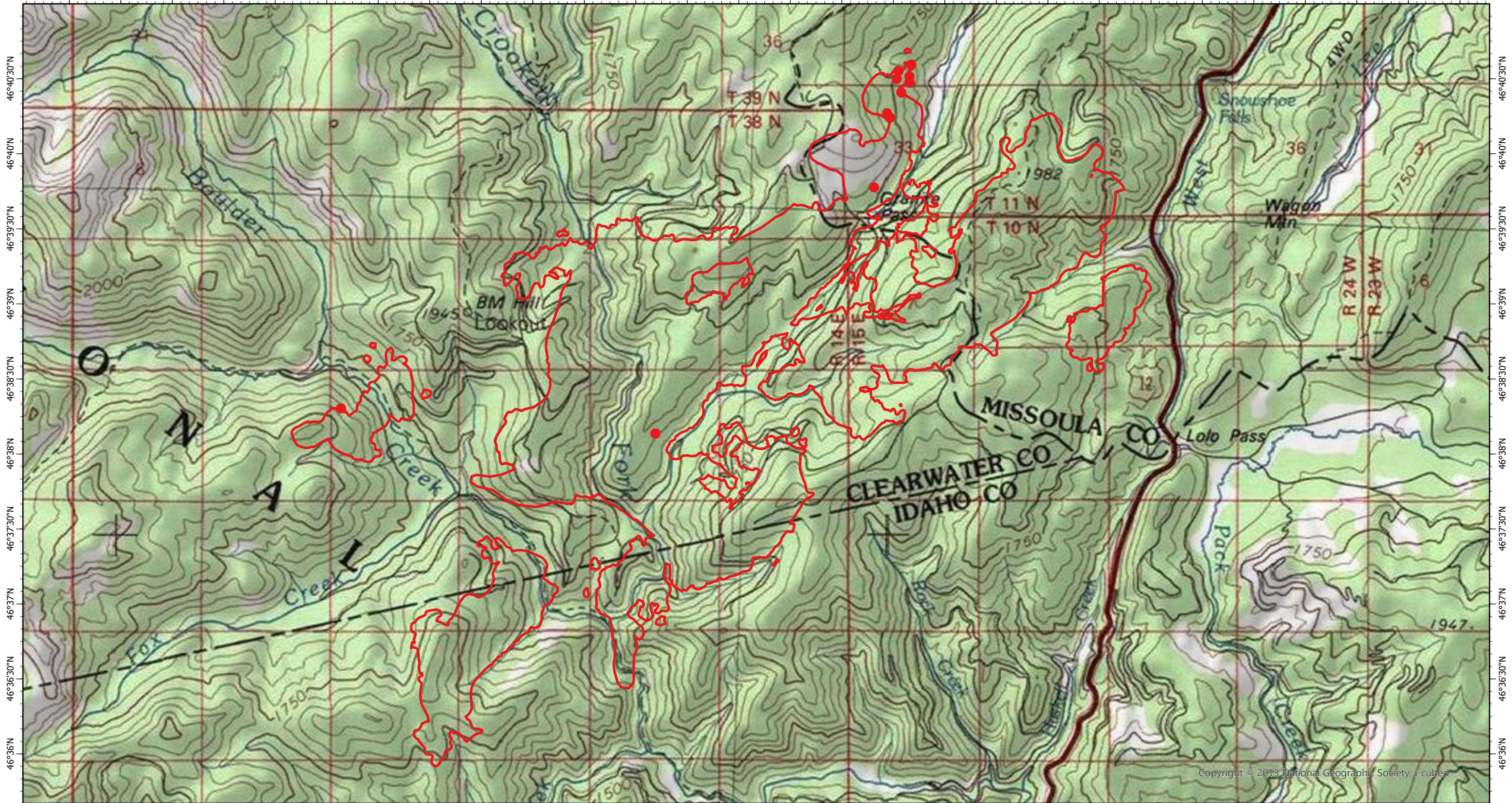


114°45'30"W 114°45"W 114°44'30"W 114°44"W 114°43'30"W 114°43"W 114°42'30"W 114°42"W 114°41'30"W 114°41"W 114°40'30"W 114°40"W 114°39'30"W 114°39"W 114°38'30"W 114°38"W 114°37'30"W 114°37"W 114°36'30"W 114°36"W 114°35'30"W 114°35"W 114°34'30"W 114°34"W 114°33'30"W 114°33"W 114°32'30"W 114°32"W



Copyright: © 2013 National Geographic Society, i-cubed

114°45'30"W 114°45"W 114°44'30"W 114°44"W 114°43'30"W 114°43"W 114°42'30"W 114°42"W 114°41'30"W 114°41"W 114°40'30"W 114°40"W 114°39'30"W 114°39"W 114°38'30"W 114°38"W 114°37'30"W 114°37"W 114°36'30"W 114°36"W 114°35'30"W 114°35"W 114°34'30"W 114°34"W 114°33'30"W 114°33"W 114°32'30"W 114°32"W

**Granite Pass Complex Fire IR Map**  
**MT-LNF-000962**

24 August 2021, 2116 MDT  
 5,910 Interpreted Acres

Scale: 1:65,000  
 Projection: WGS 1984  
 Produced by: Owyhee Air Research, LLC  
 IR Interpreter: D. Merriman  
 Contact: fire@owyheear.com (208) 442-5405

- Legend**
- Isolated Heat
  - ▭ Burn Perimeter

