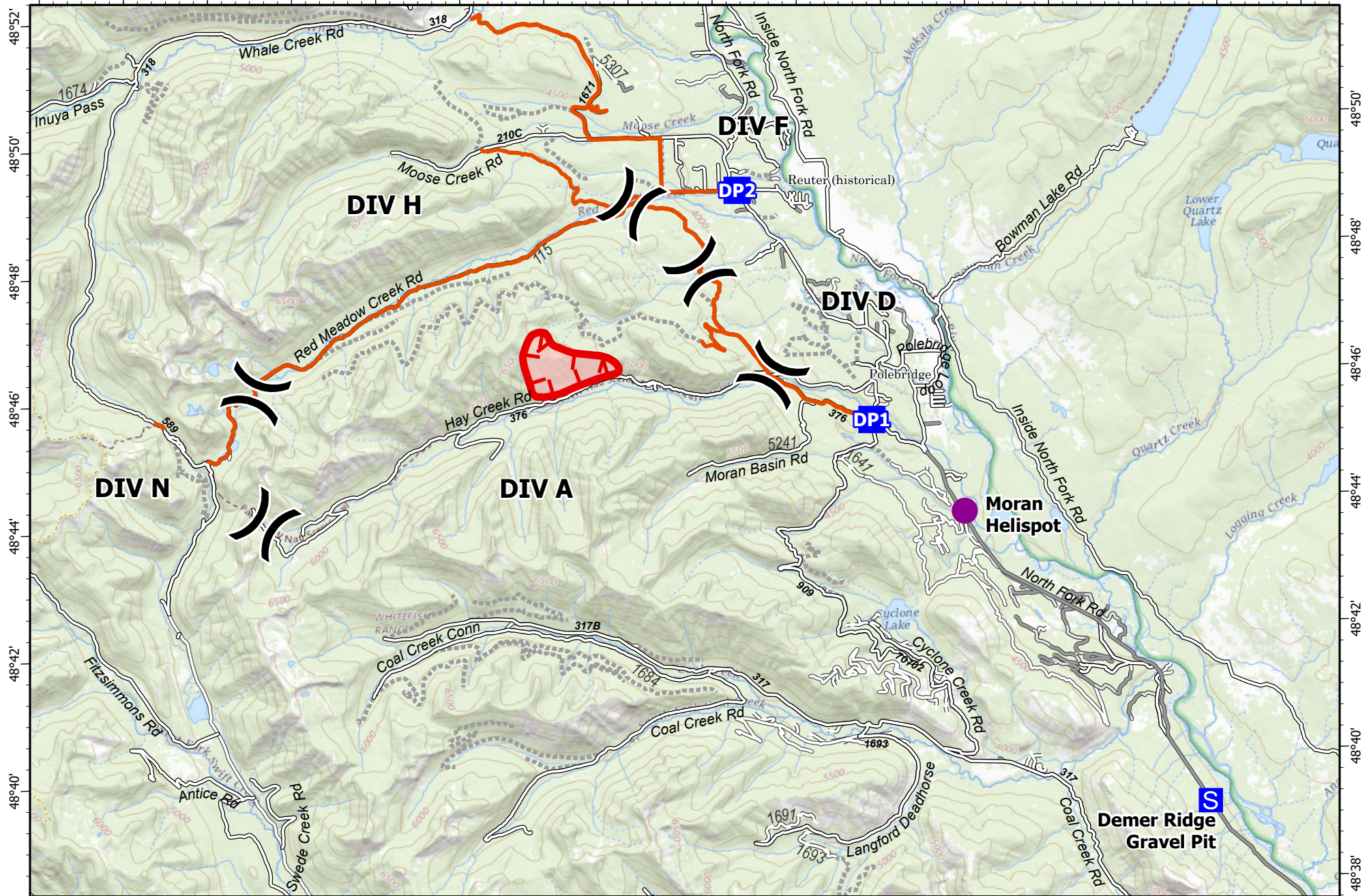


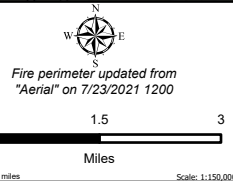
-114°38' -114°36' -114°34' -114°32' -114°30' -114°28' -114°26' -114°24' -114°22' -114°20' -114°18' -114°16' -114°14' -114°12' -114°10' -114°8'



48°52'
48°50'
48°48'
48°46'
48°44'
48°42'
48°40'
48°38'

48°50'
48°48'
48°46'
48°44'
48°42'
48°40'
48°38'

IAP
Hay Creek
MTFNF000668
619 acres
07/24/2021



- Wildfire Daily Fire Perimeter
- Fire Edge
- Forest Service Roads Open
- Roads
- 2018 Fuel Breaks
- Gravel Road
- Paved Roads
- Dirt Road
- Unimproved Road
- Dirt (Not Paved)
- Forest Service Roads Closed
- Helispot
- ┌ Division Break
- Drop Point
- Staging Area



Remote Incident Support Team
7/23/2021 1829
North American 1983 Datum,
LatLong Grid

IAP