

M.A.P. 1 - Evacuation Warning

Condition:
Fire reaches MAP1. Threatens to burn on North aspects.

Action:
Pre Evacuation Notice - Put public on standby for evacuation.
Contact Flathead County Emergency Services.
Consider defensive firing operations using existing fuel breaks, cutting units, and roads.
Implement more public meetings.

M.A.P. 2 - Evacuation Order

Condition:
Fire Reaches MAP2. Fire reaches more horizontally continuous fuels and approaches valley bottom.

Action:
Evacuation Notice.
Notify Flathead County Emergency Services. Assess the need to recommend evacuation of the Moose Creek Road and the North Fork Road residences/business.
Evaluate the need to enact a North Fork of the Flathead River and River access closure. Coordinate with the county on evacuations, may include all developed sites, wild and scenic river, all rental cabins, and everything north of Red Meadows Road.
Evaluate suppression actions utilizing existing roads and equipment lines.
Evaluate burning operations to reduce unburned fuel between main fire and values at risk.
Notify Glacier National Park. Glacier National Park may begin visitor evacuations.
Reconsider new Planning Area and Decision with Glacier National Park.

M.A.P. 3 - Red Meadow Rd

Condition:
Fire moves north of red Meadow Road.

Actions:
Evacuate North Fork Road up to the Canadian Border.
Notify Partners of Fire Spread.
Assess need to re-evaluate closure order.
Re-evaluate suppression tactics.

M.A.P. 4 - Hay Creek

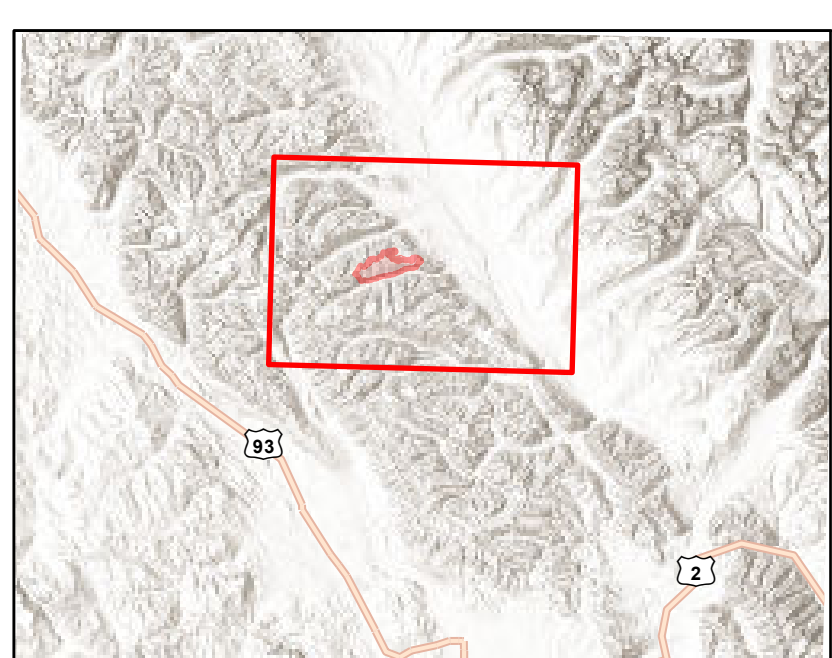
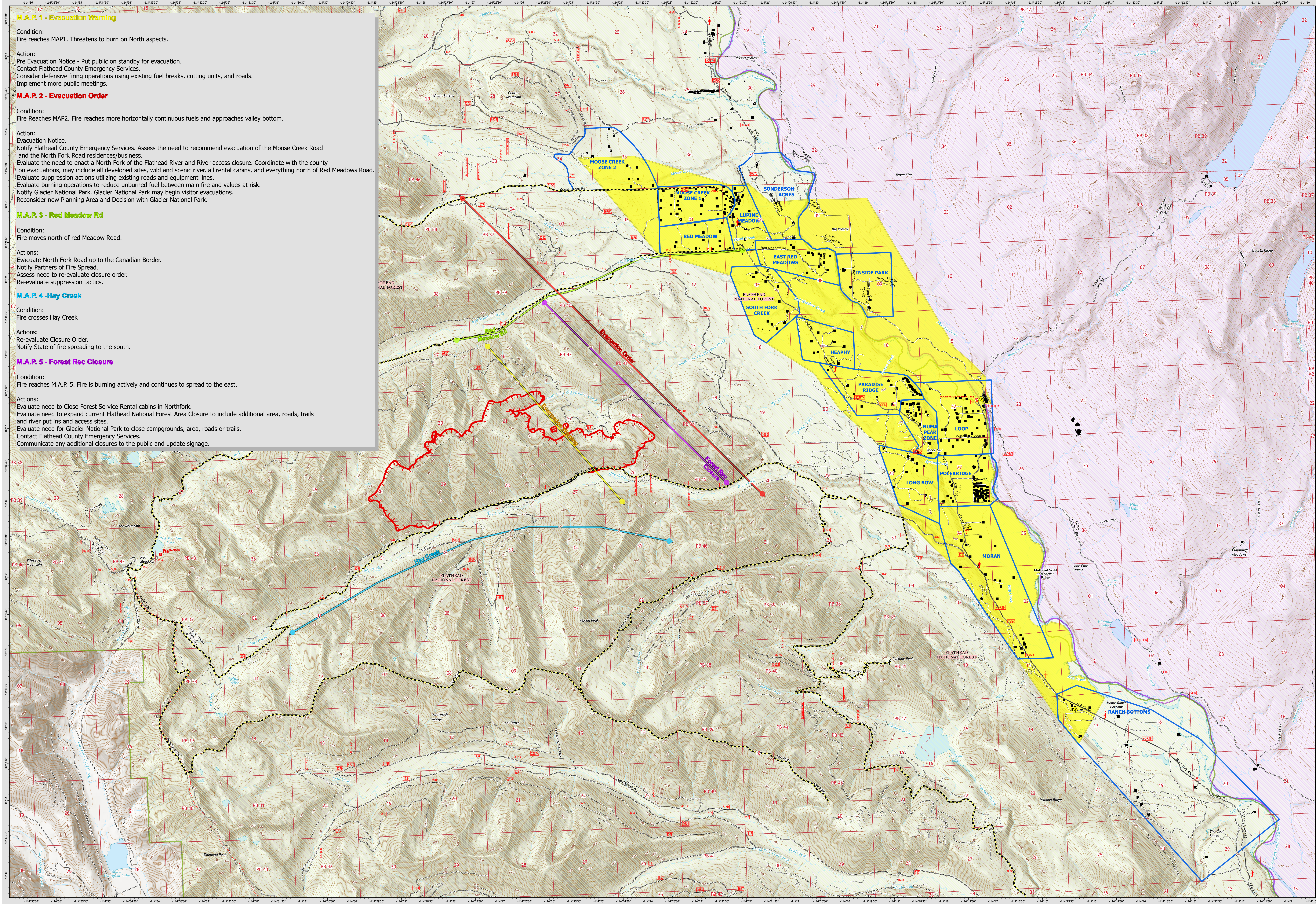
Condition:
Fire crosses Hay Creek

Actions:
Re-evaluate Closure Order.
Notify State of fire spreading to the south.

M.A.P. 5 - Forest Rec Closure

Condition:
Fire reaches M.A.P. 5. Fire is burning actively and continues to spread to the east.

Actions:
Evaluate need to Close Forest Service Rental cabins in Northfork.
Evaluate need to expand current Flathead National Forest Area Closure to include additional area, roads, trails and river put ins and access sites.
Evaluate need for Glacier National Park to close campgrounds, area, roads or trails.
Contact Flathead County Emergency Services.
Communicate any additional closures to the public and update signage.



- Safety Zone
- M.A.P. 1 - Evacuation Warning
- M.A.P. 2 - Evacuation Order
- M.A.P. 3 - Red Meadow Rd
- M.A.P. 4 - Hay Creek
- M.A.P. 5 - Forest Rec Closure
- Fire Edge
- Contained Line
- Road Closure
- Structure
- Evacuation Zones
- Evacuation Warning
- Forest Service
- National Park Service
- County

M.A.P. and Evacuation

Hay Creek
MT-FNF-000668
8/5/2021

Map Updated: 8/4/2021 11:22