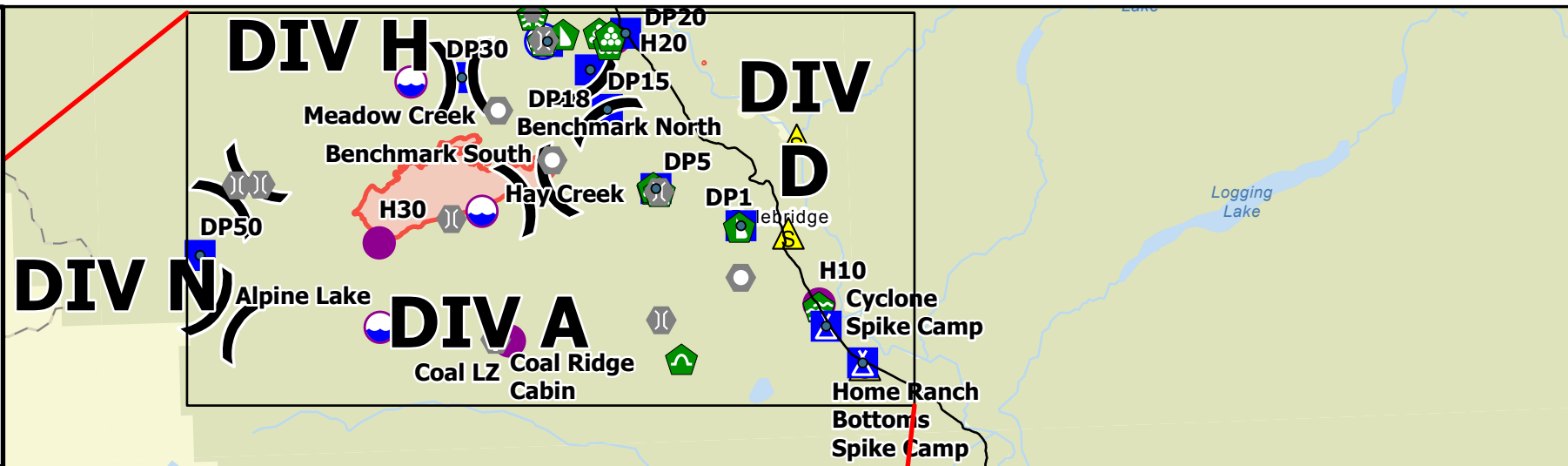


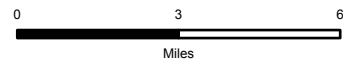
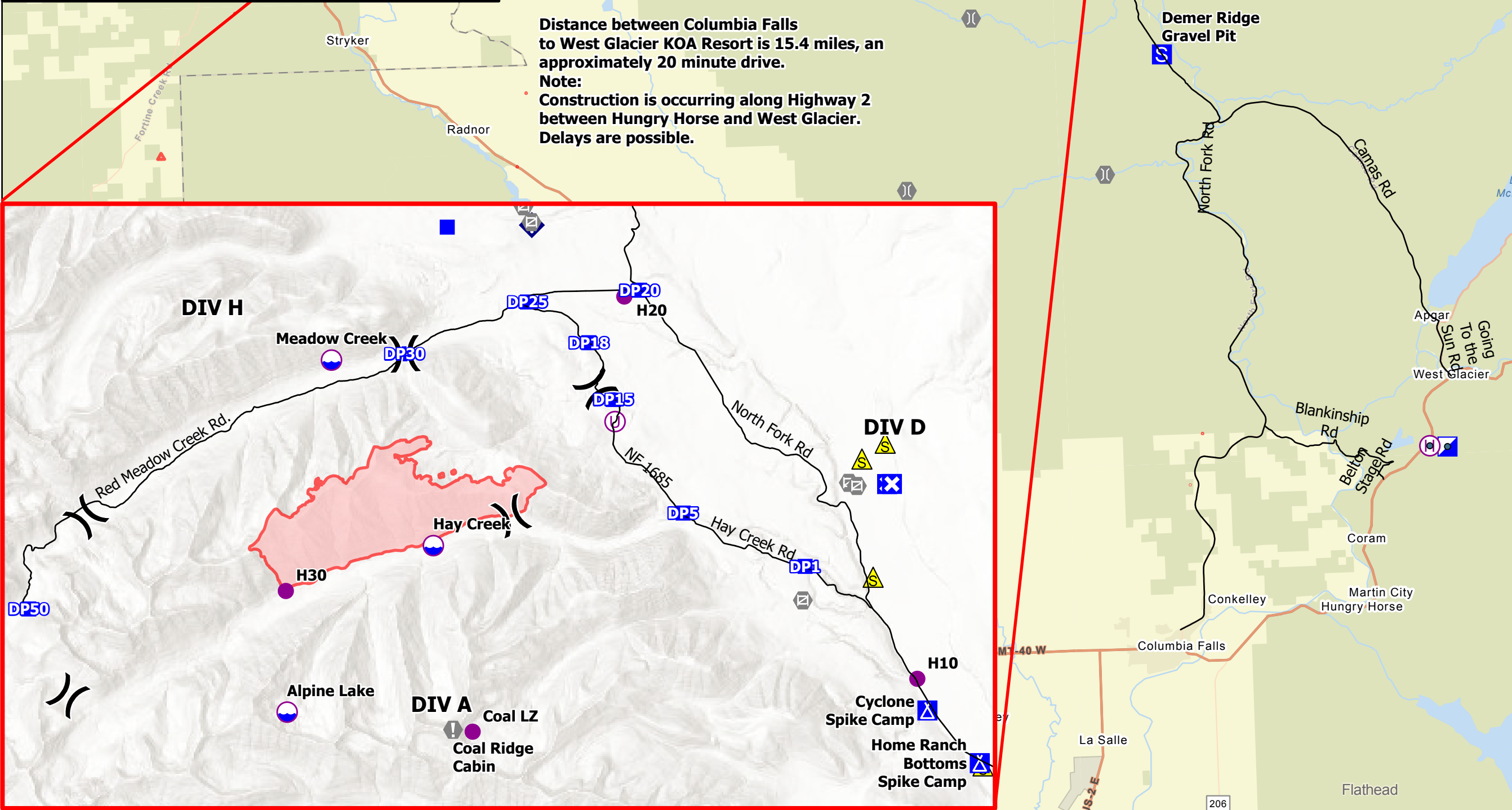
Transportation Hay Creek MT-FNF-000668

- Dip Site
- Helispot
- Helibase
- Division Break
- Incident Command Post
- Drop Point
- Camp
- Staging Area
- Value at Risk
- Other
- Landmark
- Bridge
- Water Development or Draft Site
- Stream Crossing
- Landing or Log Deck
- Dozer Push
- Culvert
- Safety Zone
- Water Source
- Wildfire Daily Fire Perimeter
- Trans Local rds

FeatureCat	Label	LatWGS84_D	LongWGS84
Incident Command Post	ICP KOA	48° 27.695' N	113° 59.169' W
Helibase	Helibase KOA	48° 27.737' N	113° 59.928' W
Drop Point	DP5	48° 46.160' N	114° 20.977' W
Camp	Cyclone Spike Camp	48° 43.499' N	114° 16.251' W
Camp	Home Ranch Bottoms Spike Camp	48° 42.795' N	114° 15.266' W
Drop Point	DP1	48° 45.416' N	114° 18.560' W
Drop Point	DP15	48° 47.658' N	114° 22.517' W
Drop Point	DP18	48° 48.402' N	114° 22.615' W
Drop Point	DP20	48° 49.057' N	114° 21.587' W
Drop Point	DP25	48° 48.955' N	114° 23.789' W
Drop Point	DP30	48° 48.340' N	114° 23.971' W
Drop Point	DP50	48° 45.204' N	114° 33.739' W



Distance between Columbia Falls to West Glacier KOA Resort is 15.4 miles, an approximately 20 minute drive.
Note:
 Construction is occurring along Highway 2 between Hungry Horse and West Glacier. Delays are possible.



1 inch equals miles Scale: 1:226,241