

112°21'0"W 112°20'0"W 112°19'0"W 112°18'0"W 112°17'0"W 112°16'0"W

**Haystack**  
MT-BDF-006341  
Infrared Map - NIROPS  
Infrared Map for 9/10/2021  
Imagery Acquired: 9/09/2021 @ 2136 MDT  
IRIN: Trisha Boll (t)/Elise Bowne  
Interpreted Acres: 1,394 (+1,164 )  
UTM Zone 12N NAD83

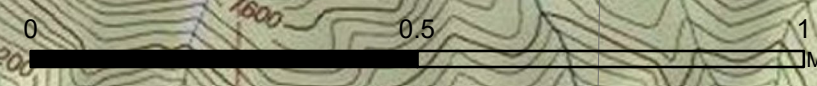
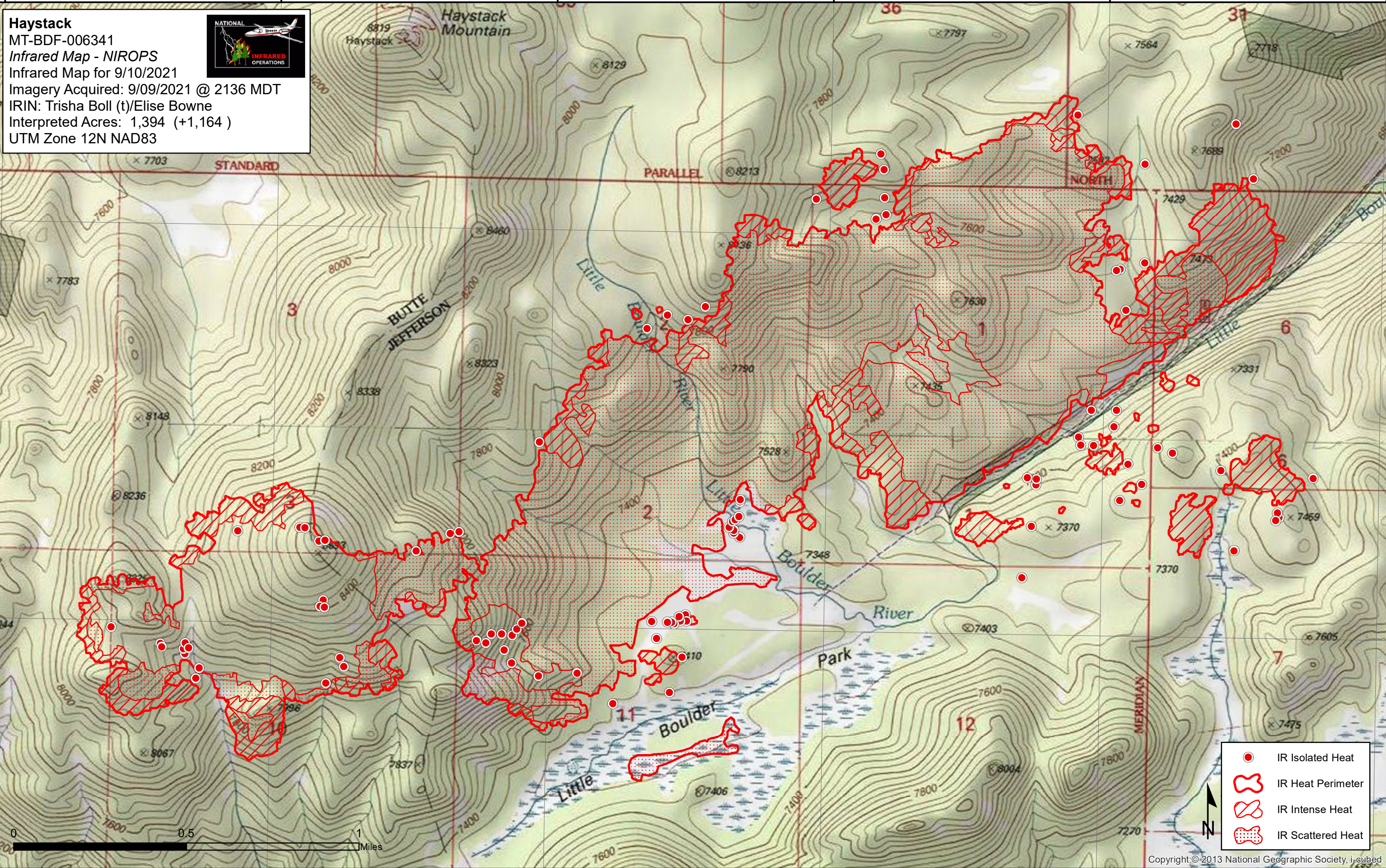






46°8'0"N

46°8'0"N

46°7'0"N

46°7'0"N



-  IR Isolated Heat
-  IR Heat Perimeter
-  IR Intense Heat
-  IR Scattered Heat



Copyright © 2013 National Geographic Society, i-cubed

112°20'0"W 112°19'0"W 112°18'0"W 112°17'0"W 112°16'0"W