

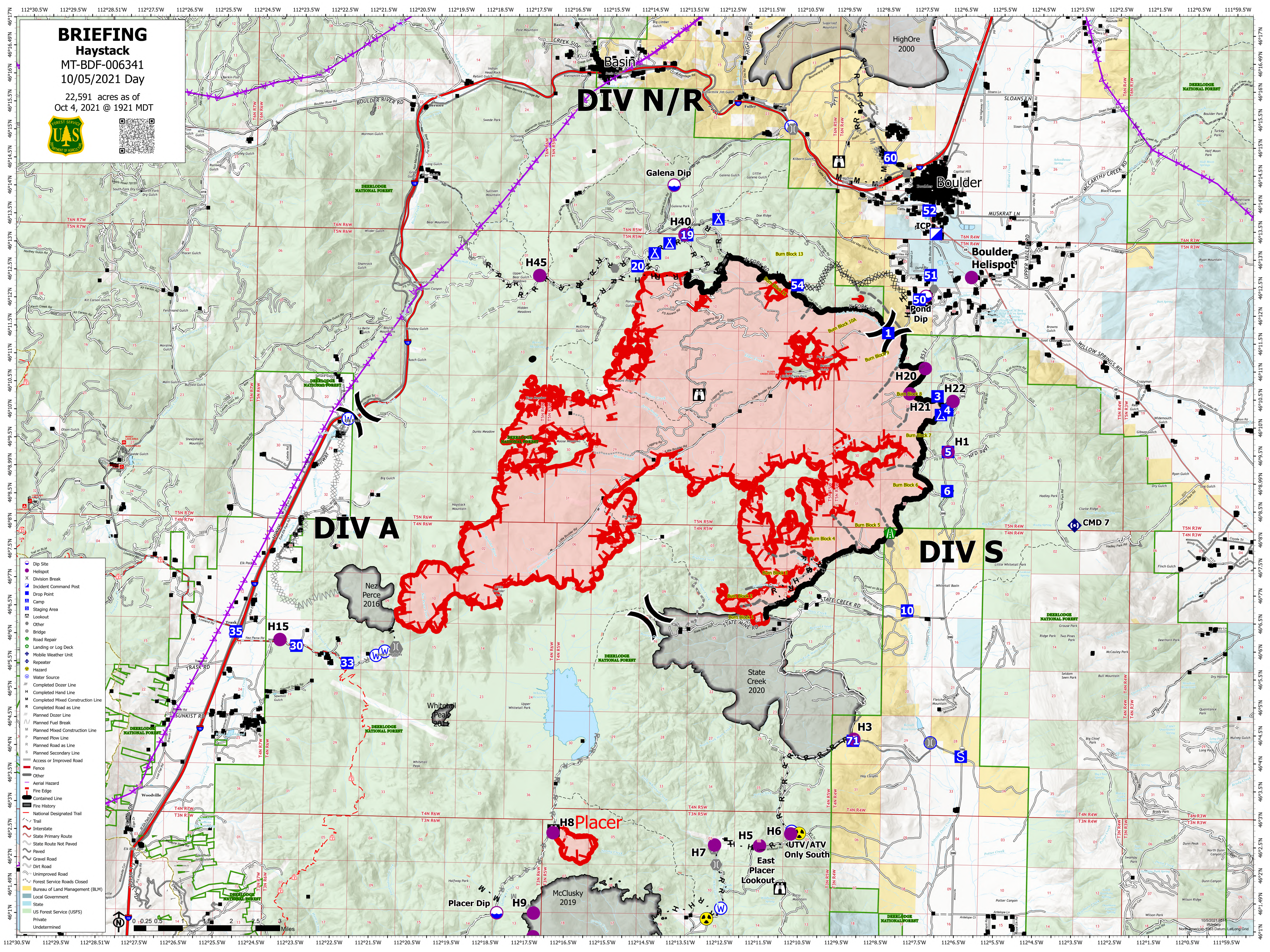
BRIEFING

Haystack

MT-BDF-006341

10/05/2021 Day

22,591 acres as of
Oct 4, 2021 @ 1921 MDT

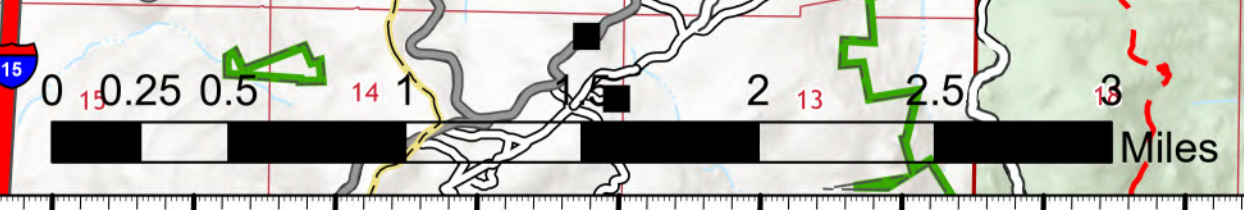


DIV A

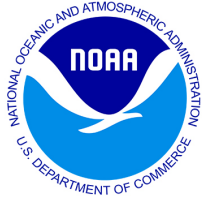
DIV N/R

DIV S

- Dip Site
- Helispot
- Division Break
- Incident Command Post
- Drop Point
- Camp
- Staging Area
- Lookout
- Other
- Bridge
- Road Repair
- Landing or Log Deck
- Mobile Weather Unit
- Repeater
- Hazard
- Water Source
- Completed Dozer Line
- Completed Hand Line
- Completed Mixed Construction Line
- Completed Road as Line
- Planned Dozer Line
- Planned Fuel Break
- Planned Mixed Construction Line
- Planned Plow Line
- Planned Road as Line
- Planned Secondary Line
- Access or Improved Road
- Fence
- Other
- Aerial Hazard
- Fire Edge
- Contained Line
- Fire History
- National Designated Trail
- Trail
- Interstate
- State Primary Route
- State Route Not Paved
- Paved
- Gravel Road
- Dirt Road
- Unimproved Road
- Forest Service Roads Closed
- Bureau of Land Management (BLM)
- Local Government
- State
- US Forest Service (USFS)
- Private
- Undetermined



10/5/2021 05:15
1921 MDT
LattLong Grid



Haystack Fire General Weather Outlook

For planning purposes only, see the IAP for the official forecast



Forecast made Monday, 10/04/21 - Alex Boothe, IMET(t)

	Conditions	Tue	Wed	Thu	Fri	Sat	Sun
		5-Oct	6-Oct	7-Oct	8-Oct	9-Oct	10-Oct
Mid Slope	Clouds, Max (%)	20	70	80	70	30	20
	Temp, Max (°F)	74	64	53	50	50	53
	Temp, Min (°F)	50	44	41	39	39	34
	RH, Max (%)	28	75	75	70	55	60
	RH, Min (%)	10	36	57	53	36	33
	20' Wind, Max (mph)	10	8	6	6	8	9
	Haines Index, Max	6	3	2	2	2	2
Ridges	20' Wind, Max (mph)	12	10	7	6	9	10
	Wind Dir, Min	SSW	SW	SSW	W	W	SW
	20' Gusts, Max (mph)	23	20	11	10	19	21
	Precip Chnc (%)	0	25	80	55	20	25
	CWR (%)	0	0	65	25	0	0

KEY:

Conditions Favoring Low to Moderate Fire Behavior

Conditions Favoring High Fire Behavior

Conditions Favoring Extreme Fire Behavior

6 or more EXTREME blocks in a day = Critical Weather Day