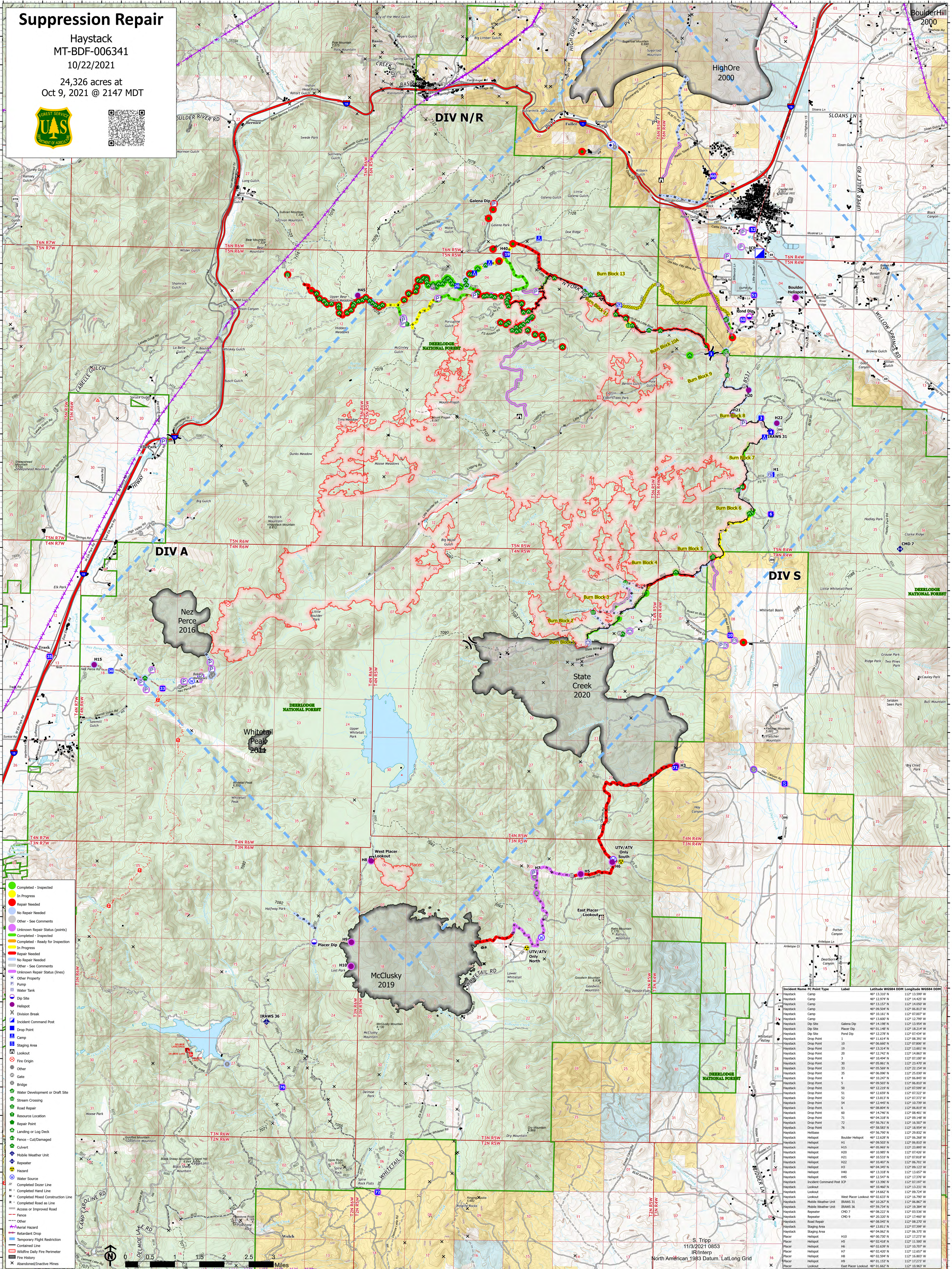


# Suppression Repair

Haystack  
MT-BDF-006341  
10/22/2021

24,326 acres at  
Oct 9, 2021 @ 2147 MDT



- Completed - Inspected
- In Progress
- Repair Needed
- No Repair Needed
- Other - See Comments
- Unknown Repair Status (points)
- Completed - Inspected
- Completed - Ready for Inspection
- In Progress
- Repair Needed
- No Repair Needed
- Other - See Comments
- Unknown Repair Status (lines)
- Other Property
- Pump
- Water Tank
- Dip Site
- Helispot
- Division Break
- Incident Command Post
- Drop Point
- Camp
- Staging Area
- Lookout
- Fire Origin
- Other
- Gate
- Bridge
- Water Development or Draft Site
- Stream Crossing
- Road Repair
- Resource Location
- Repair Point
- Landing or Log Deck
- Fence - Out/Damaged
- Culvert
- Mobile Weather Unit
- Repeater
- Hazard
- Water Source
- Completed Road as Line
- Completed Hand Construction Line
- Completed Mixed Construction Line
- Completed Road as Line
- Access or Improved Road
- Fence
- Other
- Aerial Hazard
- Retardant Drop
- Temporary Flight Restriction
- Continental Line
- Wildfire Daily Fire Perimeter
- Fire History
- Abandoned/Inactive Mines

Incident Name	IC Point Type	Label	Latitude WGS84	Longitude WGS84	DDM
Haystack	Camp	40	13.310 N	112 13.599 W	
Haystack	Camp	40	12.974 N	112 14.425 W	
Haystack	Camp	40	13.157 N	112 15.050 W	
Haystack	Camp	40	09.506 N	112 06.813 W	
Haystack	Camp	40	10.161 N	112 07.007 W	
Haystack	Camp	40	13.607 N	112 12.795 W	
Haystack	Dip Site	Galena Dip	40 14.198 N	112 13.954 W	
Haystack	Dip Site	Placer Dip	40 01.148 N	112 18.214 W	
Haystack	Drop Point	1	40 11.614 N	112 08.391 W	
Haystack	Drop Point	10	40 06.660 N	112 07.800 W	
Haystack	Drop Point	19	40 13.316 N	112 12.022 W	
Haystack	Drop Point	20	40 12.742 N	112 14.863 W	
Haystack	Drop Point	3	40 10.494 N	112 07.100 W	
Haystack	Drop Point	33	40 05.537 N	112 12.795 W	
Haystack	Drop Point	33	40 05.569 N	112 22.154 W	
Haystack	Drop Point	35	40 06.090 N	112 25.030 W	
Haystack	Drop Point	4	40 13.276 N	112 07.436 W	
Haystack	Drop Point	5	40 09.502 N	112 06.810 W	
Haystack	Drop Point	50	40 12.219 N	112 07.599 W	
Haystack	Drop Point	51	40 12.659 N	112 07.322 W	
Haystack	Drop Point	52	40 13.813 N	112 07.372 W	
Haystack	Drop Point	54	40 12.445 N	112 10.739 W	
Haystack	Drop Point	6	40 08.926 N	112 06.819 W	
Haystack	Drop Point	40	40 14.450 N	112 08.401 W	
Haystack	Drop Point	71	40 04.318 N	112 09.148 W	
Haystack	Drop Point	72	40 06.761 N	112 16.307 W	
Haystack	Drop Point	26	40 05.683 N	112 18.954 W	
Haystack	Drop Point	45	40 05.700 N	112 28.832 W	
Haystack	Helispot	Boulder Helispot	40 12.620 N	112 06.206 W	
Haystack	Helispot	H11	40 05.065 N	112 06.810 W	
Haystack	Helispot	H15	40 05.065 N	112 23.895 W	
Haystack	Helispot	H20	40 10.985 N	112 07.420 W	
Haystack	Helispot	H22	40 10.537 N	112 12.022 W	
Haystack	Helispot	H22	40 10.407 N	112 06.701 W	
Haystack	Helispot	H3	40 04.345 N	112 09.123 W	
Haystack	Helispot	H40	40 13.218 N	112 12.022 W	
Haystack	Helispot	H45	40 12.547 N	112 17.376 W	
Haystack	Incident Command Post	ICP	40 13.390 N	112 07.197 W	
Haystack	Lookout	West Placer Lookout	40 02.633 N	112 16.790 W	
Haystack	Mobile Weather Unit	BRAWS 31	40 00.500 N	112 12.022 W	
Haystack	Mobile Weather Unit	BRAWS 36	40 59.734 N	112 19.364 W	
Haystack	Repeater	CHD 7	40 08.222 N	112 03.536 W	
Haystack	Repeater	CHD 9	40 20.320 N	112 27.065 W	
Haystack	Road Repair		40 08.045 N	112 08.270 W	
Haystack	Staging Area		40 13.811 N	112 07.399 W	
Haystack	Staging Area		40 04.062 N	112 06.375 W	
Placer	Helispot	H10	40 02.418 N	112 11.500 W	
Placer	Helispot	H6	40 02.639 N	112 10.707 W	
Placer	Helispot	H17	40 02.450 N	112 12.022 W	
Placer	Helispot	H8	40 02.594 N	112 16.803 W	
Placer	Helispot	H9	40 01.157 N	112 17.273 W	
Placer	Lookout	East Placer Lookout	40 05.682 N	112 18.954 W	

S. Tripp  
11/3/2021 0853  
IR/Intero  
North American 1983 Datum, Lat/Long Grid