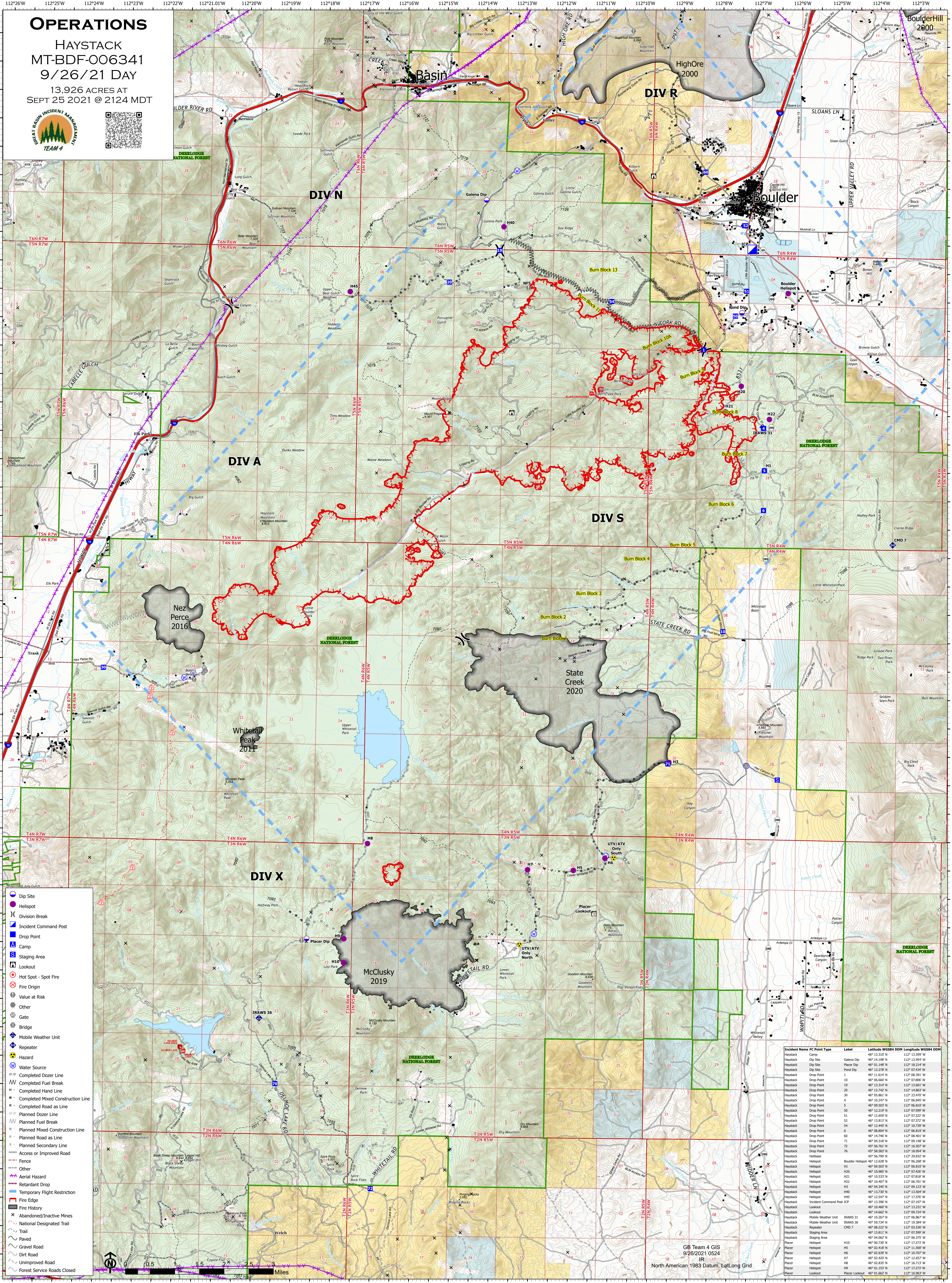


OPERATIONS

HAYSTACK
MT-BDF-006341
9/26/21 DAY
13,926 ACRES AT
SEPT 25 2021 @ 2124 MDT



- Dip Site
- Helispot
- Division Break
- Incident Command Post
- Drop Point
- Camp
- Staging Area
- Lookout
- Hot Spot - Spot Fire
- Fire Origin
- Value at Risk
- Other
- Gate
- Bridge
- Mobile Weather Unit
- Repeater
- Hazard
- Water Source
- Completed Dozer Line
- Completed Fuel Break
- Completed Hand Line
- Completed Mixed Construction Line
- Completed Road as Line
- Planned Dozer Line
- Planned Fuel Break
- Planned Mixed Construction Line
- Planned Road as Line
- Planned Secondary Line
- Access or Improved Road
- Fence
- Other
- Aerial Hazard
- Retardant Drop
- Temporary Flight Restriction
- Fire History
- Fire Edge
- Abandoned/Inactive Mines
- National Designated Trail
- Trail
- Paved
- Gravel Road
- Dirt Road
- Unimproved Road
- Forest Service Roads Closed

Incident Name	FC Point Type	Label	Latitude WGS84 DDM	Longitude WGS84 DDM
Haystack	Camp	Galena Dip	46° 13.317' N	112° 13.999' W
Haystack	Dip Site	Galena Dip	46° 14.198' N	112° 13.954' W
Haystack	Dip Site	Placer Dip	46° 01.148' N	112° 18.214' W
Haystack	Dip Site	Placer Dip	46° 12.278' N	112° 02.614' W
Haystack	Drop Point	1	46° 11.614' N	112° 08.391' W
Haystack	Drop Point	10	46° 06.667' N	112° 07.806' W
Haystack	Drop Point	19	46° 13.214' N	112° 02.332' W
Haystack	Drop Point	20	46° 12.742' N	112° 14.863' W
Haystack	Drop Point	30	46° 05.861' N	112° 23.470' W
Haystack	Drop Point	4	46° 12.847' N	112° 06.845' W
Haystack	Drop Point	5	46° 09.503' N	112° 06.817' W
Haystack	Drop Point	50	46° 12.219' N	112° 07.599' W
Haystack	Drop Point	51	46° 12.659' N	112° 07.322' W
Haystack	Drop Point	52	46° 13.813' N	112° 02.372' W
Haystack	Drop Point	54	46° 12.445' N	112° 10.739' W
Haystack	Drop Point	6	46° 08.804' N	112° 06.819' W
Haystack	Drop Point	60	46° 14.746' N	112° 06.401' W
Haystack	Drop Point	71	46° 04.118' N	112° 09.148' W
Haystack	Drop Point	72	46° 12.547' N	112° 16.507' W
Haystack	Drop Point	76	46° 08.853' N	112° 18.554' W
Haystack	Helispot	H45	45° 56.790' N	112° 29.832' W
Haystack	Helispot	H46	46° 12.628' N	112° 06.268' W
Haystack	Helispot	H1	46° 09.503' N	112° 06.817' W
Haystack	Helispot	H20	46° 10.867' N	112° 02.636' W
Haystack	Helispot	H21	46° 10.533' N	112° 07.818' W
Haystack	Helispot	H22	46° 10.607' N	112° 06.701' W
Haystack	Helispot	H3	46° 04.845' N	112° 06.123' W
Haystack	Helispot	H40	46° 13.730' N	112° 13.504' W
Haystack	Helispot	H45	46° 12.547' N	112° 17.376' W
Haystack	Lookout	IRAWCS 31	46° 13.296' N	112° 18.707' W
Haystack	Lookout	IRAWCS 35	45° 59.734' N	112° 18.384' W
Haystack	Lookout	CHD 7	46° 08.222' N	112° 03.536' W
Haystack	Lookout	IRAWCS 31	46° 14.662' N	112° 09.724' W
Haystack	Mobile Weather Unit	IRAWCS 31	46° 10.257' N	112° 06.867' W
Haystack	Mobile Weather Unit	IRAWCS 35	45° 59.734' N	112° 18.384' W
Haystack	Repeater	CHD 7	46° 08.222' N	112° 03.536' W
Haystack	Staging Area	CHD 7	46° 13.811' N	112° 07.399' W
Haystack	Staging Area	IRAWCS 31	46° 10.257' N	112° 06.867' W
Placer	Helispot	H10	46° 00.730' N	112° 17.273' W
Placer	Helispot	H5	46° 02.418' N	112° 11.500' W
Placer	Helispot	H6	46° 02.539' N	112° 12.707' W
Placer	Helispot	H7	46° 02.402' N	112° 12.657' W
Placer	Helispot	H8	46° 02.833' N	112° 16.713' W
Placer	Helispot	H9	46° 01.153' N	112° 17.273' W
Placer	Lookout	IRAWCS 31	46° 10.257' N	112° 06.867' W

GB Team 4 GIS
9/26/2021 0524
North American 1983 Datum, Lat/Long Grid