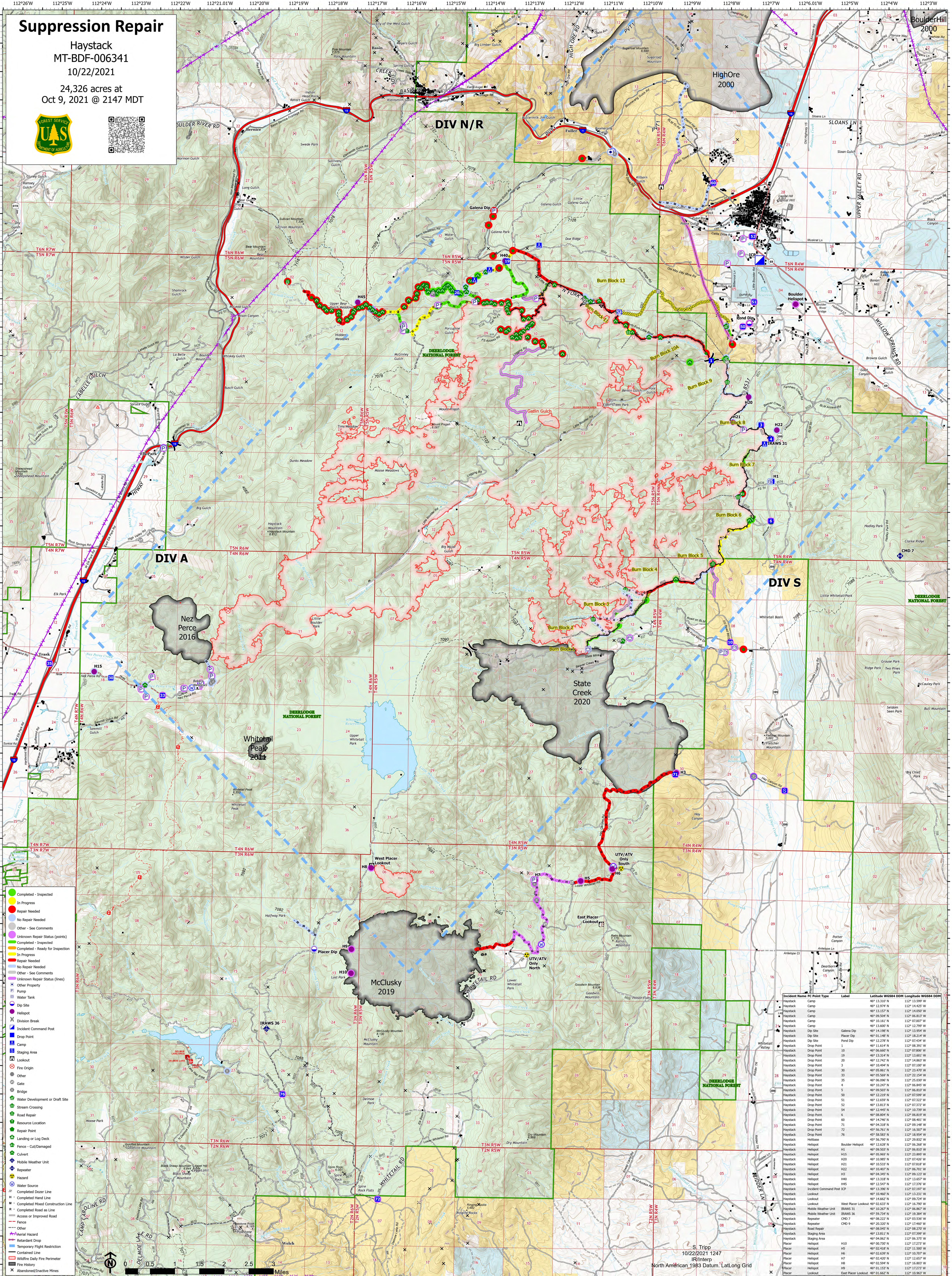


Suppression Repair

Haystack
MT-BDF-006341
10/22/2021

24,326 acres at
Oct 9, 2021 @ 2147 MDT



- Completed - Inspected
- In Progress
- Repair Needed
- No Repair Needed
- Other - See Comments
- Unknown Repair Status (points)
- Completed - Inspected
- Completed - Ready for Inspection
- In Progress
- Repair Needed
- No Repair Needed
- Other - See Comments
- Unknown Repair Status (lines)
- Other Property
- Pump
- Water Tank
- Dip Site
- Helispot
- Division Boundary
- Incident Command Post
- Drop Point
- Camp
- Staging Area
- Lookout
- Fire Origin
- Other
- Gate
- Bridge
- Water Development or Draft Site
- Stream Crossing
- Road Repair
- Resource Location
- Repair Point
- Landing or Log Deck
- Fence - Out/Damaged
- Culvert
- Mobile Weather Unit
- Repeater
- Hazard
- Water Source
- Completed Road as Line
- Completed Hand Construction Line
- Completed Road as Line
- Access or Improved Road
- Fence
- Other
- Aerial Hazard
- Retardant Drop
- Temporary Flight Restriction
- Continental Line
- Wildfire Daily Fire Perimeter
- Fire History
- Abandoned/Inactive Mines

Incident Name	IC Point Type	Label	Latitude WGS84	Longitude WGS84	DDM
Haystack	Camp	40	13.310 N	112 13.599 W	
Haystack	Camp	41	12.274 N	112 14.425 W	
Haystack	Camp	42	13.157 N	112 15.025 W	
Haystack	Camp	43	09.506 N	112 06.813 W	
Haystack	Camp	44	10.161 N	112 07.007 W	
Haystack	Camp	45	13.607 N	112 12.795 W	
Haystack	Dip Site	1	14.198 N	112 13.954 W	
Haystack	Dip Site	2	01.148 N	112 18.214 W	
Haystack	Drop Point	1	12.276 N	112 07.436 W	
Haystack	Drop Point	10	06.660 N	112 07.800 W	
Haystack	Drop Point	19	13.314 N	112 13.617 W	
Haystack	Drop Point	20	12.742 N	112 14.863 W	
Haystack	Drop Point	3	10.494 N	112 07.100 W	
Haystack	Drop Point	33	05.537 N	112 12.795 W	
Haystack	Drop Point	35	06.090 N	112 25.030 W	
Haystack	Drop Point	4	13.276 N	112 07.436 W	
Haystack	Drop Point	5	05.569 N	112 22.154 W	
Haystack	Drop Point	50	12.219 N	112 07.599 W	
Haystack	Drop Point	51	12.659 N	112 07.322 W	
Haystack	Drop Point	52	13.813 N	112 07.372 W	
Haystack	Drop Point	54	12.445 N	112 10.739 W	
Haystack	Drop Point	6	08.926 N	112 06.819 W	
Haystack	Drop Point	40	14.425 N	112 08.401 W	
Haystack	Drop Point	71	04.318 N	112 09.148 W	
Haystack	Drop Point	72	06.761 N	112 16.307 W	
Haystack	Drop Point	26	05.583 N	112 18.954 W	
Haystack	Drop Point	28	05.790 N	112 28.832 W	
Haystack	Helispot	1	12.628 N	112 06.206 W	
Haystack	Helispot	11	05.965 N	112 13.895 W	
Haystack	Helispot	115	10.985 N	112 07.420 W	
Haystack	Helispot	117	10.537 N	112 12.657 W	
Haystack	Helispot	122	10.407 N	112 09.701 W	
Haystack	Helispot	H3	04.349 N	112 16.307 W	
Haystack	Helispot	H40	13.318 N	112 13.617 W	
Haystack	Helispot	H45	12.547 N	112 17.376 W	
Haystack	Incident Command Post	ICP	13.390 N	112 07.197 W	
Haystack	Lookout	1	12.465 N	112 12.811 W	
Haystack	Lookout	2	14.662 N	112 09.724 W	
Haystack	Lookout	3	02.633 N	112 16.790 W	
Haystack	Mobile Weather Unit	BRAWS 31	00.500 N	112 12.022 W	
Haystack	Mobile Weather Unit	BRAWS 36	05.734 N	112 19.364 W	
Haystack	Repeater	CHD 7	08.222 N	112 03.536 W	
Haystack	Repeater	CHD 9	20.320 N	112 27.065 W	
Haystack	Road Repair	1	08.045 N	112 08.270 W	
Haystack	Staging Area	1	13.811 N	112 07.399 W	
Haystack	Staging Area	H1	04.962 N	112 06.375 W	
Placer	Helispot	H10	02.418 N	112 11.500 W	
Placer	Helispot	H6	02.639 N	112 10.707 W	
Placer	Helispot	H7	02.450 N	112 12.657 W	
Placer	Helispot	H8	02.594 N	112 16.803 W	
Placer	Helispot	H9	01.157 N	112 17.273 W	
Placer	Lookout	1	05.662 N	112 18.954 W	

S. Tripp
10/22/2021 1247
IR/Inters
North American 1983 Datum, Lat/Long Grid