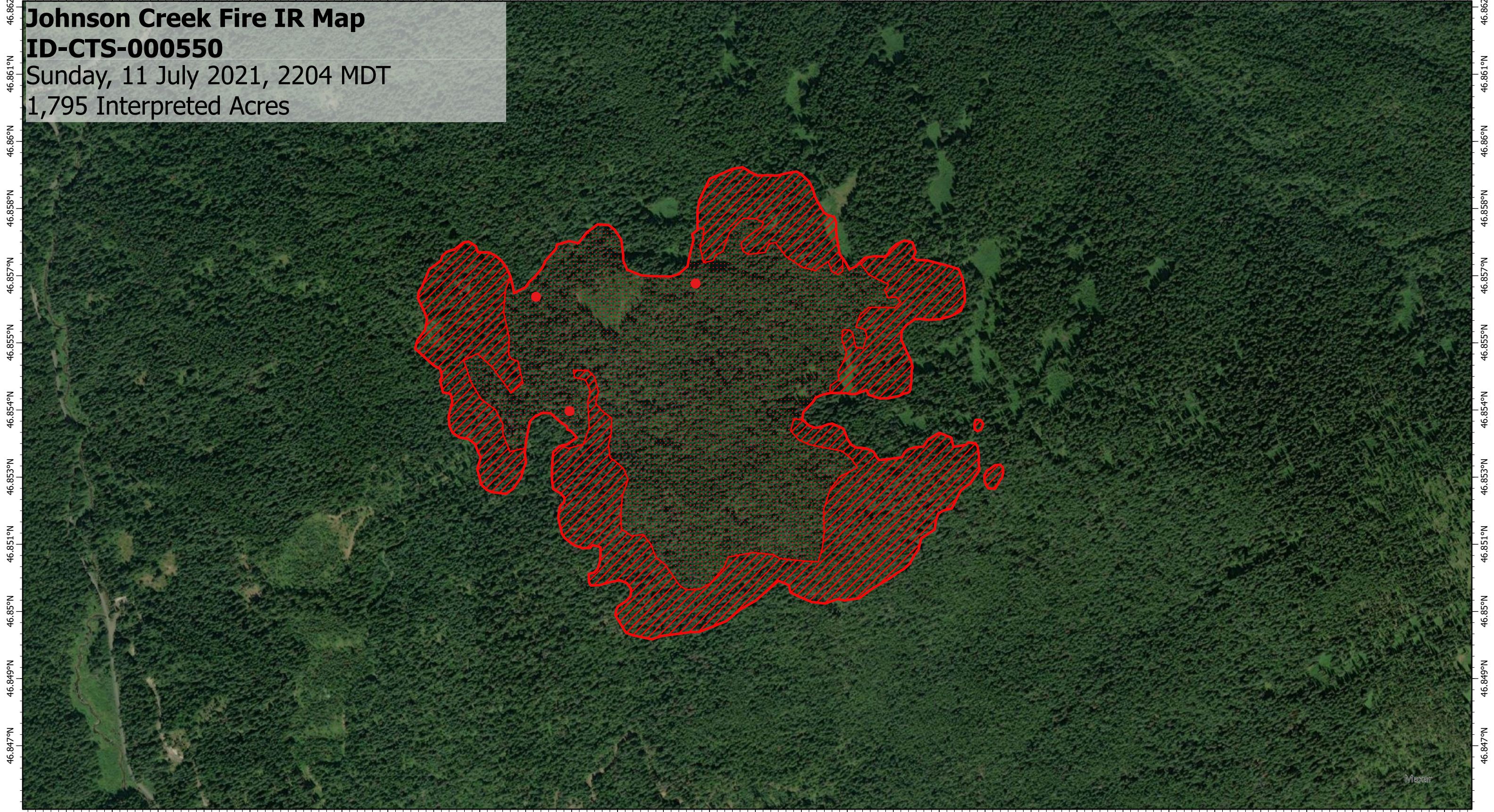


116.186°W 116.185°W 116.183°W 116.182°W 116.181°W 116.179°W 116.178°W 116.176°W 116.175°W 116.174°W 116.172°W 116.171°W 116.169°W 116.168°W 116.167°W 116.165°W 116.164°W 116.163°W 116.161°W 116.16°W 116.158°W 116.157°W 116.156°W 116.154°W 116.153°W 116.151°W 116.15°W 116.149°W 116.147°W 116.146°W 116.144°W

Johnson Creek Fire IR Map
ID-CTS-000550
Sunday, 11 July 2021, 2204 MDT
1,795 Interpreted Acres

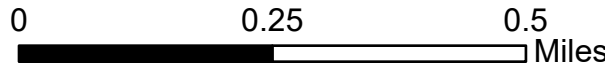


116.186°W 116.185°W 116.183°W 116.182°W 116.181°W 116.179°W 116.178°W 116.176°W 116.175°W 116.174°W 116.172°W 116.171°W 116.169°W 116.168°W 116.167°W 116.165°W 116.164°W 116.163°W 116.161°W 116.16°W 116.158°W 116.157°W 116.156°W 116.154°W 116.153°W 116.151°W 116.15°W 116.149°W 116.147°W 116.146°W 116.144°W

Legend

- Isolated Heat
- Scattered Heat
- Intense Heat
- Burn Perimeter

Scale: 1:12,000
Projection: WGS 1984
Produced by: Owyhee Air Research, LLC
IR Interpreter: E. Trout
Contact: fire@owyheear.com (208) 442-5405



Maxar