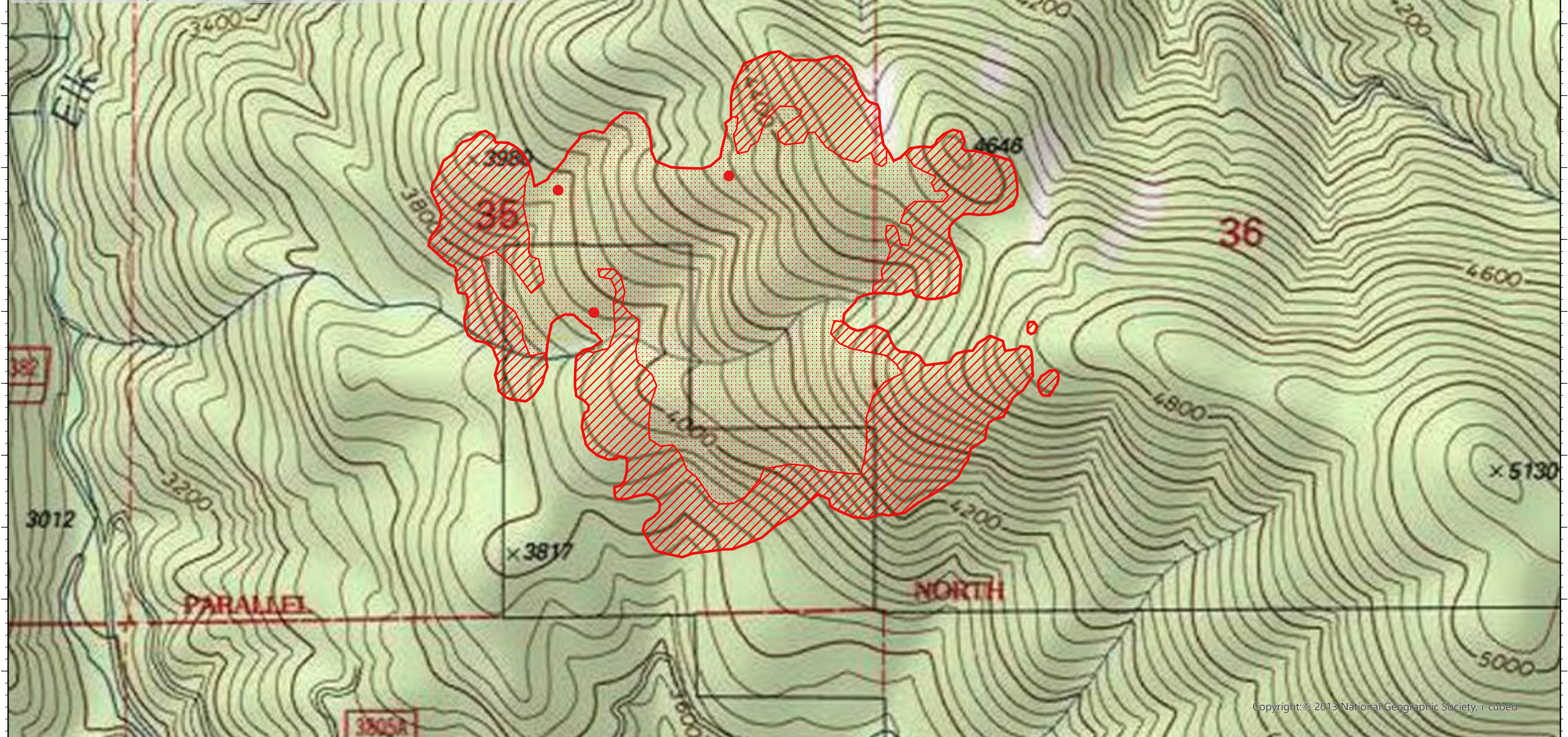


116.186°W 116.185°W 116.183°W 116.182°W 116.181°W 116.179°W 116.178°W 116.176°W 116.175°W 116.174°W 116.172°W 116.171°W 116.169°W 116.168°W 116.167°W 116.165°W 116.164°W 116.163°W 116.161°W 116.16°W 116.158°W 116.157°W 116.156°W 116.154°W 116.153°W 116.151°W 116.15°W 116.149°W 116.147°W 116.146°W 116.144°W

**Johnson Creek Fire IR Map**  
**ID-CTS-000550**  
Sunday, 11 July 2021, 2204 MDT  
1,795 Interpreted Acres



Copyright: © 2013 National Geographic Society, i-cubed

116.186°W 116.185°W 116.183°W 116.182°W 116.181°W 116.179°W 116.178°W 116.176°W 116.175°W 116.174°W 116.172°W 116.171°W 116.169°W 116.168°W 116.167°W 116.165°W 116.164°W 116.163°W 116.161°W 116.16°W 116.158°W 116.157°W 116.156°W 116.154°W 116.153°W 116.151°W 116.15°W 116.149°W 116.147°W 116.146°W 116.144°W

**Legend**

- Isolated Heat
- Scattered Heat
- Intense Heat
- Burn Perimeter

Scale: 1:12,000  
 Projection: WGS 1984  
 Produced by: Owyhee Air Research, LLC  
 IR Interpreter: E. Trout  
 Contact: fire@owyheear.com (208) 442-5405

