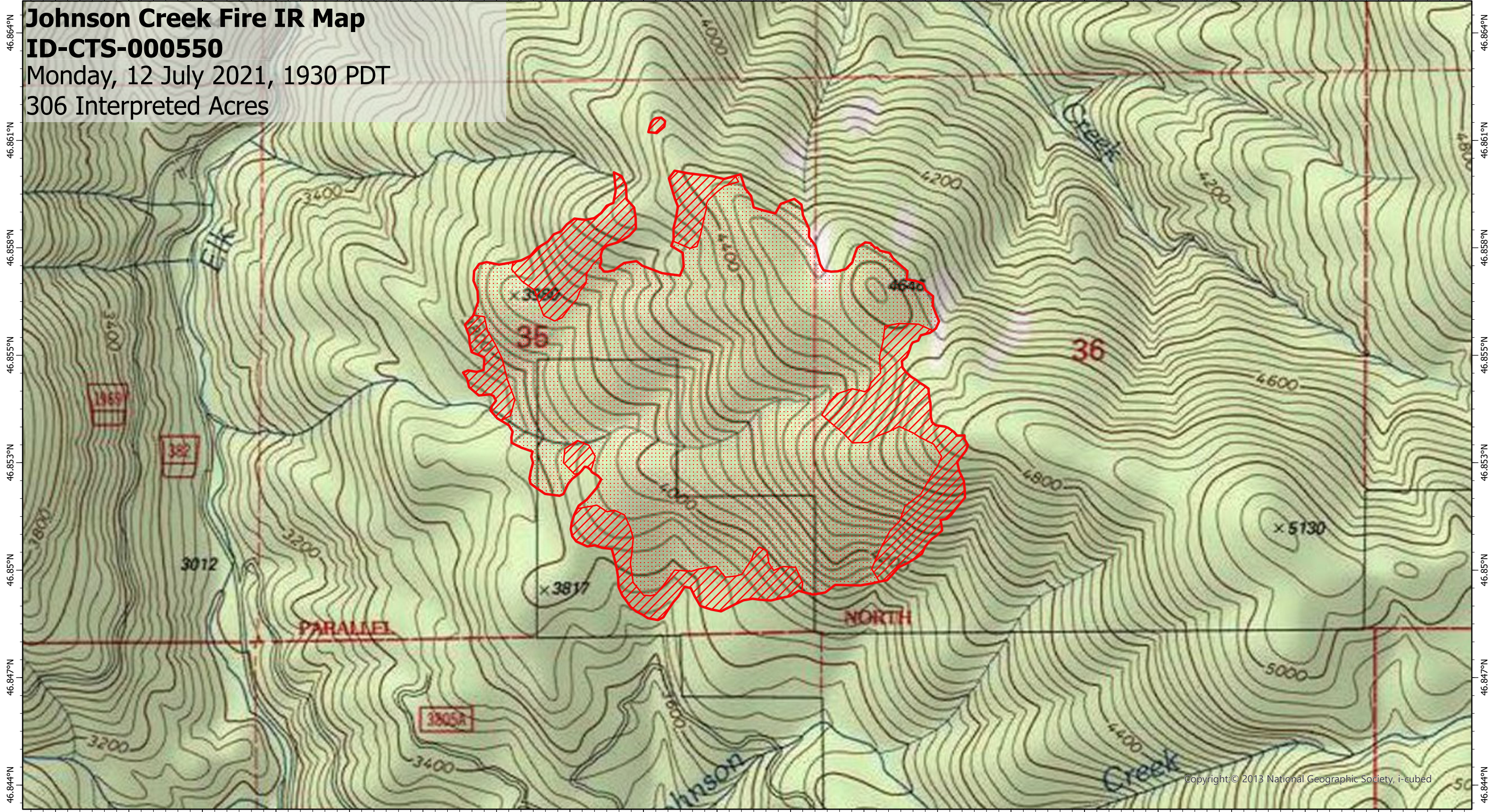





116.192°W 116.189°W 116.186°W 116.183°W 116.181°W 116.178°W 116.175°W 116.172°W 116.169°W 116.167°W 116.164°W 116.161°W 116.158°W 116.156°W 116.153°W 116.15°W 116.147°W 116.144°W 116.142°W 116.139°W

Johnson Creek Fire IR Map
ID-CTS-000550
Monday, 12 July 2021, 1930 PDT
306 Interpreted Acres



Copyright © 2013 National Geographic Society, i-cubed

Legend

-  Scattered Heat
-  Intense Heat
-  Burn Perimeter

Scale: 1:15,000
Projection: WGS 1984
Produced by: Owyhee Air Research, LLC
IR Interpreter: S. Osberg
Contact: fire@owyheeair.com (208) 442-5405

