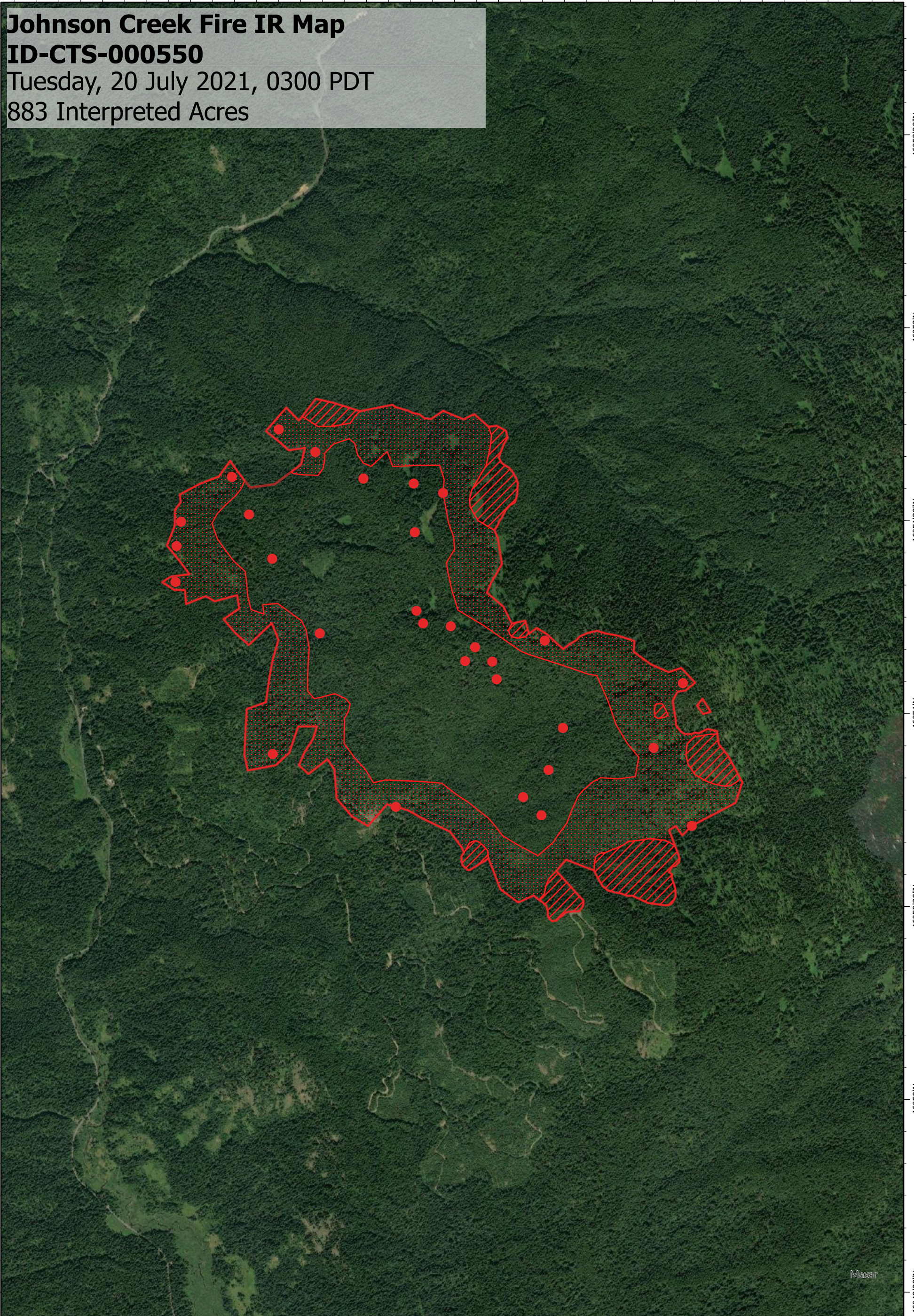


116°11'W 116°10'30"W 116°10'W 116°9'30"W 116°9'W 116°8'30"W 116°8'W

**Johnson Creek Fire IR Map**  
**ID-CTS-000550**  
Tuesday, 20 July 2021, 0300 PDT  
883 Interpreted Acres

46°52'30"N  
46°52'  
46°51'30"N  
46°51'  
46°50'30"N  
46°50'  
46°49'30"N

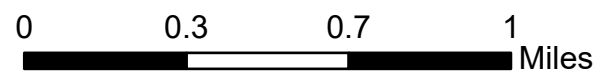
46°52'30"N  
46°52'  
46°51'30"N  
46°51'  
46°50'30"N  
46°50'  
46°49'30"N



**Legend**

- IR Isolated Heat
- Burn Perimeter
- IR Intense Heat
- IR Scattered Heat

Scale: 1:25,000  
 Projection: WGS 1984  
 Produced by: Owyhee Air Research, LLC  
 IR Interpreter: C. Merriman  
 Contact: fire@owyheear.com (208) 442-5405



116°11'W 116°10'30"W 116°10'W 116°9'30"W 116°9'W 116°8'30"W 116°8'W