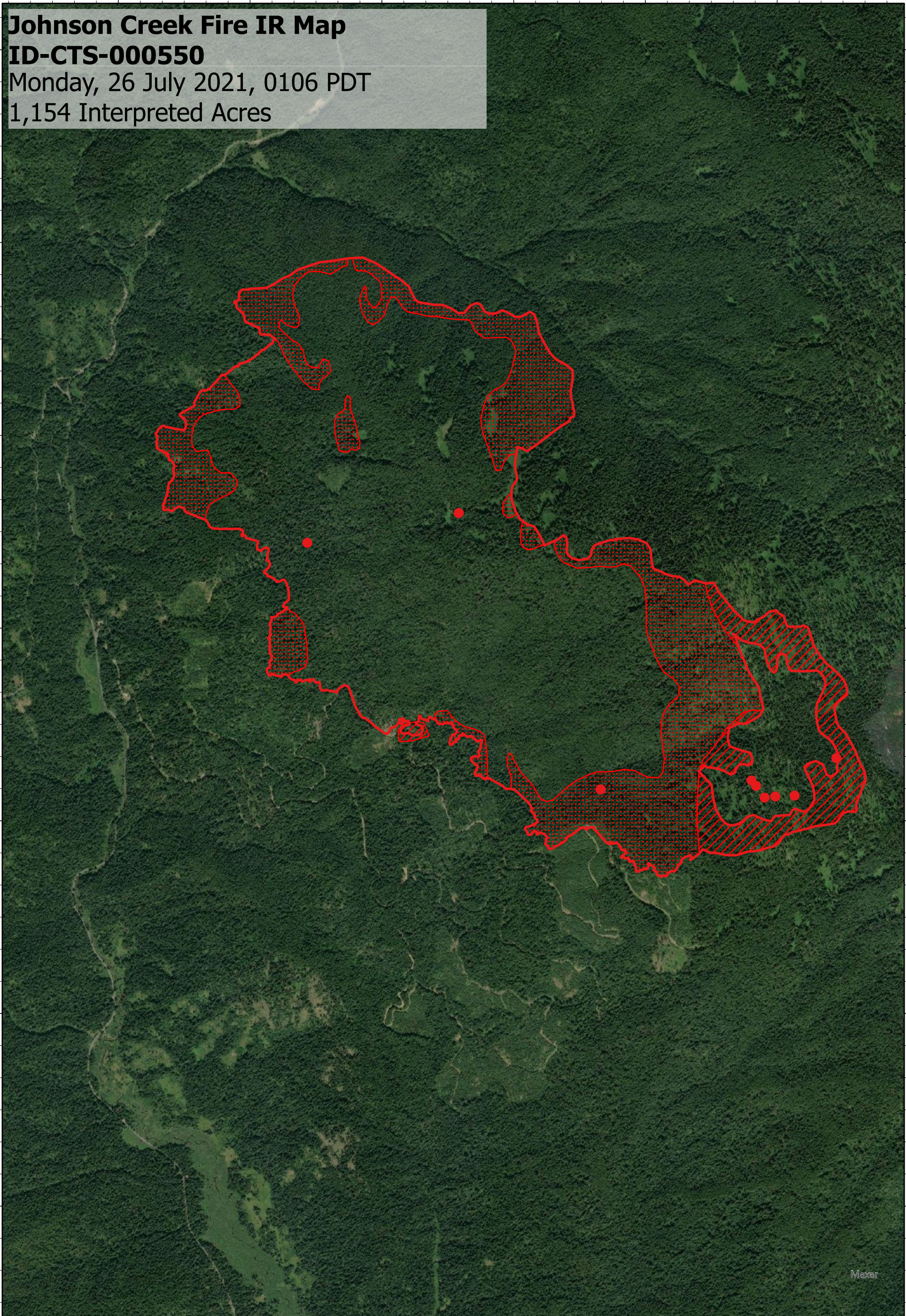


116°11'W 116°10'30"W 116°10'W 116°9'30"W 116°9'W 116°8'30"W

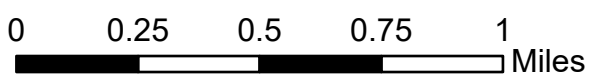
Johnson Creek Fire IR Map
ID-CTS-000550
Monday, 26 July 2021, 0106 PDT
1,154 Interpreted Acres



Legend

- IR Isolated Heat
- IR Burn Perimeter
- IR Intense Heat
- IR Scattered Heat

Scale: 1:25,000
 Projection: WGS 1984
 Produced by: Owyhee Air Research, LLC
 IR Interpreter: C. Merriman
 Contact: fire@owyheear.com (208) 442-5405



116°11'W 116°10'30"W 116°10'W 116°9'30"W 116°9'W 116°8'30"W

46°52'30"N
46°52'N
46°51'30"N
46°51'N
46°50'30"N
46°50'N
46°49'30"N

46°52'30"N
46°52'N
46°51'30"N
46°51'N
46°50'30"N
46°50'N
46°49'30"N

Maxar