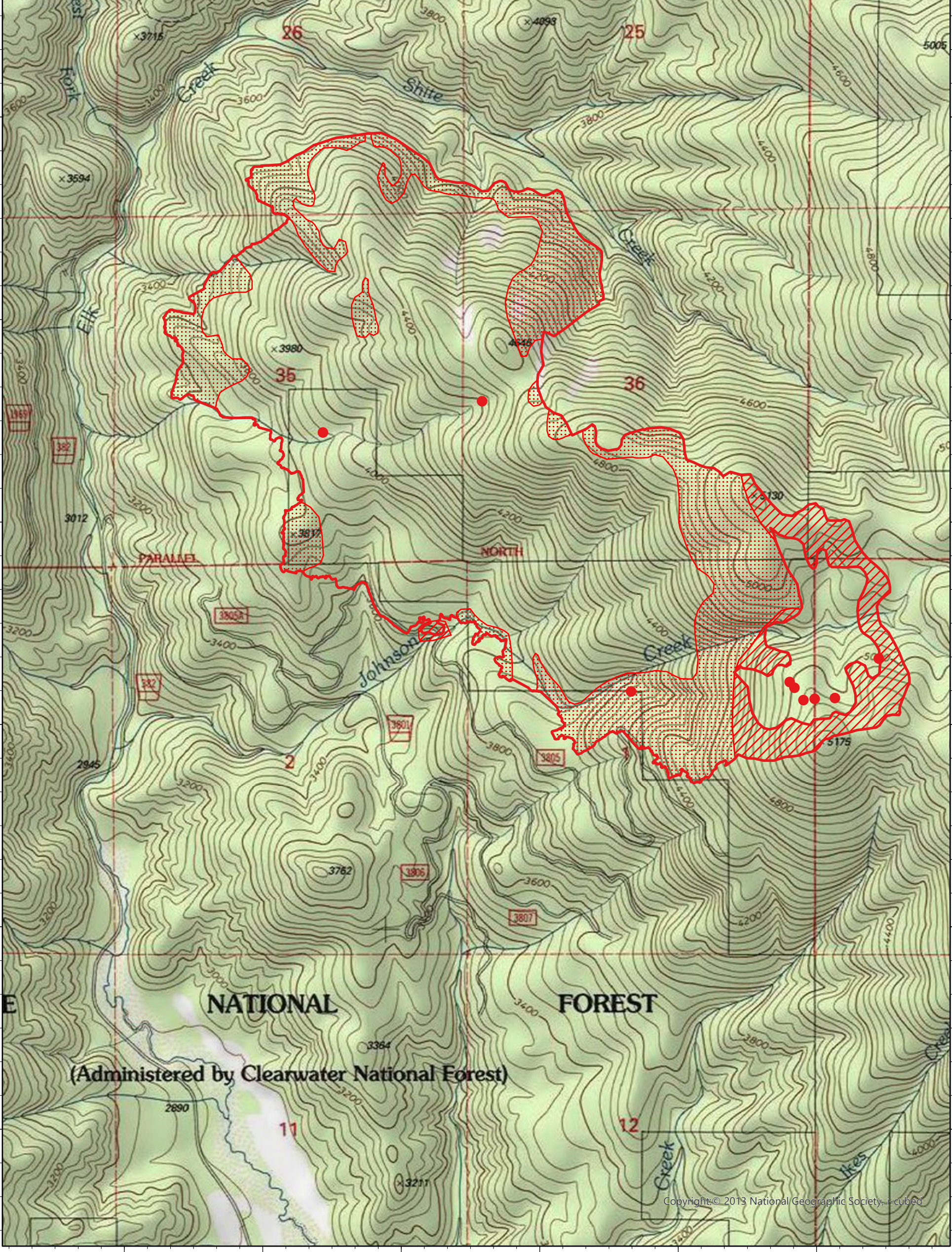


116°11'W 116°10'30"W 116°10'W 116°9'30"W 116°9'W 116°8'30"W

Johnson Creek Fire IR Map

ID-CTS-000550

Monday, 26 July 2021, 0106 PDT
1,154 Interpreted Acres



Legend

- IR Isolated Heat
- ▭ IR Burn Perimeter
- ▨ IR Intense Heat
- ▤ IR Scattered Heat

Scale: 1:25,000
Projection: WGS 1984
Produced by: Owyhee Air Research, LLC
IR Interpreter: C. Merriman
Contact: fire@owyheear.com (208) 442-5405

