

116°11'W 116°10'30"W 116°10'W 116°9'30"W 116°9'W 116°8'30"W

46°52'30"N
46°52'N
46°51'30"N
46°51'N
46°50'30"N
46°50'N
46°49'30"N

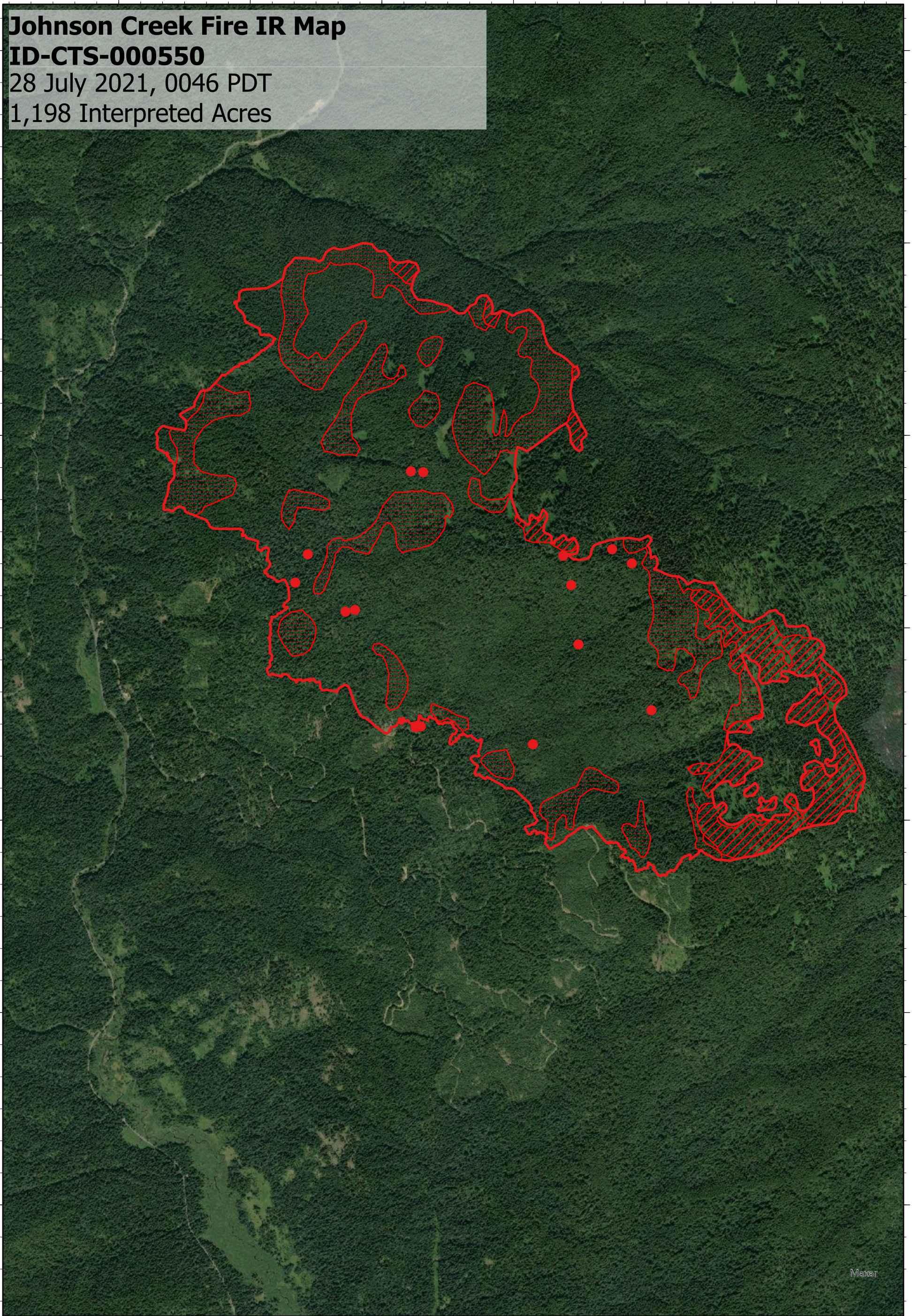
46°52'30"N
46°52'N
46°51'30"N
46°51'N
46°50'30"N
46°50'N
46°49'30"N

Johnson Creek Fire IR Map

ID-CTS-000550

28 July 2021, 0046 PDT

1,198 Interpreted Acres



Legend

- Isolated Heat
- Burn Perimeter
- Intense Heat
- Scattered Heat

Scale: 1:25,000
 Projection: WGS 1984
 Produced by: Owyhee Air Research, LLC
 IR Interpreter: S. Osberg
 Contact: fire@owyheear.com (208) 442-5405



Maxar